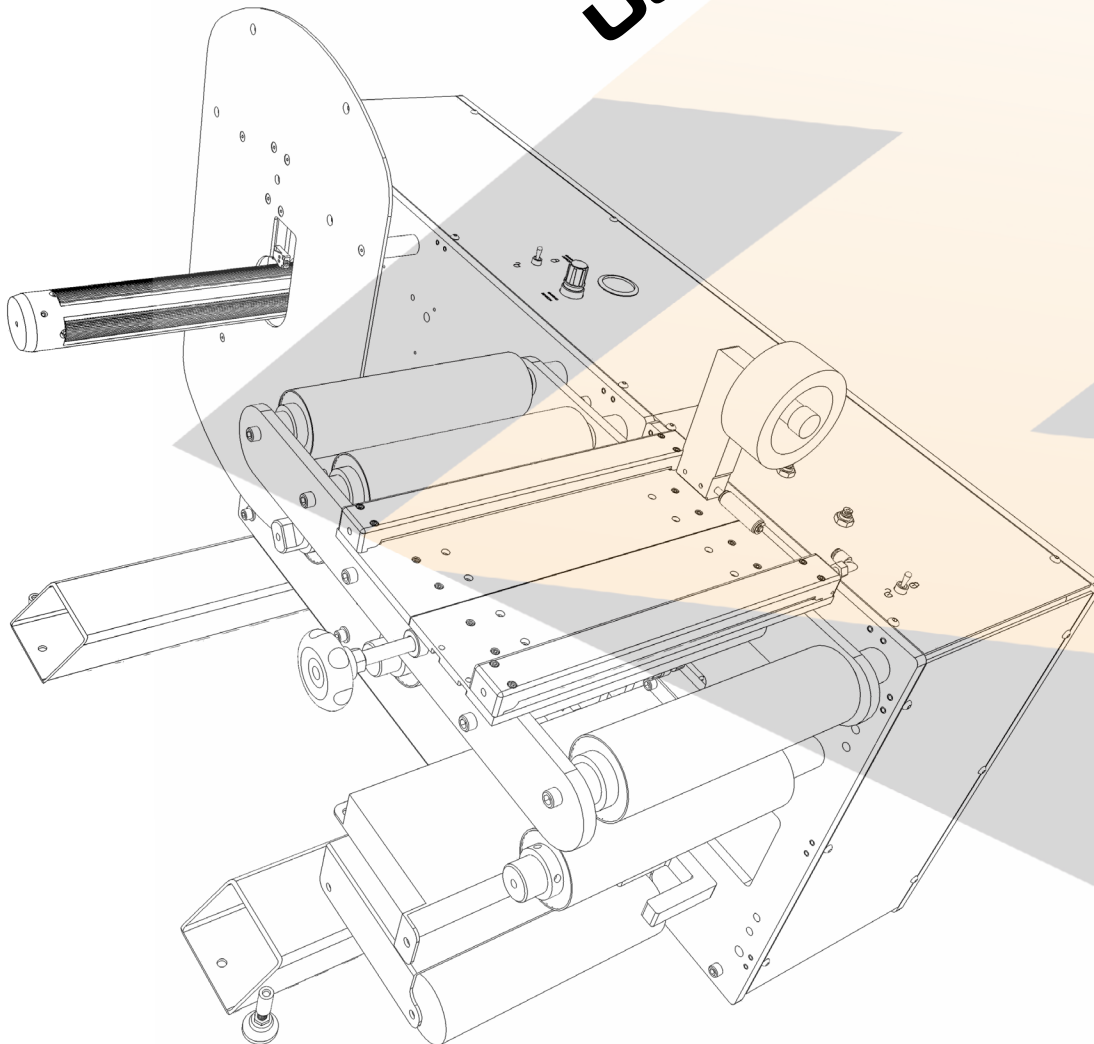




AZTECH CONVERTING SYSTEMS
212 W Lodge Drive
TEMPE, AZ 85283
PHONE (480) 951-8351
FAX (480) 998-5409
www.aztechconverting.com

UNWIND DISC BRAKE User Manual





AZTECH CONVERTING SYSTEMS

**UDB
USER MANUAL**

TABLE OF CONTENTS

SECTION 1: GENERAL INFORMATION	1-2
SECTION 2: MACHINE SETUP	3
SECTION 3: MACHINE OPERATION	4-5
SECTION 4: MAINTENANCE AND REPAIRS	6
SECTION 5: CART DETAIL	7-29
SECTION 6: WARRANTIES AND SERVICE	30



Section 1: General Information

Section 1: General Information

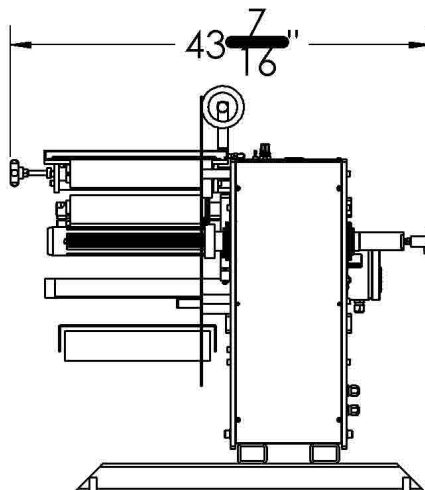
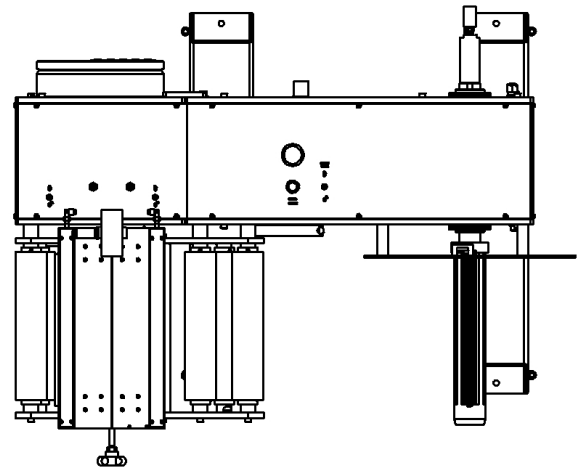
1-1 Introduction

The AZTECH Unwind Disc Brake series of large diameter unwind stands is available in 10 inch (24.5 cm), 13 inch (33.02 cm), 16 inch (40.64 cm), 18 inch (45.72 cm) and 20" (50.8 cm) widths and is available in either web direction. The UDB is designed to be highly productive, versatile and simple to operate and maintain due to its simplistic dancer controlled braking system.

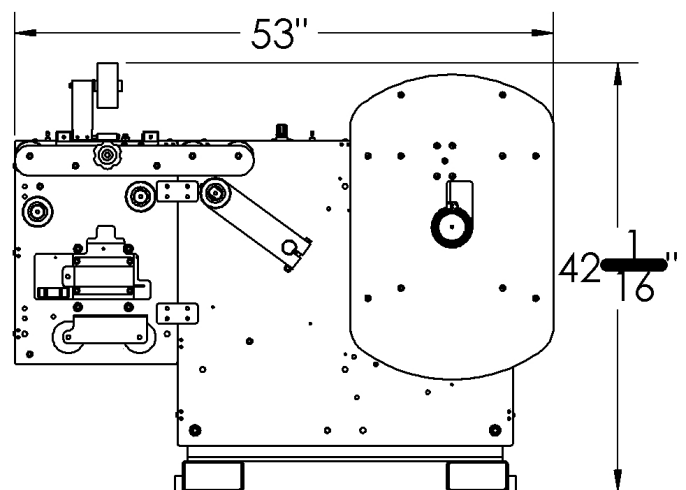
Before operating your new UDB, fully read and understand all facets of this manual. Following the procedures outlined in this manual will help assure maximum performance. Keeping your machine properly set-up and maintained will assure years of productive and satisfactory service.

1-2 Machine Information and Specifications

Max Roll Dia:	40" (101.6 cm)
Electrical Req.:	2 A 120/220 VAC <i>w/ Web Guide Only</i>
Air Req.:	90PSI
Rewind Capacity:	40in



13" Shown



1:
Gen.
Info

2:
Install

3:
Setup

4:
Oper.

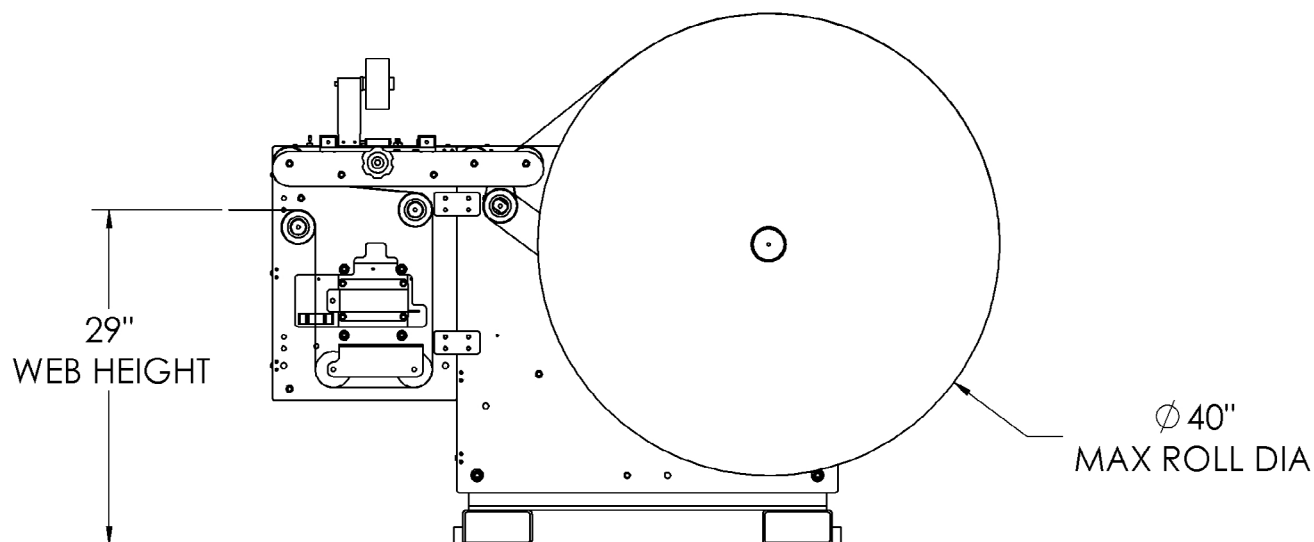
5:
DWGs

6:
Warr.



AZTECH CONVERTING SYSTEMS

UDB USER MANUAL



OPTIONAL EXIT IDLER ASSEMBLY FOR ADJUSTABLE WEB EXIT HEIGHTS

1-3: Care and Maintenance

The UDB requires little maintenance and only periodic inspections of the brake pads is necessary. The Tru-Turn Unwind spindle is a bladder-less design and cannot leak air.

1-4: Safety

The UDB is designed to operate at high rates of speed, employing rollers and other moving parts. Operators must keep their hands clear of the machine when it is in operation. Making all operators aware of potential safety hazards will help minimize any chances of operator injury. **Never operate with the top cover off.**



Section 2: Machine Installation

2-1: Preparation

It is important that your UDB be situated on solid and level ground. Make sure that the site allows for access to the machine from all 4 sides. If the machine is placed on unstable or un-level ground, it may tip over risking damage or serious personal injury.

2-2: Uncrating Machine

To avoid damage to your new UDB, carefully remove the cover by removing all screws, then remove the side panels to expose machine. Remove all 4 lag bolts which hold the machine to the base. Remove all boxes and parts inside the crate.

2-3: Removal and Positioning

It is critical that the UDB is removed and handled being supported under the base of the machine and should never be lifted using the rollers for support.

2-4: Pneumatic Connections

Although your UDB has been thoroughly tested before shipment, connections on occasion may loosen during shipment. Visually inspect all pneumatic connections to assure that each is fitted securely. Connect air line to the machine's main air connection at back of machine, and listen for any air leaks that may exist. Check to make sure that the air switch on top of the machine works properly by switching it back and forth to assure proper operation.

1:
Gen.
Info

2:
Install

3:
Setup

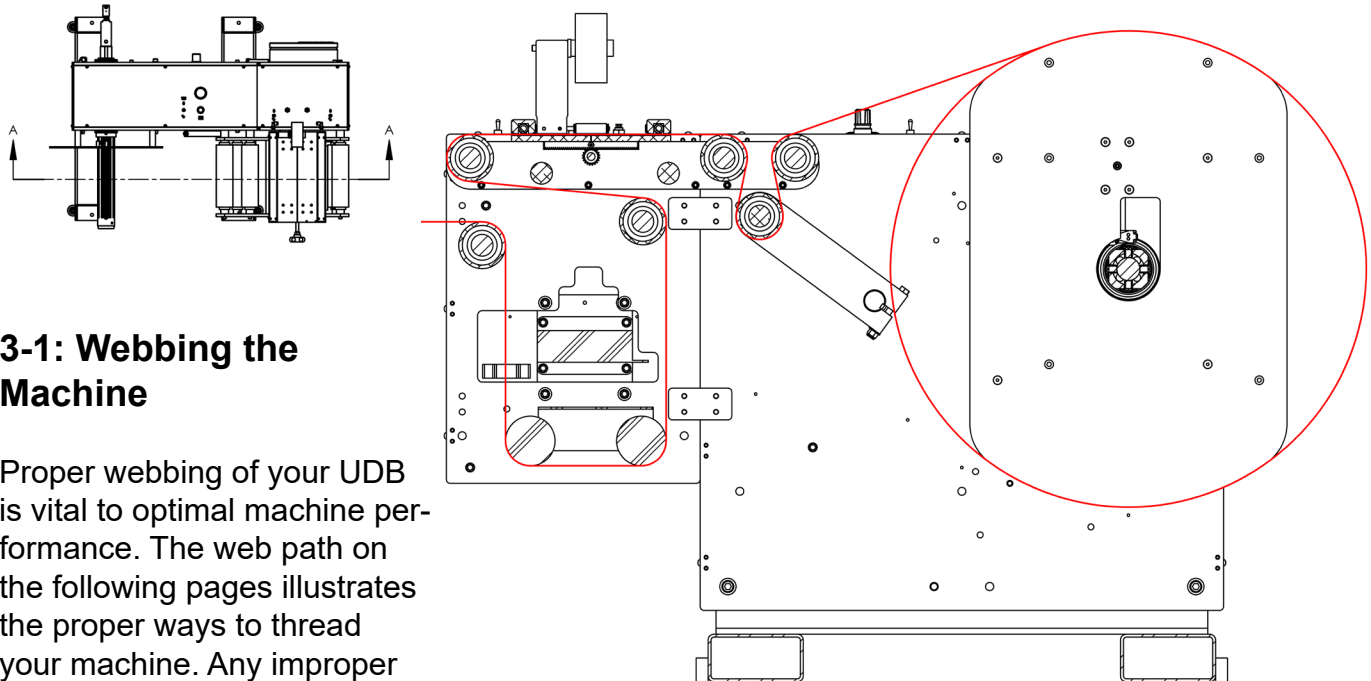
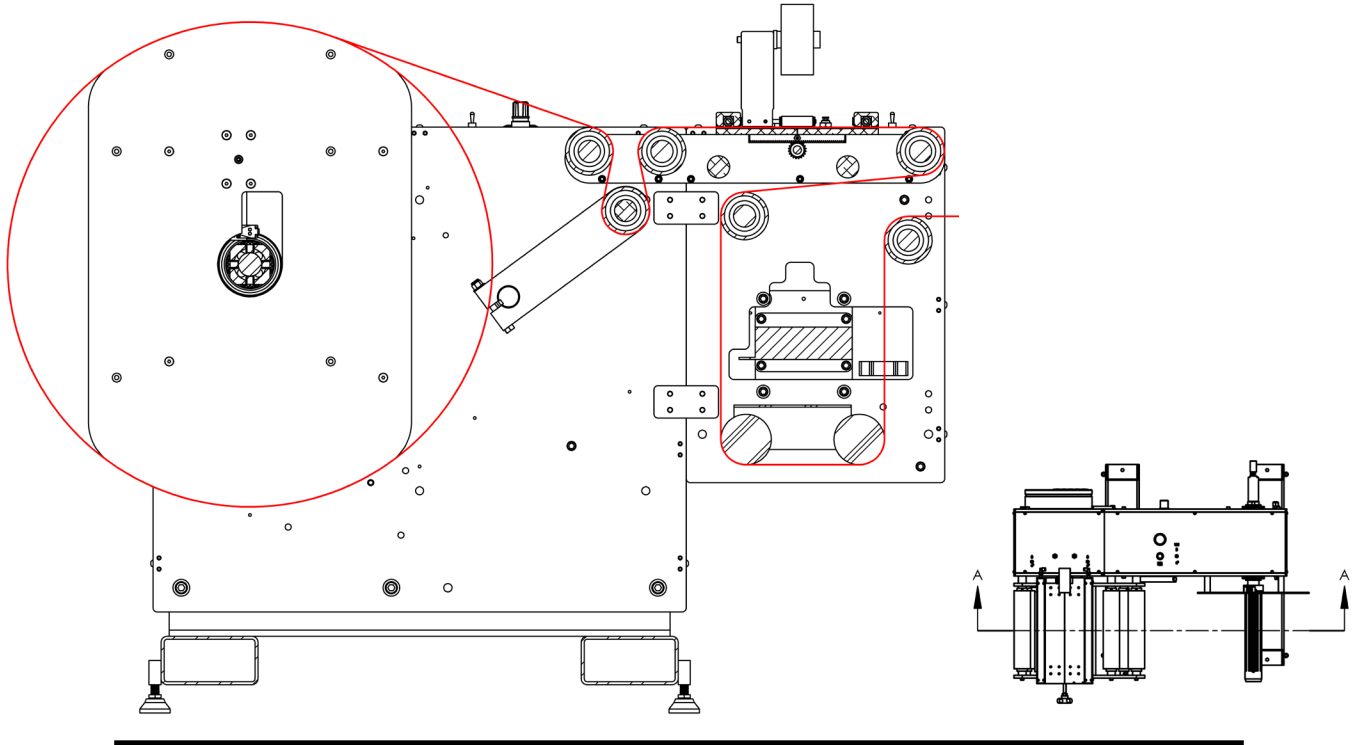
4:
Oper.

5:
DWGs

6:
Warr.



Section 3: Machine Setup



3-1: Webbing the Machine

Proper webbing of your UDB is vital to optimal machine performance. The web path on the following pages illustrates the proper ways to thread your machine. Any improper webbing of the machine may cause tension problems that will impede operation.

Show with optional Web Guide Assembly

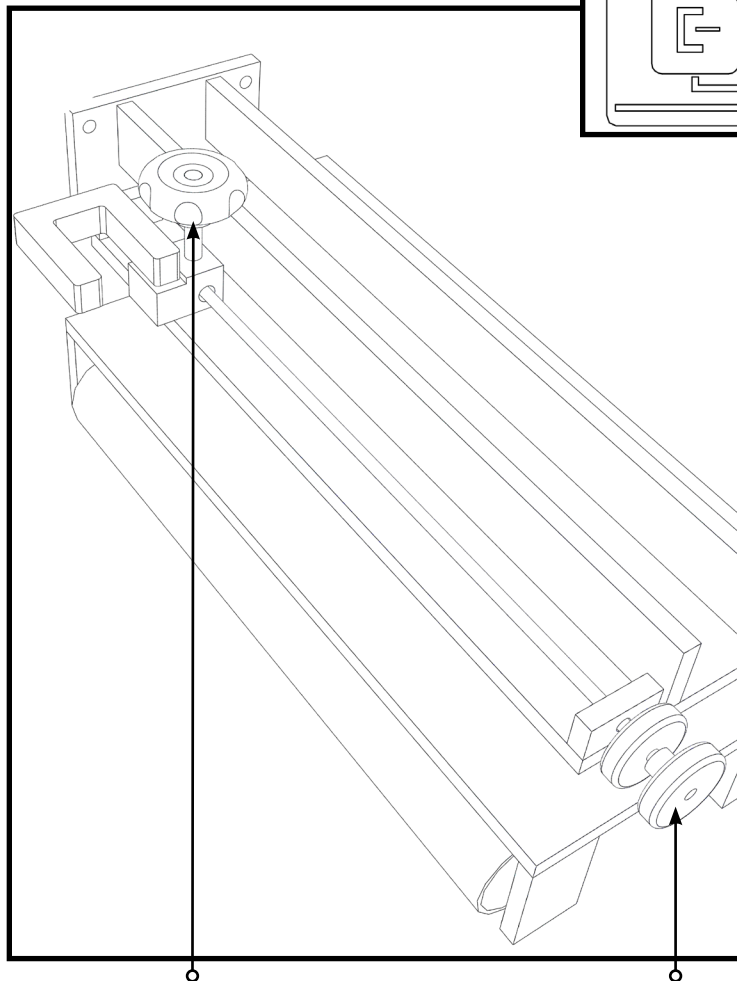


3-1 Webbing the Machine, Cont.

1. Turn unwind spindle switch to “DEFLATE” position.
2. Slide roll material onto spindle, web machine per web path drawing, and turn unwind spindle switch to “INFLATE” position.
3. Adjust brake tension by turning pneumatic regulator clockwise for higher tension and counter-clockwise for lower tension.

3-2 Web Guide Setup

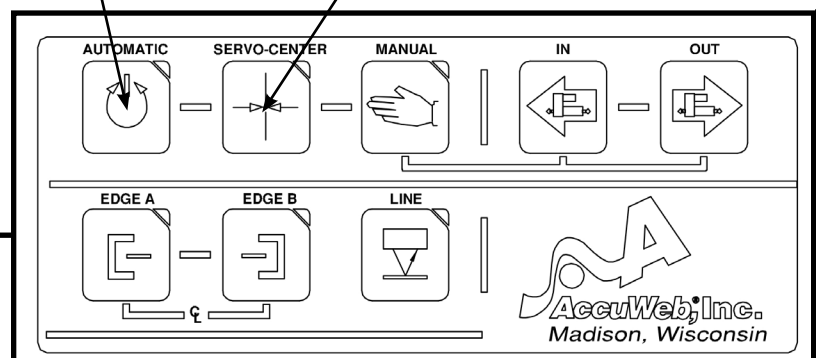
The web guide is located in the center of the machine between the unwind and rewind stations. After webbing the machine, set the web by doing the following:



COARSE
SENSOR
POSITIONING

AUTOMATIC

SERVO CENTER



Setting the Web Guide:

1. Press the “SERVO-CENTER” button on the front of the web guide.
2. Align the sensor with the inside edge of the web. For fine alignment adjustment, turn knob on outside of web guide.
3. Jog the machine briefly to assure that the web is moving smoothly.
4. Press the “AUTOMATIC” button which will engage the sensor and allow the web guide to adjust itself to the movement of the web.
5. For more specific instructions about the features of the web guide, refer to the Accu-Web manual included with this manual.

FINE
SENSOR
POSITIONING

1:
Gen.
Info

2:
Install

3:
Setup

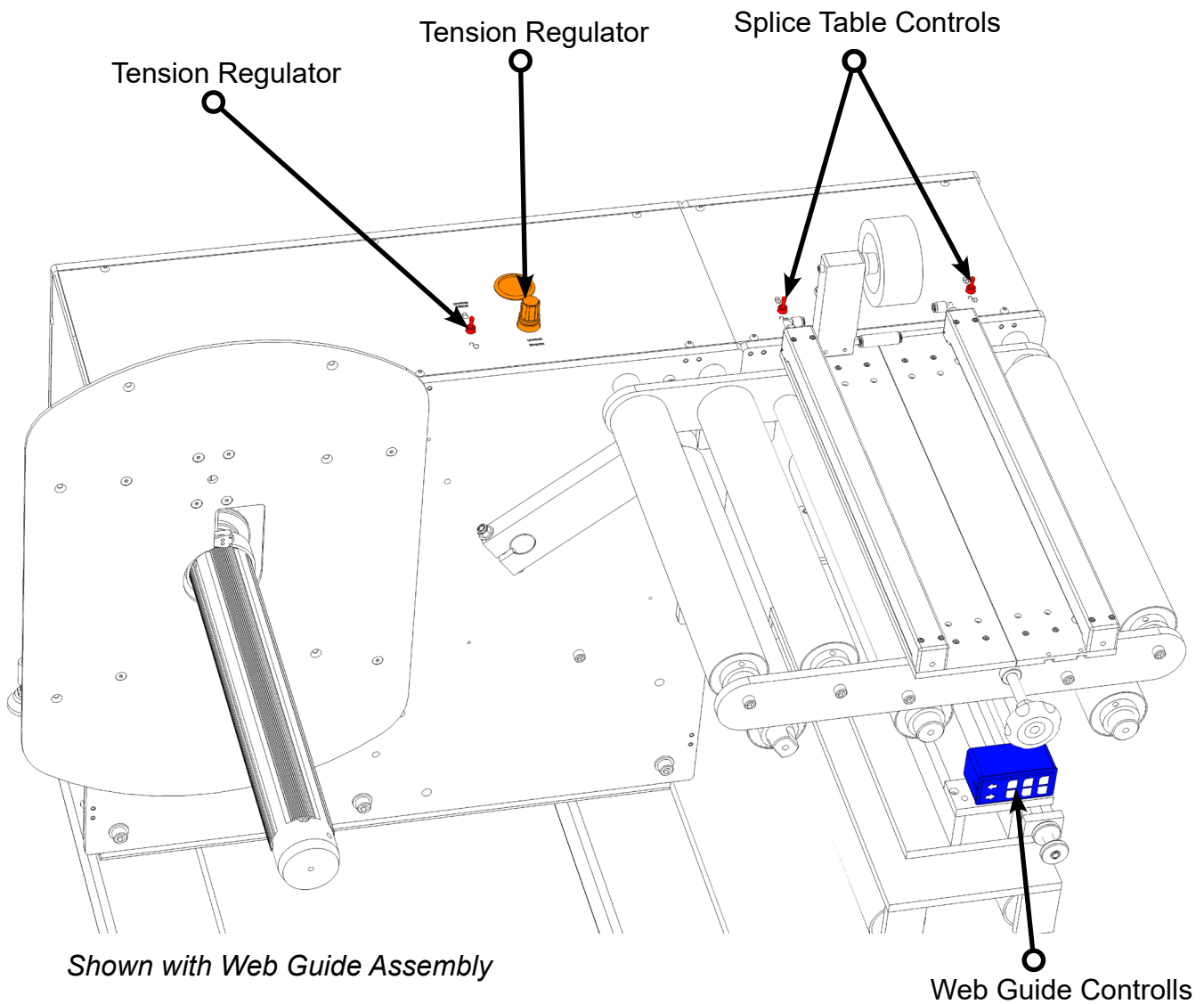
4:
Oper.

5:
DWGs

6:
Warr.



Section 4: Operator Controls



Typical tension settings are 10-40 lbs.

Refer to Web Guide Manual for more information about Web Guide Controls. (If equipped.)



1:
Gen.
Info

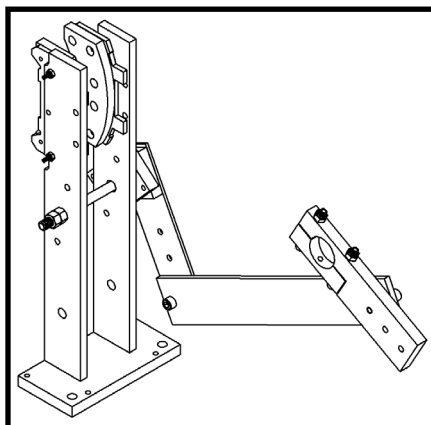
2:
Install

3:
Setup

4:
Oper

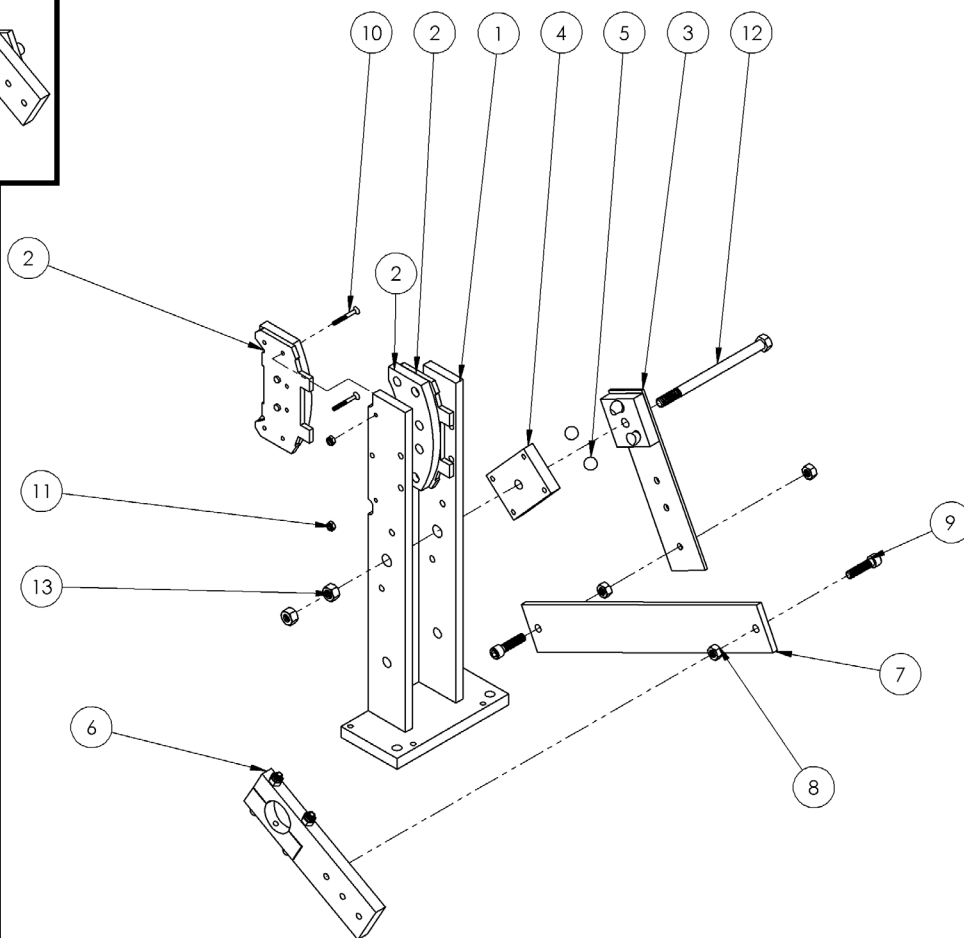
5:
DWGs

6:
Warr.



Section 5: Machine Drawings

UDB Brake Assembly, (AZT: 15928)



ITEM NO.	PART NUMBER	DESCRIPTION	UNLOCKED UDB/QTY.
1	12043	BRAKE ASSEMBLY PLATE MOUNT	1
2	brake pad MOVABLE	DISC BRAKE PAD	2
3	11823	BRAKE PIVOT ARM ASSEMBLY,BSR,SR,DM	1
4	11818	BRAKE RAMP PLATE, FIXED,BSR, SR, RM	1
5	1_2 BALL	MCMMASTER-CARR# 96455K56	2
6	11813	CAM BRAKE MASTER ARM PIVOT	1
7	15929	UDB2, BRAKE TRANSFER LINK	1
8	HEX NUT_~3125-18 UNC_ SIMP	HEX NUT 5-16-18	3
9	SCH_~3125-18 UNC_1~25_ SIMP	SOCKET HEAD CAP SCREW 5/16-18 X 1-1/4"	2
10	FLH-SCH-82_~138- 32 UNC_1~25_ SIMP	FLAT HEAD CAP SCREW 6-32 X 1-1/4"	4
11	HEX NUT 6-32 LOCK	HEX NUT 6-32 NYLOCK	4
12	HEX BOLT_~375-16 UNC_5~5_ SIMP	HEX BOLT GRADE 5, 3/8-16 X 5.5"	1
13	HEX NUT_~375-16 UNC_0_ SIMP	HEX NUT 3/8-16	2

1:
Gen.
Info2:
Install3:
Setup4:
Oper.5:
DWGs6:
Warr.

AZTECH CONVERTING SYSTEMS

UDB USER MANUAL

ITEM NO.	PART NUMBER	DESCRIPTION	DRAWING VIEW UNWIND ONLY/ QTY.
1	15999	UDB2 BASE WELDMENT 40 SERIES	1
2	17430	UDB2 REAR MAIN PLATE	1
3	17429	UDB2 FRONT MAIN PLATE	1
4	11418	BRAKE ROTOR ASSEMBLY	1
5	15928	UDB2, BRAKE ASSEMBLY	1
6	10515-C	DANCER ASSEMBLY, ROLL MASTER	1
7	NCMC150-0400	AIR CYLINDER	1
8	15889	INSPECTION REWINDER, DANCER PIVOT ARM	1
9	1-38 flanged oilite	KAMFF1618	2
10	10523	STANDOFF, FRAME, TOP, BASE UNIT	2
11	15885	REWIND DIE CUTTER BRAKE REGULATOR PIVOT SPRT	1
12	15386	BSR BRAKE REGULATOR ASSEMBLY AR25	1
13	15389	AR25-N02H-Z PRESSURE ROD	1
14	NY-125	ROD CLEVIS 3/8" CROSS HOLE 7/16-20 END THREAD	1
15	15884	REWIND DIE CUTTER DANCER PIVOT AIR LOCK ARM	1
16	2.0000er32	ER-32 BEARING	2
17	15718	REWIND DIE CUTTER UNWIND BACK PLATTER ASSEMBLY	1
18	KQ2F07-35	1/4 ONE TOUCH TO 1/4 FEMALE PIPE THREAD	1
19	22076	AIR REGULATOR WITH GUAGE AND FITTINGS	1
20	22076	AIR REGULATOR WITH GUAGE AND FITTINGS	1
21	22076	AIR REGULATOR WITH GUAGE AND FITTINGS	1
22	AR20K-N01-Z	REGULATOR, MODULAR, AR MASS PRO	1
23	SMC KQ2L07-34S	1/4 COMP TO 1/8 MPT	2
24	T8D-U	AIR GUAGE	1
25	MJTV-3 ASSEMBLY	3 WAY 1/8 PORT TOGGLE VALVE	1
26	17432	UDB2 SIDE COVER 2011	2
27	17431	UDB2 TOP COVER 2011	1
28	KQ2U07-00	NAME	3
29	BULK HEAD FITTING 1-4 TO 1-4 ONE TOUCH ASSEMBLY	1/4 TO 1/4 ONE TOUCH BLK HD FITTING	2
30	6 X 6 X 4 SC BOX		1
31	1_4 CORD CLAMP WITH BOLT	1/4 cord clamp with 8-32 x 1/2 button head cap screw	5
32	1_2 CORD CLAMP WITH BTHHD 8-32 X 1_2	1/2" CORD CLAMP WITH 8-32 X 1/2" BTNHD CAP SCREW	3
33	1_2 STRAIN RELIEF ASSEMBLY	1/2" NON METALLIC LIQUID-TIGHT TYPW B CONNECTOR	2
34	1-3EIGHTS COLLAR	1-3/8 SET COLLARS	3
35	16016	UDB BRAKE SPRT BOTTOM PLATE	1
36	16017	UDB BRAKE SPRT BRACKET FOR BOTTOM PLATE	2
37	11568	1-3/8 SET COLLARS	1
38	15894	MOUNT BLOCK 1/2 X 1/2 X 1 1/4-20 THREAD, TWO .257 HOLES THRU	14
39	91034A110	11/16 HEX DIA X 1" LONG, 3/8-16 THREADED THRU	1
40	SCH_~375-16 UNC_1_SIMP	SOCKET HEAD CAP SCREW 3/8-16 X 1"	10
41	HEX NUT_~375-16 UNC_0_SIMP	HEX NUT 3/8-16	1
42	SCH_~375-16 UNC_1~75_SIMP	SOCKET HEAD CAP SCREW 3/8-16 X 1-3/4"	1
43	BTNHD_~375-16 UNC_1~5_SIMP	BUTTON HEAD CAP SCREW 3/8-16 X 1-1/2"	1
44	BTNHD_~164-32 UNC_1_SIMP	BUTTON HEAD CAP SCREW GRADE 5, 8-32 X 1"	3
45	WSHR A_~375 HARD	3/8" HARD WASHER	1
46	SCH_~375-16 UNC_0~5_SIMP	SOCKET HEAD CAP SCREW 3/8-16 X 1/2"	1
47	SCH_~250-20 UNC_1_SIMP	SOCKET HEAD CAP SCREW 1/4-20 X 1"	28
48	BTNHD_~250-20 UNC_0~5_SIMP	BUTTON HEAD CAP SCREW 1/4-20 X 1/2"	18
49	SCH_~190-32 UNF_1_SIMP	SOCKET HEAD CAP SCREW 10-32 X 1"	1
50	SCH_~375-16 UNC_1~5_SIMP	SOCKET HEAD CAP SCREW 3/8-16 X 1-1/2"	4
51	WSHR A_~500 HARD	HARD FLAT WASHER 1/2"	4
52	SCH_~500-13 UNC_1~5_SIMP	SOCKET HEAD CAP SCREW 1/2-13 X 1-1/2"	4
53	HEX BOLT_~250-20 UNC_3~5_SIMP	HEX BOLT 1/4-20 X 3-1/2"	1
54	HEX NUT_~250-20 UNC_0_LOCK	HEX NUT NYLOCK 1/4-20	1
55	SSCR-HEX-CUP_~250-20 UNC_0.25_SIMP	SSCR 1/4-20 X 1/4	1
56	SCH_~375-16 UNC_1~25_SIMP	SOCKET HEAD CAP SCREW 3/8-16 X 1-1/4"	1
57	19121	6 X 6 SC BOX SPRT PLATE	1
58	SCH_~250-20 UNC_0~75_SIMP	SOCKET HEAD CAP SCREW 1/4-20 X 3/4"	2
59	WSHR A_~3125 HARD	5/16" GROUND HARD WASHER	3
60	HEX BOLT_~3125-18 UNC_1_SIMP	HEX HEAD BOLT 5/16-18 X 1"	3



1:
Gen.
Info

2:
Install

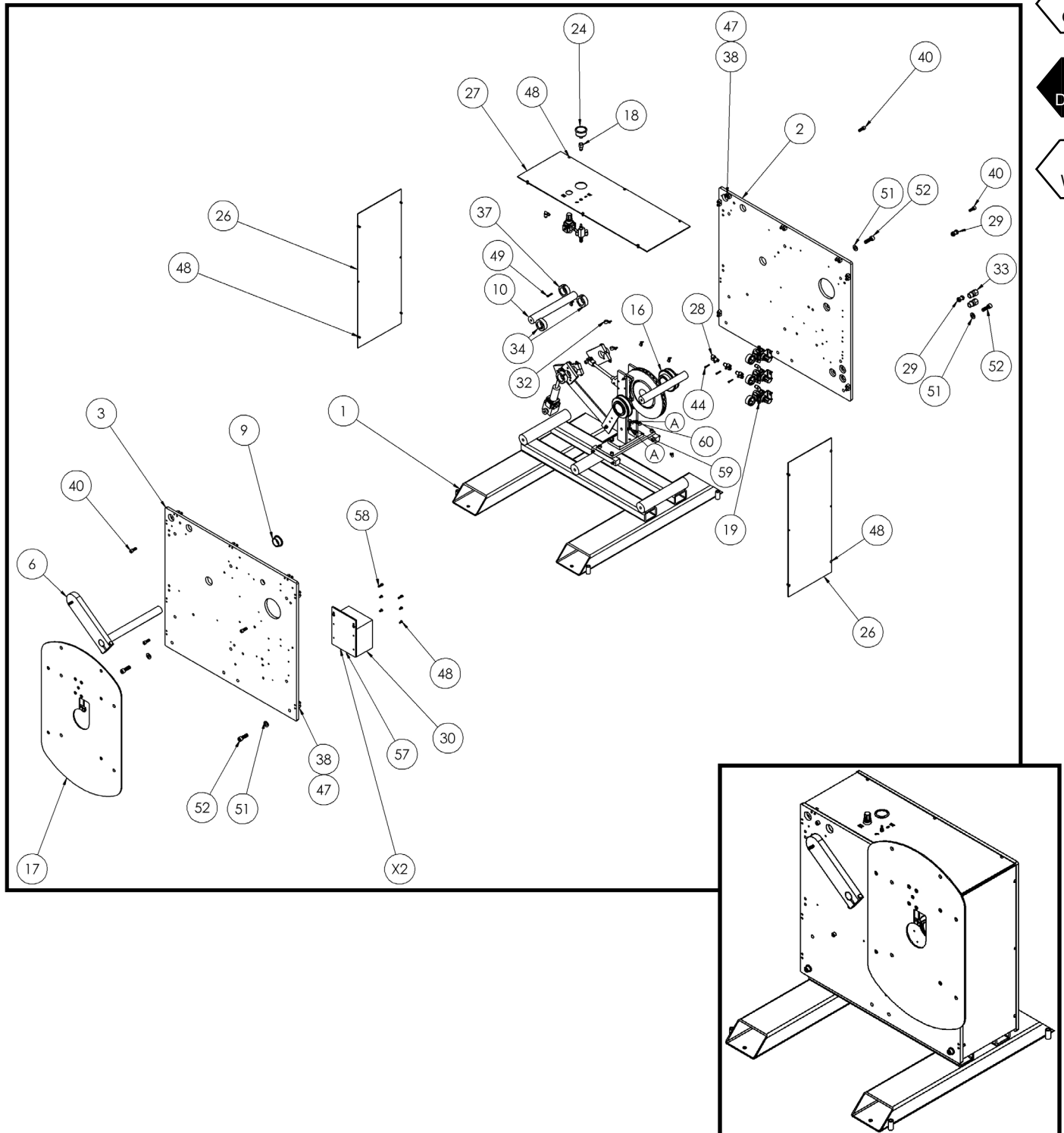
3:
Setup

4:
Oper

5:
DWGs

6:
Warr.

UDB Base Assembly, R to L (AZT: 17449)



AZTECH CONVERTING SYSTEMS

UDB USER MANUAL

1:
Gen.
Info

2:
Install

3:
Setup

4:
Oper.

5:
DWGs

6:
Warr.



ITEM NO.	PART NUMBER	DESCRIPTION	Default/QTY.
1	17429	UDB2 FRONT MAIN PLATE	1
2	17430	UDB2 REAR MAIN PLATE	1
3	2.0000er32	ER-32 BEARING	2
4	11418	BRAKE ROTOR ASSEMBLY	1
5	15928	UDB2, BRAKE ASSEMBLY	1
6	16017	UDB BRAKE SPRT BRACKET FOR BOTTOM PLATE	2
7	16016	UDB BRAKE SPRT BOTTOM PLATE	1
8	10515-C	DANCER ASSEMBLY, ROLL MASTER	1
9	15718	REWIND DIE CUTTER UNWIND BACK PLATTER ASSEMBLY	1
10	15884	REWIND DIE CUTTER DANCER PIVOT AIR LOCK ARM	1
11	1-38 flanged oilite	KAMFF1618	2
12	15389	AR25-N02H-Z PRESSURE ROD	1
13	15885	REWIND DIE CUTTER BRAKE REGULATOR PIVOT SPRT	1
14	15386	BSR BRAKE REGULATOR ASSEMBLY AR25	1
15	15889	INSPECTION REWINDER, DANCER PIVOT ARM	1
16	11568	1-3/8 SET COLLARS	1
17	10523	STANDOFF, FRAME, TOP, BASE UNIT	2
18	15894	MOUNT BLOCK 1/2 X 1/2 X 1 1/4-20 THREAD, TWO .257 HOLES THRU	14
19	1_2 STRAIN RELIEF ASSEMBLY	1/2" NON METALLIC LIQUID-TIGHT TYPW B CONNECTOR	2
20	AR20K-N01-Z	REGULATOR, MODULAR, AR MASS PRO	1
21	T8D-U	AIR GUAGE	1
22	SMC KQ2L07-34S	1/4 COMP TO 1/8 MPT	2
23	KQ2F07-35	1/4 ONE TOUCH TO 1/4 FEMALE PIPE THREAD	1
24	MJTV-3 ASSEMBLY	3 WAY 1/8 PORT TOGGLE VALVE	1
25	KQ2U07-00	NAME	3
26	22076	AIR REGULATOR WITH GUAGE AND FITTINGS	3
27	NY-125	ROD CLEVIS 3/8" CROSS HOLE 7/16-20 END THREAD	1
28	NCMC150-0400	AIR CYLINDER	1
29	BULK HEAD FITTING 1-4 TO 1-4 ONE TOUCH ASSEMBLY	1/4 TO 1/4 ONE TOUCH BLK HD FITTING	2
30	1_4 CORD CLAMP WITH BOLT	1/4 cord clamp with 8-32 x 1/2 button head cap screw	3
31	1_2 CORD CLAMP WITH BTHHD 8-32 X 1_2	1/2" CORD CLAMP WITH 8-32 X 1/2" BTNHD CAP SCREW	3
32	1-3EIGHTS COLLAR	1-3/8 SET COLLARS	3
33	17432	UDB2 SIDE COVER 2011	2
34	17431	UDB2 TOP COVER 2011	1
35	SCH_~190-32 UNF_1_SIMP	SOCKET HEAD CAP SCREW 10-32 X 1"	1
36	BTNHD_~250-20 UNC_0~5_SIMP	BUTTON HEAD CAP SCREW 1/4-20 X 1/2"	14
37	BTNHD_~375-16 UNC_1~5_SIMP	BUTTON HEAD CAP SCREW 3/8-16 X 1-1/2"	1
38	SCH_~375-16 UNC_1~25_SIMP	SOCKET HEAD CAP SCREW 3/8-16 X 1-1/4"	1
39	HEX NUT_~375-16 UNC_0_SIMP	HEX NUT 3/8-16	1
40	SCH_~375-16 UNC_1~75_SIMP	SOCKET HEAD CAP SCREW 3/8-16 X 1-3/4"	1
41	SCH_~375-16 UNC_1_SIMP	SOCKET HEAD CAP SCREW 3/8-16 X 1"	10
42	91034A110	11/16 HEX DIA X 1" LONG, 3/8-16 THREADED THRU	1
43	BTNHD_~164-32 UNC_1_SIMP	BUTTON HEAD CAP SCREW GRADE 5 8-32 X 1"	3
44	SCH_~375-16 UNC_1~5_SIMP	SOCKET HEAD CAP SCREW 3/8-16 X 1-1/2"	4
45	WSHR A_~375 HARD	3/8" HARD WASHER	1
46	SCH_~375-16 UNC_0~5_SIMP	SOCKET HEAD CAP SCREW 3/8-16 X 1/2"	1
47	SCH_~250-20 UNC_1_SIMP	SOCKET HEAD CAP SCREW 1/4-20 X 1"	28
48	WSHR A_~500 HARD	HARD FLAT WASHER 1/2"	6
49	SCH_~500-13 UNC_1~5_SIMP	SOCKET HEAD CAP SCREW 1/2-13 X 1-1/2"	6
50	6 X 6 X 4 SC BOX		1
51	HEX NUT_~250-20 UNC_0_LOCK	HEX NUT NYLOCK 1/4-20	1
52	HEX BOLT_~250-20 UNC_3~5_SIMP	HEX BOLT 1/4-20 X 3-1/2"	1
53	SSCR-HEX-CUP_~250-20 UNC_0.25_SIMP	SSCR 1/4-20 X 1/4	1
54	6111K22	LEVELING PAD, 1/2-13	4
55	15999	UDB2 BASE WELDMENT 40 SERIES	1
56	BTNHD_~250-20 UNC_0~25_SIMP	BUTTON HEAD CAP SCREW 1/4-20 X 1/4"	4
57	19121	6 X 6 SC BOX SPRT PLATE	1
58	SCH_~250-20 UNC_0~75_SIMP	SOCKET HEAD CAP SCREW 1/4-20 X 3/4"	2



1:
Gen.
Info

2:
Install

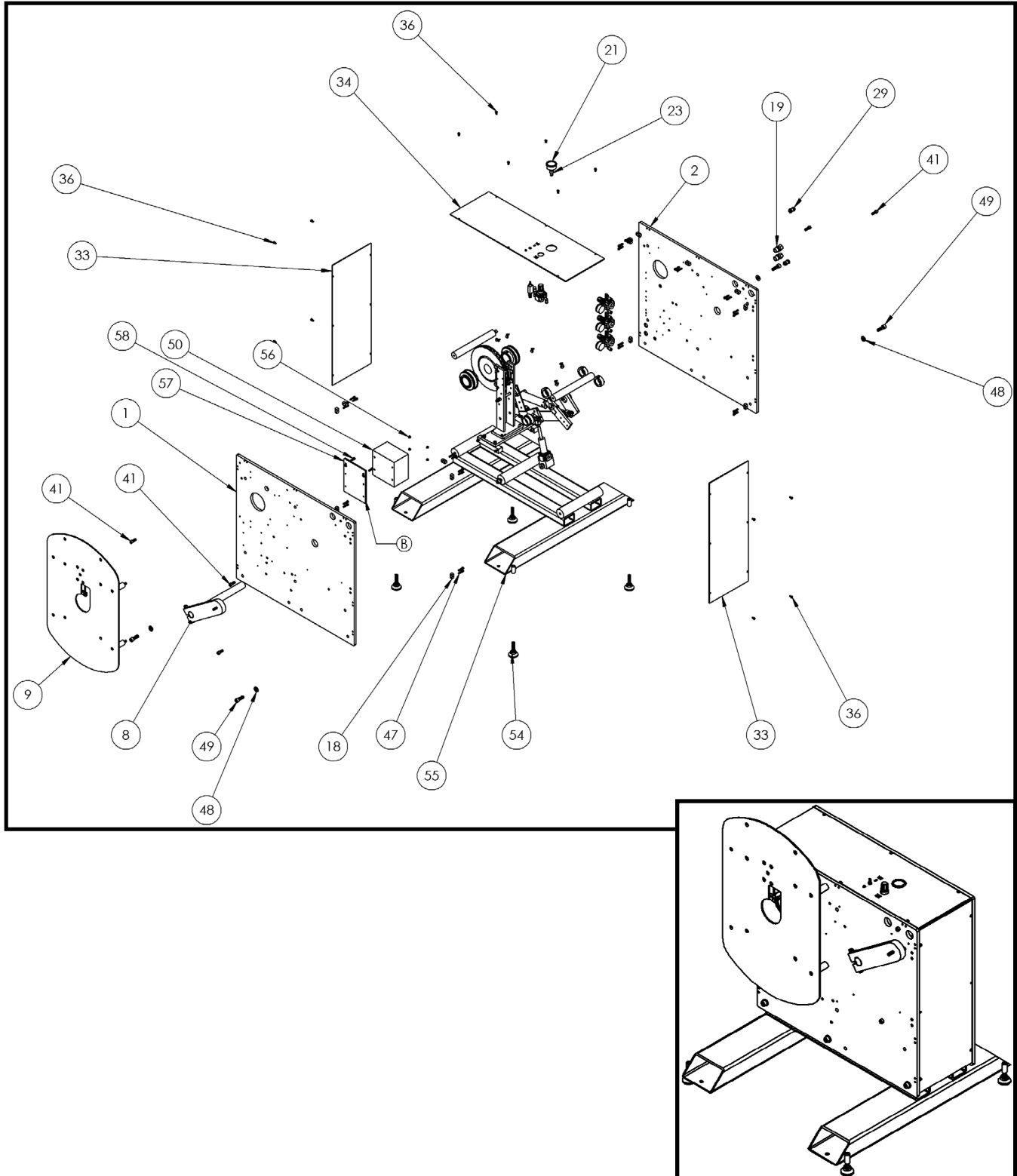
3:
Setup

4:
Oper

5:
DWGs

6:
Warr.

UDB Base Assembly , L to R (AZT: 17450)



AZTECH CONVERTING SYSTEMS

UDB USER MANUAL

1:
Gen.
Info

2:
Install

3:
Setup

4:
Oper.

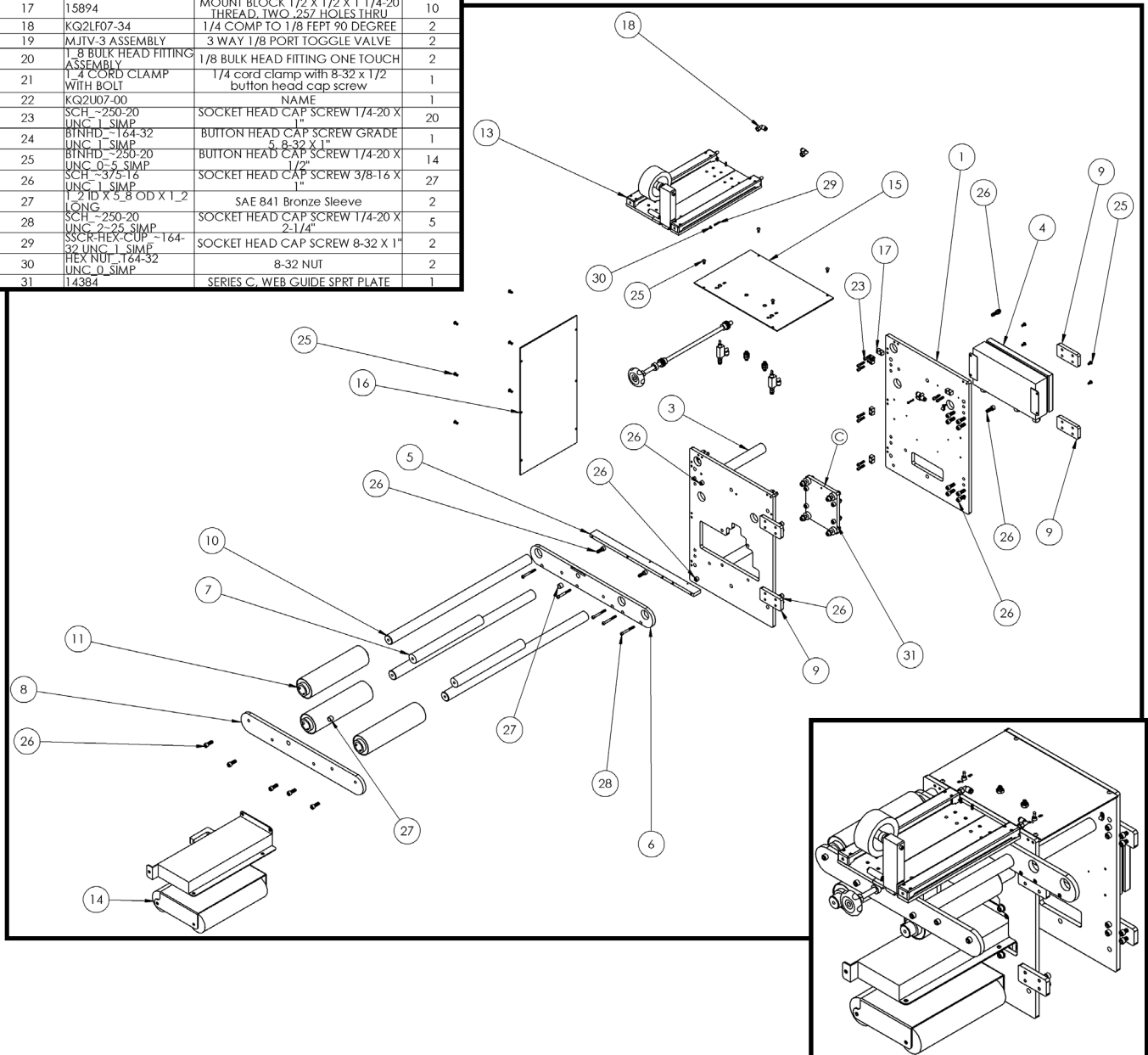
5:
DWGs

6:
Warr.



ITEM NO.	PART NUMBER	DESCRIPTION	Per Unit/ QTY.
1	16271	UDB2 REAR SPRT SPLICE TABLE AND WEB GUIDE PLATE TO L	1
2	16272	UDB2 FRONT SPRT SPLICE TABLE AND WEB GUIDE PLATE R TO L	1
3	10523	STANDOFF, FRAME, TOP, BASE UNIT	2
4	WEB GUIDE CONTROL BOX WITH CONNECTORS	ACCUWEB GUIDE CONTROL BOX WITH CONNECTORE	1
5	15942	UDB2 SLICE TABLE ALIGNMENT AND SPACER PLATE	1
6	16075	UDB2 REAR SLICE TABLE SPRT BAR R TO L	1
7	16285	REWIND DIE CUTTER SPLICE TABLE STANDOFF 10"	2
8	16076	UDB2 FRONT SLICE TABLE SPRT BAR L TO R	1
9	12070	BSR, DUAL ARBOR LINEUP PLATE	4
10	12052	IDLER SHAFT, 10", SERIES C	3
11	10787	IDLER ASSEMBLY, 1-3/8 BORE, 10"	3
12	16294	SPLICE TABLE PINION SHAFT ASSEMBLY 10"	1
13	15761	SPLICE TABLE ASSEMBLY 10"	1
14	WEB GUIDE R TO L-10	10" web guide right to left	1
15	16270	UDB2 40T3, WEB GUIDE AND SPLICE TABLE TOP COVER	1
16	16099	UDB2, NIP DRIVE SIDE COVER	1
17	15894	MOUNT BLOCK 1/2 X 1/2 X 1 1/4-20 THREAD, TWO, 25Z HOLES THRU	10
18	KQ2LF07-34	1/4 COMP TO 1/8 FEPT 90 DEGREE	2
19	MJTV-3 ASSEMBLY	3 WAY 1/8 PORT TOGGLE VALVE	2
20	1-8 BULK HEAD FITTING ASSEMBLY	1/8 BULK HEAD FITTING ONE TOUCH	2
21	1-4 CORD CLAMP WITH BOLT	1/4 cord clamp with 8-32 x 1/2 button head cap screw	1
22	KQ2U07-00	NAME	1
23	SCHL-250-20 UNC 1 SIMP	SOCKET HEAD CAP SCREW 1/4-20 X 1"	20
24	BTNHD-164-32 UNC 1 SIMP	BUTTON HEAD CAP SCREW GRADE 5 8-32 X 1"	1
25	BTNHD-250-20 UNC 0-5 SIMP	BUTTON HEAD CAP SCREW 1/4-20 X 1 1/2"	14
26	SCHL-375-16 UNC 1 SIMP	SOCKET HEAD CAP SCREW 3/8-16 X 1"	27
27	1-2 ID X 5-8 OD X 1-2 LONG	SAE 841 Bronze Sleeve	2
28	SCHL-250-20 UNC 2-25 SIMP	SOCKET HEAD CAP SCREW 1/4-20 X 2-1/4"	5
29	SSCR-HEX-CUP-164-32 UNC 1 SIMP	SOCKET HEAD CAP SCREW 8-32 X 1"	2
30	HEX NUT 164-32 UNC 0 SIMP	8-32 NUT	2
31	14384	SERIES C, WEB GUIDE SPRT PLATE	1

UDB Splice Table and Web Guide, R to L, 10" (AZT: 16284)



AZTECH CONVERTING SYSTEMS

UDB USER MANUAL



1:
Gen.
Info

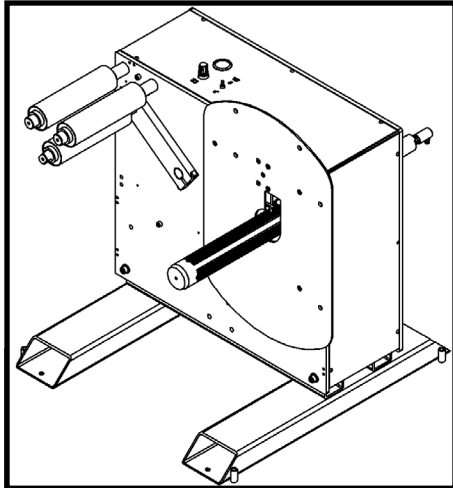
2:
Install

3:
Setup

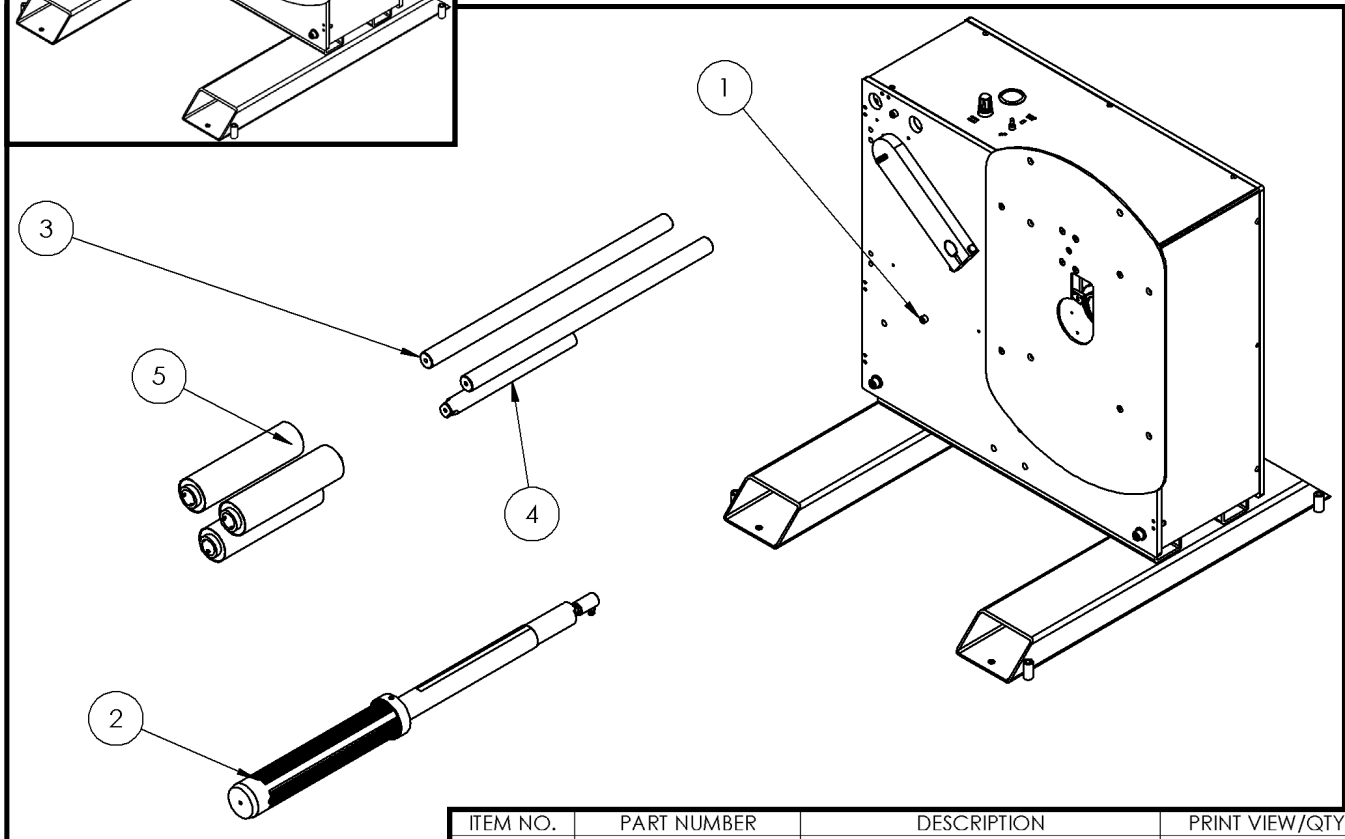
4:
Oper

5:
DWGs

6:
Warr.



UDB Base Unit, R to L, 10" (AZT: 17436)



ITEM NO.	PART NUMBER	DESCRIPTION	PRINT VIEW/QTY.
1	17449	UDB2, R TO L BASE 2011	1
2	12444	TRUE TURN ARBOR EXTRUSION ASSEMBLY, 13"	1
3	12052	IDLER SHAFT, 10", SERIES C	2
4	10789	IDLER SUPPORT SHAFT,DANCER,10"	1
5	10787	IDLER ASSEMBLY,1-3/8 BORE,10"	3

1:
Gen.
Info

2:
Install

3:
Setup

4:
Oper.

5:
DWGs

6:
Warr.

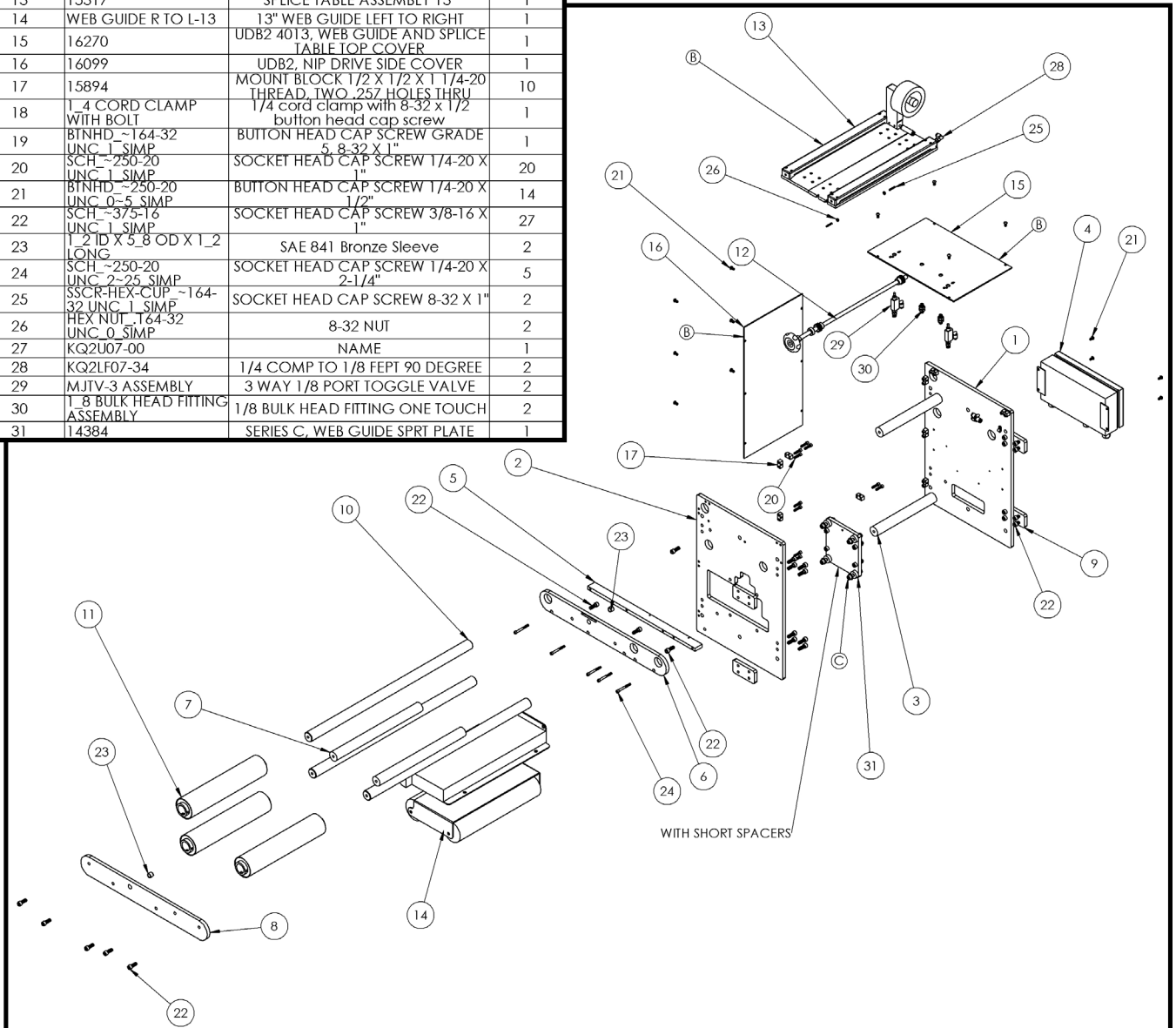
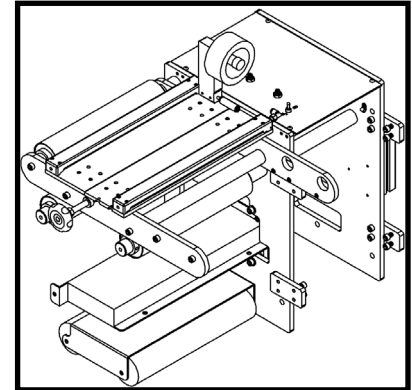


AZTECH CONVERTING SYSTEMS

UDB USER MANUAL

UDB Splice Table and Web Guide, R to L, 13" (AZT: 16074)

ITEM NO.	PART NUMBER	DESCRIPTION	Default/ QTY.
1	16271	UDB2 REAR SPRT SPICE TABLE AND WEB GUIDE PLATE R TO L	1
2	16272	UDB2 FRONT SPRT SPICE TABLE AND WEB GUIDE PLATE R TO L	1
3	10523	STANDOFF, FRAME, TOP, BASE UNIT	2
4		WEB GUIDE CONTROL BOX WITH CONNECTORS	1
5	15942	UDB2 SLICE TABLE ALINMENT AND SPACER PLATE	1
6	16075	UDB2 REAR SLICE TABLE SPRT BAR R TO L	1
7	15936	REWIND DIE CUTTER SPICE TABLE STANDOFF 13"	2
8	16076	UDB2 FRONT SLICE TABLE SPRT BAR L TO R	1
9	12070	BSR, DUAL ARBOR LINEUP PLATE	4
10	11254	IDLER SHAFT, 13", SERIES C	3
11	10585	IDLER ASSEMBLY, 1-3/8 BORE, 13"	3
12	15993	SPICE TABLE PINION SHAFT ASSEMBLY 13"	1
13	15317	SPICE TABLE ASSEMBLY 13"	1
14		13" WEB GUIDE LEFT TO RIGHT	1
15	16270	UDB2 4013, WEB GUIDE AND SPICE TABLE TOP COVER	1
16	16099	UDB2, NIP DRIVE SIDE COVER	1
17	15894	MOUNT BLOCK 1/2 X 1/2 X 1 1/4-20 THREAD, TWO .252 HOLES THRU 1/4 cord clamp with 8-32 x 1/2 button head cap screw	10
18		1-4 CORD CLAMP WITH BOLT	1
19	BTNHD-.164-32 UNC_1_SIMP	BUTTON HEAD CAP SCREW GRADE 5, 8-32 X 1"	1
20	SCH-.250-20 UNC_1_SIMP	SOCKET HEAD CAP SCREW 1/4-20 X 1"	20
21	BTNHD-.250-20 UNC_0-5_SIMP	BUTTON HEAD CAP SCREW 1/4-20 X 1/2"	14
22	SCH-.375-16 UNC_1_SIMP	SOCKET HEAD CAP SCREW 3/8-16 X 1"	27
23	1-2 ID X 5-8 OD X 1_2 LONG	SAE 841 Bronze Sleeve	2
24	SCH-.250-20 UNC_2-25_SIMP	SOCKET HEAD CAP SCREW 1/4-20 X 2-1/4"	5
25	SSCR-HEX-CUP-.164- 32 UNC_1_SIMP	SOCKET HEAD CAP SCREW 8-32 X 1"	2
26	HEX NUT-.164-32 UNC_0_SIMP	8-32 NUT	2
27	KQ2U07-00	NAME	1
28	KQ2LF07-34	1/4 COMP TO 1/8 FEPT 90 DEGREE	2
29	MJTV-3 ASSEMBLY	3 WAY 1/8 PORT TOGGLE VALVE	2
30	1-8 BULK HEAD FITTING ASSEMBLY	1/8 BULK HEAD FITTING ONE TOUCH	2
31	14384	SERIES C, WEB GUIDE SPRT PLATE	1



AZTECH CONVERTING SYSTEMS

UDB USER MANUAL



1:
Gen.
Info

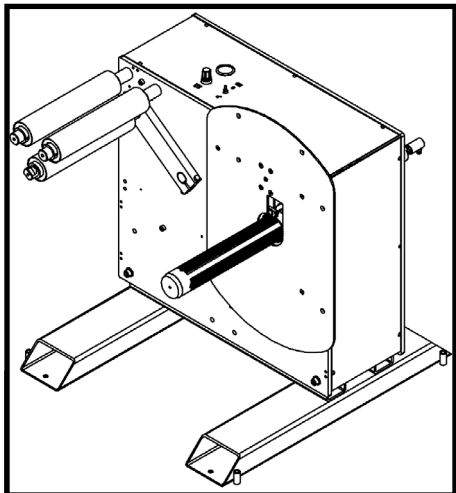
2:
Install

3:
Setup

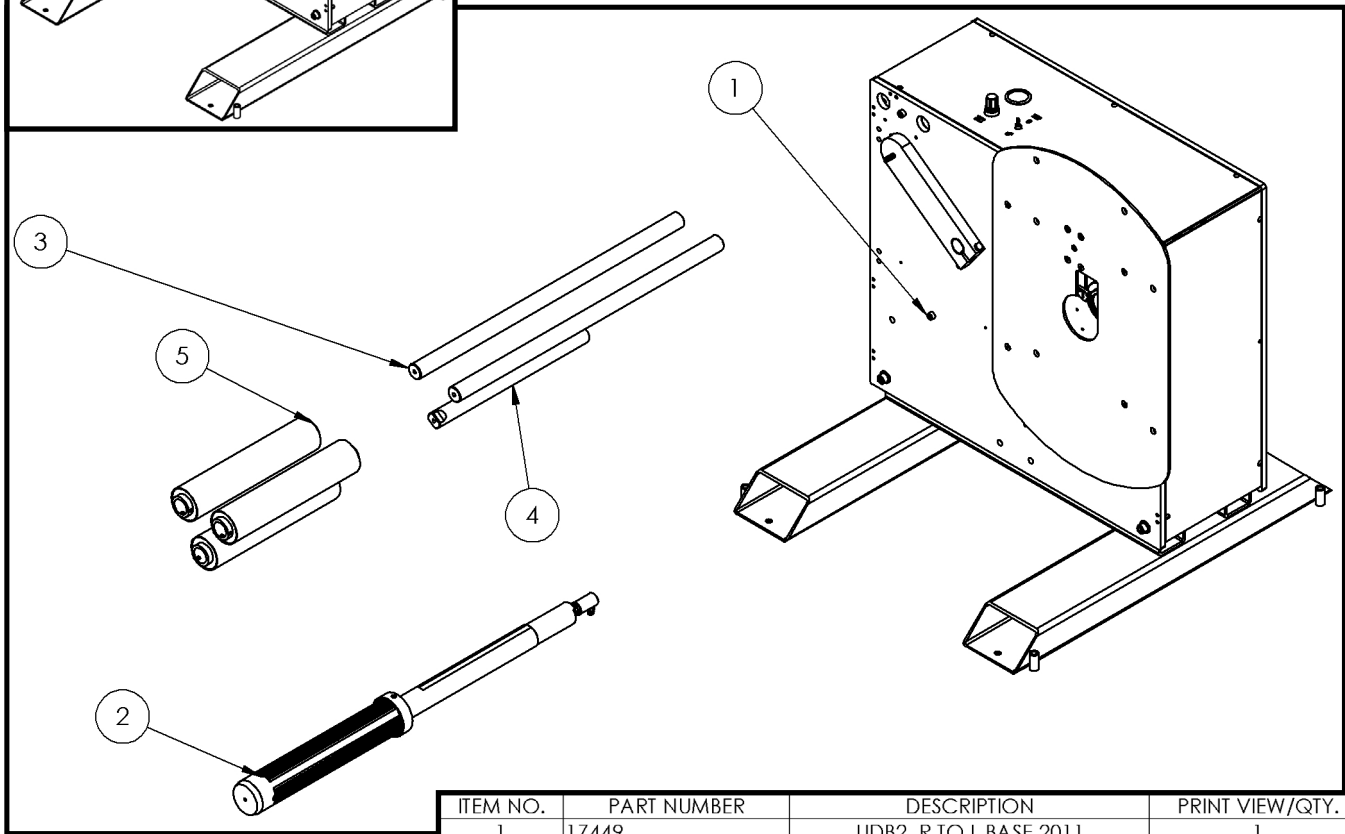
4:
Oper

5:
DWGs

6:
Warr.



UDB Base Unit, R to L, 13" (AZT: 17434)



ITEM NO.	PART NUMBER	DESCRIPTION	PRINT VIEW/QTY.
1	17449	UDB2, R TO L BASE 2011	1
2	12444	TRUE TURN ARBOR EXTRUSION ASSEMBLY, 13"	1
3	11254	IDLER SHAFT, 13", SERIES C	2
4	10597	IDLER SUPPORT SHAFT,DANCER,13"	1
5	10585	IDLER ASSEMBLY,1-3/8 BORE,13"	3

1:
Gen.
Info

2:
Install

3:
Setup

4:
Oper.

5:
DWGs

6:
Warr.

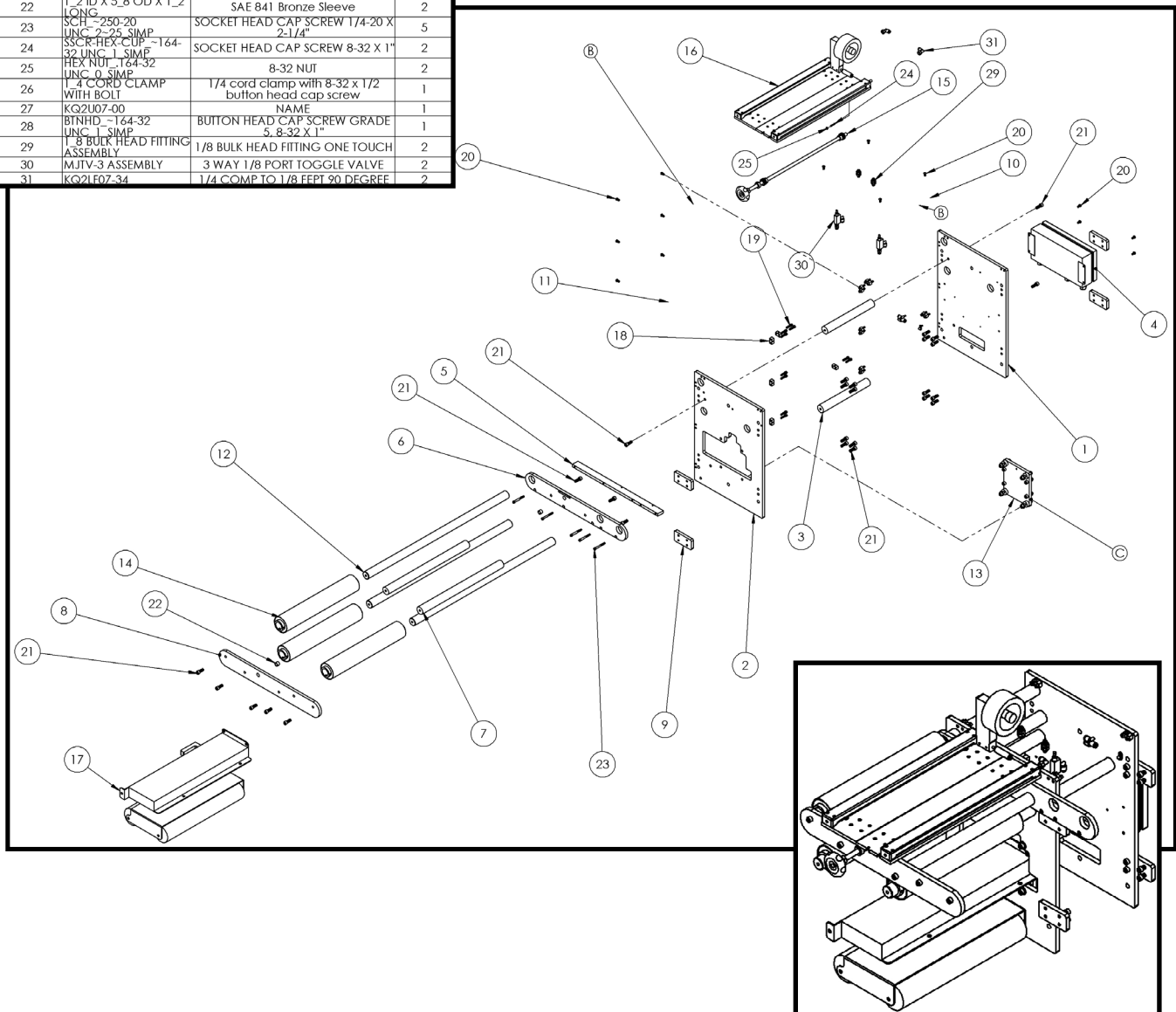


AZTECH CONVERTING SYSTEMS

UDB USER MANUAL

ITEM NO.	PART NUMBER	DESCRIPTION	QTY.
1	16271	UDB2 REAR SPRT SPLICE TABLE AND WEB GUIDE PLATE R TO L	1
2	16272	UDB2 FRONT SPRT SPLICE TABLE AND WEB GUIDE PLATE R TO L	1
3	10523	STANDOFF FRAME, TOP, BASE UNIT	2
4	WEB GUIDE CONTROL BOX WITH CONNECTORS	ACCUWEB GUIDE CONTROL BOX WITH CONNECTORS	1
5	15942	UDB2 SLICE TABLE ALIGNMENT AND SPACER PLATE	1
6	16075	UDB2 REAR SLICE TABLE SPRT BAR R TO L	1
7	16303	REWIND DIE CUTTER SPLICE TABLE STANDOFF 16"	2
8	16076	UDB2 FRONT SLICE TABLE SPRT BAR L TO R	1
9	12070	BSR, DUAL ARBOR LINEUP PLATE	4
10	16270	UDB2 4013, WEB GUIDE AND SPLICE TABLE TOP COVER	1
11	16099	UDB2, NIP DRIVE SIDE COVER	1
12	11875-B	IDLER SHAFT, 16", SERIES C	3
13	14384	SERIES C, WEB GUIDE SPRT PLATE	1
14	10592	IDLER ASSEMBLY, 1-3/8 BORE, 16"	3
15	16292	SPLICE TABLE PINION SHAFT ASSEMBLY 16"	1
16	15968	SPLICE TABLE ASSEMBLY 16"	1
17	WEB GUIDE R TO L-16		1
18	15894	MOUNT BLOCK 1/2 X 1/2 X 1 1/4-20 THREAD, TWO .257 HOLES THRU 1"	10
19	SCH -250-20 UNC-1 SIMP	SOCKET HEAD CAP SCREW 1/4-20 X 1"	20
20	BTNHD -250-20 UNC-0-5 SIMP	BUTTON HEAD CAP SCREW 1/4-20 X 1/2"	14
21	SCH -375-16 UNC-1 SIMP	SOCKET HEAD CAP SCREW 3/8-16 X 1"	27
22	1-2 ID X 5.8 OD X 1.2 LONG	SAE 841 Bronze Sleeve	2
23	SCH -250-20 UNC-2-25 SIMP	SOCKET HEAD CAP SCREW 1/4-20 X 2-1/4"	5
24	SSCR-HEX-CUP -164-32 UNC-1 SIMP	SOCKET HEAD CAP SCREW 8-32 X 1"	2
25	HEX NUT -164-32 UNC-0 SIMP	8-32 NUT	2
26	1-4 CORD CLAMP WITH BOLT	1/4 cord clamp with 8-32 x 1/2 button head cap screw	1
27	KQ2U07-00	NAME	1
28	BTNHD -164-32 UNC-1 SIMP	BUTTON HEAD CAP SCREW GRADE 5, 8-32 X 1"	1
29	1-8 BULK HEAD FITTING ASSEMBLY	1/8 BULK HEAD FITTING ONE TOUCH	2
30	MJTV-3 ASSEMBLY	3 WAY 1/8 PORT TOGGLE VALVE	2
31	KQ2LF07-34	1/4 COMP TO 1/8 FEPT 90 DEGREE	2

UDB, Splice Table and Web Guide, R to L, 16" (AZT: 16302)



AZTECH CONVERTING SYSTEMS

UDB USER MANUAL



1:
Gen.
Info

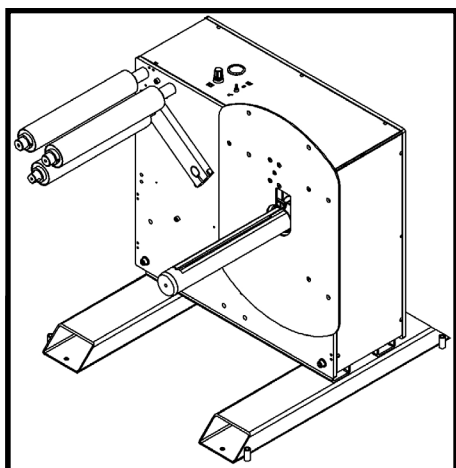
2:
Install

3:
Setup

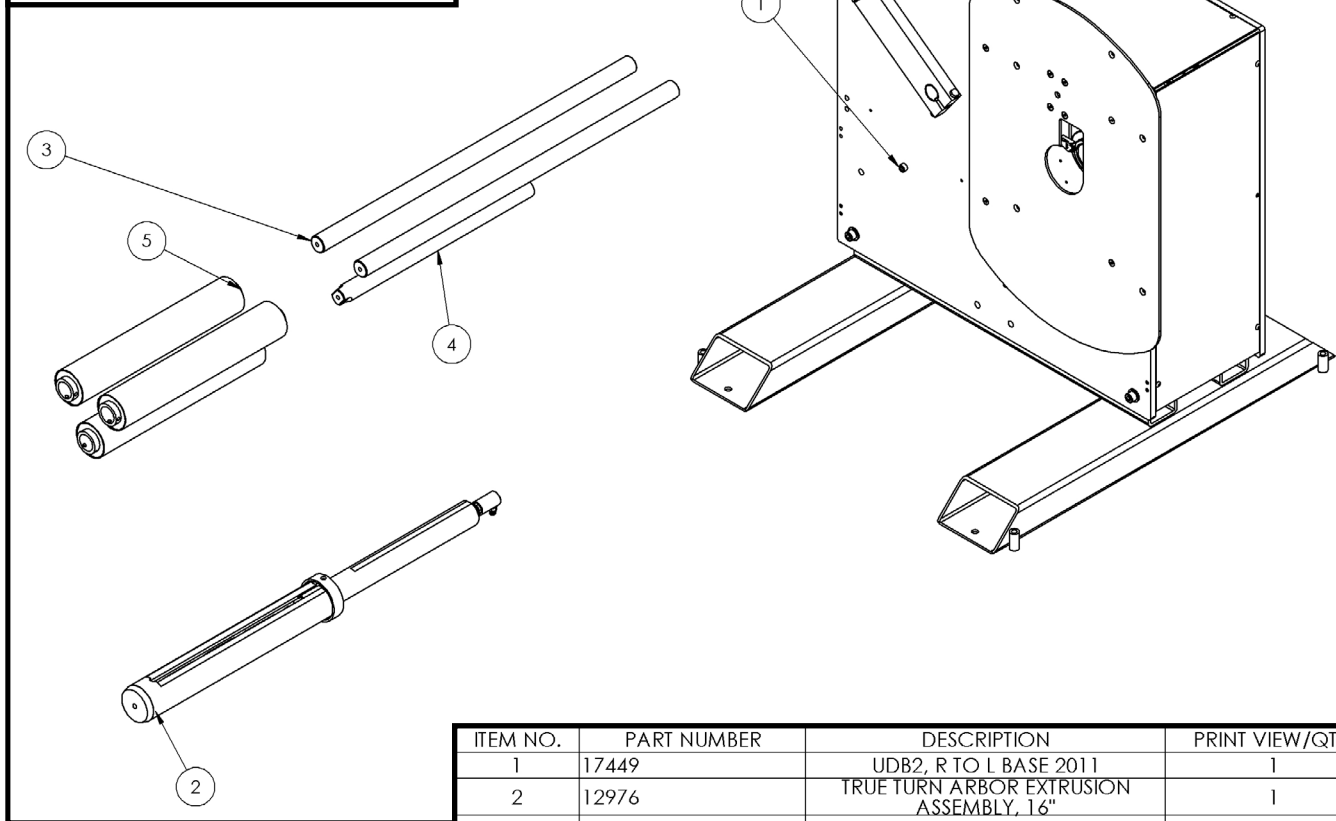
4:
Oper

5:
DWGs

6:
Warr.



UDB Base Unit, R to L, 16" (AZT: 17438)



ITEM NO.	PART NUMBER	DESCRIPTION	PRINT VIEW/QTY.
1	17449	UDB2, R TO L BASE 2011	1
2	12976	TRUE TURN ARBOR EXTRUSION ASSEMBLY, 16"	1
3	11875-B	IDLER SHAFT, 16", SERIES C	2
4	11876	BSR IDLER SUPPORT SHAFT, DANCER, 16"	1
5	10592	IDLER ASSEMBLY, 1-3/8 BORE, 16"	3

AZTECH CONVERTING SYSTEMS

UDB USER MANUAL

1:
Gen.
Info

2:
Install

3:
Setup

4:
Oper.

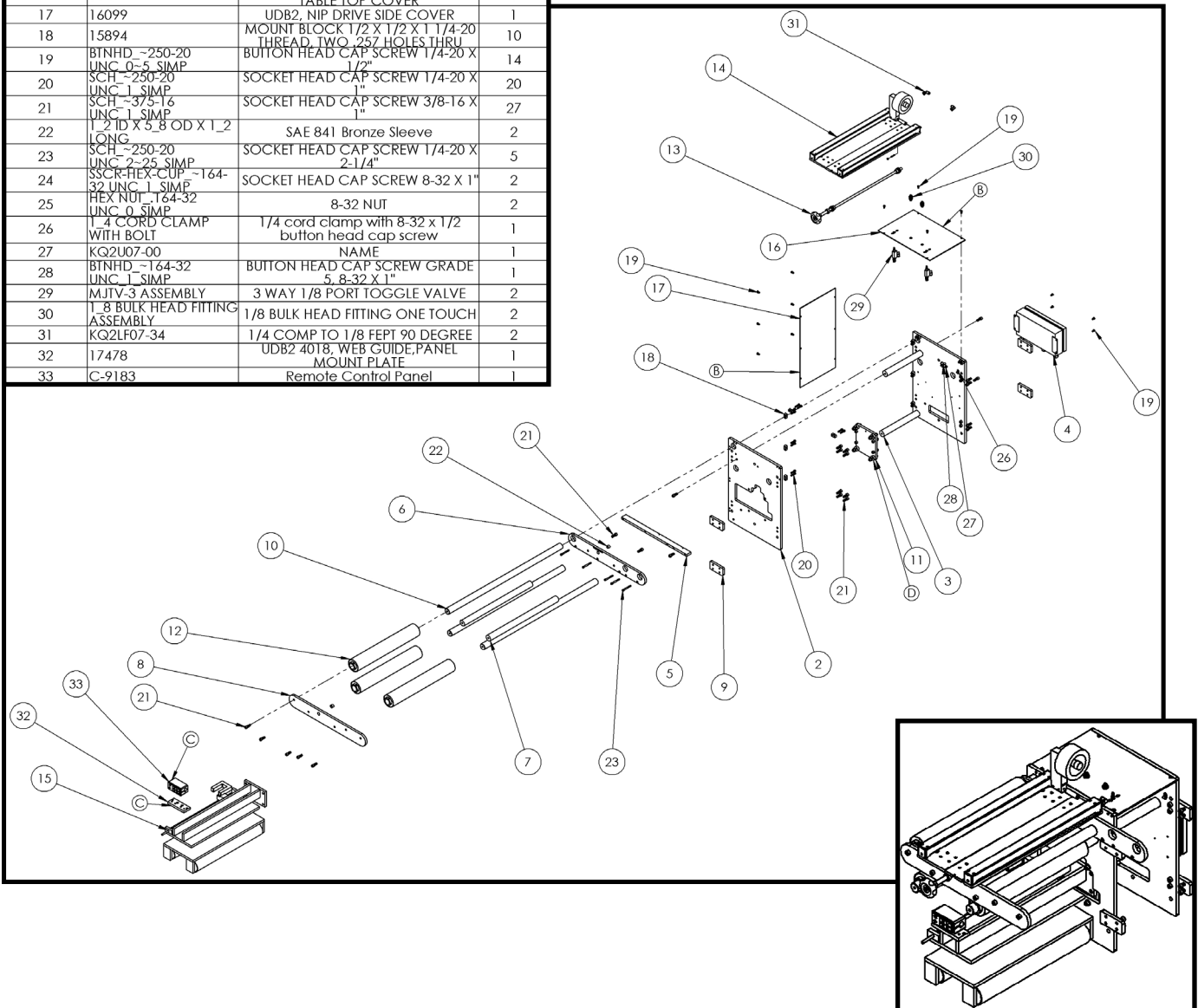
5:
DWGs

6:
Warr.



ITEM NO.	PART NUMBER	DESCRIPTION	QTY.
1	16271	UDB2 REAR SPRT SPICE TABLE AND WEB GUIDE PLATE R TO L	1
2	16272	UDB2 FRONT SPRT SPICE TABLE AND WEB GUIDE PLATE R TO L	1
3	10523	STANDOFF, FRAME, TOP, BASE UNIT	2
4	WEB GUIDE CONTROL BOX WITH CONNECTORS	ACCUWEB GUIDE CONTROL BOX WITH CONNECTORE	1
5	15942	UDB2 SLICE TABLE ALINMENT AND SPACER PLATE	1
6	16075	UDB2 REAR SLICE TABLE SPRT BAR R TO L	1
7	15623	REWIND DIE CUTTER SPICE TABLE STANDOFF 18"	2
8	16076	UDB2 FRONT SLICE TABLE SPRT BAR L TO R	1
9	12070	BSR, DUAL ARBOR LINEUP PLATE	4
10	12788	IDLER SHAFT, 18", SERIES C	3
11	14384	SERIES C, WEB GUIDE SPRT PLATE	1
12	12061	IDLER ASSEMBLY, 1-3/8 BORE, 18"	3
13	15624	REWIND DIE CUTTER SPICE TABLE PINION SHAFT ASSEMBLY 18"	1
14	15500	SPICE TABLE ASSEMBLY 18"	1
15	WEB GUIDE 18 IN NARROW L TO R ASSEMBLY	18" WEB GUIDE LEFT TO RIGHT	1
16	16270	UDB2 4013, WEB GUIDE AND SPICE TABLE TOP COVER	1
17	16099	UDB2, NIP DRIVE SIDE COVER	1
18	15894	MOUNT BLOCK 1/2 X 1/2 X 1 1/4-20 THREAD, TWO, 257 HOLES THRU	10
19	BTNHD -250-20 UNC -5 SIMP	BUTTON HEAD CAP SCREW 1/4-20 X 1 1/2"	14
20	SCH -250-20 UNC -1 SIMP	SOCKET HEAD CAP SCREW 1/4-20 X 1"	20
21	SCH -375-16 UNC -1 SIMP	SOCKET HEAD CAP SCREW 3/8-16 X 1"	27
22	1-2 ID X 5-8 OD X 1-2 LONG	SAE 841 Bronze Sleeve	2
23	SCH -250-20 UNC -2-25 SIMP	SOCKET HEAD CAP SCREW 1/4-20 X 2-1/4"	5
24	SSCR-HEX-CUP -164-32 UNC -1 SIMP	SOCKET HEAD CAP SCREW 8-32 X 1"	2
25	HEX NUT -164-32 UNC -0 SIMP	8-32 NUT	2
26	1-4 CORD CLAMP WITH BOLT	1/4 cord clamp with 8-32 x 1/2 button head cap screw	1
27	KQ2U07-00	NAME	1
28	BTNHD -164-32 UNC -1 SIMP	BUTTON HEAD CAP SCREW GRADE 5 8-32 X 1"	1
29	MJTV-3 ASSEMBLY	3 WAY 1/8 PORT TOGGLE VALVE	2
30	1-8 BULK HEAD FITTING ASSEMBLY	1/8 BULK HEAD FITTING ONE TOUCH	2
31	KQ2LF07-34	1/4 COMP TO 1/8 FEPT 90 DEGREE	2
32	17478	UDB2 4018, WEB GUIDE, PANEL MOUNT PLATE	1
33	C-9183	Remote Control Panel	1

UDB Splice Table and Web Guide, R to L, 18" (AZT: 15928)



AZTECH CONVERTING SYSTEMS

UDB USER MANUAL



1:
Gen.
Info

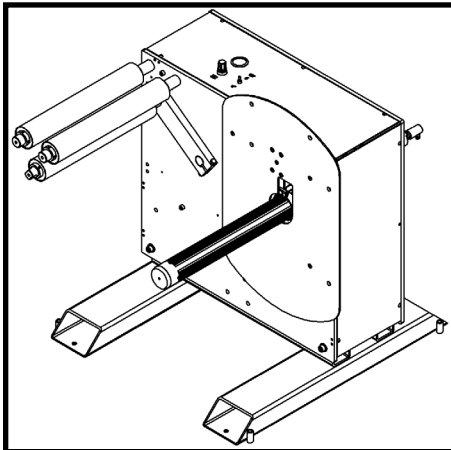
2:
Install

3:
Setup

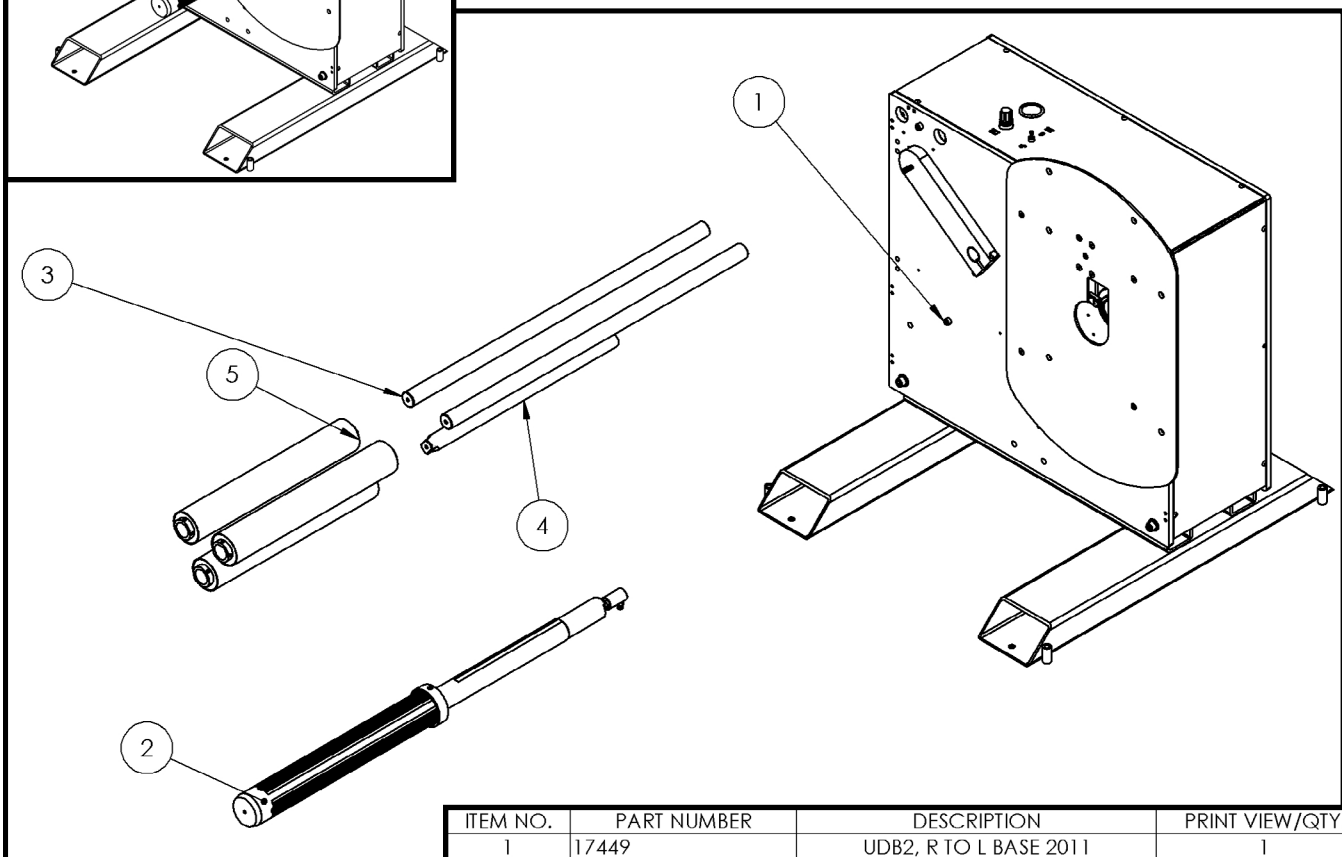
4:
Oper

5:
DWGs

6:
Warr.



UDB Base Assembly, R to L, 18" (AZT: 17440)



ITEM NO.	PART NUMBER	DESCRIPTION	PRINT VIEW/QTY.
1	17449	UDB2, R TO L BASE 2011	1
2	13731	TRUE TURN ARBOR EXTRUSION ASSEMBLY, 18"	1
3	12788	IDLER SHAFT, 18", SERIES C	2
4	12805	IDLER SUPPORT SHAFT,DANCER,18"	1
5	12061	IDLER ASSEMBLY,1-3/8 BORE,18"	3

1:
Gen.
Info

2:
Install

3:
Setup

4:
Oper.

5:
DWGs

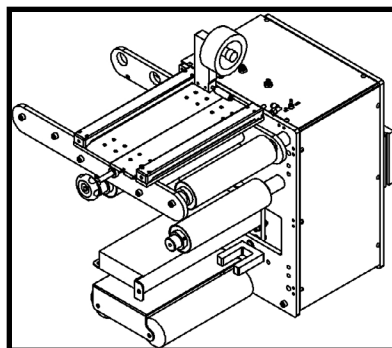
6:
Warr.



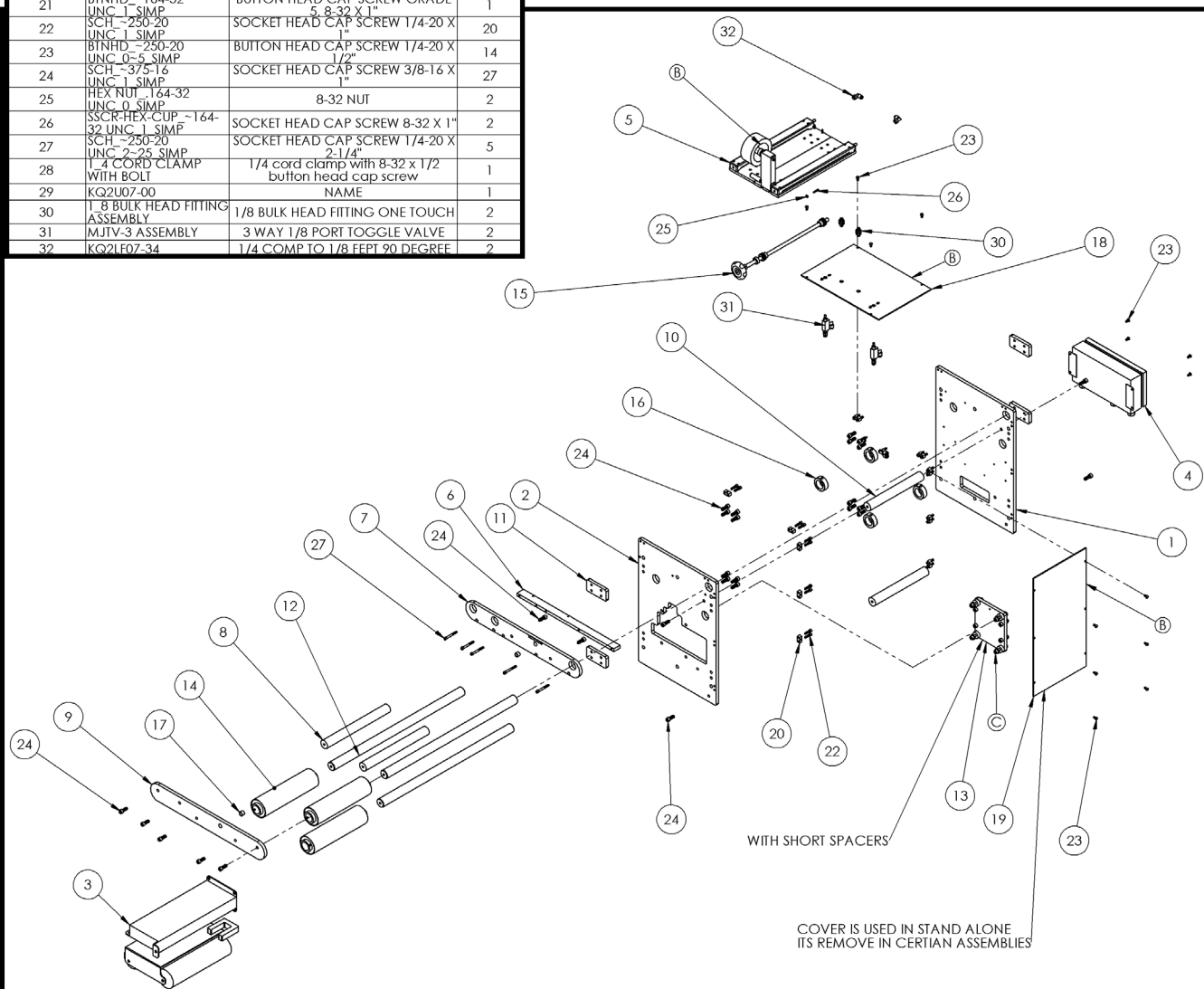
AZTECH CONVERTING SYSTEMS

UDB USER MANUAL

UDB Splice Table and Web Guide, R to L 10" (AZT: 15928)



ITEM NO.	PART NUMBER	DESCRIPTION	Default Qty.
1	16271	UDB2 REAR SPRT SPLICE TABLE AND WEB GUIDE PLATE R TO L	1
2	16272	UDB2 FRONT SPRT SPLICE TABLE AND WEB GUIDE PLATE R TO L	1
3		10" LEFT TO RIGHT WEB GUIDE	1
4		WEB GUIDE CONTROL BOX WITH CONNECTORS	1
5	15761	ACCUWEB GUIDE CONTROL BOX WITH CONNECTORS	1
6	15942	SPLICE TABLE ASSEMBLY 10"	1
7	15935	UDB2 SLICE TABLE ALIGNMENT AND SPACER PLATE	1
8	16285	UDB2 REAR SLICE TABLE SPRT BAR	1
9	15934	REWIND DIE CUTTER SPLICE TABLE STANDOFF 10"	2
10	10523	UDB2 FRONT SLICE TABLE SPRT BAR	1
11	12070	STANDOFF FRAME, TOP, BASE UNIT	2
12	12052	BSR, DUAL ARBOR LINEUP PLATE	4
13	14384	IDLER SHAFT, 10", SERIES C	3
14	10787	SERIES C, WEB GUIDE SPRT PLATE	1
15	16294	IDLER ASSEMBLY, 1-3/8 BORE, 10"	3
16		SPLICE TABLE PINION SHAFT ASSEMBLY 10"	1
17	1-3EIGHTS COLLAR	1-3/8 SET COLLARS	4
18	T 2 ID X 5.8 OD X T 2 LONG	SAE 841 Bronze Sleeve	2
19	16270	UDB2 4013, WEB GUIDE AND SPLICE TABLE TOP COVER	1
20	16099	UDB2, NIP DRIVE SIDE COVER	1
21	15894	MOUNT BLOCK 1/2 X 1/2 X 1 1/4-20 THREAD, TWO, 257 HOLES THRU	10
22	BTNHD - 164-32 UNC 1 SIMP SCH - 250-20 UNC 1 SIMP	BUTTON HEAD CAP SCREW GRADE 5, 8-32 X 1"	1
23	BTNHD - 250-20 UNC 0-5 SIMP SCH - 3/5-16 UNC 1 SIMP	SOCKET HEAD CAP SCREW 1/4-20 X 1"	20
24	BTNHD - 250-20 UNC 0-5 SIMP SCH - 3/5-16 UNC 1 SIMP	BUTTON HEAD CAP SCREW 1/4-20 X 1 1/2"	14
25	HEX NUT - 164-32 UNC 0 SIMP	SOCKET HEAD CAP SCREW 3/8-16 X 1"	27
26	SSCR-HEX-CUP - 164-32 UNC 1 SIMP SCH - 250-20 UNC 2-25 SIMP	8-32 NUT	2
27	T 4 CORD CLAMP WITH BOLT	SOCKET HEAD CAP SCREW 8-32 X 1"	2
28	KQ2U07-00	SOCKET HEAD CAP SCREW 1/4-20 X 2-1/4"	5
29	T 8 BULK HEAD FITTING ASSEMBLY	1/4 cord clamp with 8-32 x 1/2 button head cap screw	1
30	MJTV-3 ASSEMBLY	NAME	1
31	KQ2LF07-34	1/8 BULK HEAD FITTING ONE TOUCH	2
32		3 WAY 1/8 PORT TOGGLE VALVE	2
		1/4 COMP TO 1/8 FEPT 90 DEGREE	2



AZTECH CONVERTING SYSTEMS

UDB USER MANUAL



1:
Gen.
Info

2:
Install

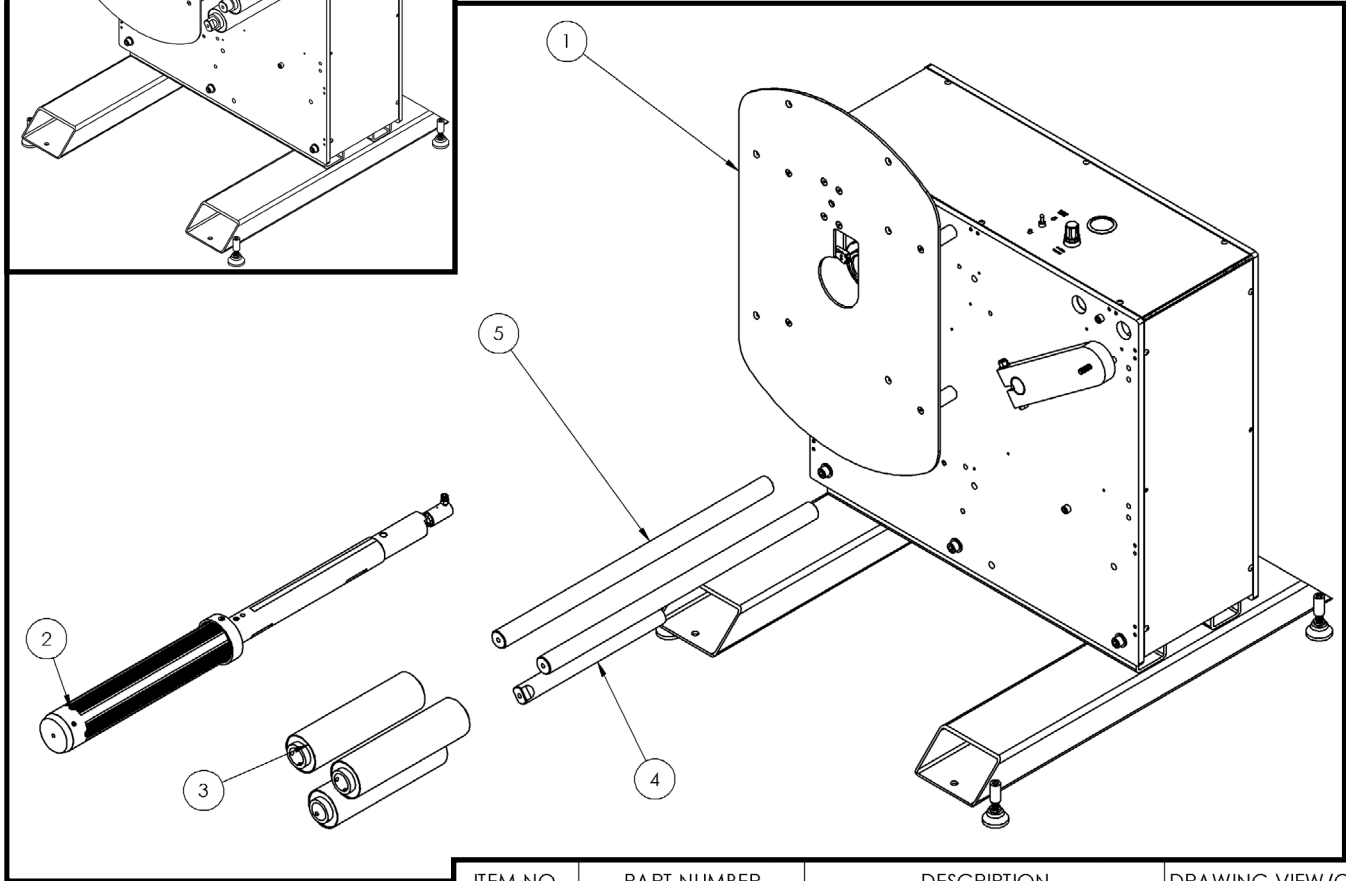
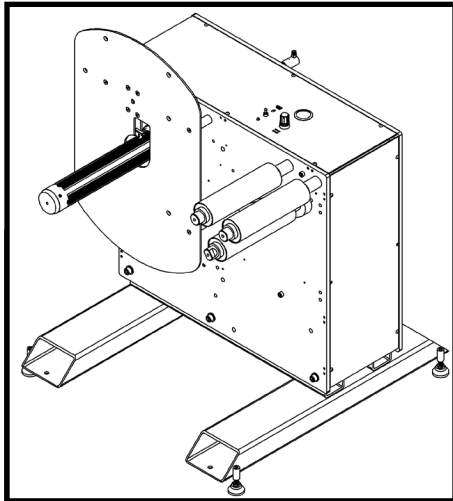
3:
Setup

4:
Oper

5:
DWGs

6:
Warr.

UDB Base Unit, L to R, 10" (AZT: 17435)



ITEM NO.	PART NUMBER	DESCRIPTION	DRAWING VIEW/QTY.
1	17450	UDB2, L TO R BASE 2011	1
2	12444	TRUE TURN ARBOR EXTRUSION ASSEMBLY, 13"	1
3	10787	IDLER ASSEMBLY, 1-3/8 BORE, 10"	3
4	10789	IDLER SUPPORT SHAFT, DANCER, 10"	1
5	12052	IDLER SHAFT, 10", SERIES C	2

AZTECH CONVERTING SYSTEMS

UDB USER MANUAL

1:
Gen.
Info

2:
Install

3:
Setup

4:
Oper.

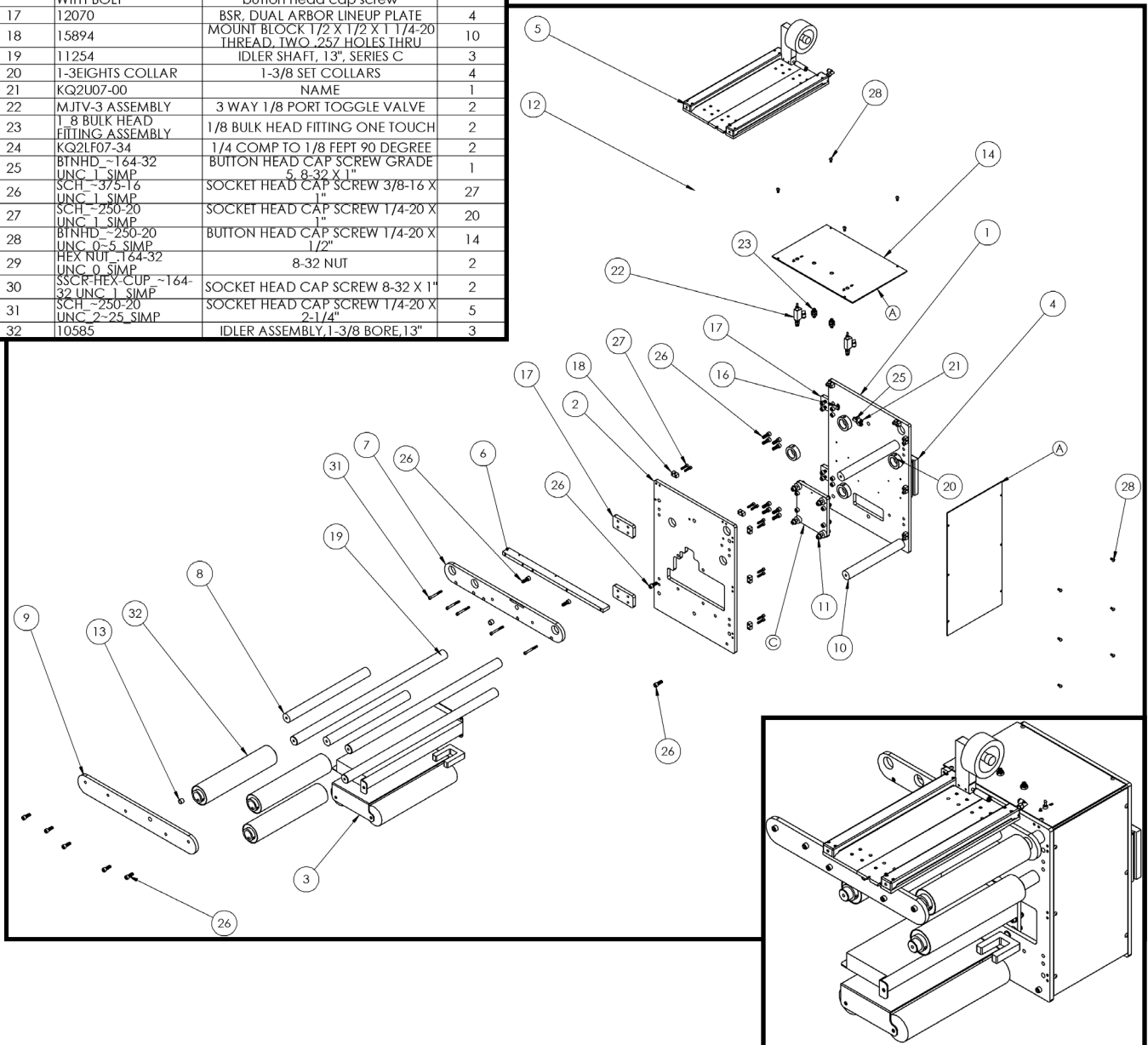
5:
DWGs

6:
Warr.



ITEM NO.	PART NUMBER	DESCRIPTION	Default/Qty.
1	16271	UDB2 REAR SPRT SPICE TABLE AND WEB GUIDE PLATE R TO L	1
2	16272	UDB2 FRONT SPRT SPICE TABLE AND WEB GUIDE PLATE R TO L	1
3	15317	13" LEFT TO RIGHT WEB GUIDE	1
4	15935	ACCUEWEB GUIDE CONTROL BOX WITH CONNECTORS	1
5	15317	SPICE TABLE ASSEMBLY 13"	1
6	15942	UDB2 SLICE TABLE ALIGNMENT AND SPACER PLATE	1
7	15935	UDB2 REAR SLICE TABLE SPRT BAR	1
8	15936	REWIND DIE CUTTER SPICE TABLE STANDOFF 13"	2
9	15934	UDB2 FRONT SLICE TABLE SPRT BAR	1
10	10523	STANDOFF, FRAME, TOP, BASE UNIT	2
11	14384	SERIES C, WEB GUIDE SPRT PLATE	1
12	15993	SPICE TABLE PINION SHAFT ASSEMBLY 13"	1
13	1 2 ID X 5.8 OD X 1.2 LONG	SAE 841 Bronze Sleeve	2
14	16270	UDB2 4013, WEB GUIDE AND SPICE TABLE TOP COVER	1
15	16099	UDB2, NIP DRIVE SIDE COVER	1
16	1 4 CORD CLAMP WITH BOLT	1/4 cord clamp with 8-32 x 1/2 button head cap screw	1
17	12070	BSR, DUAL ARBOR LINEUP PLATE	4
18	15894	MOUNT BLOCK 1/2 X 1/2 X 1 1/4-20 THREAD, TWO .257 HOLES THRU	10
19	11254	IDLER SHAFT, 13", SERIES C	3
20	1-3EIGHTS COLLAR	1-3/8 SET COLLARS	4
21	KQ2U07-00	NAME	1
22	MJTV-3 ASSEMBLY	3 WAY 1/8 PORT TOGGLE VALVE	2
23	1 8 BULK HEAD FITTING ASSEMBLY	1/8 BULK HEAD FITTING ONE TOUCH	2
24	KQ2LF07-34	1/4 COMP TO 1/8 FEPT 90 DEGREE	2
25	BTNHD -164-32 UNC 1 SIMP	BUTTON HEAD CAP SCREW GRADE 5 8-32 X 1"	1
26	SCH -375-16 UNC 1 SIMP	SOCKET HEAD CAP SCREW 3/8-16 X 1"	27
27	SCH -250-20 UNC 1 SIMP	SOCKET HEAD CAP SCREW 1/4-20 X 1"	20
28	BTNHD -250-20 UNC 0-5 SIMP	BUTTON HEAD CAP SCREW 1/4-20 X 1/2"	14
29	HEX NUT -164-32 UNC 0 SIMP	8-32 NUT	2
30	SSCR-HEX-CUP ~164-32 UNC 1 SIMP	SOCKET HEAD CAP SCREW 8-32 X 1"	2
31	SCH -250-20 UNC 2-25 SIMP	SOCKET HEAD CAP SCREW 1/4-20 X 2-1/4"	5
32	10585	IDLER ASSEMBLY, 1-3/8 BORE, 13"	3

UDB Splice Table and Web Guide, L to R, 13" (AZT: 16018)



AZTECH CONVERTING SYSTEMS

UDB USER MANUAL



1:
Gen.
Info

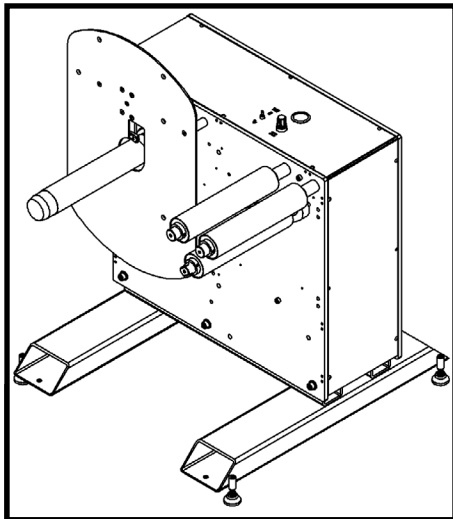
2:
Install

3:
Setup

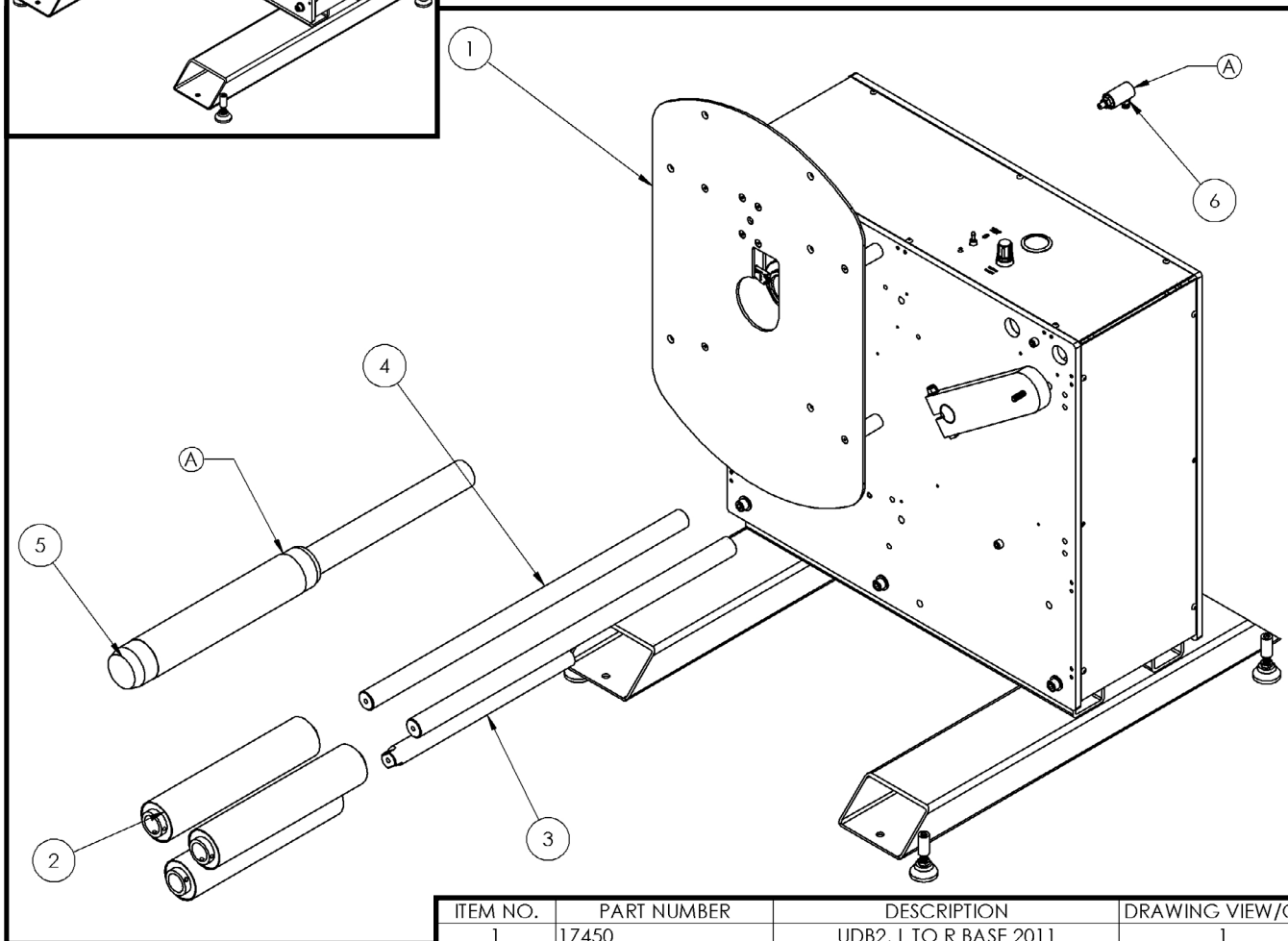
4:
Oper

5:
DWGs

6:
Warr.



UDB Base Assembly, L to R, 13" (AZT: 17433)



ITEM NO.	PART NUMBER	DESCRIPTION	DRAWING VIEW/QTY.
1	17450	UDB2, L TO R BASE 2011	1
2	10585	IDLER ASSEMBLY, 1-3/8 BORE, 13"	3
3	10597	IDLER SUPPORT SHAFT, DANCER, 13"	1
4	11254	IDLER SHAFT, 13", SERIES C	2
5	18784	ONE PIECE 3" ARBOR 13" WEB WITH 2" DIA 15" SPRT SHAFT	1
6	19142	CONVERTECH ROTARY UNION AND AIR ADAPTER CAP ASSEMBLY	1

1:
Gen.
Info

2:
Install

3:
Setup

4:
Oper.

5:
DWGs

6:
Warr.

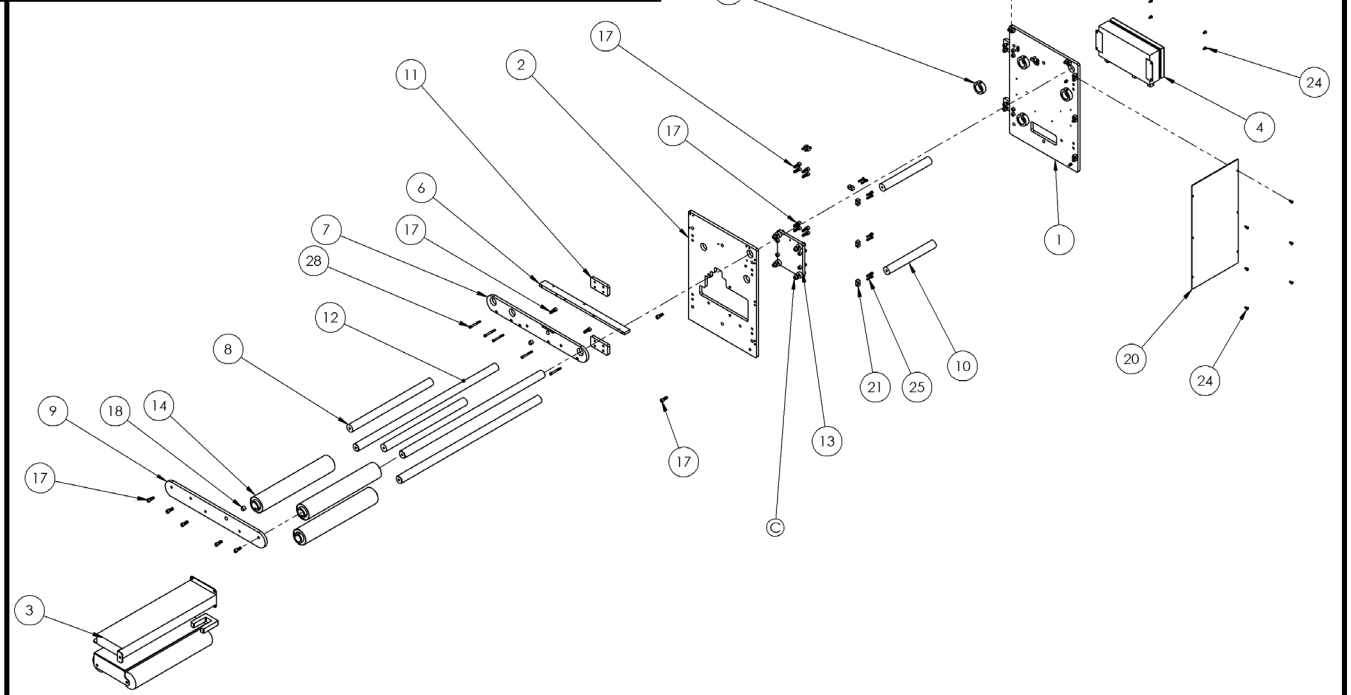
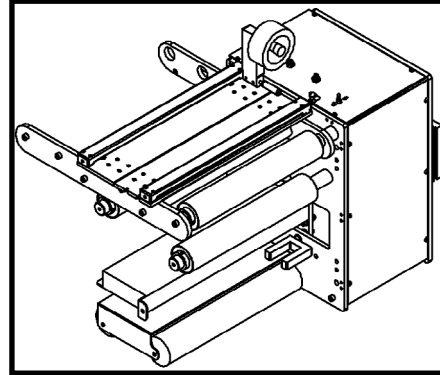


AZTECH CONVERTING SYSTEMS

UDB USER MANUAL

ITEM NO.	PART NUMBER	DESCRIPTION	DetQty/ QTY.
1	16271	UDB2 REAR SPRT SPICE TABLE AND WEB GUIDE PLATE R TO L	1
2	16272	UDB2 FRONT SPRT SPICE TABLE AND WEB GUIDE PLATE R TO L	1
3	WEB GUIDE L TO R-16	16" LEFT TO RIGHT WEB GUIDE	1
4	WEB GUIDE CONTROL BOX WITH CONNECTORS	ACCUWEB GUIDE CONTROL BOX WITH CONNECTORE	1
5	15968	SPICE TABLE ASSEMBLY 16"	1
6	15942	UDB2 SLICE TABLE ALIGNMENT AND SPACER PLATE	1
7	15935	UDB2 REAR SLICE TABLE SPRT BAR	1
8	16303	REWIND DIE CUTTER SPICE TABLE STANDOFF 16"	2
9	15934	UDB2 FRONT SLICE TABLE SPRT BAR	1
10	10523	STANDOFF,FRAME, TOP, BASE UNIT	2
11	12070	BSR, DUAL ARBOR LINEUP PLATE	4
12	11875-B	IDLER SHAFT, 16", SERIES C	3
13	14384	SERIES C, WEB GUIDE SPRT PLATE	1
14	10592	IDLER ASSEMBLY, 1-3/8 BORE, 16"	3
15	16292	SPICE TABLE PINION SHAFT ASSEMBLY 16"	1
16	1-3EIGHTS COLLAR	1-3/8 SET COLLARS	4
17	SCH ~375-16 UNC 1 SIMP	SOCKET HEAD CAP SCREW 3/8-16 X 1"	27
18	1-2 ID X 5.8 OD X 1.2 LONG	SAE 841 Bronze Sleeve	2
19	16270	UDB2 4013, WEB GUIDE AND SPICE TABLE TOP COVER	1
20	16099	UDB2, NIP DRIVE SIDE COVER	1
21	15894	MOUNT BLOCK 1/2 X 1/2 X 1 1/4-20 THREAD, TWO .257 HOLES THRU 1/4 cord clamp with 8-32 x 1/2 button head cap screw	10
22	1-4 CORD CLAMP WITH BOLT	BUTTON HEAD CAP SCREW GRADE 5-8-32 X 1"	1
23	BTNHD ~164-32 UNC 1 SIMP	BUTTON HEAD CAP SCREW 1/4-20 X 1 1/2"	14
24	BTNHD ~250-20 UNC 0-5 SIMP	SOCKET HEAD CAP SCREW 1/4-20 X 1"	20
25	SCH ~250-20 UNC 1 SIMP	8-32 NUT	2
26	HEX NUT ~164-32 UNC 0 SIMP	SOCKET HEAD CAP SCREW 8-32 X 1"	2
27	SSCR-HEX-CUP ~164-32 UNC 1 SIMP	SOCKET HEAD CAP SCREW 1/4-20 X 2-1/4"	5
28	SCH ~250-20 UNC 2-25 SIMP	1/4 COMP TO 1/8 FEPT 90 DEGREE NAME	1
29	KQ2LF07-34	1/8 BULK HEAD FITTING ONE TOUCH ASSEMBLY	2
30	KQ2U07-00	3 WAY 1/8 PORT TOGGLE VALVE	2
31	1-8 BULK HEAD FITTING ASSEMBLY		
32	MJTV-3 ASSEMBLY		

UDB Splice Table and Web Guide L to R, 16" (AZT: 16288)



AZTECH CONVERTING SYSTEMS

UDB USER MANUAL



1:
Gen.
Info

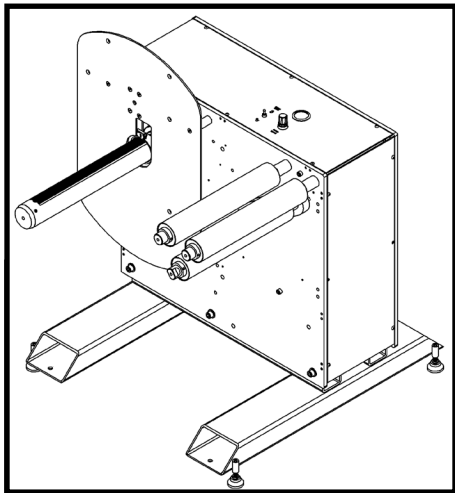
2:
Install

3:
Setup

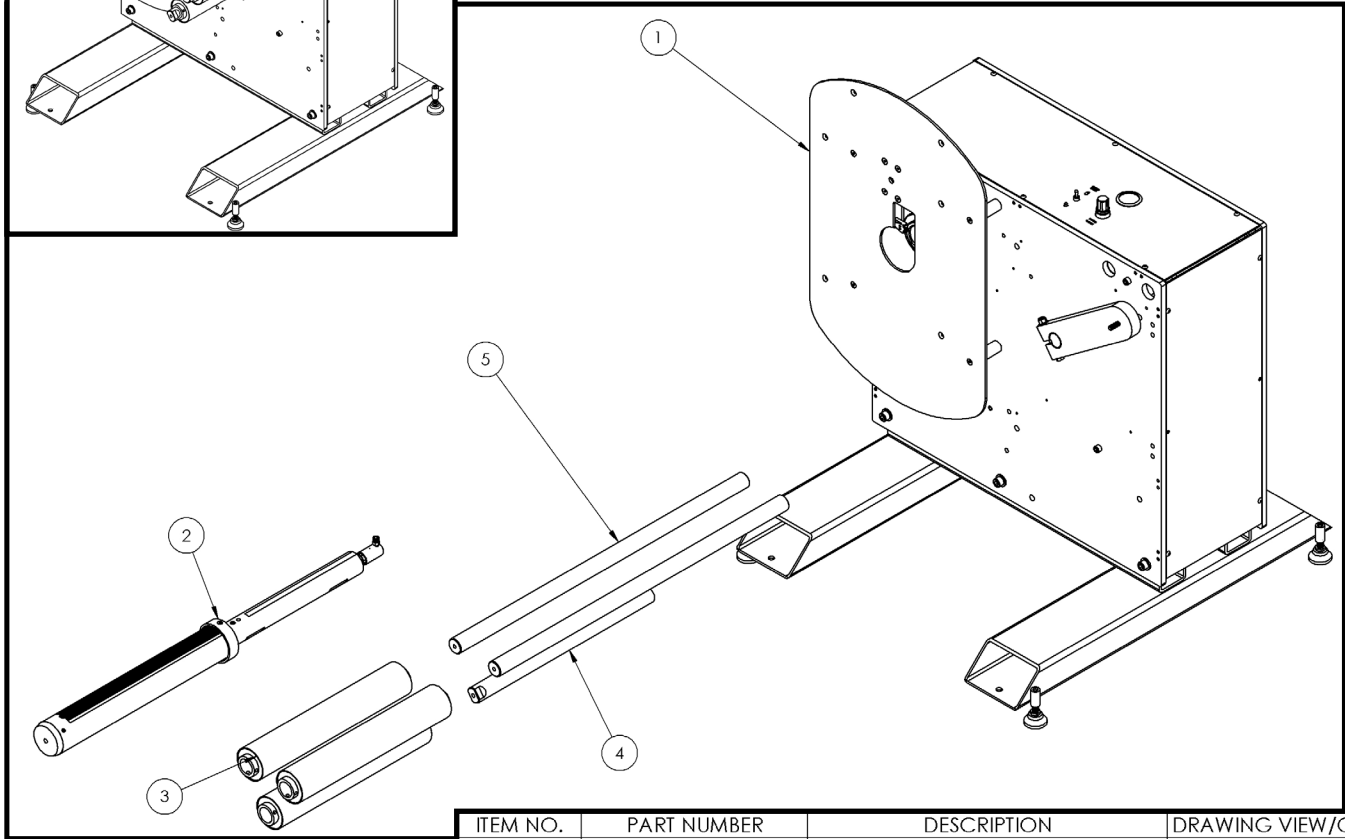
4:
Oper

5:
DWGs

6:
Warr.



UDB Base Assembly, L to R, 16\"/>



ITEM NO.	PART NUMBER	DESCRIPTION	DRAWING VIEW/QTY.
1	17450	UDB2, L TO R BASE 2011	1
2	12976	TRUE TURN ARBOR EXTRUSION ASSEMBLY, 16"	1
3	10592	IDLER ASSEMBLY, 1-3/8 BORE, 16"	3
4	11876	BSR IDLER SUPPORT SHAFT, DANCER, 16"	1
5	11875-B	IDLER SHAFT, 16", SERIES C	2

AZTECH CONVERTING SYSTEMS

UDB USER MANUAL

1:
Gen.
Info

2:
Install

3:
Setup

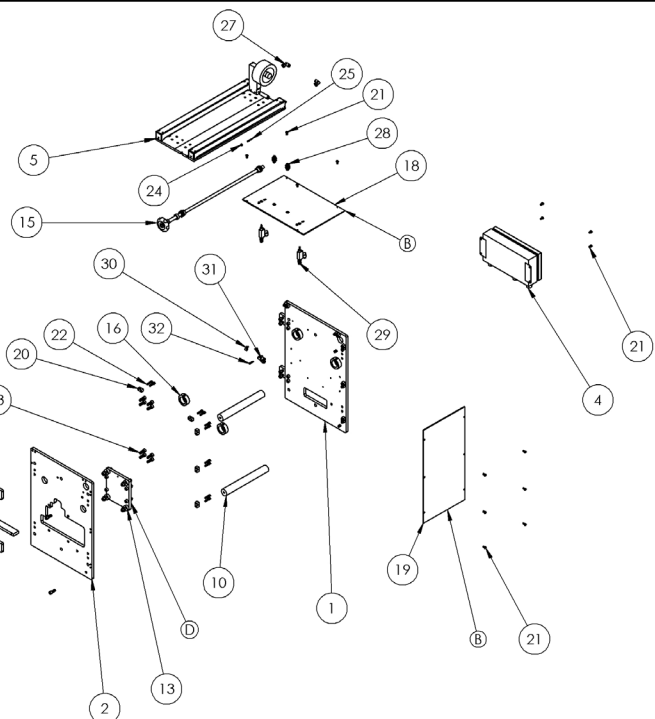
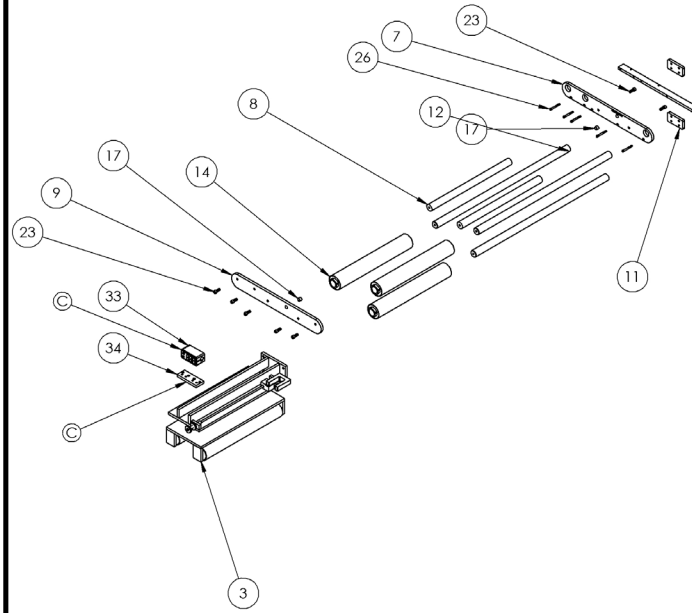
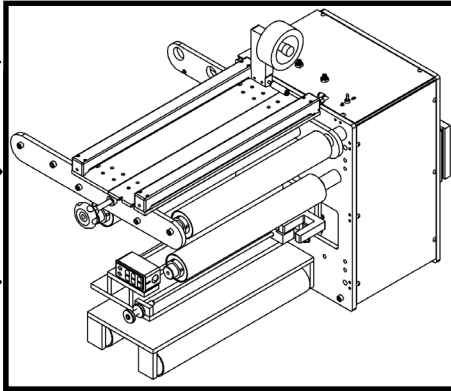
4:
Oper.

5:
DWGs

6:
Warr.



UDB Splice Table and Web Guide, L to R, 18" (AZT: 16291)



ITEM NO.	PART NUMBER	DESCRIPTION	Default/ QTY.
1	16271	UDB2 REAR SPRT SPLICE TABLE AND WEB GUIDE PLATE R TO L	1
2	16272	UDB2 FRONT SPRT SPLICE TABLE AND WEB GUIDE PLATE R TO L	1
3	WEB GUIDE 18 IN NARROW R TO L ASSEMBLY	18" WEB GUIDE RIGHT TO LEFT	1
4	WEB GUIDE CONTROL BOX WITH CONNECTORS	ACCUWEB GUIDE CONTROL BOX WITH CONNECTORE	1
5	15500	SPLICE TABLE ASSEMBLY 18"	1
6	15942	UDB2 SLICE TABLE ALINMENT AND SPACER PLATE	1
7	15935	UDB2 REAR SLICE TABLE SPRT BAR	1
8	15623	REWIND DIE CUTTER SPLICE TABLE STANDOFF 18"	2
9	15934	UDB2 FRONT SLICE TABLE SPRT BAR	1
10	10523	STANDOFF, FRAME, TOP, BASE UNIT	2
11	12070	BSR, DUAL ARBOR LINEUP PLATE	4
12	12788	IDLER SHAFT, 18", SERIES C	3
13	14384	SERIES C, WEB GUIDE SPRT PLATE	1
14	12061	IDLER ASSEMBLY, 1-3/8 BORE, 18"	3
15	15624	REWIND DIE CUTTER SPLICE TABLE PINION SHAFT ASSEMBLY 18"	1
16	1-3 EIGHTS COLLAR	1-3/8 SET COLLARS	4
17	1-2 ID X 5.8 OD X 1.2 LONG	SAE 841 Bronze Sleeve	2
18	16270	UDB2 4013 WEB GUIDE AND SPLICE TABLE TOP COVER	1
19	16099	UDB2 NIP DRIVE SIDE COVER	1
20	15894	MOUNT BLOCK 1/2 X 1/2 X 1 1/4-20 THREAD, TWO .257 HOLES THRU	10
21	BTNHD ~250-20 UNC 0-5 SIMP SCHL ~250-20 UNC 1 SIMP	BUTTON HEAD CAP SCREW 1/4-20 X 1 1/2"	14
22	SCHL ~375-16 UNC 1 SIMP	SOCKET HEAD CAP SCREW 1/4-20 X 1"	20
23	SCHL ~375-16 UNC 1 SIMP	SOCKET HEAD CAP SCREW 3/8-16 X 1"	27
24	HEX NUT 1/4-32 UNC 0 SIMP	8-32 NUT	2
25	SSCR HEX CUP ~164-32 UNC 1 SIMP	SOCKET HEAD CAP SCREW 8-32 X 1"	2
26	SCHL ~250-20 UNC 2-25 SIMP	SOCKET HEAD CAP SCREW 1/4-20 X 2-1/4"	5
27	KQ2LF07-34	1/4 COMP TO 1/8 FEPT 90 DEGREE	2
28	1.8 BULK HEAD FITTING ASSEMBLY	1/8 BULK HEAD FITTING ONE TOUCH	2
29	MJTV-3 ASSEMBLY	3 WAY 1/8 PORT TOGGLE VALVE	2
30	1.4 CORD CLAMP WITH BOLT	1/4 cord clamp with 8-32 x 1/2 button head cap screw	1
31	KQ2U07-00	NAME	1
32	BTNHD ~164-32 UNC 1 SIMP	BUTTON HEAD CAP SCREW GRADE 8, 8-32 X 1"	1
33	C-9183	Remote Control Panel	1
34	17478	UDB2 4018 WEB GUIDE, PANEL MOUNT PLATE	1



1:
Gen.
Info

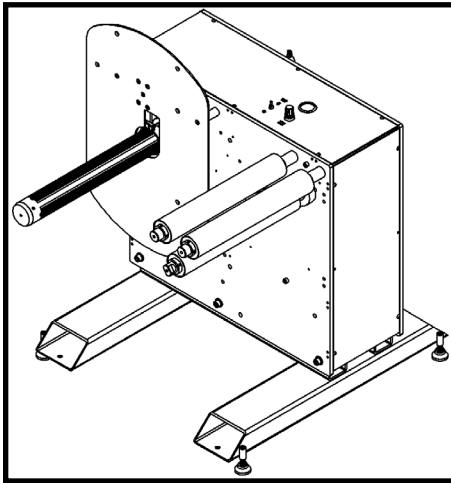
2:
Install

3:
Setup

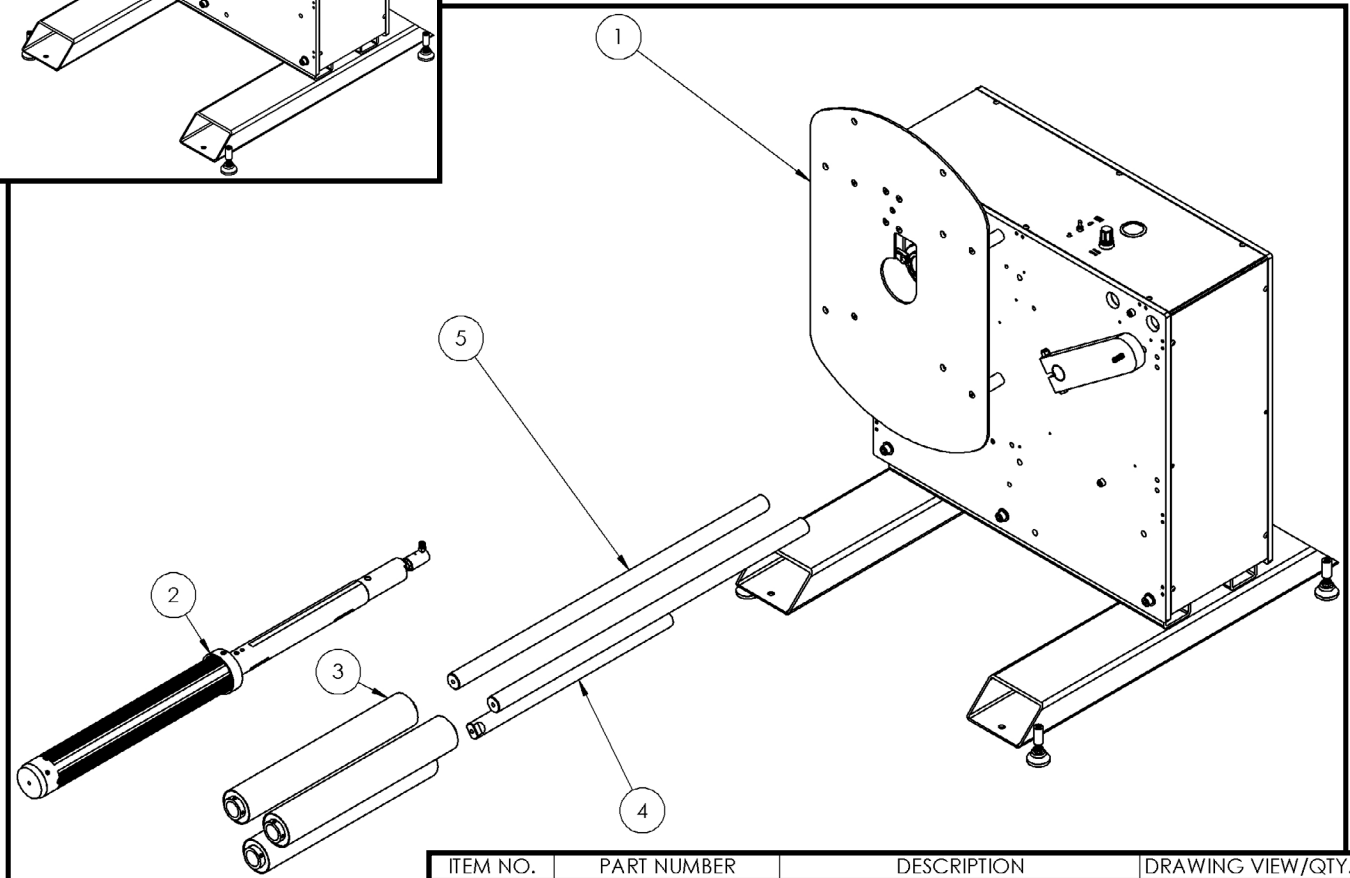
4:
Oper

5:
DWGs

6:
Warr.



UDB Base Assembly, L to R, 18\"/>



ITEM NO.	PART NUMBER	DESCRIPTION	DRAWING VIEW/QTY.
1	17450	UDB2, L TO R BASE 2011	1
2	13731	TRUE TURN ARBOR EXTRUSION ASSEMBLY, 18"	1
3	12061	IDLER ASSEMBLY, 1-3/8 BORE, 18"	3
4	12805	IDLER SUPPORT SHAFT, DANCER, 18"	1
5	12788	IDLER SHAFT, 18", SERIES C	2

1:
Gen.
Info

2:
Install

3:
Setup

4:
Oper.

5:
DWGs

6:
Warr.

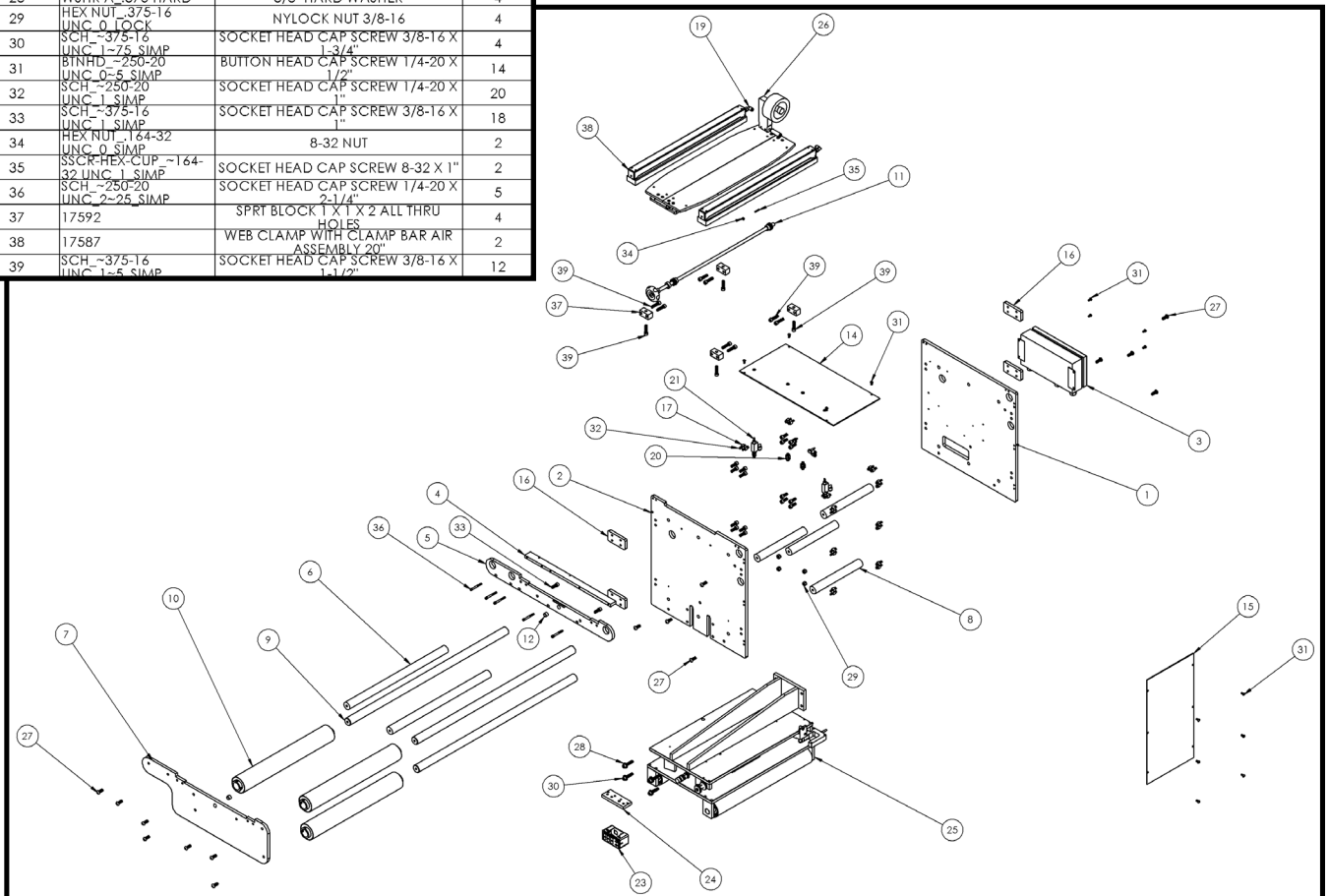
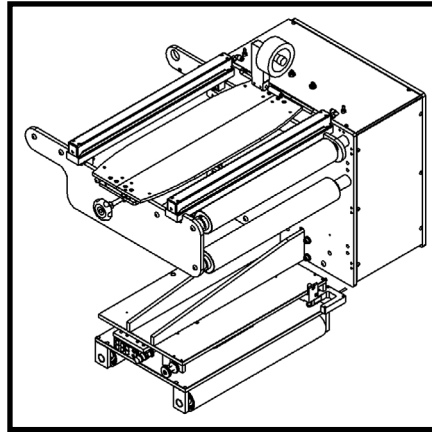


AZTECH CONVERTING SYSTEMS

UDB USER MANUAL

ITEM NO.	PART NUMBER	DESCRIPTION	Default/ QTY.
1	17533	UDB2 REAR SPRT SPLICE TABLE AND WEB GUIDE PLATE R TO L 20"	1
2	17534	UDB2 FRONT SPRT SPLICE TABLE AND WEB GUIDE PLATE R TO L 20"	1
3	17533	WEB GUIDE CONTROL BOX WITH CONNECTORS	1
4	15942	UDB2 SLICE TABLE ALIGNMENT AND SPACER PLATE	1
5	17542	UDB2 REAR SLICE TABLE SPRT BAR	1
6	17276	REWIND DIE CUTTER SPLICE TABLE STANDOFF 20"	2
7	17539	UDB2 FRONT SLICE TABLE SPRT BAR L TO R 20"	1
8	10523	STANDOFF, FRAME, TOP, BASE UNIT	4
9	15905	IDLER SHAFT, 20", SERIES C	3
10	12147	IDLER ASSEMBLY, 1-3/8 BORE, 20"	3
11	16632	SPLICE TABLE PINION SHAFT ASSEMBLY 20"	1
12	1-2 ID X 5.8 OD X 1.2 L O.NC	SAE 841 Bronze Sleeve	2
13	BTNHD -164-32 UNC, 1 SIMP	BUTTON HEAD CAP SCREW GRADE 5, 8-32 X 1"	1
14	17535	UDB2 4013, WEB GUIDE AND SPLICE TABLE TOP COVER 20"	1
15	16099	UDB2, NIP DRIVE SIDE COVER	1
16	12070	BSR, DUAL ARBOR LINEUP PLATE	4
17	15894	MOUNT BLOCK 1/2 X 1/2 X 1 1/4-20 THREAD, TWO .257 HOLES THRU	10
18	KQ2U07-00	NAME	1
19	KQ2LF07-34	1/4 COMP TO 1/8 FEPT 90 DEGREE	2
20	1-8 BULK HEAD FITTING ASSEMBLY	1/8 BULK HEAD FITTING ONE TOUCH	2
21	MUTV-3 ASSEMBLY	3 WAY 1/8 PORT TOGGLE VALVE	2
22	1-4 CORD CLAMP WITH BOLT	1/4 cord clamp with 8-32 x 1/2 button head cap screw	1
23	C-9183	Remote Control Panel	1
24	17478	UDB2 4018, WEB GUIDE, PANEL MOUNT PLATE	1
25	WEB GUIDE L TO R-20	20" LEFT TO RIGHT WEB GUIDE	1
26	17557	SPLICE TABLE STRAIGHT ANGLED COMBO ASSEMBLY, 20"	1
27	BTNHD -375-16 UNC, 1 SIMP	BUTTON HEAD CAP SCREW 3/8-16 X 1"	15
28	WSHR A .375 HARD	3/8" HARD WASHER	4
29	HEX NUT .375-16 UNC, 0 LOCK	NYLOCK NUT 3/8-16	4
30	SCH .375-16 UNC, 1-25 SIMP	SOCKET HEAD CAP SCREW 3/8-16 X 1-3/4"	4
31	BTNHD -250-20 UNC, 0-5 SIMP	BUTTON HEAD CAP SCREW 1/4-20 X 1 1/2"	14
32	SCH .250-20 UNC, 1 SIMP	SOCKET HEAD CAP SCREW 1/4-20 X 1"	20
33	SCH .375-16 UNC, 1 SIMP	SOCKET HEAD CAP SCREW 3/8-16 X 1"	18
34	HEX NUT .164-32 UNC, 0 SIMP	8-32 NUT	2
35	SSCR-HEX-CUP -164-32 UNC, 1 SIMP	SOCKET HEAD CAP SCREW 8-32 X 1"	2
36	SCH .250-20 UNC, 2-25 SIMP	SOCKET HEAD CAP SCREW 1/4-20 X 2-1/4"	5
37	17592	SPRT BLOCK 1 X 1 X 2 ALL THRU HOLES	4
38	17587	WEB CLAMP WITH CLAMP BAR AIR ASSEMBLY 20"	2
39	SCH .375-16 UNC, 1-5 SIMP	SOCKET HEAD CAP SCREW 3/8-16 X 1-1/2"	12

UDB Splice Table and Web Guide, L to R, 20" (AZT: 17523)



AZTECH CONVERTING SYSTEMS

UDB USER MANUAL



1:
Gen.
Info

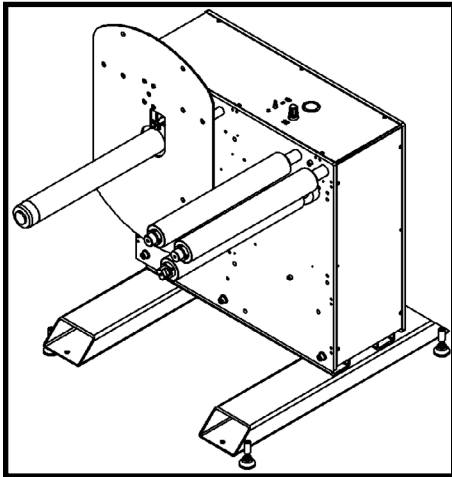
2:
Install

3:
Setup

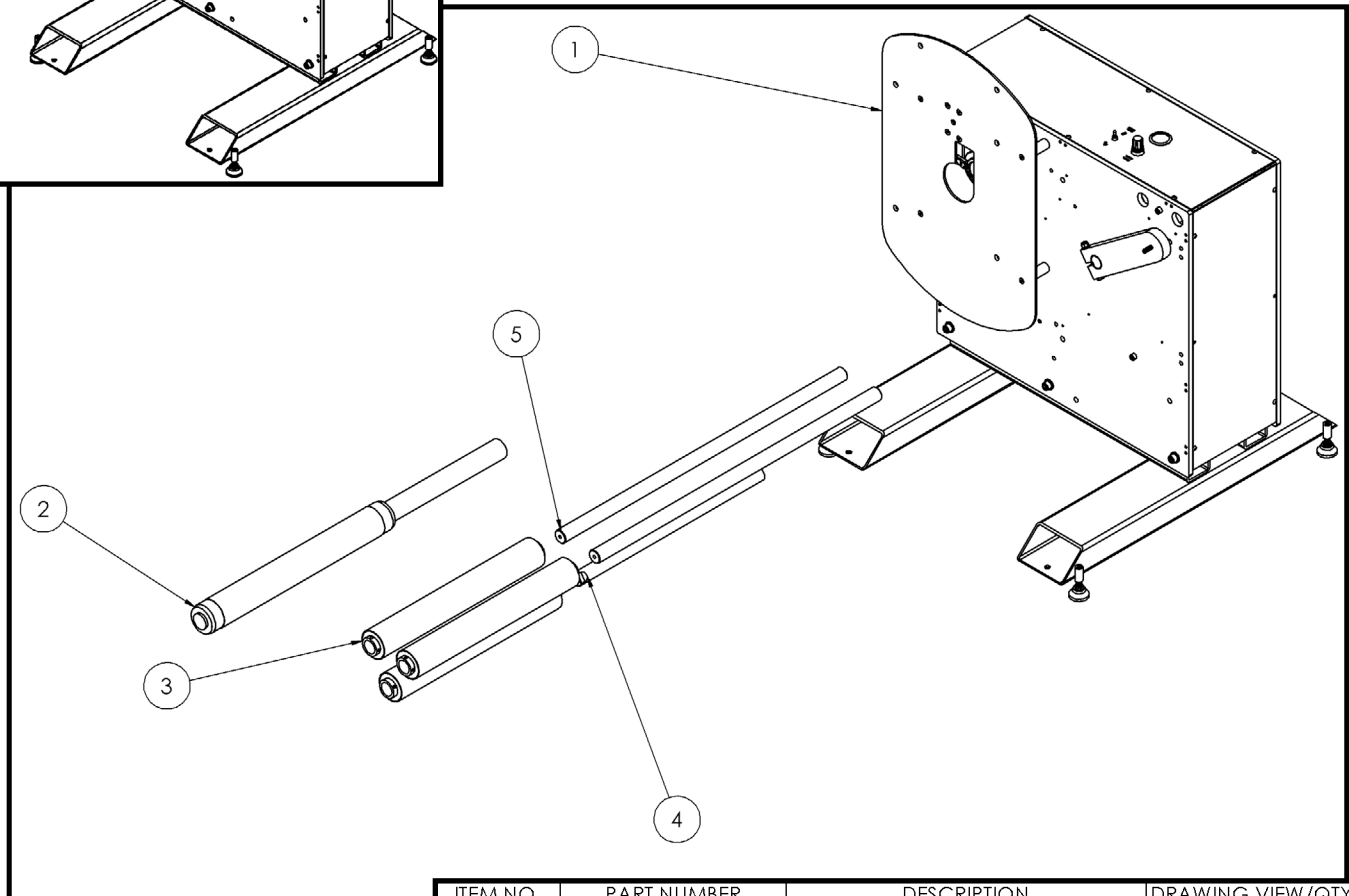
4:
Oper

5:
DWGs

6:
Warr.



UDB Base Assembly, L to R, 20" (AZT: 17522)



ITEM NO.	PART NUMBER	DESCRIPTION	DRAWING VIEW/QTY.
1	17450	UDB2, L TO R BASE 2011	1
2	20614	CONVERTECH 21" EXPANSION, 15" SPRT SHAFT, ONE PIECE	1
3	12147	IDLER ASSEMBLY, 1-3/8 BORE, 20"	3
4	15908	BSR IDLER SUPPORT SHAFT, DANCER, 20"	1
5	15905	IDLER SHAFT, 20", SERIES C	2



Section 6: Warranties and Service

6-1: Warranties & Provisions

WARRANTIES

All equipment manufactured and sold by AZTECH Converting Systems (Seller) is warranted to be free of defective materials and workmanship under normal use and service for a period of one (1) year from the date of delivery to Buyer's premises. All commercial components not manufactured by Seller carry the original manufacturer's warranty. At Seller's discretion, Seller may provide on-site warranty service for a period of ninety (90) days from the aforementioned date.

REMEDIES

If within the Warranty Period any such Equipment is proven to Seller's satisfaction to be defective in either material or workmanship, Seller, at its sole discretion, shall (a) repair or replace defective parts on the Equipment at Seller's cost, or (b) grant a reasonable allowance on account of such a breach. If within the Warranty Period the Seller receives notice from Buyer of defects in parts or materials. Seller will ship (ground, prepaid) replacement parts and invoice Buyer for the full cost of the replacement parts). Buyer will receive a Return Authorization (RA) from seller, and return defective parts or materials to Seller,

who at its sole discretion shall determine whether defective parts or materials are or are not subject to exclusion from this warranty as provided herein. Any defective parts or material not excluded from the Warranty Period will then be fully credited to Buyer.

EXCLUSIONS

THE FOLLOWING ITEMS ARE EXCLUDED FROM THIS WARRANTY.

- Defects or damage caused by careless or improper use.
- Parts that need periodic replacement from wear during normal operation.
- Routine maintenance and adjustment.
- Failure or damage caused by improper installation or inadequate maintenance by Buyer.
- Failure or damage caused by equipment modifications by Buyer.
- Equipment damage resulting from an accident, or abnormal conditions of operation.

DISCLAIMER

NO OTHER WARRANTY IS EXPRESSED OR IMPLIED INCLUDING WARRANTIES OF MERCHANTABILITY AND FITNESS FOR ANY PARTICULAR PURPOSE. SELLER IS NOT LIABLE FOR INCIDENTAL OR CONSEQUENTIAL DAMAGE SUCH AS, BUT

NOT LIMITED TO LOSS IN PROFITS, LOSS OF USE OF EQUIPMENT, OR INCREASED IN OPERATING COSTS OR EXPENSES.

6-2: Technical Service

In the event that your MH-1500 is not functioning properly or if you have any technical questions, an AZTECH Technical Service representative is available to assist you. Contact information is as follows:

Phone: 1-800-829-8351

Fax: 1-480-998-5409

E-Mail: techservice@aztech-converting.com