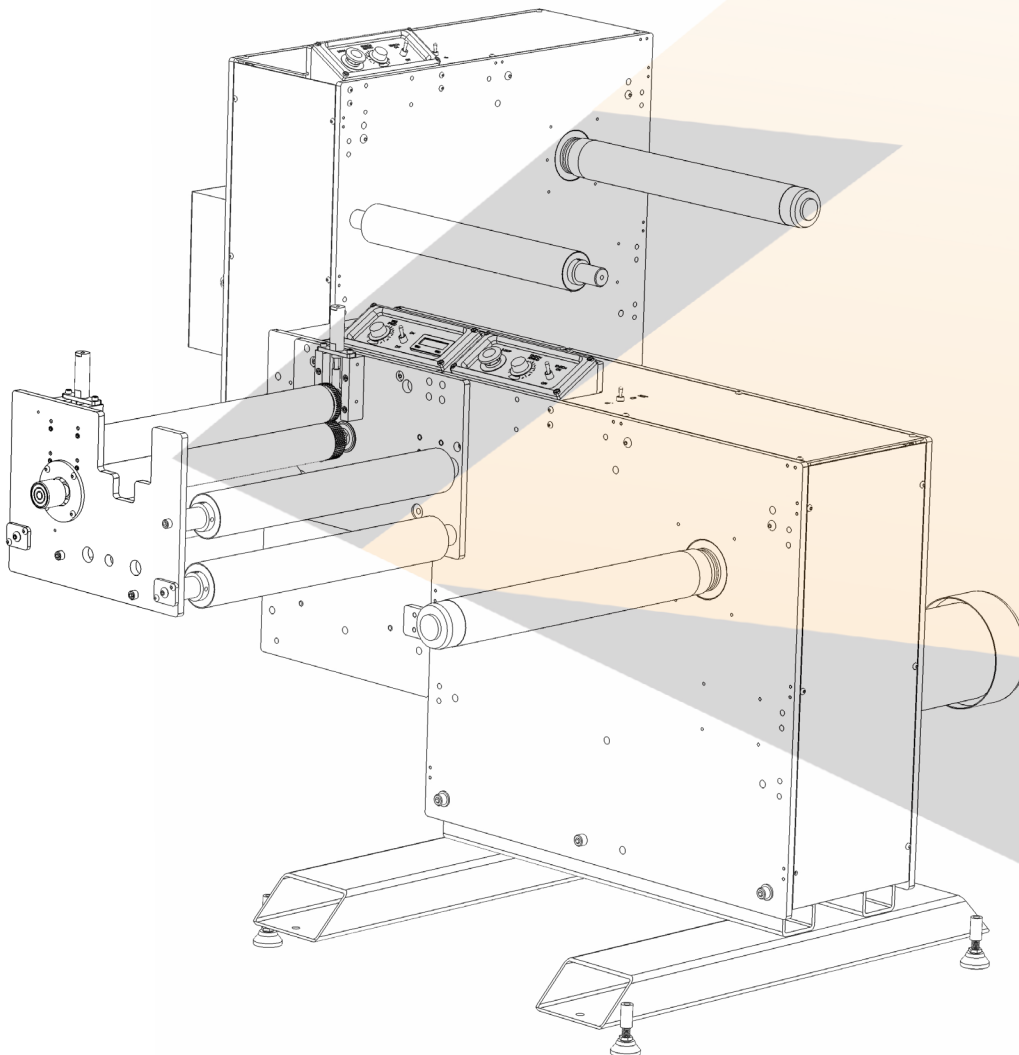




**AZTECH CONVERTING SYSTEMS**  
212 W Lodge Drive  
TEMPE, AZ 85283  
PHONE (480) 951-8351  
FAX (480) 998-5409  
[www.aztechconverting.com](http://www.aztechconverting.com)

# RW Series User Manual





# **AZTECH CONVERTING SYSTEMS**

**RW Series  
USER MANUAL**

---

## **TABLE OF CONTENTS**

<b>SECTION 1: GENERAL INFORMATION</b>	<b>1-2</b>
<b>SECTION 2: MACHINE INSTALLATION</b>	<b>3</b>
<b>SECTION 3: MACHINE SETUP</b>	<b>4</b>
<b>SECTION 4: MACHINE OPERATION</b>	<b>5-6</b>
<b>SECTION 5: MACHINE DRAWINGS</b>	<b>7-27</b>
<b>SECTION 6: WARRENTY</b>	<b>28</b>



## Section 1: General Information

### 1-1 Introduction

The AzTech DCRW ReWinder Series of large diameter rewind stands is available in 10 inch (25.4 cm), 13 inch (33.02 cm), 16 inch (40.64 cm), 18 inch (45.72 cm) and 20 inch (50.8 cm) widths, and available in either web direction. The ReWinder is designed to be highly productive, versatile, and simple to operate and maintain. Before operating your new ReWinder, fully read and understand all facets of this manual. Following the procedures outlined in this manual will help assure maximum performance. Keeping your machine properly set-up and maintained will assure years of productive and satisfactory service.

### 1-2 Machine Information and Specifications

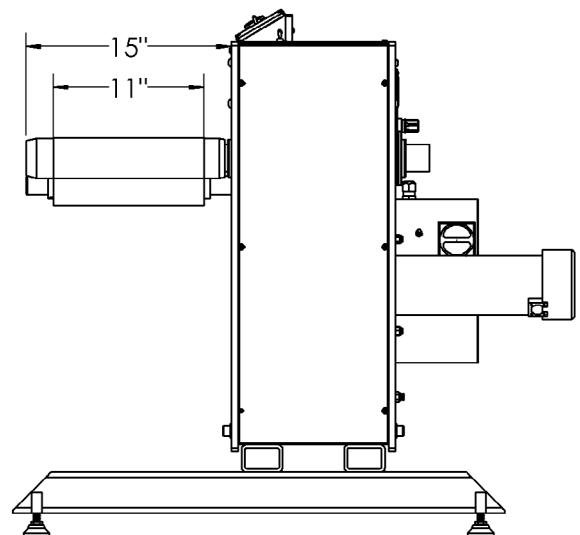
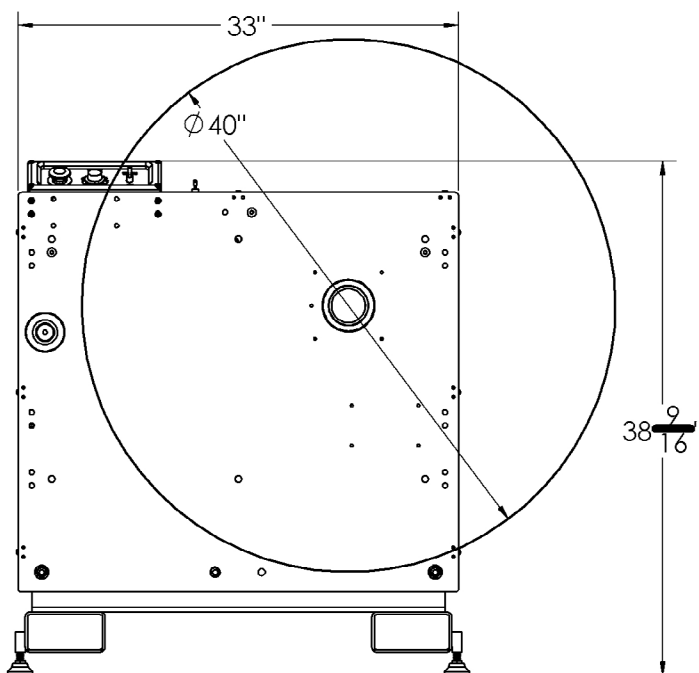
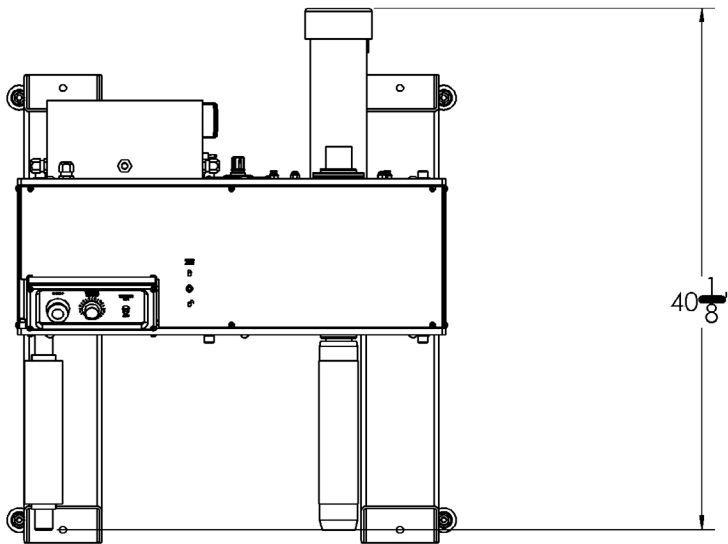
#### Rewind Stand Without Nip

**Rewind Motor:** 1HP  
(2HP AVAILABLE)

**Electrical Req.:** 15 A  
220 VAC

**Air Req.:** 90PSI

**Rewind Capacity:** 40in



10" Model Shown

1:  
Gen.  
Info

2:  
Install

3:  
Setup

4:  
Oper.

5:  
DWGs

6:  
Warr.



# AZTECH CONVERTING SYSTEMS

## RW Series USER MANUAL

### Rewind Stand With Nip

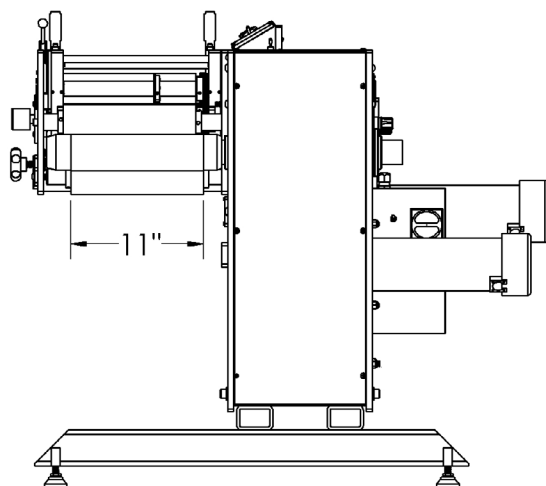
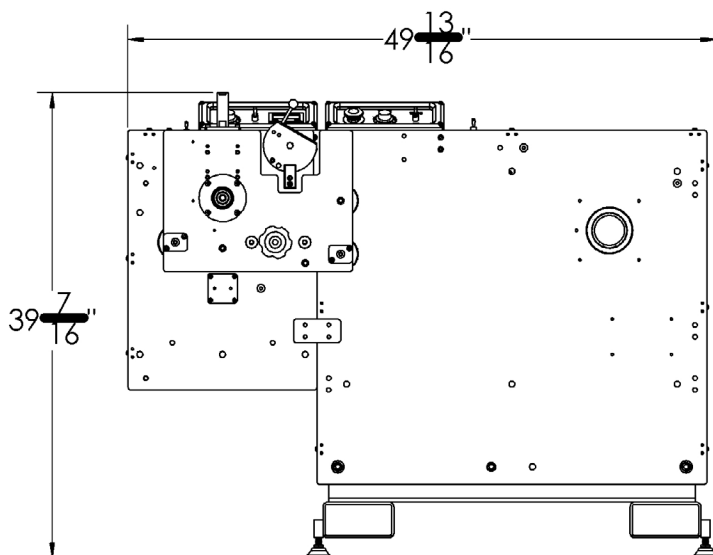
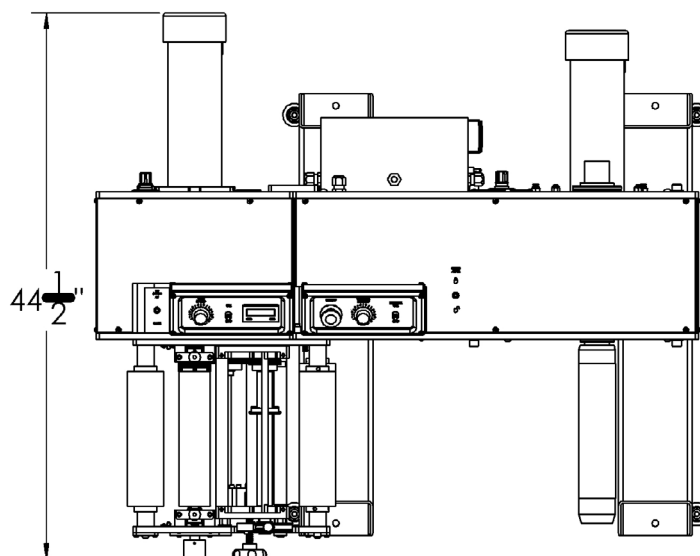
**Rewind Motor:** 1HP  
(2HP AVAILABLE)

**Nip Motor:** 1HP  
(2HP AVAILABLE)

**Electrical Req.:** 25 A  
220 VAC

**Air Req.:** 90PSI

**Rewind Capacity:** 40in



10" Model Shown

### 1-3 Care and Maintenance

The ReWinder requires very little maintenance. Use care when cleaning rubber nip roller to prevent surface damage. Never use sharp objects when cleaning roller. Listen for air leaks and tighten or replace fittings as needed.

### 1-4 Safety

The ReWinder is designed to operate at high rates of speed, employing rollers and other moving parts. Operators must keep their hands clear of the machine when it is in operation. Making all operators aware of potential safety hazards will help minimize any chances of operator injury.



## Section 2: Machine Installation

### 2-1 Preparation

It is important that your DCRW ReWinder be situated on solid and level ground. Make sure that site allows for access to machine from all 4 sides. If the machine is placed on unstable or un-level ground, it may tip over risking damage or serious personal injury.

### 2-2 Uncrating Machine

To avoid damage to your new DCRW ReWinder, carefully remove the cover by removing all screws, then remove side panels to expose machine. Remove all 4 lag bolts which hold the machine to the base. Remove and inspect all boxes and parts inside crate.

### 2-3 Removal and Positioning

It is critical that the DCRW ReWinder is removed and handled being supported under the base of the machine and should never be lifted using rollers for support.

### 2-4 Pneumatic Connections

Although your DCRW ReWinder has been thoroughly tested before shipment, connections on occasion may loosen during shipment. Visually inspect all pneumatic to assure that each is fitted securely. Connect air line to the machine's main air connection, and listen for any air leaks that may exist.

### 2-5 Testing Before Operation

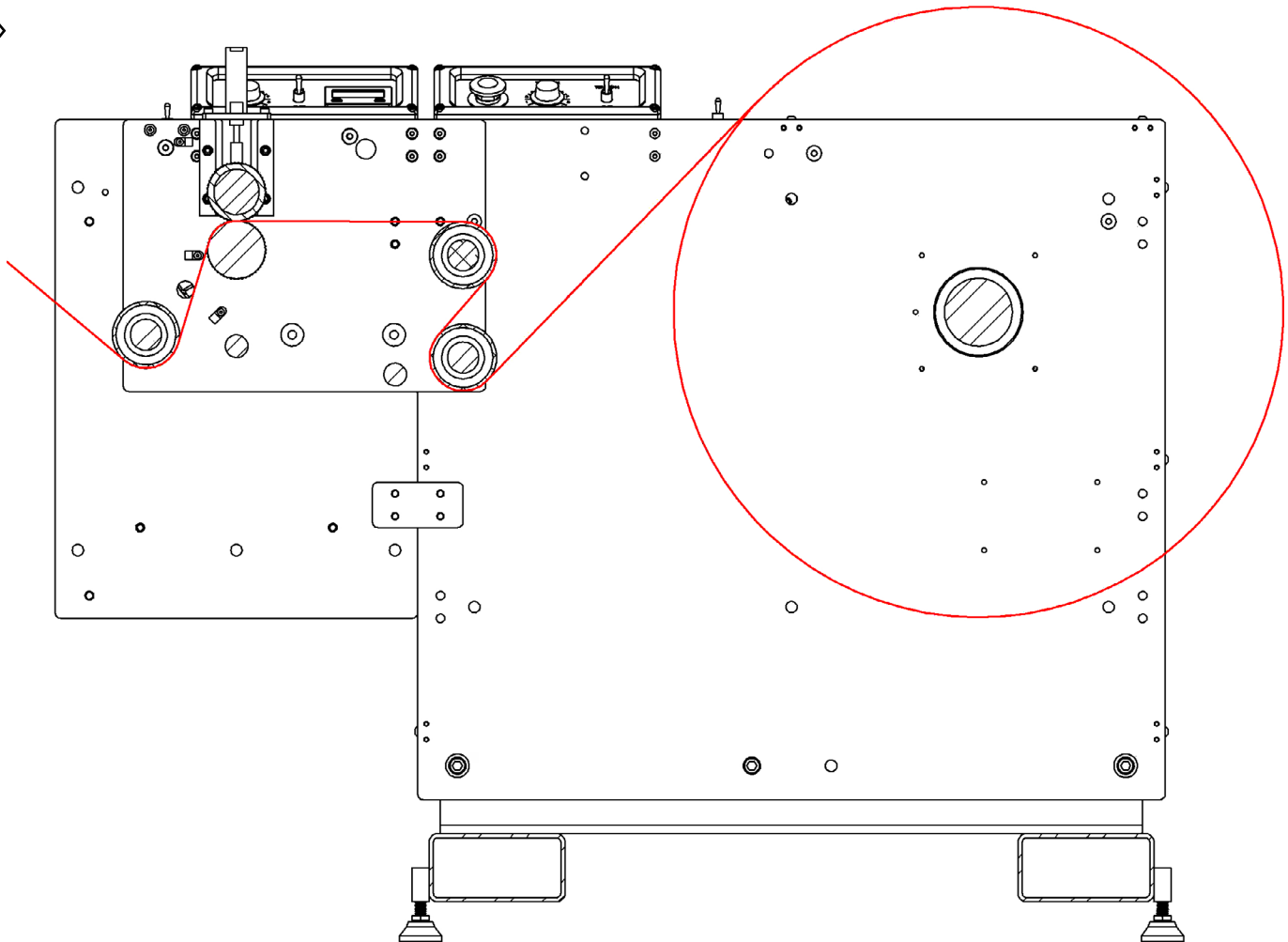
Make sure the area around your machine is clear of any objects which may impair the machine. Also inspect and make sure all rollers and spindles are free and clear of any objects which may impede operation, and risk machine damage. Before threading your machine, accelerate and decelerate your machine through a full range of speeds, and make sure acceleration is smooth and free of any unnatural sounds or movements.



## Section 3: Machine Setup

### 3-1 Webbing the Machine

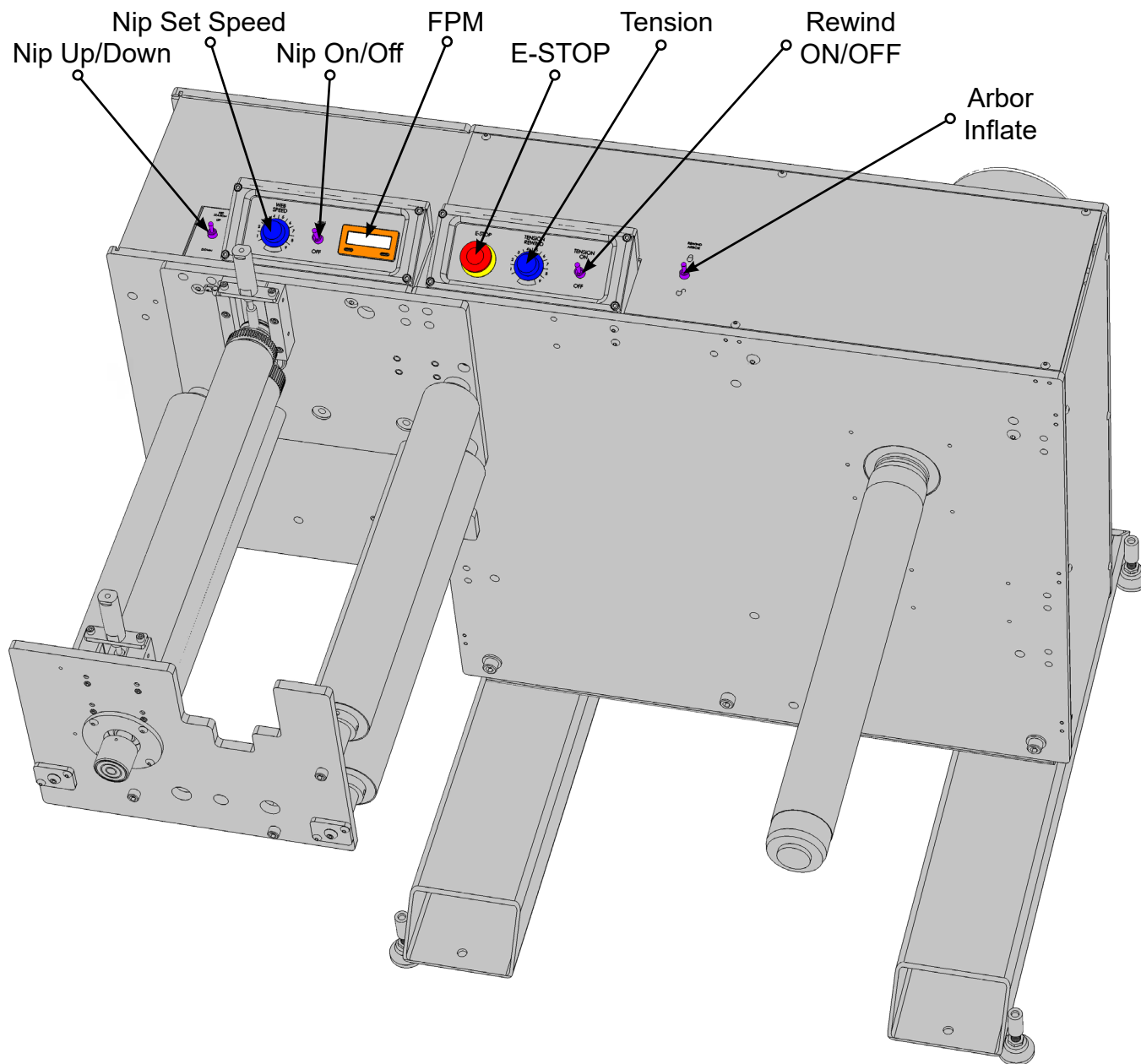
Proper webbing of your ReWinder is vital to optimal machine performance. The web path below illustrates the proper way to thread your machine. Any improper webbing of the machine may cause tension problems that will impede operation.





- 1: Gen. Info
- 2: Install
- 3: Setup
- 4: Oper.
- 5: DWGs
- 6: Warr.

## Section 4: Machine Operation



4-1 Rewind Station Controls, Shown with optional Nip Assembly

# AZTECH CONVERTING SYSTEMS

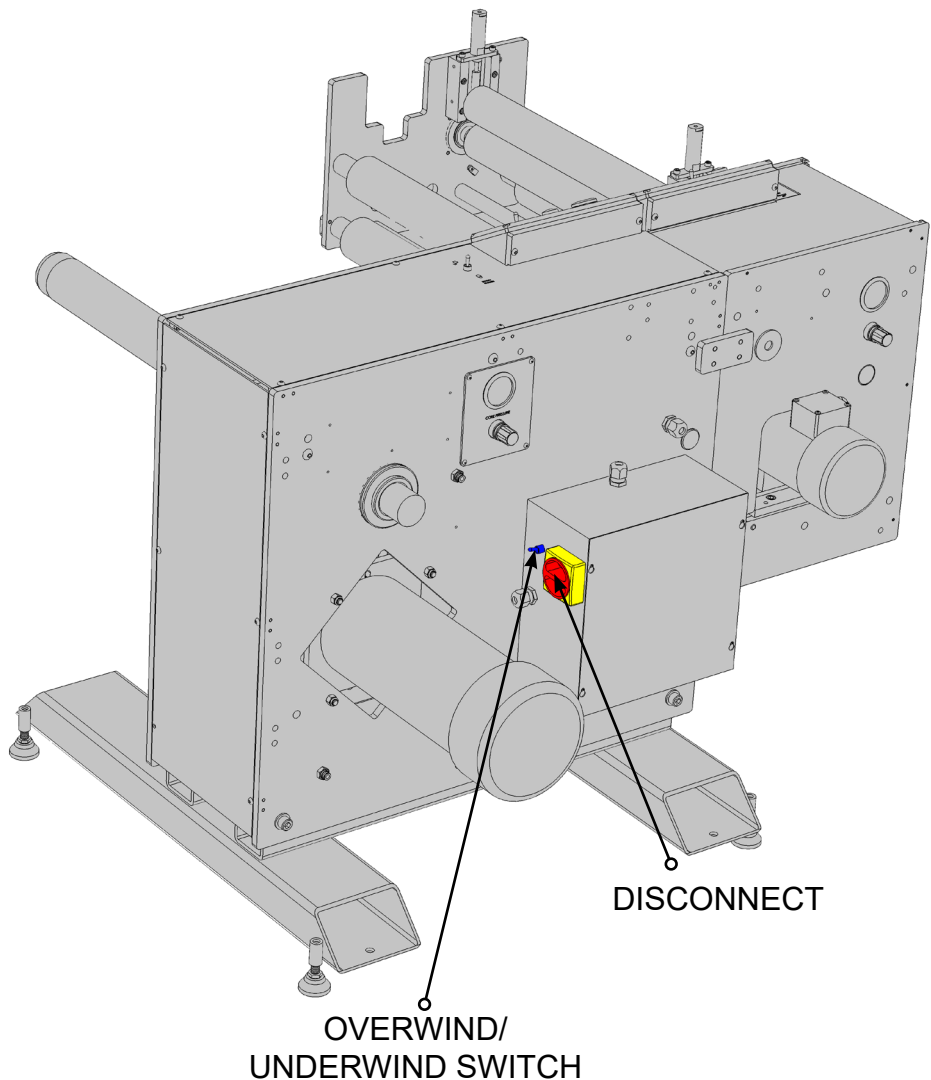
## RW Series USER MANUAL

### 4-2 Machine Operation

Turn ON/OFF switch to “ON” position to begin machine operation. Web speed is controlled using the Dancer tension knob on the top of the machine. To increase web speed increase dancer pressure by turning the knob clockwise, and to decrease web speed decrease Dancer pressure by turning the knob counter-clockwise. To stop machine operation, turn ON/OFF switch to off position or press E-stop button.

### 4-3 Overwinding/Underwinding

You may over or underwind material with the ReWinder by using the switch on back electrical panel.



**CAUTION:** Keep hands and loose clothing away from nip roll to avoid the chance of personal injury.

### 4-4 Parts Replacement & Adjustment

Over time parts may wear and require adjustment or replacement. If inside of machine requires service, you must disconnect power before removing top panels. With top panels removed service may be performed.





1:  
Gen.  
Info

2:  
Install

3:  
Setup

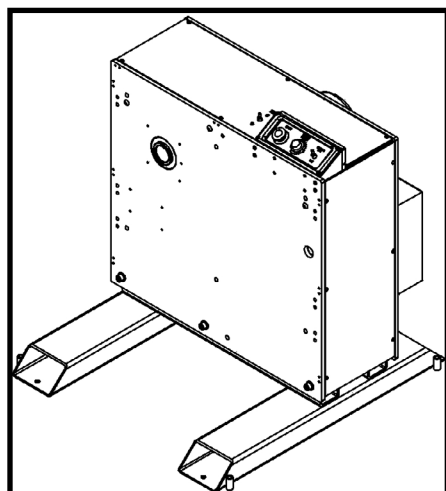
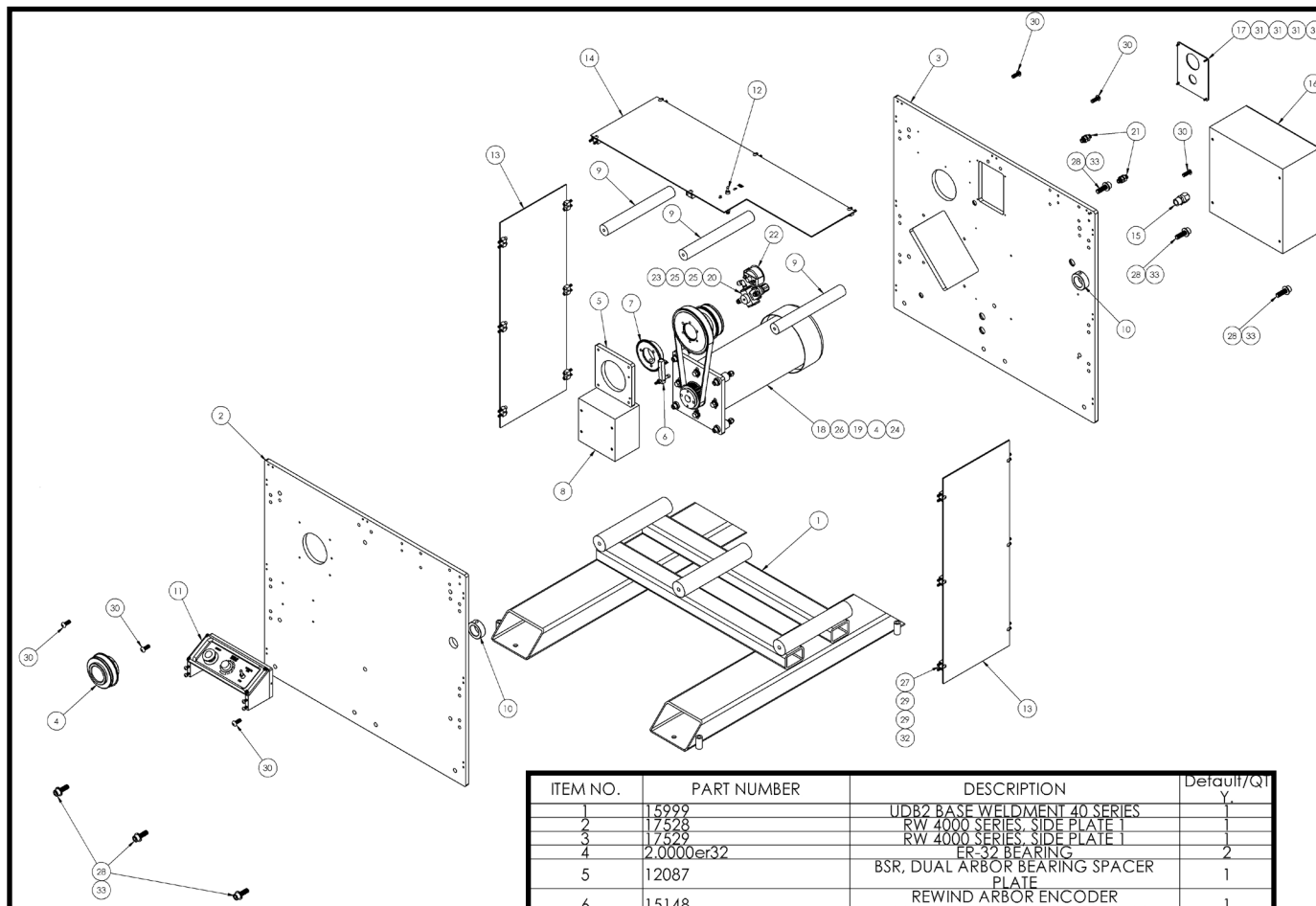
4:  
Oper

5:  
DWGs

6:  
Warr.

## Section 5: Machine Drawings

### Rewind Base Assembly, Right to Left (AZT: 18160)



ITEM NO.	PART NUMBER	DESCRIPTION	Default/QTY
1	15999	UDB2 BASE WELDMENT 40 SERIES	1
2	17528	RW 4000 SERIES SIDE PLATE 1	1
3	17529	RW 4000 SERIES SIDE PLATE 1	1
4	2.0000er32	ER 32 BEARING	2
5	12087	BSR, DUAL ARBOR BEARING SPACER PLATE	1
6	15148	REWIND ARBOR ENCODER WHEEL SENSOR MOUNT ASSEMBLY	1
7	15139	REWIND ARBOR ENCODER WHEEL ASSEMBLY	1
8	6 X 6 X 4 SC BOX	STANDOFF FRAME, TOP, BASE UNIT	1
9	10523	1-3/8 SET COLLARS	3
10	16086	UDB2 REWIND CONTROL PANEL ASSEMBLY	2
11	MJTV-3 ASSEMBLY	3 WAY 1/8 PORT TOGGLE VALVE	1
12	17432	UDB2 SIDE COVER 2011	2
13	17530	UDB2 TOP COVER	1
14	1.2 STRAIN RELIEF ASSEMBLY	1/2" NON METALLIC LIQUID-TIGHT TYPW B CONNECTOR	1
15	12 X 12 SC BOX ASSEMBLY	12 BY 12 BY 6 SC BOX WITH COVER	1
16	16481	CORE PRESSURE PLATE	1
17	17289	2 HP, 1HP 180 VDC MOTOR MOUNT WITH PLATE ASSEMBLY	1
18	48L075	48L075 TIMING PULLEY	1
19	AR20K-N01-Z	REGULATOR, MODULAR, AR MASS PRO	1
20	BULK HEAD FITTING 1-4 TO 1-4 ONE TOUCH ASSEMBLY	1/4 TO 1/4 ONE TOUCH BLK HD FITTING	2
21	HEIPF20SUB0-100	GUAGE 2" U-CLAMP DRY, 1/4 NPT BRASS CBM	1
22	KQ2H07-019	1/4 TUBE TO 1/8 MPT SMC	1
23	SDS 2 INCH	REWIND ARBOR TIMING BUSHING 2"	1
24	SMC KQ2L07-34S	1/4 COMP TO 1/8 MPT 320L075	2
25	TIMING BELT FOR 17527	MOUNT BLOCK 1/2 X 1/2 X 1 1/4-20 THREAD, TWO .252 HOLES THRU SOCKET HEAD CAP SCREW 1/2-13 X 1-1/2"	1
26	15894	SOCKET HEAD CAP SCREW 1/4-20 X 1"	17
27	SCH ~500-13 UNC ~1-5 SIMP	BUTTON HEAD CAP SCREW 3/8-16 X 1"	6
28	SCH ~250-20 UNC ~1 SIMP	BUTTON HEAD CAP SCREW 8-32 X 1/2"	34
29	BTNHD ~375-16 UNC ~1 SIMP	BUTTON HEAD CAP SCREW 1/4-20 X 1/2"	6
30	BTNHD ~164-32 UNC ~0-5 SIMP	BUTTON HEAD CAP SCREW 1/4-20 X 1/2"	4
31	BTNHD ~250-20 UNC ~0-5 SIMP	HARD FLAT WASHER 1/2"	17
32	WSHR A ~500 HARD		6

1:  
Gen.  
Info

2:  
Install

3:  
Setup

4:  
Oper.

5:  
DWGs

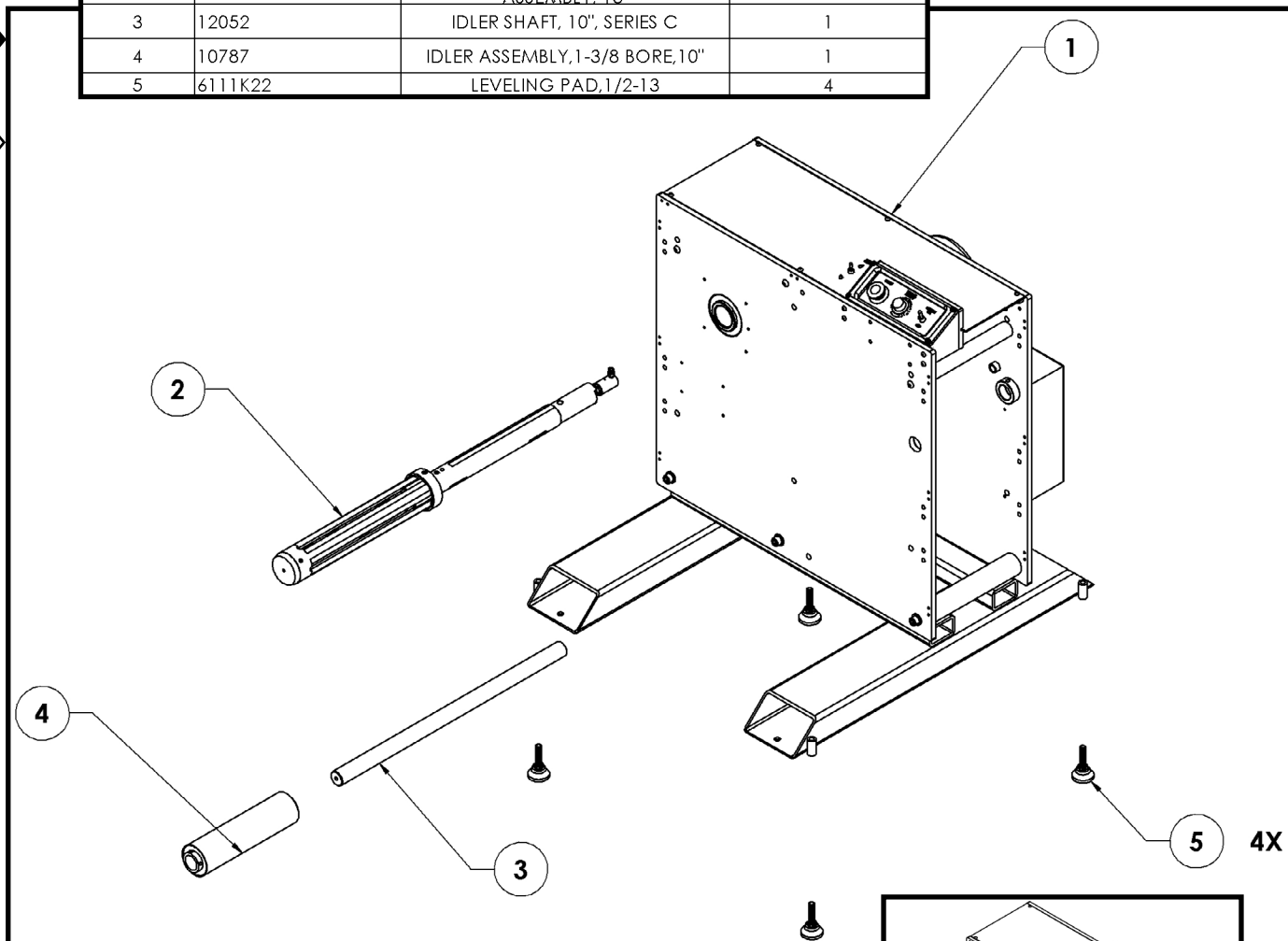
6:  
Warr.



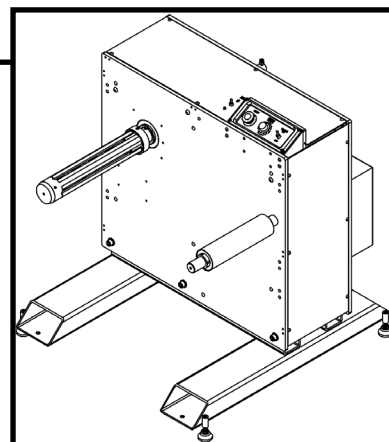
# AZTECH CONVERTING SYSTEMS

## RW Series USER MANUAL

ITEM NO.	PART NUMBER	DESCRIPTION	NIP STATION SETUP/QTY.
1	18160	RW 4000 SERIES, REWIND R TO L BASE ASSEMBLY	1
2	12444	TRUE TURN ARBOR EXTRUSION ASSEMBLY, 13"	1
3	12052	IDLER SHAFT, 10", SERIES C	1
4	10787	IDLER ASSEMBLY, 1-3/8 BORE, 10"	1
5	6111K22	LEVELING PAD, 1/2-13	4



**Standalone Rewind 10", Right to Left  
(AZT: 18161)**



# AZTECH CONVERTING SYSTEMS

## RW Series USER MANUAL



1:  
Gen.  
Info

2:  
Install

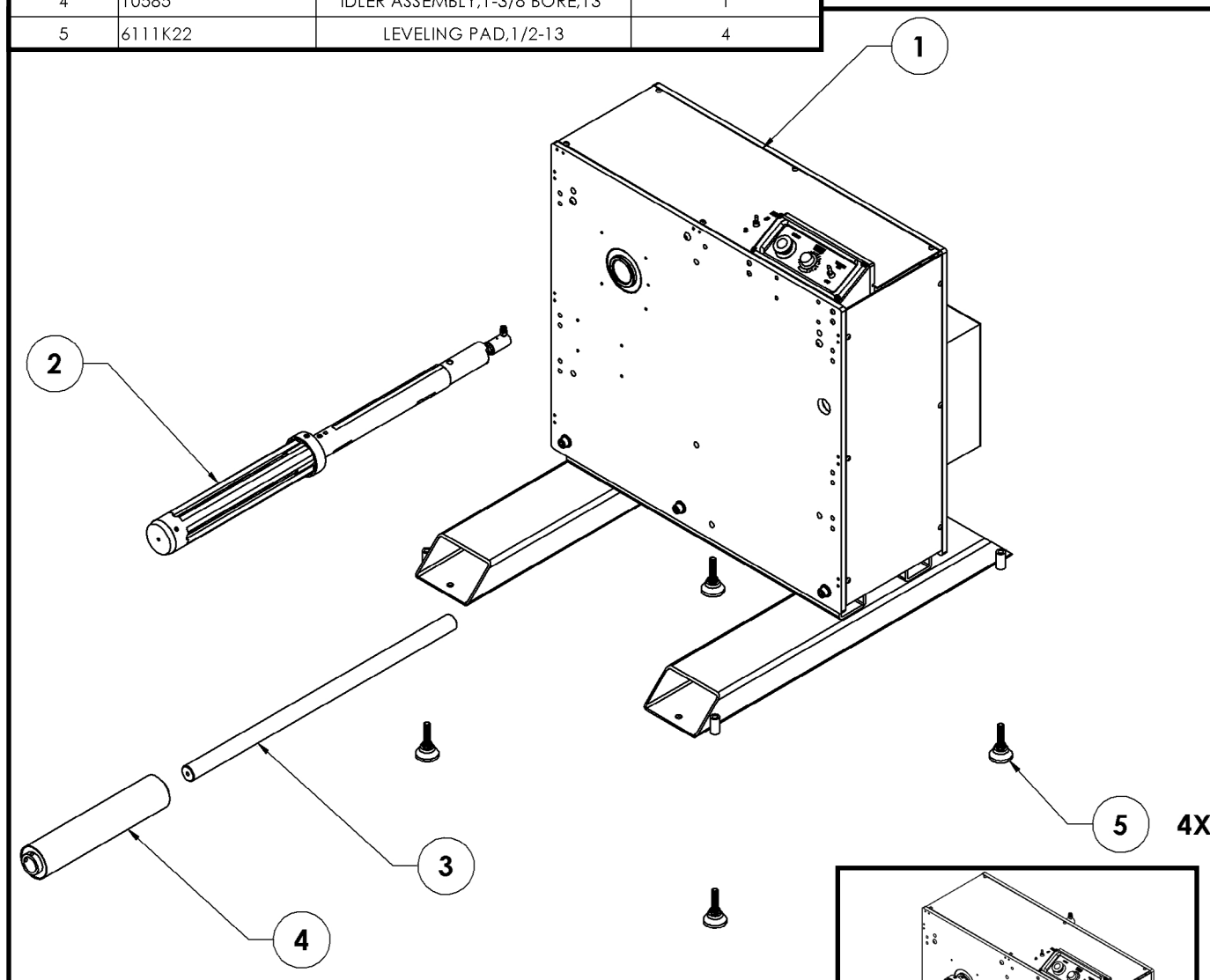
3:  
Setup

4:  
Oper

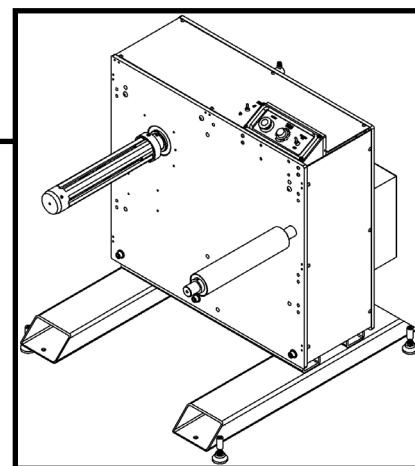
5:  
DWGs

6:  
Warr.

ITEM NO.	PART NUMBER	DESCRIPTION	STAND ALONE/QTY.
1	18160	RW 4000 SERIES, REWIND R TO L BASE ASSEMBLY	1
2	12444	TRUE TURN ARBOR EXTRUSION ASSEMBLY, 13"	1
3	11254	IDLER SHAFT, 13", SERIES C	1
4	10585	IDLER ASSEMBLY, 1-3/8 BORE, 13"	1
5	6111K22	LEVELING PAD, 1/2-13	4



**Standalone Rewind 13", Right to Left  
(AZT: 18162)**



1:  
Gen.  
Info

2:  
Install

3:  
Setup

4:  
Oper.

5:  
DWGs

6:  
Warr.

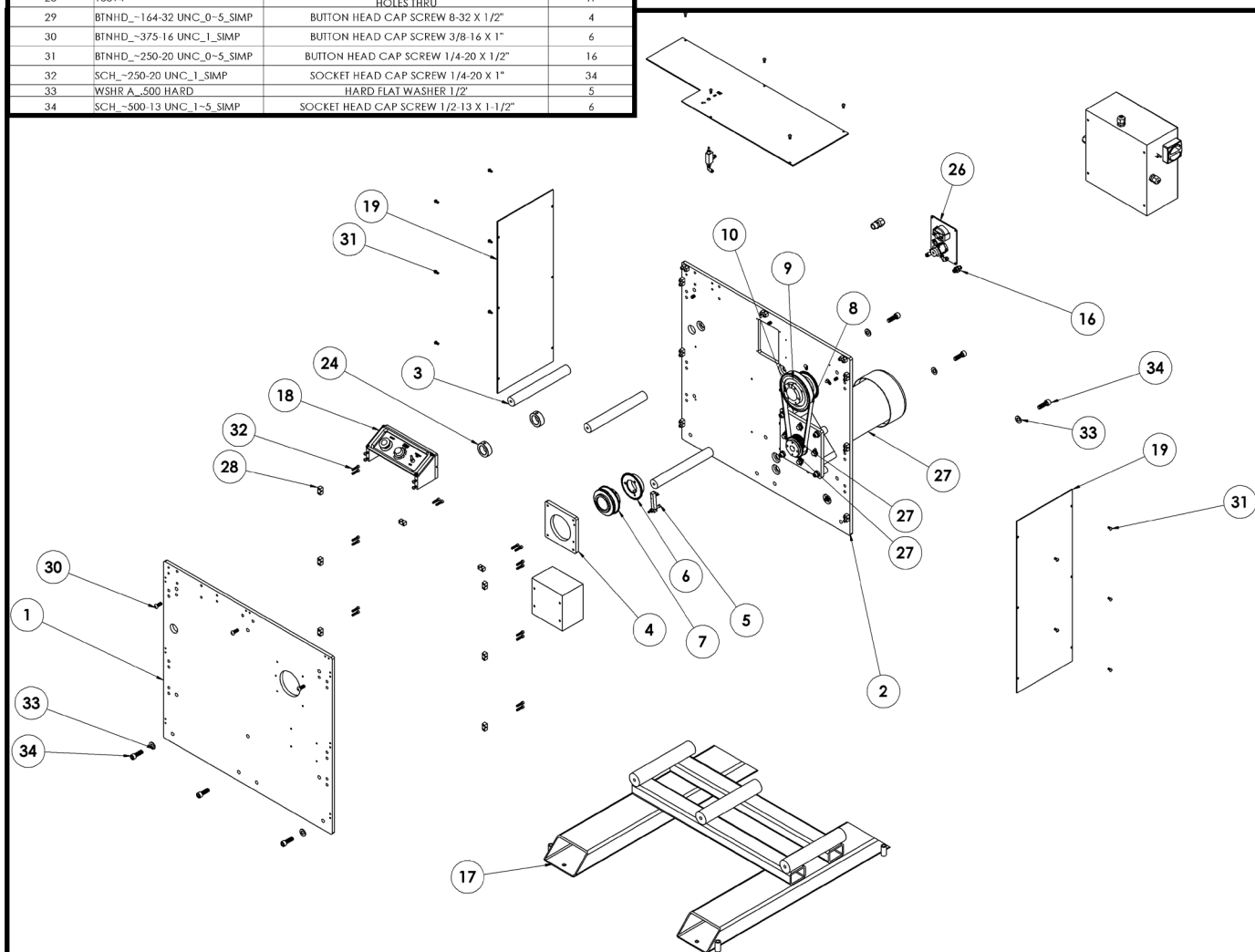
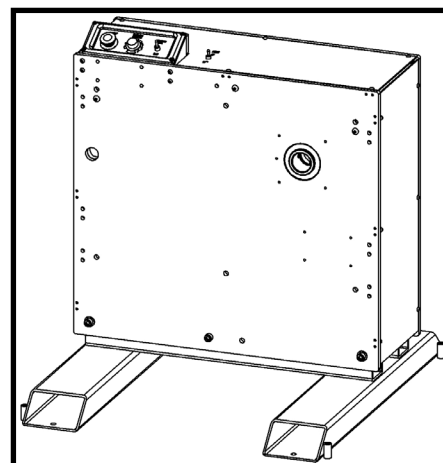


# AZTECH CONVERTING SYSTEMS

## RW Series USER MANUAL

### Rewind Station Base Assembly, Left to Right (AZT: 17527)

ITEM NO.	PART NUMBER	DESCRIPTION	Default/QTY.
1	17528	RW 4000 SERIES, SIDE PLATE 1	1
2	17529	RW 4000 SERIES, SIDE PLATE 1	1
3	10523	STANDOFF,FRAME, TOP, BASE UNIT	3
4	12087	BSR, DUAL ARBOR BEARING SPACER PLATE	1
5	15148	REWIND ARBOR ENCODER WHEEL,SENSOR MOUNT ASSEMBLY	1
6	15139	REWIND ARBOR ENCODER WHEEL, ASSEMBLY	1
7	2.0000er32	ER-32 BEARING	2
8	TIMING BELT FOR 17527	320L075	1
9	48L075	48L075 TIMING PULLEY	1
10	SDS 2 INCH	REWIND ARBOR TIMING BUSHING 2"	1
11	MJTV-3 ASSEMBLY	3 WAY 1/8 PORT TOGGLE VALVE	1
12	KQ2H07-019	1/4 TUBE TO 1/8 MPT SMC	1
13	HEIPF20SUB0-100	GUAGE 2" U-CLAMP DRY, 1/4 NPT BRASS CBM	1
14	AR20K-N01-Z	REGULATOR, MODULAR, AR MASS PRO	1
15	SMC KQ2L07-345	1/4 COMP TO 1/8 MPT	2
16	BULK HEAD FITTING 1-4 TO 1-4 ONE TOUCH ASSEMBLY	1/4 TO 1/4 ONE TOUCH BLK HD FITTING	2
17	15999	UDB2 BASE WELDMENT 40 SERIES	1
18	16086	UDB2 REWIND CONTROL PANEL ASSEMBLY	1
19	17432	UDB2 SIDE COVER 2011	2
20	17530	UDB2 TOP COVER	1
21	1_4 CORD CLAMP WITH BOLT	1/4 cord clamp with 8-32 x 1/2 button head cap screw	4
22	6 X 6 X 4 SC BOX		1
23	21026	RW40XX ELECTRICAL ENCLOSURE	1
24	1-3EIGHTS COLLAR	1-3/8 SET COLLARS	2
25	1_2 STRAIN RELIEF ASSEMBLY	1/2" NON METALLIC LIQUID-TIGHT TYPW B CONNECTOR	1
26	16481	CORE PRESSURE PLATE	1
27	17289	2 HP, 1HP 180 VDC MOTOR MOUNT WITH PLATE ASSEMBLY	1
28	15894	MOUNT BLOCK 1/2 X 1/2 X 1 1/4-20 THREAD, TWO .257 HOLES THRU	17
29	BTNHD_-164-32 UNC_0-5_SIMP	BUTTON HEAD CAP SCREW 8-32 X 1 1/2"	4
30	BTNHD_-375-16 UNC_1_SIMP	BUTTON HEAD CAP SCREW 3/8-16 X 1"	6
31	BTNHD_-250-20 UNC_0-5_SIMP	BUTTON HEAD CAP SCREW 1/4-20 X 1 1/2"	16
32	SCH_-250-20 UNC_1_SIMP	SOCKET HEAD CAP SCREW 1/4-20 X 1"	34
33	WSHR_A_500 HARD	HARD FLAT WASHER 1/2"	5
34	SCH_-500-13 UNC_1-5_SIMP	SOCKET HEAD CAP SCREW 1/2-13 X 1-1/2"	6



# AZTECH CONVERTING SYSTEMS

## RW Seires USER MANUAL



1:  
Gen.  
Info

2:  
Install

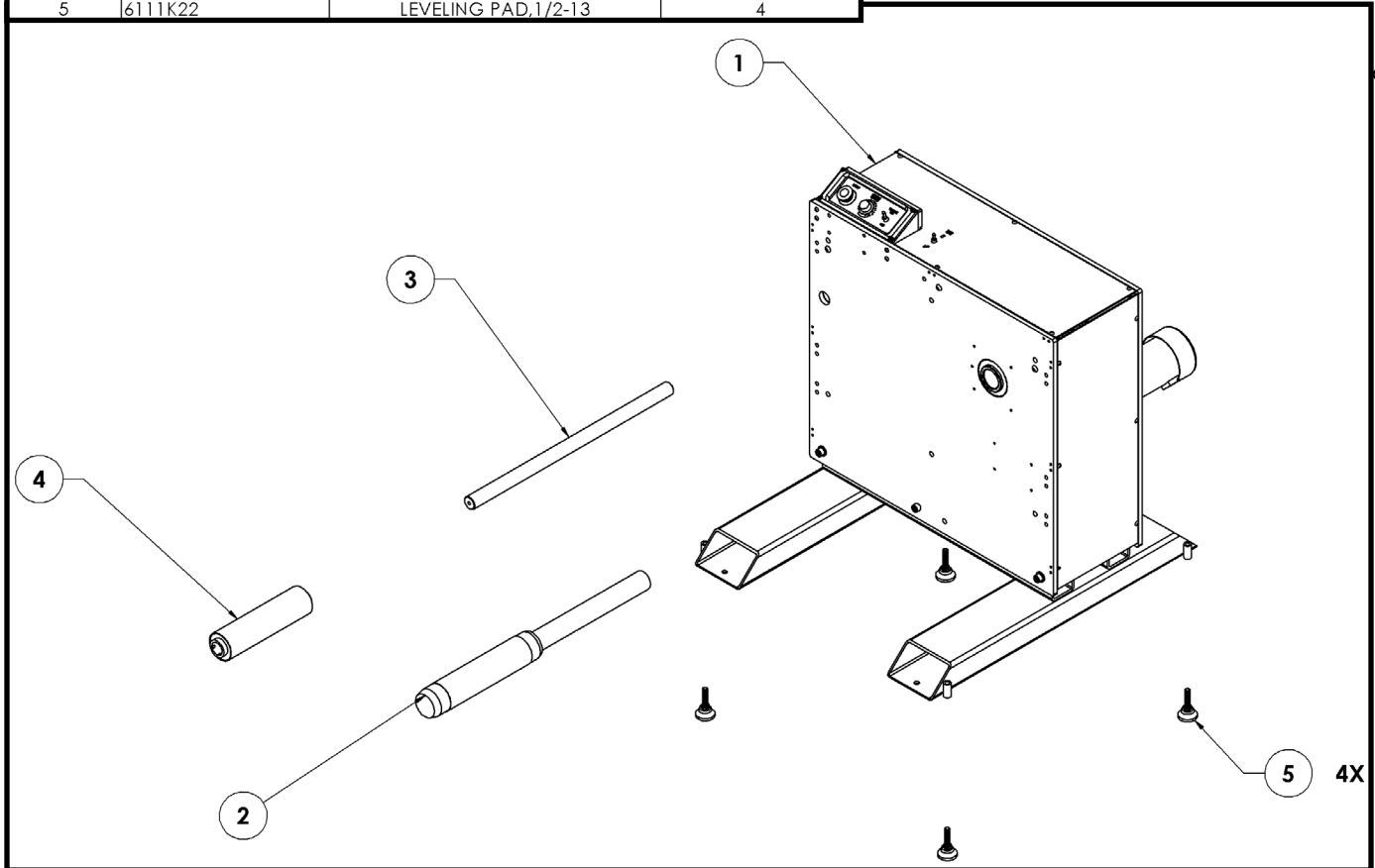
3:  
Setup

4:  
Oper

5:  
DWGs

6:  
Warr.

ITEM NO.	PART NUMBER	DESCRIPTION	STAND ALONE/QTY.
1	17527	RW 4000 SERIES, REWIND L TO R BASE ASSEMBLY	1
2	18384	ONE PIECE 3" ARBOR 10" WEB WITH 2" DIA 15" SPRT SHAFT	1
3	12052	IDLER SHAFT, 10", SERIES C	1
4	10787	IDLER ASSEMBLY, 1-3/8 BORE, 10"	1
5	6111K22	LEVELING PAD, 1/2-13	4



**Standalone Rewind 10", Left to Right  
(AZT: 18134)**

1:  
Gen.  
Info

2:  
Install

3:  
Setup

4:  
Oper.

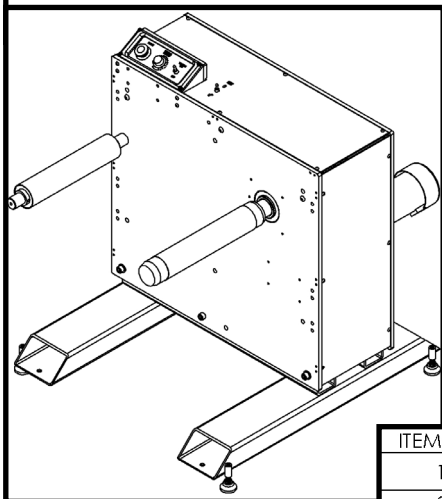
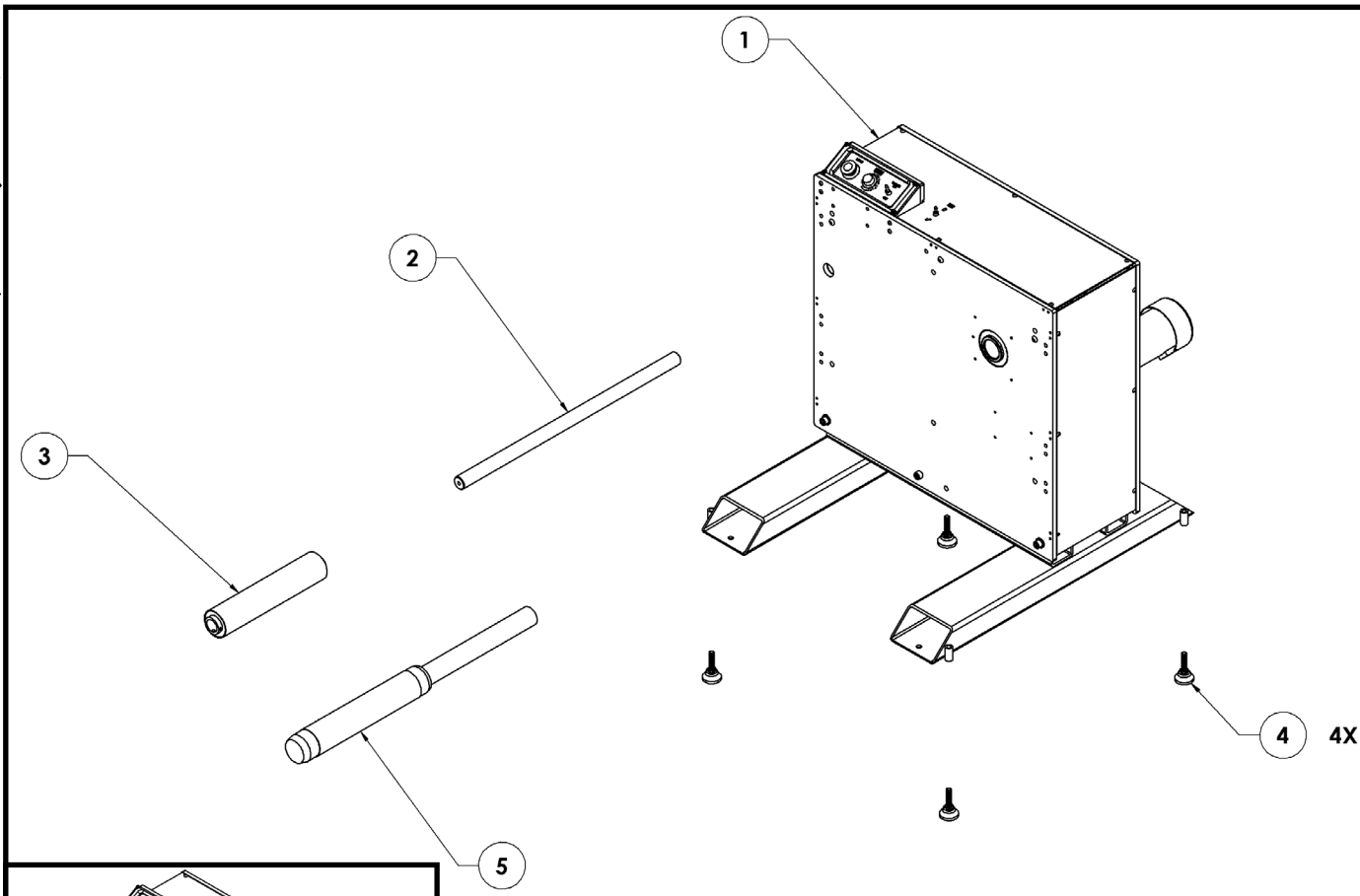
5:  
DWGs

6:  
Warr.



# AZTECH CONVERTING SYSTEMS

## RW Series USER MANUAL



**Standalone Rewind 13", Left to Right  
(AZT: 18133)**

ITEM NO.	PART NUMBER	DESCRIPTION	STAND ALONE/QTY.
1	17527	RW 4000 SERIES, REWIND L TO R BASE ASSEMBLY	1
2	11254	IDLER SHAFT, 13", SERIES C	1
3	10585	IDLER ASSEMBLY, 1-3/8 BORE, 13"	1
4	6111K22	LEVELING PAD, 1/2-13	4
5	21531	CONVERTECH THRU SHAFT ASSY, 13" x 3" DIA	1

# AZTECH CONVERTING SYSTEMS

## RW Series USER MANUAL



1:  
Gen.  
Info

2:  
Install

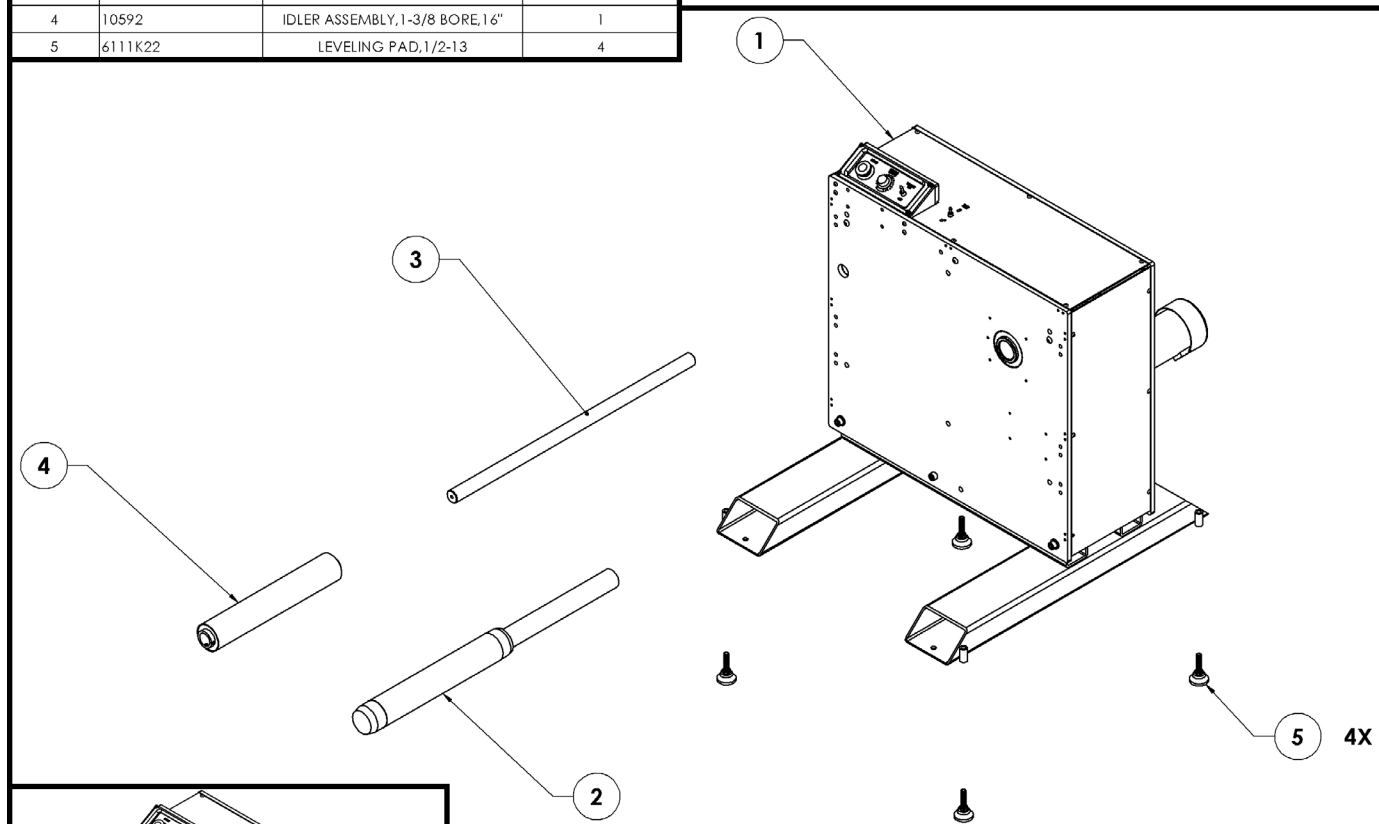
3:  
Setup

4:  
Oper

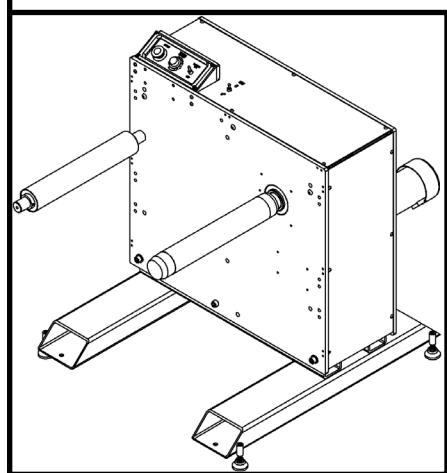
5:  
DWGs

6:  
Warr.

ITEM NO.	PART NUMBER	DESCRIPTION	STAND ALONE/QTY.
1	17527	RW 4000 SERIES, REWIND L TO R BASE ASSEMBLY	1
2	20174	ONE PIECE 3" ARBOR 16" WEB WITH 2" DIA 15" SPRT SHAFT	1
3	11875	IDLER SHAFT, 16", SERIES C	1
4	10592	IDLER ASSEMBLY, 1-3/8 BORE, 16"	1
5	6111K22	LEVELING PAD, 1/2-13	4



**Standalone Rewind 16", Left to Right  
(AZT: 18131)**



1:  
Gen.  
Info

2:  
Install

3:  
Setup

4:  
Oper.

5:  
DWGs

6:  
Warr.

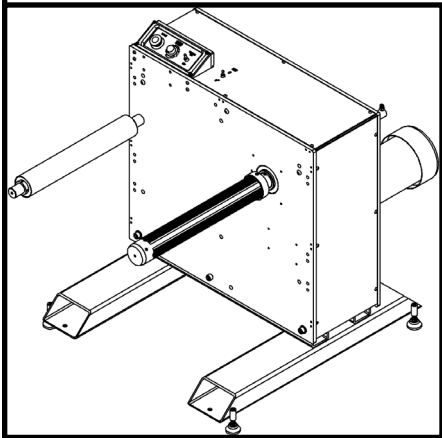
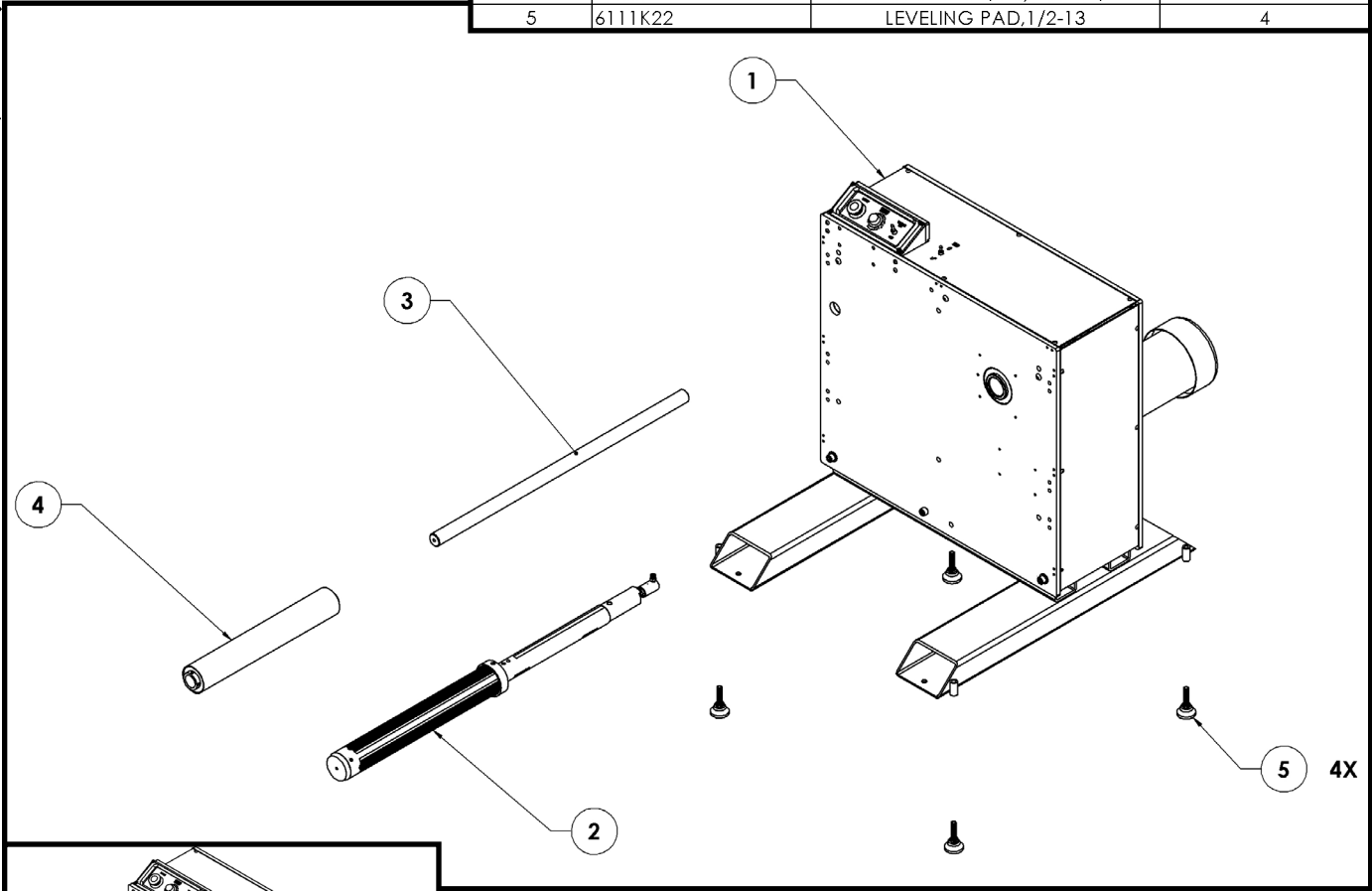


# AZTECH CONVERTING SYSTEMS

## RW Series

### USER MANUAL

ITEM NO.	PART NUMBER	DESCRIPTION	STAND ALONE/QTY.
1	17527	RW 4000 SERIES, REWIND L TO R BASE ASSEMBLY	1
2	13731	TRUE TURN ARBOR EXTRUSION ASSEMBLY, 18"	1
3	12788	IDLER SHAFT, 18", SERIES C	1
4	12061	IDLER ASSEMBLY, 1-3/8 BORE, 18"	1
5	6111K22	LEVELING PAD, 1/2-13	4



**Standalone Rewind 18", Left to Right  
(AZT: 18128)**



# AZTECH CONVERTING SYSTEMS

## RW Series USER MANUAL



1:  
Gen.  
Info

2:  
Install

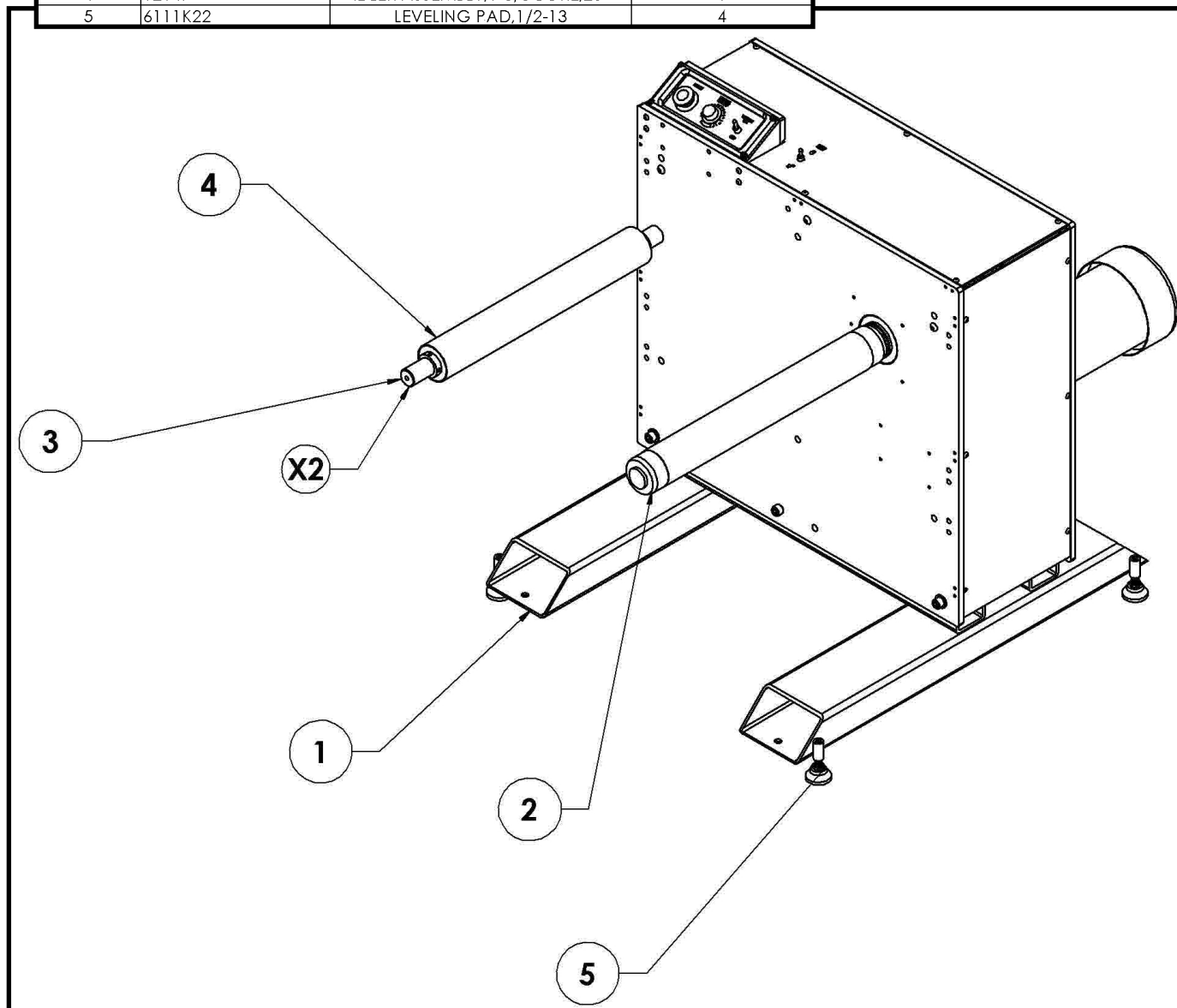
3:  
Setup

4:  
Oper

5:  
DWGs

6:  
Warr.

ITEM NO.	PART NUMBER	DESCRIPTION	STAND ALONE/QTY.
1	17527	RW 4000 SERIES, REWIND L TO R BASE ASSEMBLY	1
2	20614	CONVERTECH 21" EXPANSION, 15" SPRT SHAFT, ONE PIECE	1
3	18272	STANDOFF 1-3/8 DIA BY 37.75, TAPPED ONE END 3/8-16 X 1" DP	1
4	12147	IDLER ASSEMBLY, 1-3/8 BORE, 20"	1
5	6111K22	LEVELING PAD, 1/2-13	4

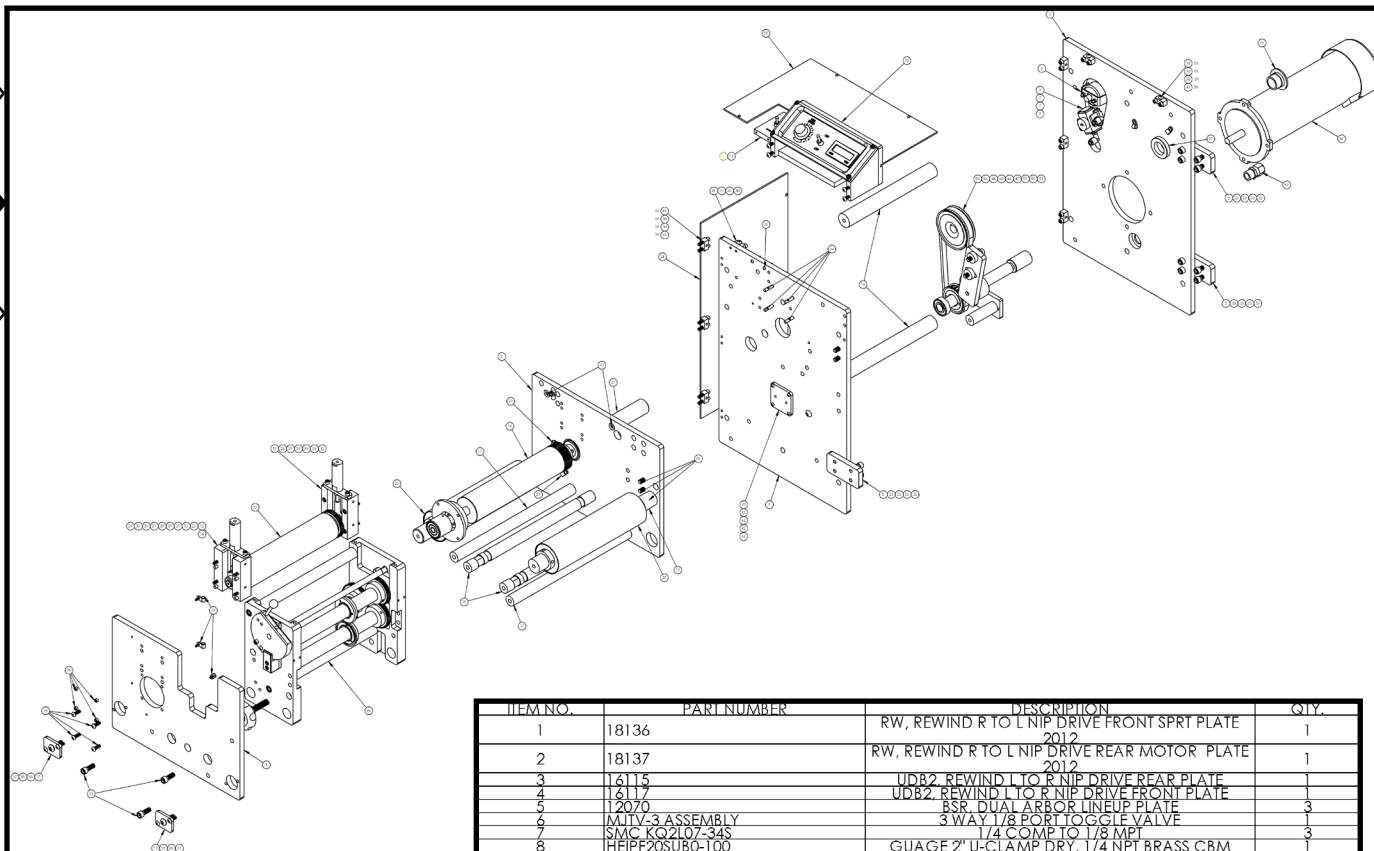


**Standalone Rewind 20", Left to Right  
(AZT: 17532)**

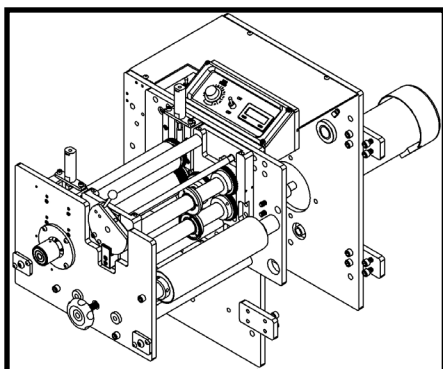
1:  
Gen.  
Info2:  
Install3:  
Setup4:  
Oper.5:  
DWGs6:  
Warr.

# AZTECH CONVERTING SYSTEMS

## RW Series USER MANUAL



### Nip Station 10" (AZT: 18143)



ITEM NO.	PART NUMBER	DESCRIPTION	QTY.
1	18136	RW, REWIND R TO L NIP DRIVE FRONT SPRT PLATE 2012	1
2	18137	RW, REWIND R TO L NIP DRIVE REAR MOTOR PLATE 2012	1
3	16115	UDB2 REWIND L TO R NIP DRIVE REAR PLATE	1
4	16117	UDB2 REWIND L TO R NIP DRIVE FRONT PLATE	1
5	12070	BSR, DUAL ARBOR LINEUP PLATE	3
6	MJTV-3 ASSEMBLY	3 WAY 1/8" PORT TOGGLE VALVE	1
7	SMC K02107-34S	1/4 COMP TO 1/8 MPT	3
8	HEIPF20SUB0-T00	GUAGE 2" U-C LAMP DRY 1/4 NPT BRASS CBM	1
9	AR20K-N01-Z	REGULATOR MODULAR AIR MASS PRO	1
10	16106	INSPECTION REWINDER, UNWIND TENSION CONTROL BOX ASSEMBLY	1
11	16109	UDB2 REWIND NIP STATION VALVE PLATE	1
12	15555	REWIND DIE CUTTER GIBB BAR RIGHT	2
13	15556	REWIND DIE CUTTER GIBB BAR LEFT	2
14	16125	REWIND DIE CUTTER BASE ROLL ASSEMBLY 10"	1
15	16629	DIE STATION SHAFT MOUNT CAP	2
16	0523	STANDOFF FRAME, TOP, BASE UNIT	2
17	03889	SHAFT, SPACER, SMALL 10" DIE STATION	2
18	0390	IDLER SHAFT, DIE STATION 10"	2
19	16124	INSPECTION REWIND WEB CLAMP IDLER SPACER BAR 10"	1
20	10787	IDLER ASSEMBLY 1 3/8 BORE 10"	2
21	16123	STANDOFF 1-3/8 DIA BY 28.25, TAPPED ONE END 3/8-16 X 1" DP	1
22	16128	REWIND DIE CUTTER NIP ROLL ASSEMBLY 10"	1
23	14353	SLITTING STATION, NIP AIR CLAMP ASSEMBLY	2
24	16099	UDB2 NIP DRIVE SIDE COVER	1
25	18139	RW NIP DRIVE TOP COVER, 2012	1
26	WIRE PLUG	WIRE PLUG	1
27	WIRE PLUG NUT	WIRE PLUG NUT	1
28	16312	REWIND DIE CUTTER SLITTING STATION R TO L 10"	1
29	1_4 CORD CLAMP WITH BOLT	1/4 cord clamp with 8-32 x 1/2 button head cap screw	8
30	SCH -250-20 UNC 1 SIMP	SOCKET HEAD CAP SCREW 1/4-20 X 1"	18
31	BNHND -250-20 UNC 0.5 SIMP	BUTTON HEAD CAP SCREW 1/4-20 X 1/2"	9
32	BNHND -164-32 UNC 1 SIMP	BUTTON HEAD CAP SCREW GRADE 5, 8-32 X 1"	2
33	SCH -375-16 UNC 1 SIMP	SOCKET HEAD CAP SCREW 3/8-16 X 1"	20
34	DWL PIN GRD -25000_75	1/4 DIA X 3/4" LONG	4
35	SSFLATSKI 0.3125-18X0.25-HX-C	SOCKET SET SCREW 5/16-18 X 1/4" FLAT NOSE	4
36	DWL PIN GRD -25000_1	1/4 DIA X 1" LONG	4
37	BNHND -375-16 UNC 1-25 SIMP	BUTTON HEAD CAP SCREW 3/8-16 X 1-1/4"	2
38	BNHND -250-20 UNC 0-75 SIMP	BUTTON HEAD CAP SCREW 1/4-20 X 3/4"	2
39	SCH -250-20 UNC 1-5 SIMP	SOCKET HEAD CAP SCREW 1/4-20 X 1-1/2"	8
40	BNHND -375-16 UNC 0-75 SIMP	BUTTON HEAD CAP SCREW 3/8-16 X 3/4"	2
41	15894	MOUNT BLOCK 1/2 X 1/2 X 1 1/4-20 THREAD, TWO 257 HOLES THRU	9
42	BNHND -164-32 UNC 0-75 SIMP	BUTTON HEAD CAP SCREW GRADE 5 8-32 X 3/4"	4
43	BNHND -375-16 UNC 1 SIMP	BUTTON HEAD CAP SCREW 3/8-16 X 1"	1
44	42378C	HP 1, RPM 1725, Armature DC Voltage 180 VDC, NEMA frame 56C	1
45	17445	BSR BEARING CAP	1
46	19003	1-5/8 OD X 3/4 ID DOUBLE SHIELDED	1
47	17632	BSR JACK SHAFT 25MM DIA	1
48	20LG050	20LG050 TIMING PULLEY	1
49	G 25MM BUSHING	Split Taper Bushing, Cast Iron, 25MM Bore	1
50	SET SCREW SHAFT COUPLER WITH KEY WAY 5.8	5/8 SHAFT COUPLING WITH KEYWAY AND SET SCREWS	1
51	17981	SR FL ONE WAY CLUTCH ASSEMBLY	1
52	17631	1" DIA STANDOFF 3" LONG 3/8-16 AND 10-24 HOLES	1
53	1_2 STRAIN RELIEF ASSEMBLY	1/2" NON METALLIC LIQUID-TIGHT TYPW B CONNECTOR	1
54	2551050	RELT	1
55	H 3_4 BUSHING	H 3/4" BORE BUSHING	1
56	30LH075 PULLEY	30LH075 TIMING PULLEY 3/8" PITCH	1
57	17629	RELT TENSIONER ASSEMBLY	1

# AZTECH CONVERTING SYSTEMS

## RW Series USER MANUAL



1:  
Gen.  
Info

2:  
Install

3:  
Setup

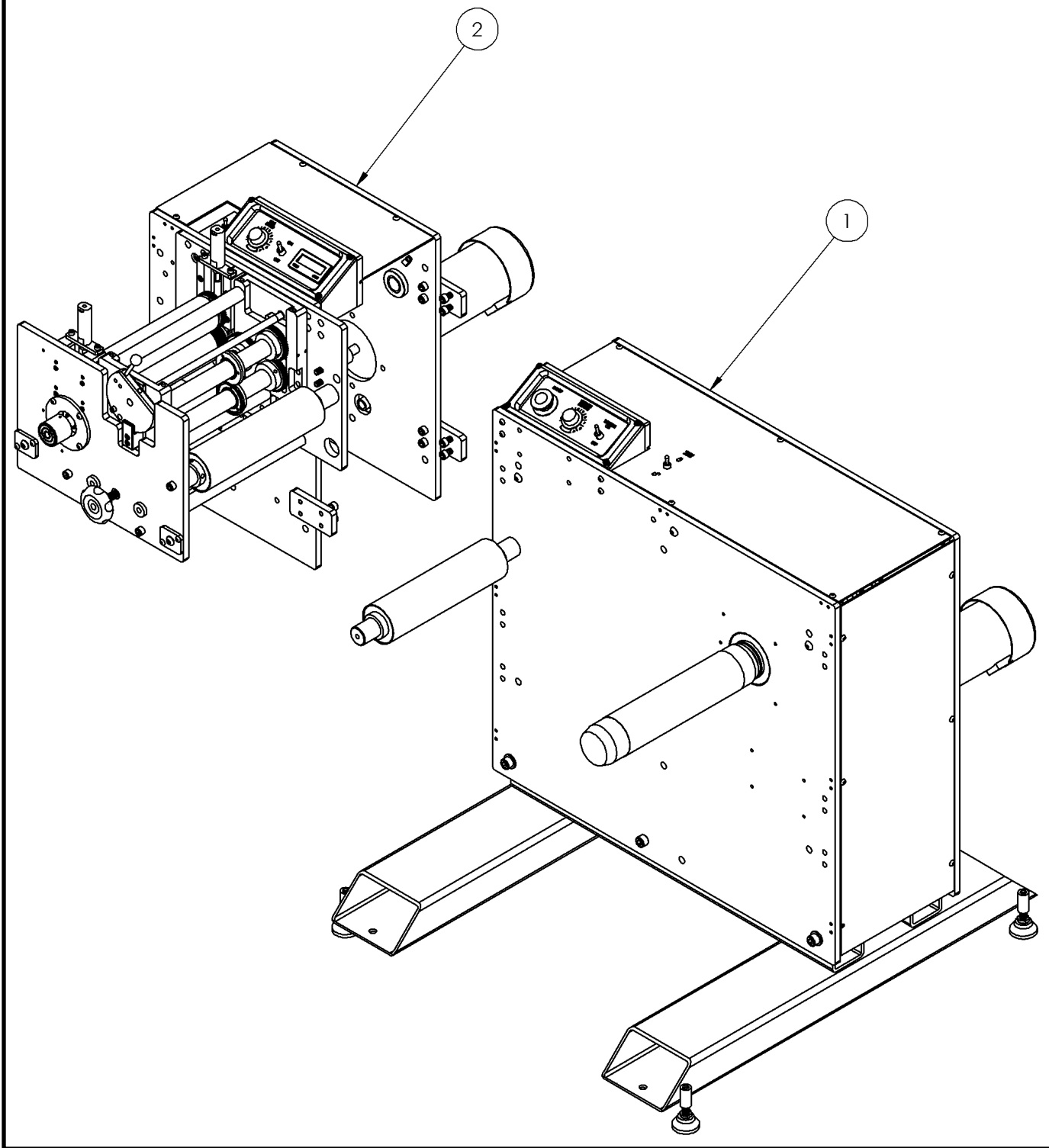
4:  
Oper

5:  
DWGs

6:  
Warr.

### Rewind With Nip Assembly, 10" (AZT: 18156)

ITEM NO.	PART NUMBER	DESCRIPTION	QTY.
1	18134	RW 4010 SERIES, REWIND L TO R ASSEMBLY	1
2	18143	RW 4010, L TO R, NIP DRIVE ASSEMBLY 2012	1



# AZTECH CONVERTING SYSTEMS

## RW Series USER MANUAL

1:  
Gen.  
Info

2:  
Install

3:  
Setup

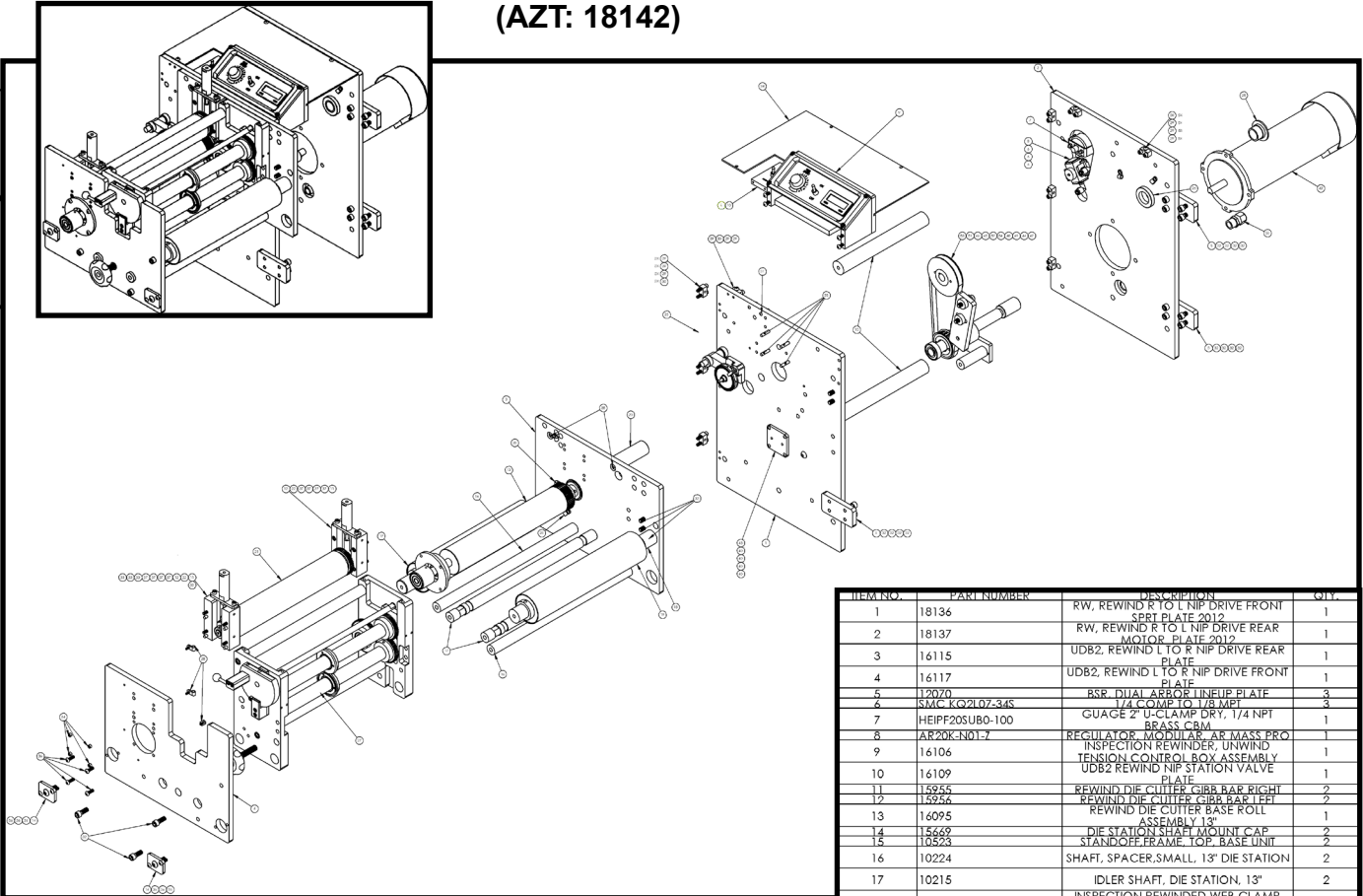
4:  
Oper.

5:  
DWGs

6:  
Warr.



### Nip Assembly 13" (AZT: 18142)



ITEM NO.	PART NUMBER	DESCRIPTION	QTY.
1	18136	RW, REWIND R TO L NIP DRIVE FRONT SPRT PLATE 2012	1
2	18137	RW, REWIND R TO L NIP DRIVE REAR MOTOR PLATE 2012	1
3	16115	UD82, REWIND L TO R NIP DRIVE REAR PLATE	1
4	16117	UD82, REWIND L TO R NIP DRIVE FRONT PLATE	1
5	12070	BSR, DUAL ARBOR LINEUP PLATE	3
6	514C-KQ2107-34S	1/4 COMP TO 1/8 MPT	3
7	HEIP205UB0-100	GUAGE 2" U-CLAMP DRY, 1/4 NPT BRASS CBM	1
8	AR20X-N01-7	REGULATOR, MODULAR, AR MASS PRO	1
9	16106	INSPECTION REWINDER, UNWIND TENSION CONTROL BOX ASSEMBLY	1
10	16109	UD82 REWIND NIP STATION VALVE PLATE	1
11	15845	REWIND DIE CUTTER GIBB BAR RIGHT	2
12	15846	REWIND DIE CUTTER GIBB BAR LEFT	2
13	16095	REWIND DIE CUTTER BASE ROLL ASSEMBLY 13"	1
14	15469	DIE STATION SHAFT MOUNT CAP	2
15	10523	STANDOFF FRAME TOP, BASE UNIT	2
16	10224	SHAFT, SPACER, SMALL, 13" DIE STATION	2
17	10215	IDLER SHAFT, DIE STATION, 13"	2
18	16104	INSPECTION REWIND WEB CLAMP IDLER SPACER BAR 13"	1
19	10585	IDLER ASSEMBLY, 1-3/8 BORE, 13"	2
20	16105	SLITTER REWINDER DIE CUT STATION STANDOFF SPRT SHAFT 13"	1
21	16110	REWIND DIE CUTTER NIP ROLL ASSEMBLY 13"	1
22	14353	SLITTING STATION, NIP AIR CLAMP ASSEMBLY	2
23	16099	UD82 NIP DRIVE SIDE COVER	1
24	18139	RW, NIP DRIVE TOP COVER, 2012	1
25	WIRE PLUG	WIRE PLUG	1
26	WIRE PLUG NUT	WIRE PLUG	1
27	16130	REWIND DIE CUTTER SLITTING STATION R TO L 13"	1
28	1 4 CORD CLAMP WITH BOLT	1/4 cord clamps with 8-32 x 1/2 button head cap screw	8
29	SCH -250-20 UNC, 1 SIMP	SOCKET HEAD CAP SCREW 1/4-20 X 1"	18
30	BTNHD -250-20 UNC, 0.5 SIMP	BUTTON HEAD CAP SCREW 1/4-20 X 1/2"	9
31	BTNHD -164-32 UNC, 1 SIMP	BUTTON HEAD CAP SCREW GRADE 5, 8-32 X 1"	2
32	SCH -375-16 UNC, 1 SIMP	SOCKET HEAD CAP SCREW 3/8-16 X 1"	20
33	DWL PIN CRO, 25000, 75	1/4 DIA X 3/4" LONG	4
34	SSLATSKT 0.3125-18x0.25-HX-C	SOCKET SET SCREW 5/16-18 X 1/4" FLAT NOSE	4
35	DWL PIN CRO, 25000, 1	1/4 DIA X 1" LONG	4
36	BTNHD -250-20 UNC, 0-75 SIMP	BUTTON HEAD CAP SCREW 1/4-20 X 3/4"	8
37	SCH -250-20 UNC, 1-5 SIMP	SOCKET HEAD CAP SCREW 1/4-20 X 1-1/2"	8
38	BTNHD -375-16 UNC, 0-75 SIMP	BUTTON HEAD CAP SCREW 3/8-16 X 1/2"	2
39	15894	MOUNT BLOCK 1/2 X 1/2 X 1 1/4-20 THREAD, TWO, 257 HOLES THRU	9
40	BTNHD -164-32 UNC, 0-75 SIMP	BUTTON HEAD CAP SCREW GRADE 5 8-32 X 3/4"	4
41	BTNHD -375-16 UNC, 1 SIMP	BUTTON HEAD CAP SCREW 3/8-16 X 1"	1
42	4Z378C	HP 1, RPM 1725, Armature DC Voltage 180 VDC, NEMA Frame 56C	1
43	17645	BSR BEARING CAP	1
44	17652	BSR JACK SHAFT 25MM DIA	1
45	201 G050	Split Taper Bushing, Cast Iron, 25MM Bore	1
46	G 25MM BUSHING	Split Taper Bushing, Cast Iron, 25MM Bore	1
47	SET SCREW SHAFT COUPLER WITH KEY WAY 5.8	5/8 SHAFT COUPLING, WITH KEYWAY AND SET SCREWS	1
48	11981	SP, EL, ONE WAY CLUTCH ASSEMBLY	1
49	17631	1" DIA STANDOFF 3" LONG 3/8-16 AND 10-24 HOLES	1
50	1731RAIN RELIEF ASSEMBLY	1/2" NON METALLIC LIQUID-TIGHT TYPW R CONN COUPLER	1
51	2581050	BELT	1
52	H 3/4 BUSHING	H 3/4 BORE BUSHING	1
53	301 B050	BUSHING	1
54	17629	BELT TENSIONER ASSEMBLY	1
55	3 WAY 1/2 PORT TOGGLE VALVE	3 WAY 1/2 PORT TOGGLE VALVE	1
56	BTNHD -375-16 UNC, 1-25 SIMP	BUTTON HEAD CAP SCREW 3/8-16 X 1-1/4"	2
57	12898	1-5/8 OD X 3/4 ID DOUBLE SHIELDED CABLE WELD ASSEMBLY 1/4"	1

# AZTECH CONVERTING SYSTEMS

## RW Series USER MANUAL



1:  
Gen.  
Info

2:  
Install

3:  
Setup

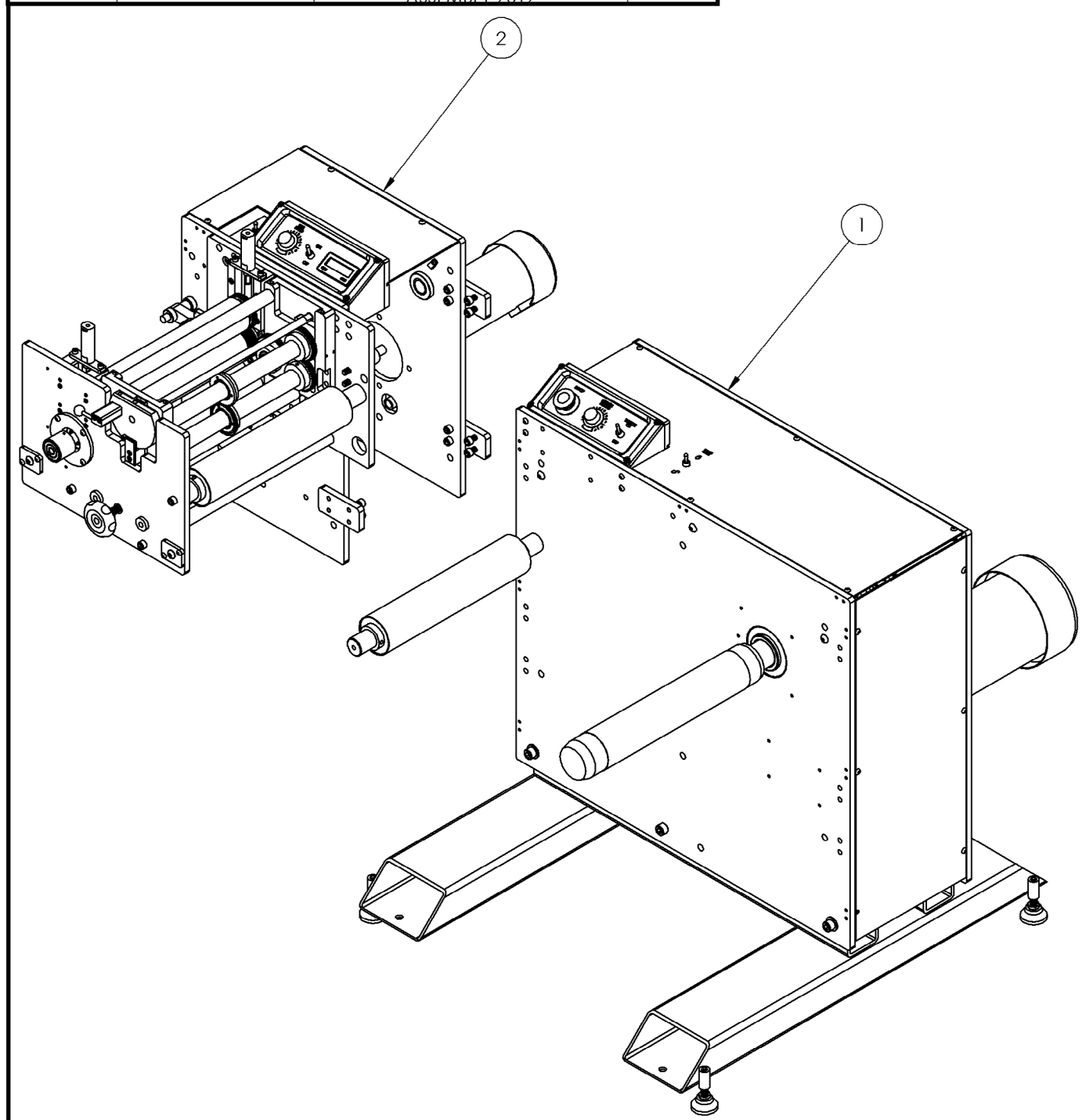
4:  
Oper

5:  
DWGs

6:  
Warr.

### Rewind and Nip Assembly 13", Left to Right (AZT: 18157)

ITEM NO.	PART NUMBER	DESCRIPTION	Default/ QTY.
1	18133	RW 4013 SERIES, REWIND L TO R ASSEMBLY	1
2	18142	RW 4013, L TO R, NIP DRIVE ASSEMBLY 2012	1





# AZTECH CONVERTING SYSTEMS

## RW Series USER MANUAL

1:  
Gen.  
Info

2:  
Install

3:  
Setup

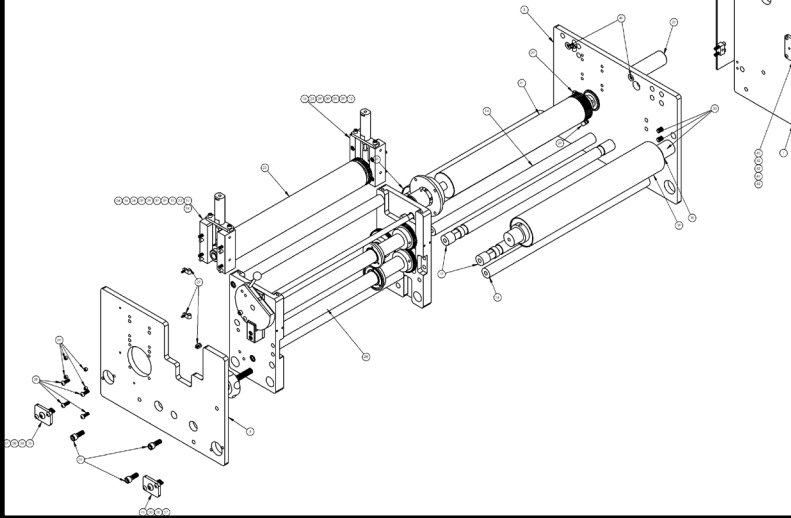
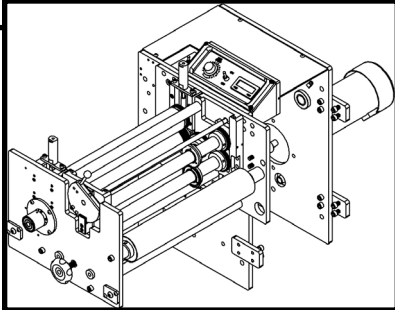
4:  
Oper.

5:  
DWGs

6:  
Warr.



### Nip Assembly 16" (AZT: 18140)



ITEM NO.	PART NUMBER	DESCRIPTION	QTY.
1	18136	RW. REWIND R TO L NIP DRIVE FRONT SPRT PLATE 2012	1
2	18137	RW. REWIND R TO L NIP DRIVE REAR MOTOR PLATE 2012	1
3	16115	UDB2, REWIND L TO R NIP DRIVE REAR PLATE	1
4	16117	UDB2, REWIND L TO R NIP DRIVE FRONT PLATE	1
5	12070	BSR. DUAL ARBOR LINEUP PLATE	3
6	414V-3 ASSEMBLY	3 WAY 1/8 PORT TOGGLE VALVE	1
7	SMC KQ2L07-34S	1/4 COMP TO 1/8 MPT	3
8	HEIPF20SUB0-100	GUAGE 2" U-CLAMP DRY, 1/4 NPT BRASS CBM	1
9	AR20K-N01-7	REGULATOR, MODULAR, AIR MASS PRO	1
10	16106	INSPECTION REWINDER, UNWIND TENSION CONTROL BOX ASSEMBLY	1
11	16109	UDB2 REWIND NIP STATION VALVE PLATE	1
12	15955	REWIND DIE CUTTER GIBB BAR RIGHT	2
13	15956	REWIND DIE CUTTER GIBB BAR LEFT	2
14	16317	SHAFT, SPACER, SMALL, 16" DIE STATION	2
15	15669	DIE STATION SHAFT MOUNT CAP	2
16	10523	STANDOFF FRAME, TOP, BASE UNIT	2
17	16320	IDLER SHAFT, DIE STATION, 16"	2
18	16318	INSPECTION REWIND WEB CLAMP IDLER SPACER BAR 16"	1
19	10592	IDLER ASSEMBLY, 1-3/8 BORE, 16"	2
20	16316	SLITTER REWINDER DIE CUT STATION STANDOFF SPRT SHAFT 16"	1
21	16321	REWIND DIE CUTTER BASE ROLL ASSEMBLY 16"	1
22	16324	REWIND DIE CUTTER NIP ROLL ASSEMBLY 16"	1
23	14353	SLITTING STATION, NIP AIR CLAMP ASSEMBLY	2
24	16099	UDB2 NIP DRIVE SIDE COVER	1
25	18138	RW. NIP DRIVE TOP COVER, 2012	1
26	WIRE PLUG	WIRE PLUG	1
27	WIRE PLUG NUT	WIRE PLUG NUT	1
28	16319	REWIND DIE CUTTER SLITTING STATION R TO L 16"	1
29	1-4 CORD CLAMP WITH BOLT	1/4 cord clamp with 8-32 x 1/2 button head cap screw	8
30	5CH-250-20 UNC-1 SIMP	SOCKET HEAD CAP SCREW 1/4-20 X 1"	18
31	8TNHD-250-20 UNC-0.5 SIMP	BUTTON HEAD CAP SCREW 1/4-20 X 1/2"	9
32	8TNHD-164-32 UNC-1 SIMP	BUTTON HEAD CAP SCREW GRADE 5, 8- 32 X 1"	2
33	5CH-375-16 UNC-1 SIMP	SOCKET HEAD CAP SCREW 3/8-16 X 1"	20
34	DWL PIN CRD-25000-75	1/4 DIA X 3/4" LONG	4
35	SFLATSKT 0.3125- 18x0.25-HX-C	SOCKET SET SCREW 5/16-18 X 1/4" FLAT NOSE	4
36	DWL PIN GRD-25000-1	1/4 DIA X 1" LONG	4
37	8TNHD-375-16 UNC-1-25 SIMP	BUTTON HEAD CAP SCREW 3/8-16 X 1- 1/4"	2
38	8TNHD-250-20 UNC-0-75 SIMP	BUTTON HEAD CAP SCREW 1/4-20 X 3/4"	8
39	5CH-250-20 UNC-1.5 SIMP	SOCKET HEAD CAP SCREW 1/4-20 X 1- 1/2"	8
40	8TNHD-375-16 UNC-0-75 SIMP	BUTTON HEAD CAP SCREW 3/8-16 X 1"	2
41	15894	MOUNT BLOCK 3/4 X 1/2 X 1 1/4-20 THREAD, TWO .257 HOLES THRU	9
42	8TNHD-164-32 UNC-0-75 SIMP	BUTTON HEAD CAP SCREW GRADE 5 8- 32 X 3/4"	4
43	8TNHD-375-16 UNC-1 SIMP	BUTTON HEAD CAP SCREW 3/8-16 X 1"	1
44	4Z378C	HP 1, RPM 1725, Armature DC Voltage 180 VDC, NEMA Frame 56C	1
45	17645	BSR BEARING CAP	1
46	19003	1-5/8 OD X 3/4 ID DOUBLE SHIELDED	1
47	17632	BSR JACK SHAFT 25MM DIA	1
48	20LGD50	20LGD50 TIMING PULLEY	1
49	G 25MM BUSHING	Split Taper Bushing, Cast Iron, 25MM Bore	1
50	SET SCREW SHAFT COUPLER WITH KEY WAY 5, 8	5/8 SHAFT COUPLING WITH KEYWAY AND SET SCREWS	1
51	11281	SP. ET. ONE WAY CLUTCH ASSEMBLY	1
52	17631	1" DIA STANDOFF 3" LONG 3/8-16 AND 10-24 HOLES	1
53	1-2 STRAIN RELIEF ASSEMBLY	1/2" NON METALLIC LIQUID-TIGHT TYPW B CONNECTOR	1
54	25SLO50	BELT	1
55	H 3-4 BUSHING	H 3/4" BORE BUSHING	1
56	20LH50	PULLEY 30 TOOTH	1
57	17628	BELT TENSIONER ASSEMBLY	1

# AZTECH CONVERTING SYSTEMS

## RW Seires USER MANUAL



1:  
Gen.  
Info

2:  
Install

3:  
Setup

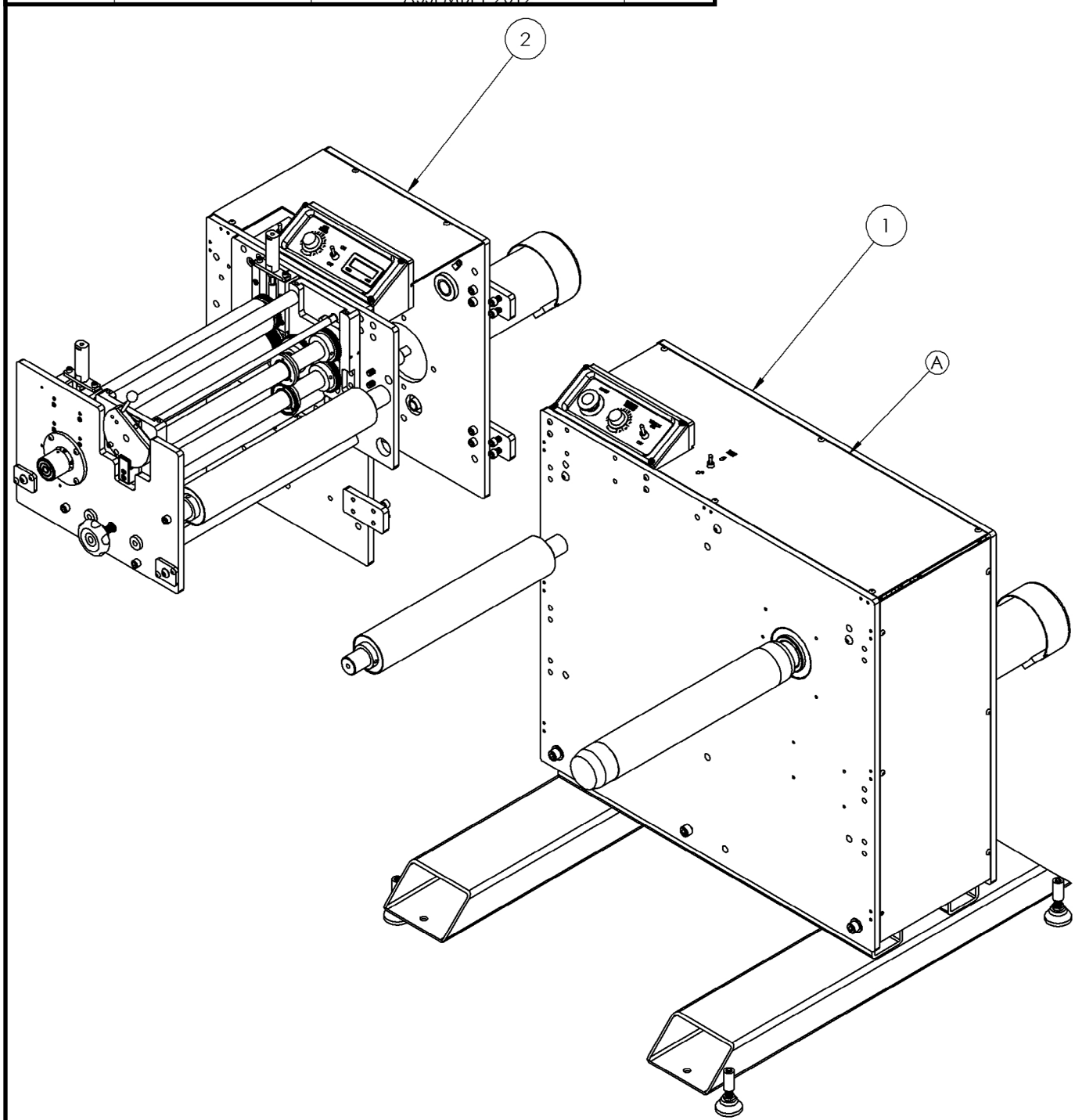
4:  
Oper

5:  
DWGs

6:  
Warr.

### Rewind and Nip Assembly 16", Left to Right (AZT: 18158)

ITEM NO.	PART NUMBER	DESCRIPTION	QTY.
1	18131	RW 4016 SERIES, REWIND L TO R ASSEMBLY	1
2	18140	RW 4016, L TO R, NIP DRIVE ASSEMBLY 2012	1



# AZTECH CONVERTING SYSTEMS

## RW Series USER MANUAL

1:  
Gen.  
Info

2:  
Install

3:  
Setup

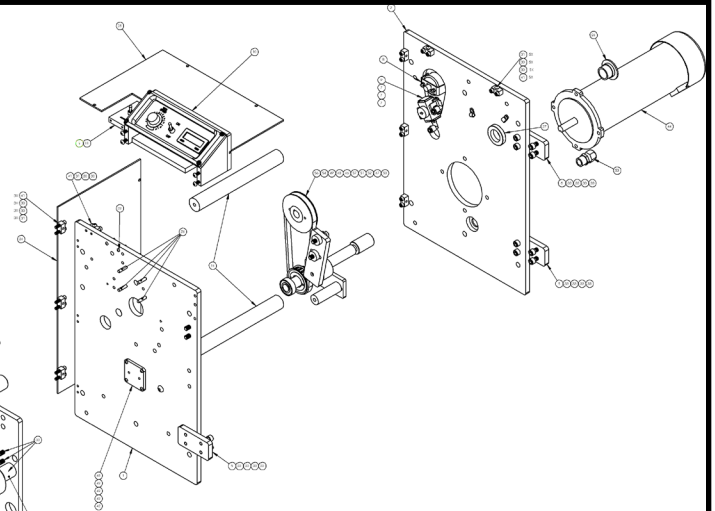
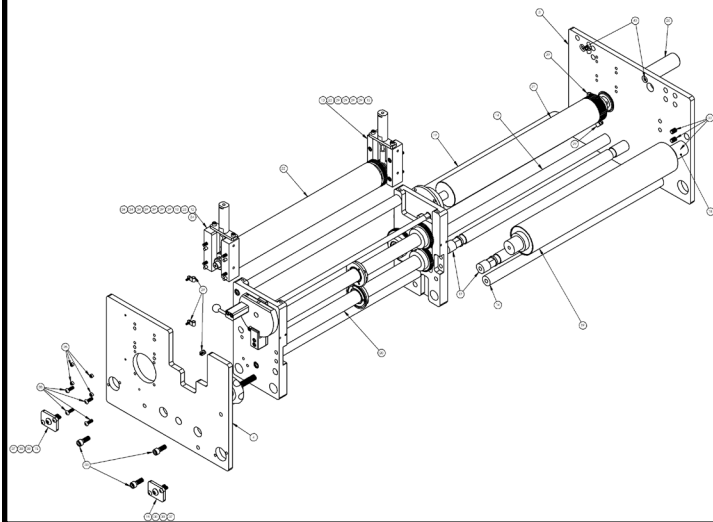
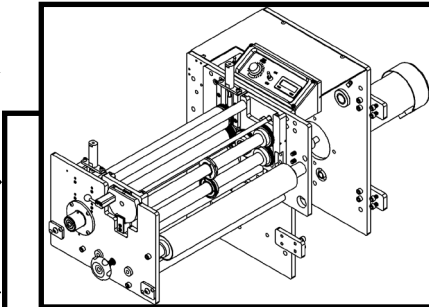
4:  
Oper.

5:  
DWGs

6:  
Warr.



### Nip Assembly (AZT: 18135)



ITEM NO.	PART NUMBER	DESCRIPTION	QTY
1	18136	RW, REWIND R TO L NIP DRIVE FRONT	1
2	18137	RW, REWIND R TO L NIP DRIVE REAR	1
3	16115	UDB2, REWIND L TO R NIP DRIVE REAR	1
4	16117	UDB2, REWIND L TO R NIP DRIVE FRONT	1
5	12070	BSR, DUAL ARBOR LINEUP PLATE	3
6	MITY-3 ASSEMBLY	3 WAY 1/8 PORT TOGGLE VALVE	1
7	SMC K0210-2345	1/4 COMP TO 1/8 NPT	3
8	HEIPF20SUB0-100	GUAGE 2" U-CLAMP DRY, 1/4 NPT	1
9	AR20K-101-2	REGULATOR, MODULAR, AR MASS PRO	1
10	16106	INSPECTION REWINDER, UNWIND	1
11	16109	TENSION CONTROL BOX ASSEMBLY	1
12	15425	UDB2 REWIND NIP STATION VALVE	1
13	16256	REWIND DIE CUTTER GIBB BAR RIGHT	2
14	12268	REWIND DIE CUTTER GIBB BAR LEFT	2
15	15669	SHAFT, SPACER, SMALL, 18" DIE STATION	2
16	10523	DIE STATION SHAFT MOUNT CAP	2
17	12267	STANDOFF FRAME, TOP, BASE UNIT	2
18	16003	IDLER SHAFT, DIE STATION, 18"	2
19	12061	STANDOFF 1-3/8 DIA X 22.75" TAPPED	1
20	15556	3/8-16 BOTH ENDS	2
21	15964	IDLER ASSEMBLY, 1-3/8 BORE, 18"	2
22	15958	STANDOFF 1-3/8 DIA BY 34.25" TAPPED	1
23	14353	ONE END 3/8-16 X 1" DP	1
24	16099	REWIND DIE CUTTER BASE ROLL	1
25	18139	ASSEMBLY 18"	1
26	16099	REWIND DIE CUTTER NIP ROLL ASSEMBLY	1
27	16099	SPLITTING STATION, NIP AIR CLAMP	2
28	18030	UDB2, NIP DRIVE SIDE COVER	1
29	16099	RW, NIP DRIVE TOP COVER, 2012	1
30	16099	WIRE PLUG	1
31	16099	WIRE PLUG NUT	1
32	16099	REWIND DIE CUTTER SPLITTING STATION R	1
33	16099	1/4 CORD CLAMP WITH 8-32 X 1/2 BUTTON	8
34	16099	HEAD CAP SCREW	18
35	16099	SOCKET HEAD CAP SCREW 1/4-20 X 1"	9
36	16099	BUTTON HEAD CAP SCREW 1/4-20 X 1/2"	2
37	16099	BUTTON HEAD CAP SCREW GRADE 5, 8-32 X 1"	20
38	16099	SOCKET HEAD CAP SCREW 3/8-16 X 1"	4
39	16099	1/4 DIA X 3/4" LONG	4
40	16099	SOCKET SET SCREW 5/16-18 X 1/4" FLAT	4
41	16099	NOSE	4
42	16099	1/4 DIA X 1" LONG	2
43	16099	BUTTON HEAD CAP SCREW 3/8-16 X 1-1/4"	8
44	16099	BUTTON HEAD CAP SCREW 1/4-20 X 1-1/4"	8
45	16099	SOCKET HEAD CAP SCREW 1/4-20 X 1-1/2"	2
46	16099	BUTTON HEAD CAP SCREW 3/8-16 X 1-1/2"	2
47	16099	BUTTON HEAD CAP SCREW 3/8-16 X 1-1/2"	9
48	16099	MOUNT BLOCK 1/2 X 1/2 X 1 1/4-20	4
49	16099	THREAD TWO .057 HOLES THRU 32 X 3/4"	1
50	16099	BUTTON HEAD CAP SCREW GRADE 5 8-32 X 3/4"	1
51	16099	BUTTON HEAD CAP SCREW 3/8-16 X 1"	1
52	16099	HP 1, RPM 1725, Armature DC Voltage 180 VDC, MEHA Frame 55C	1
53	16099	ASE BEARING CAP	1
54	16099	1-5/8 OD X 3/4 ID DOUBLE SHIELDED	1
55	16099	RSV JACK SHAFT 25MM DIA	1
56	16099	201 G050 TIMING PULLEY	1
57	16099	G 25MM BUSHING	1
58	16099	Split Taper Bushing, Cast Iron, 25MM Bore	1
59	16099	SET SCREW SHAFT COUPLER WITH KEY WAY	1
60	16099	5/8 SHAFT COUPLING WITH KEYWAY AND SET SCREWS	1
61	16099	SR, ET, ONE WAY CLUTCH ASSEMBLY	1
62	16099	1" DIA STANDOFF 3" LONG 3/8-16 AND 10-24 HOLES	1
63	16099	1/2" NON METALLIC LIQUID-TIGHT TYPW B CONNECTOR	1
64	16099	PIPE	1
65	16099	H 3/4" BORE BUSHING	1
66	16099	PULLEY 30 TOOTH	1
67	16099	REEL TENSIONING ASSEMBLY	1



# AZTECH CONVERTING SYSTEMS

## RW Seires USER MANUAL



1:  
Gen.  
Info

2:  
Install

3:  
Setup

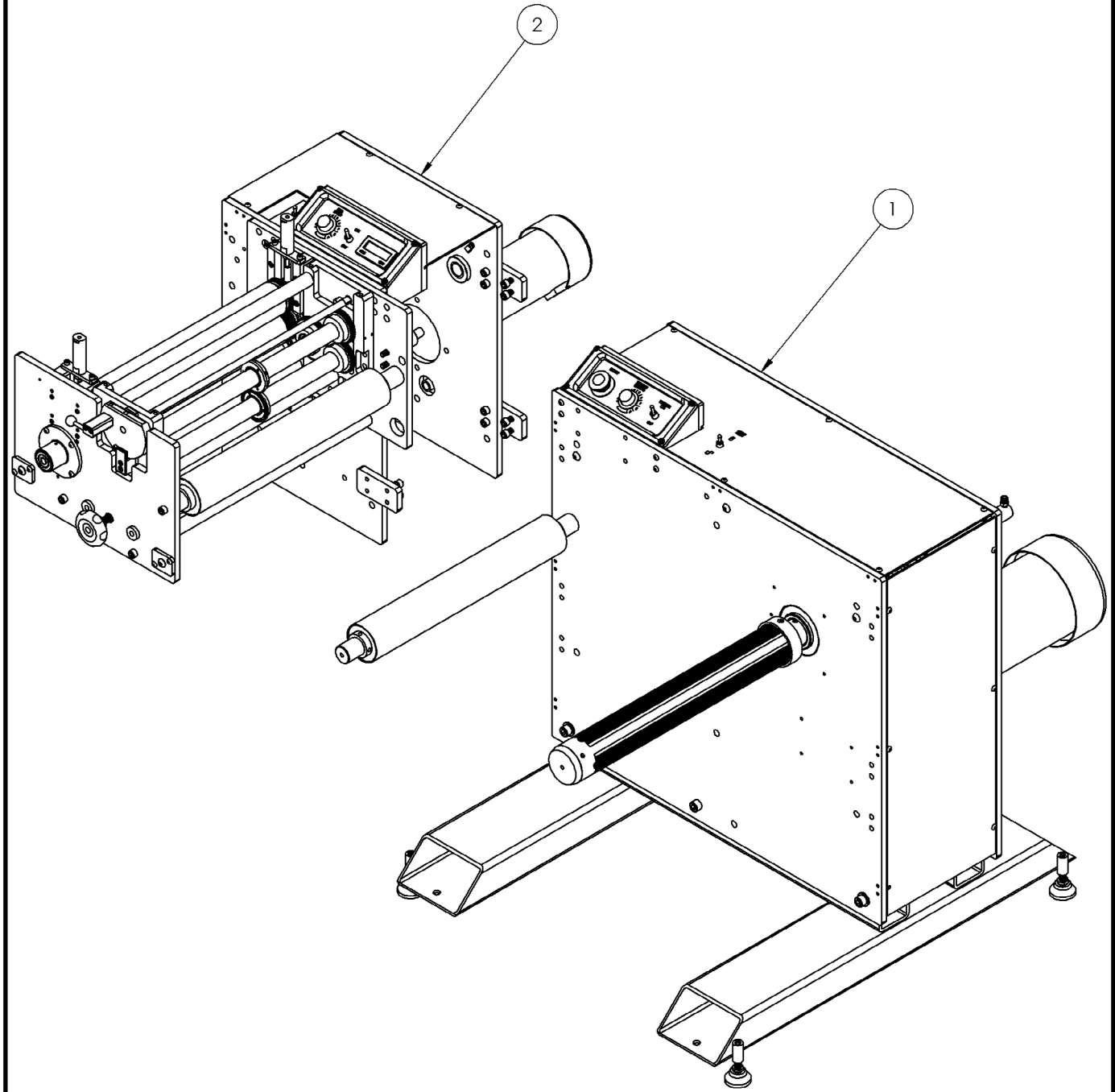
4:  
Oper

5:  
DWGs

6:  
Warr.

### Rewind and Nip Assembly 18", Left to Right (AZT: 18163)

ITEM NO.	PART NUMBER	DESCRIPTION	QTY.
1	18128	RW 4018 SERIES, REWIND L TO R ASSEMBLY	1
2	18135	RW 4016, L TO R, NIP DRIVE ASSEMBLY 2012	1



# AZTECH CONVERTING SYSTEMS

## RW Series USER MANUAL

1:  
Gen.  
Info

2:  
Install

3:  
Setup

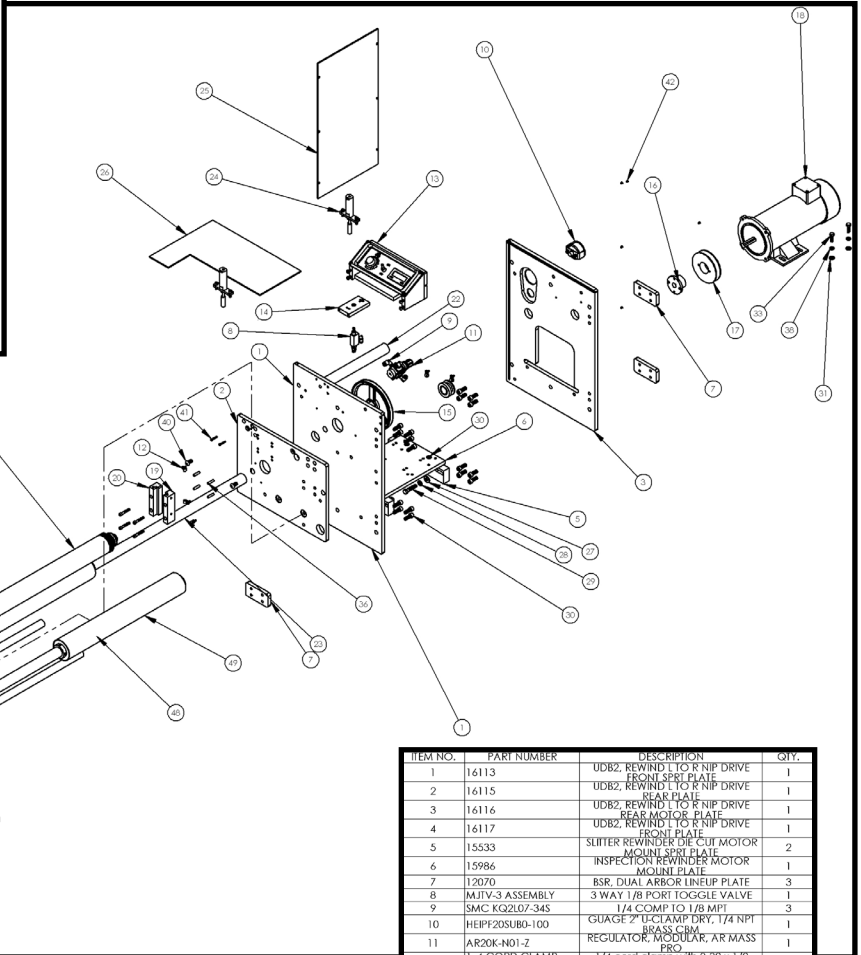
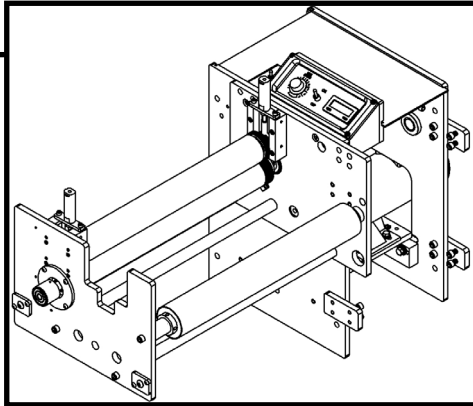
4:  
Oper.

5:  
DWGs

6:  
Warr.



### Nip Assembly 20" (AZT: 22146)



ITEM NO.	PART NUMBER	DESCRIPTION	QTY.
1	16113	UDB2, REWIND L TO R NIP DRIVE FRONT SPRT PLATE	1
2	16115	UDB2, REWIND L TO R NIP DRIVE REAR PLATE	1
3	16116	UDB2, REWIND L TO R NIP DRIVE REAR MOTOR PLATE	1
4	16117	UDB2, REWIND L TO R NIP DRIVE FRONT PLATE	1
5	15533	SLITTER REWINDER DIE CUT MOTOR MOUNT SPRT PLATE	2
6	15986	INSPECTION REWINDER MOTOR MOUNT PLATE	1
7	12070	BSR, DUAL ARBOR LINEUP PLATE	3
8	MJTV-3 ASSEMBLY	3 WAY 1/8 PORT TOGGLE VALVE	1
9	54C K2107-345	1/4 COMP 10 1/8 MP	3
10	HEP20S0B0-100	GUAGE 2" U-CLAMP DRY, 1/4 NPT REGULATOR, MICROAIR, AIR MASS	1
11	AR20K-N01-2	PRO	1
12	1"4CORD CLAMP WITH BOLT	1/4 cord clamp with 8-32 x 1/2 button head cap screw	8
13	16106	INSPECTION REWINDER, UNWIND TENSION CONTROL BOX ASSEMBLY	1
14	16109	UDB2 REWIND NIP STATION VALVE PLATE	1
15	3X794	AL74 X 3/4 BORE 6.78 DP	1
16	H 5, 8 BUSHING		1
17	BK45H	4L SINGLE GROOVE SHEAVE	1
18	HHPPVTS505180 THP 180 VDC	1HP MOTOR 180 VDC 56C FRAME	1
19	15955	REWIND DIE CUTTER GIBB BAR RIGHT	2
20	15956	REWIND DIE CUTTER GIBB BAR LEFT	2
21	15669	DIE STATION SHAFT MOUNT CAP	2
22	10523	STANDOFF FRAME, TOP, BASE UNIT	2
23	18272	STANDOFF 1-3/8 DIA BY 37.75, TAPPED ONE END 3/8-16 X 1" DP	1
24	14353	SLITTER STATION, NIP AIR CLAMP ASSEMBLY	2
25	16099	UDB2, NIP DRIVE SIDE COVER	1
26	16100	UDB2, NIP DRIVE TOP COVER	1
27	WSHR A .375 HARD	3/8" HARD WASHER	4
28	WSHR A .375 LOCK	3/8 INCH LOCK WASHER	4
29	HEX BOLT -3/5-16 UNC -1.74 GRADE 2 SCHT -3/5-16	HEX BOLT 3/8-16 X 1-3/4"	4
30	UNC -1 SIMP	SOCKET HEAD CAP SCREW 3/8-16 X 1-3/4"	24
31	WSHR A .3125 HARD	5/16" GROUND HARD WASHER	4
32	WSHR .312 LOCK	5/16 LOCK WASHER	4
33	HEX BOLT -3125-18 UNC -1 SIMP	HEX HEAD BOLT 5/16-18 X 1"	4
34	DWLT PIN	1/4 DIA X 3/4" LONG	4
35	GRD 25000 .75 SFLATSKT 0.3125-16W 28-HX-C	SOCKET SET SCREW 5/16-18 X 1/4" FLAT NOSE	4
36	GRD 25000 .1	1/4 DIA X 1" LONG	4
37	UNC -1-25 SIMP	BUTTON HEAD CAP SCREW 3/8-16 X 1-1/4"	2
38	BTND -250-20 UNC 0-75 SIMP	BUTTON HEAD CAP SCREW 1/4-20 X 3/4"	8
39	SCHT -250-20 UNC 0-75 SIMP	SOCKET HEAD CAP SCREW 1/4-20 X 3/4"	8
40	BTND -3/5-16 UNC 0-75 SIMP	BUTTON HEAD CAP SCREW 3/8-16 X 1"	2
41	BTND -164-32 UNC 1 SIMP	BUTTON HEAD CAP SCREW GRADE 8-32 X 1"	2
42	UNC 1-25 SIMP	SOCKET SET SCREW CUP POINT 10-32 X 1/4"	5
43	16152	3/4" BORE ONE WAY CLUTCH ASSEMBLY	1
44	WIRE PLUG	WIRE PLUG	1
45	WIRE PLUG NUT	PLUG NUT	1
46	18553	INSPECTION REWINDER BASE ROLL ASSEMBLY 20"	1
47	17972	SHAFT, SPACER SMALL 20" DIE STATION	2
48	18566	INSPECTION REWIND WEB CLAMP IDLER SPACER BAR 20"	1
49	12147	IDLER ASSEMBLY, 1-3/8 BORE 20"	2
50	18559	REWIND DIE CUTTER NIP ROLL ASSEMBLY 20"	1



1:  
Gen.  
Info

2:  
Install

3:  
Setup

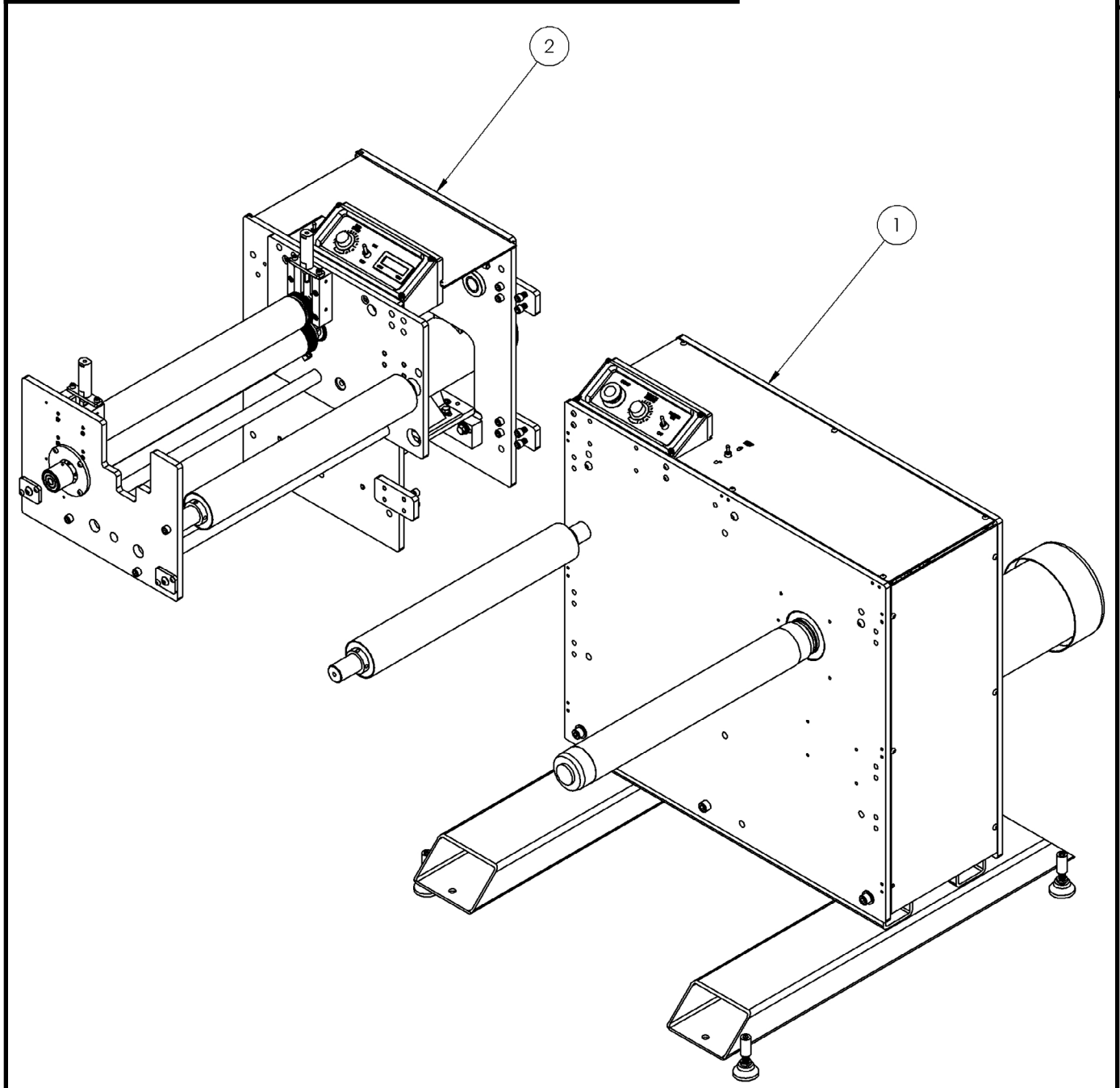
4:  
Oper

5:  
DWGs

6:  
Warr.

## Rewind and Nip Assembly 20", Left to Right (AZT: 22147)

ITEM NO.	PART NUMBER	DESCRIPTION	QTY.
1	17532	RW 4020 SERIES, REWIND L TO R BASE ASSEMBLY	1
2	22146	UDB2 4020, L TO R, NIP DRIVE ASSEMBLY	1



1:  
Gen.  
Info

2:  
Install

3:  
Setup

4:  
Oper.

5:  
DWGs

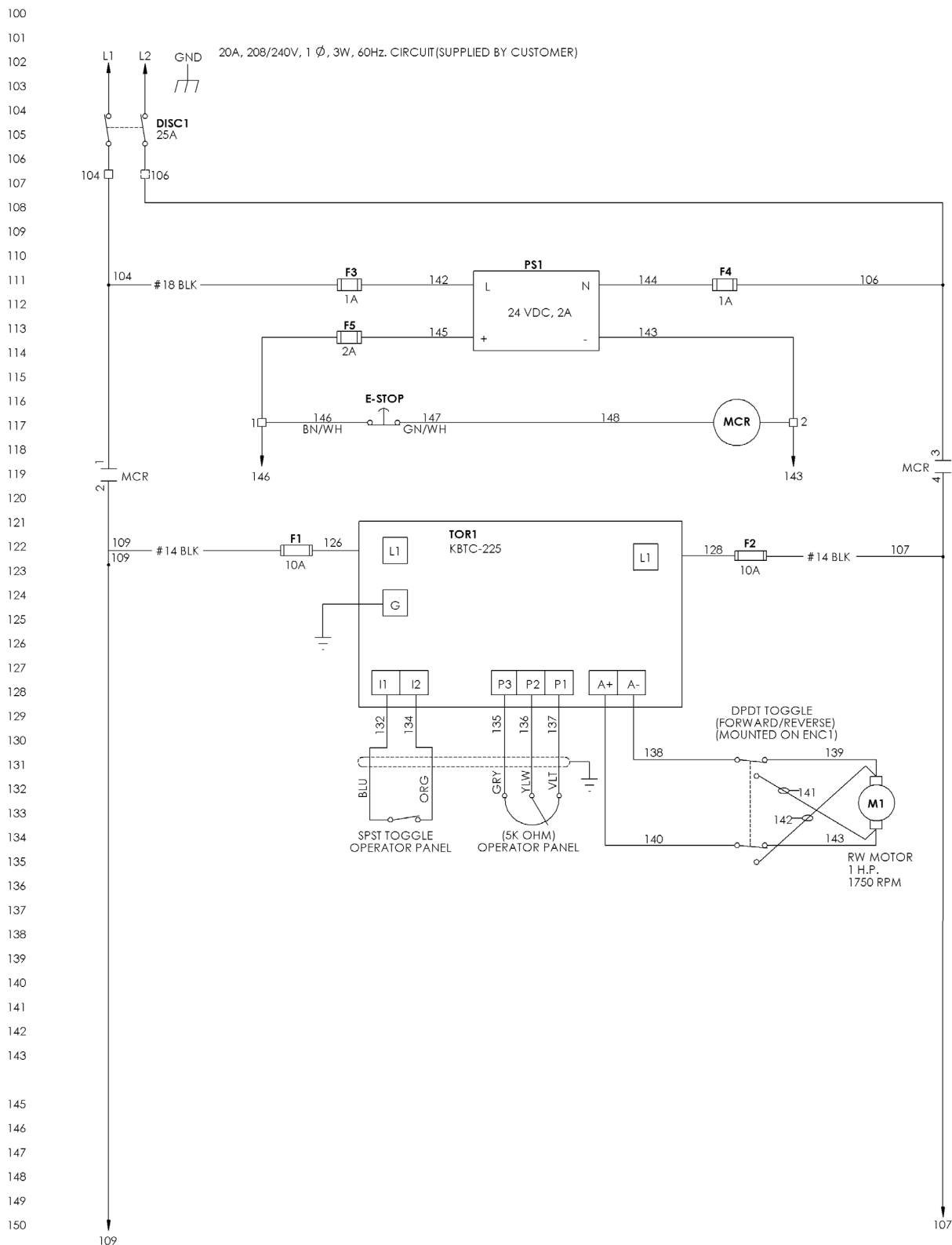
6:  
Warr.



# AZTECH CONVERTING SYSTEMS

## RW Series USER MANUAL

### Electrical Schematic, Rewind Only





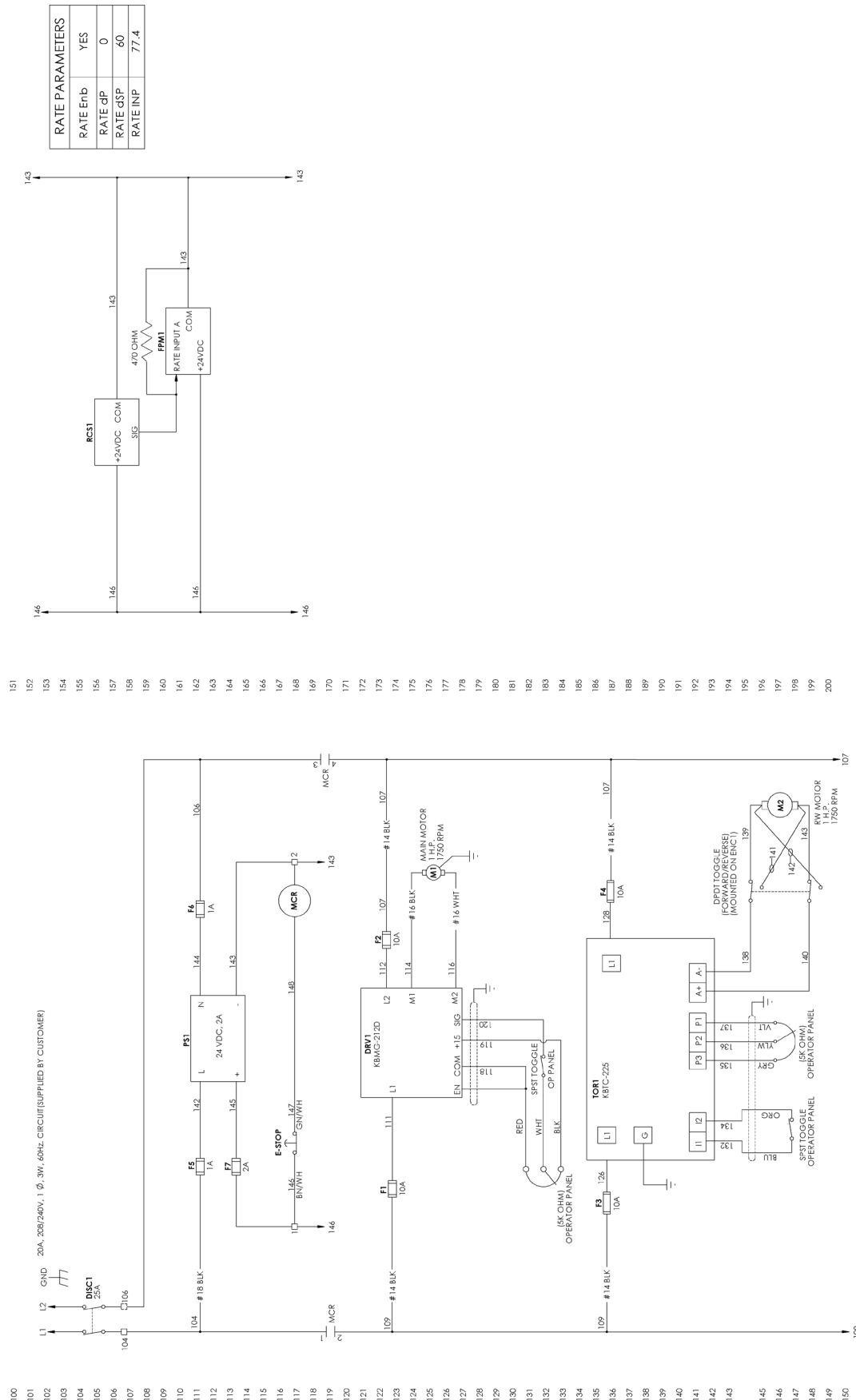
1:  
Gen.  
Info

## 2: install

### 3: Setup

4:	Oper
----	------

## 5: DWGs

6:  
Warr.

## Electrical Schematic, Rewind and Nip



## Section 6: Warranties and Service

### 6-1: Warranties & Provisions

**WARRANTIES:** All equipment manufactured and sold by AZTECH Converting Systems (Seller) is warranted to be free of defective materials and workmanship under normal use and service for a period of one (1) year from the date of delivery to Buyer's premises. All commercial components not manufactured by Seller carry the original manufacturer's warranty. At Seller's discretion, Seller may provide on-site warranty service for a period of ninety (90) days from the aforementioned date.

**REMEDIES** If within the Warranty Period any such Equipment is proven to Seller's satisfaction to be defective in either material or workmanship, Seller, at its sole discretion, shall (a) repair or replace defective parts on the Equipment at Seller's cost, or (b) grant a reasonable allowance on account of such a breach. If within the Warranty Period the Seller receives notice from Buyer of defects in parts or materials. Seller will ship (ground, prepaid) replacement parts and invoice Buyer for the full cost of the replacement parts). Buyer will receive a Return Authorization (RA) from seller, and return defective parts or materials to Seller, who at its sole discretion shall determine whether defective parts or materials are or are not subject to exclusion from this warranty as provided herein. Any defective parts or material not excluded from the Warranty Period will then be fully credited to Buyer.

### EXCLUSIONS

#### THE FOLLOWING ITEMS ARE EXCLUDED FROM THIS WARRANTY:

- Defects or damage caused by careless or improper use.
- Parts that need periodic replacement from wear during normal operation.
- Routine maintenance and adjustment.
- Failure or damage caused by improper installation or inadequate maintenance by Buyer.
- Failure or damage caused by equipment modifications by Buyer.
- Equipment damage resulting from an accident, or abnormal conditions of operation.

### DISCLAIMER OR WARRANTY

**NO OTHER WARRANTY IS EXPRESSED OR IMPLIED INCLUDING WARRANTIES OF MERCHANTABILITY AND FITNESS FOR ANY PARTICULAR PURPOSE. SELLER IS NOT LIABLE FOR INCIDENTAL OR CONSEQUENTIAL DAMAGE SUCH AS, BUT NOT LIMITED TO LOSS IN PROFITS, LOSS OF USE OF EQUIPMENT, OR INCREASED IN OPERATING COSTS OR EXPENSES.**

### 6-2: Technical Service

In the event that your X90 is not functioning properly or if you have any technical questions, an AZTECH Technical Service representative is available to assist you. Contact information is as follows:

**Phone:** 1-480-951-8351  
1-800-829-8351  
**Fax:** 1-480-998-5409  
**E-Mail:** techservice@aztechconverting.com