



AZTECH CONVERTING SYSTEMS

212 W Lodge Drive

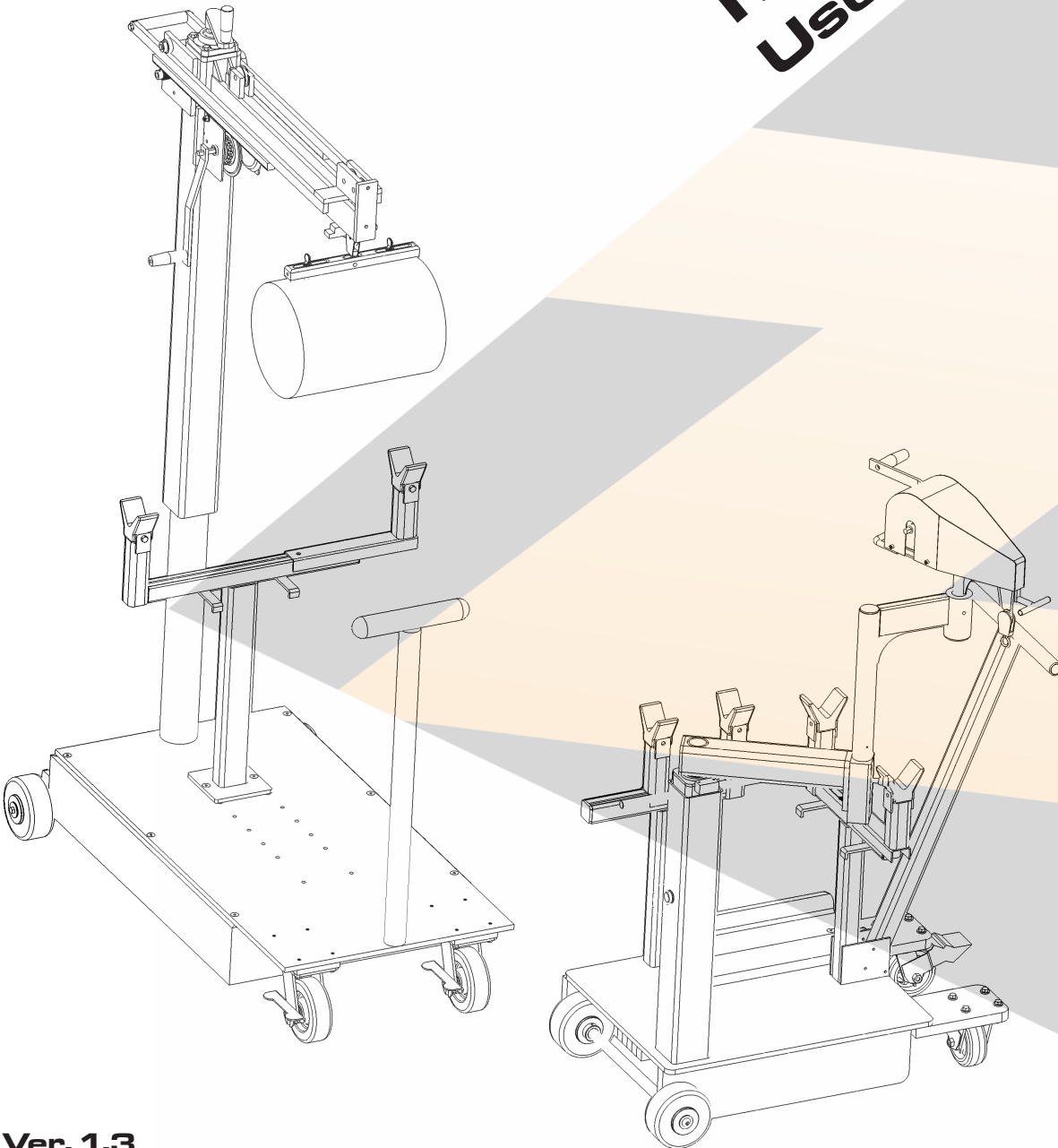
TEMPE, AZ 85283

PHONE (480) 951-8351

FAX (480) 998-5409

www.aztechconverting.com

Die Lift & Mobile Platform User Manual



Ver. 1.3



AZTECH CONVERTING SYSTEMS

**Die Lifter & Mobile Crane
USER MANUAL**

TABLE OF CONTENTS

SECTION 1: GENERAL INFORMATION	1-6
SECTION 2: MACHINE SETUP	7
SECTION 3: MACHINE OPERATION	7-13
SECTION 4: MAINTENANCE	14
SECTION 5: STATION DETAIL	16-21
SECTION 6: TROUBLESHOOTING	22
SECTION 7: WARRENTIES AND SERVICE	23



Section 1: General Information

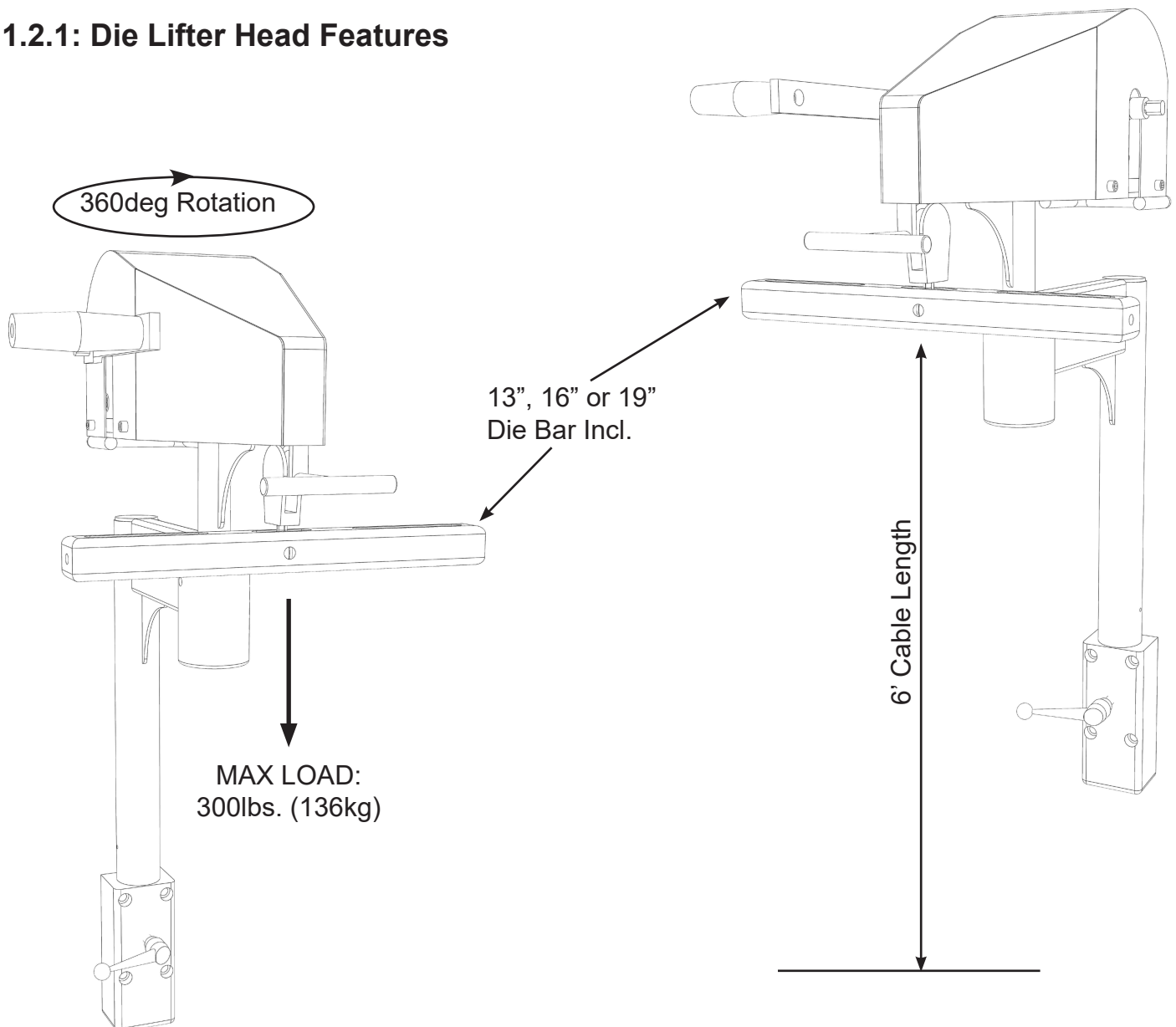
1.1: Introduction

The AZTECH Die Lifter and Mobile Crane are designed and manufactured to allow you to safely load and unload dies and rollers from the AZTECH DieMaster or other die cutting machinery, eliminating expensive machine damage or personal injury. It is available with as both a machine attachment and a dedicated cart.

These platforms with their all-steel construction will prove to be an invaluable product for your work environment and is sure to provide your company with many years of safe dependable service.

1.2: Machine Information and Specifications

1.2.1: Die Lifter Head Features

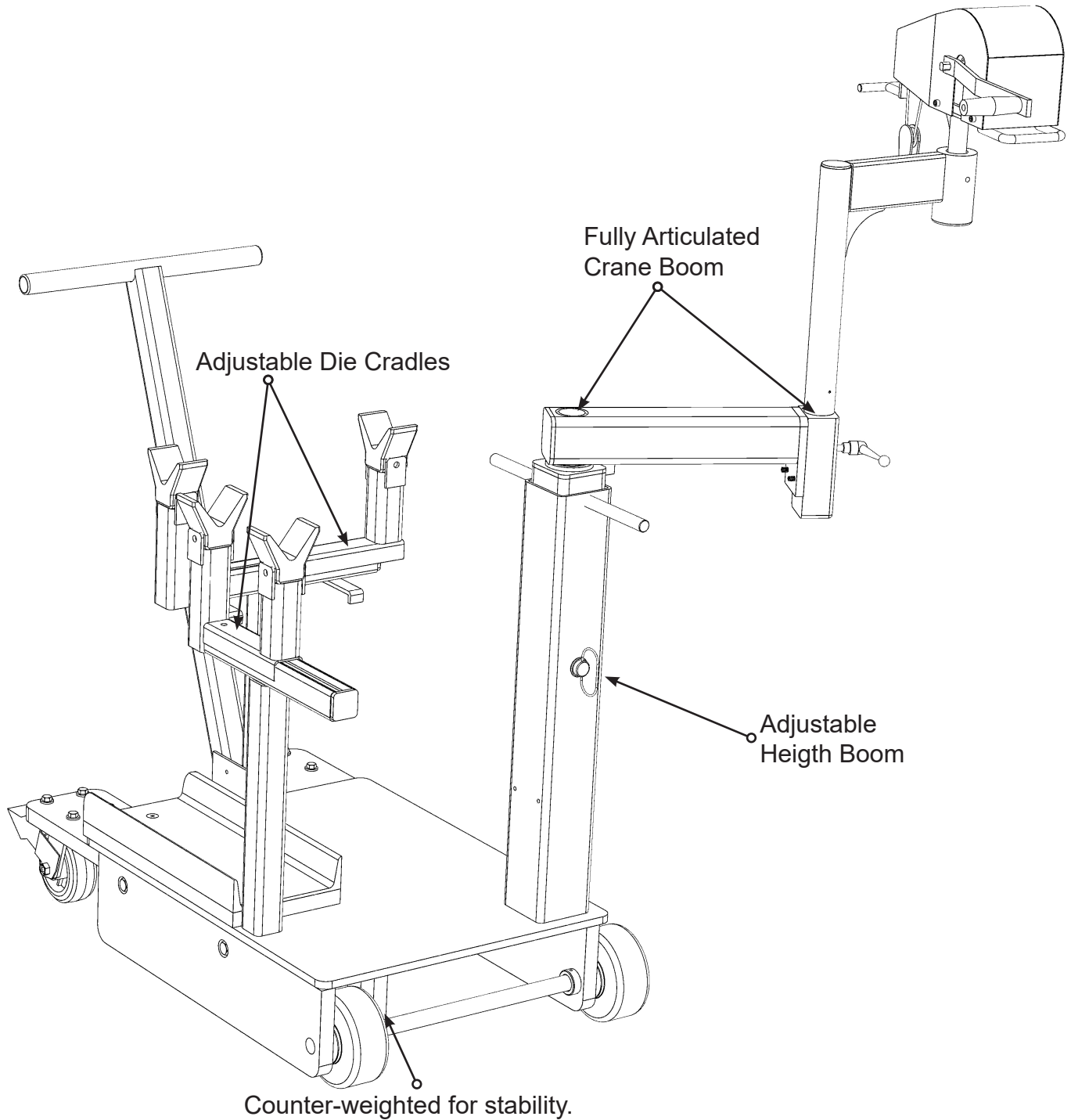


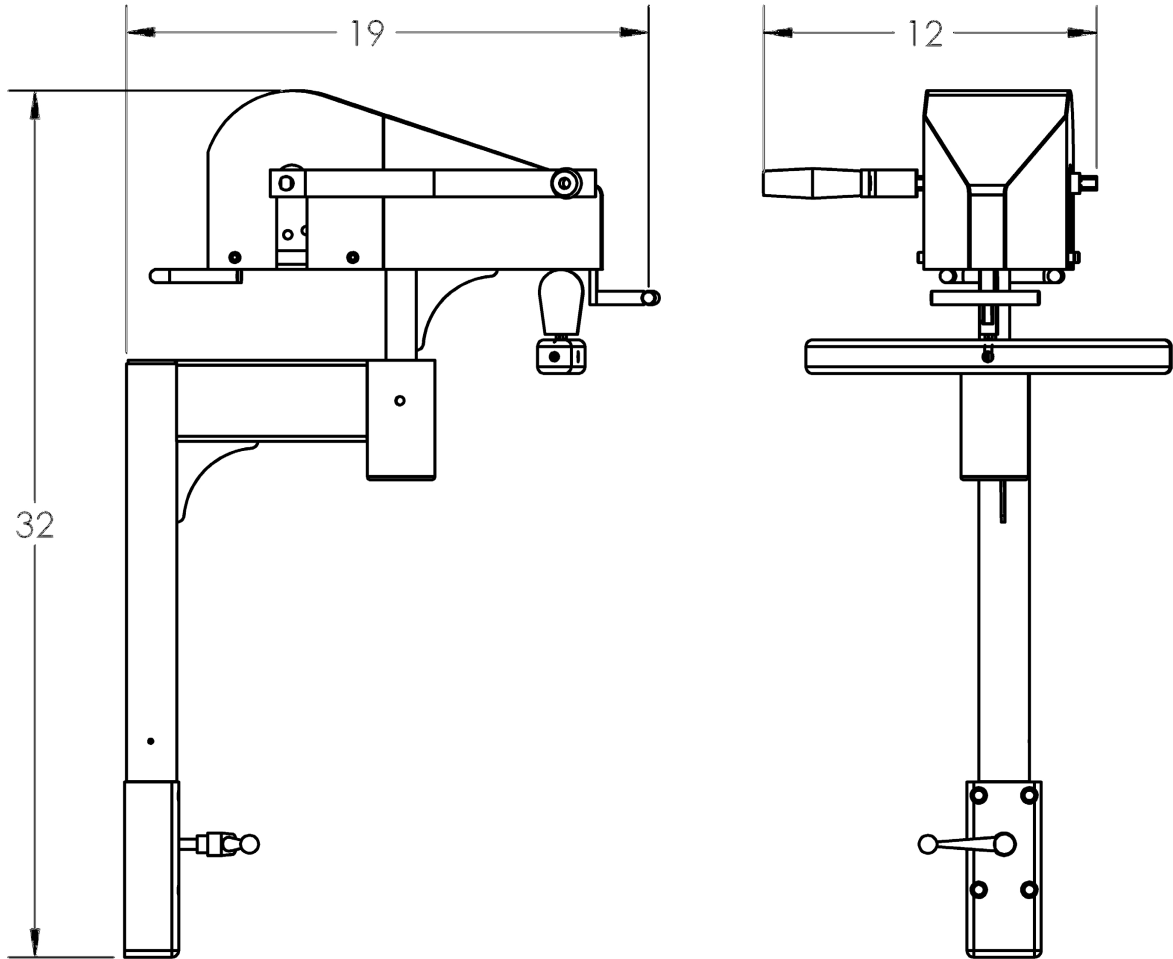


AZTECH CONVERTING SYSTEMS

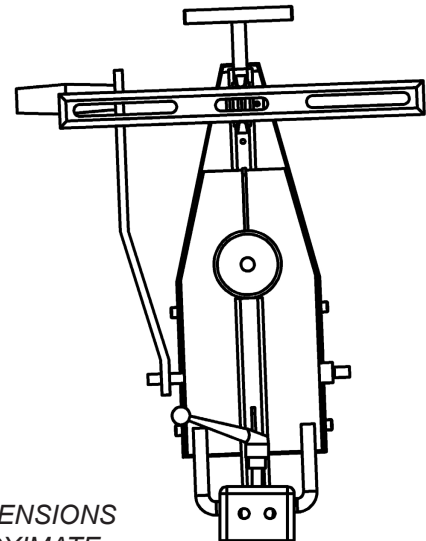
Die Lifter & Mobile Crane
USER MANUAL

1.2.2: Die Lifter Cart Features





1.2.3: Die Lifter Head Dimensions



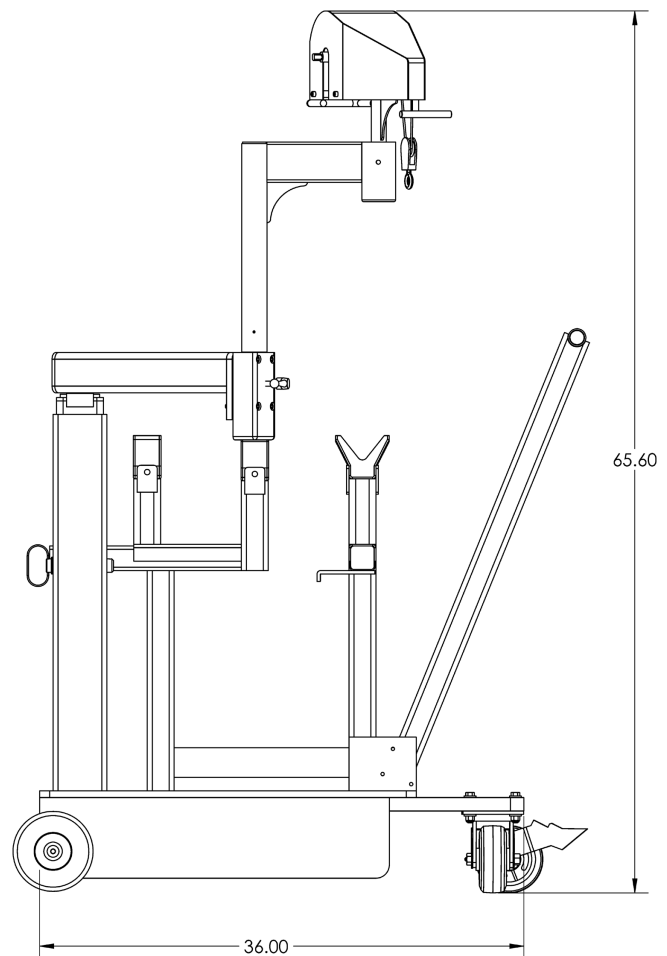
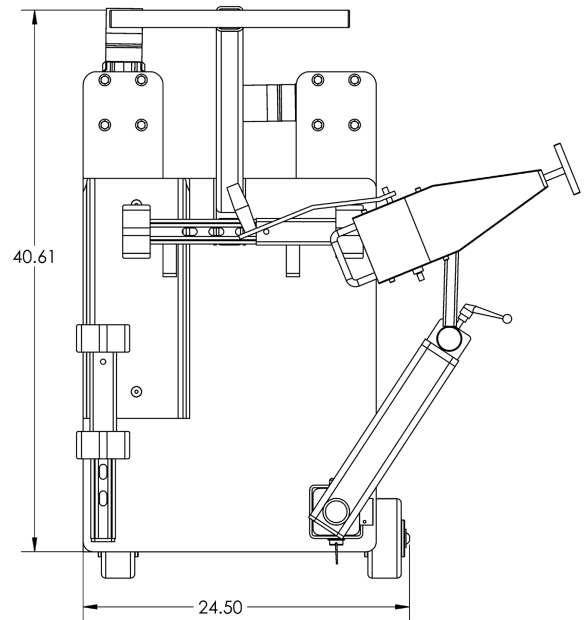
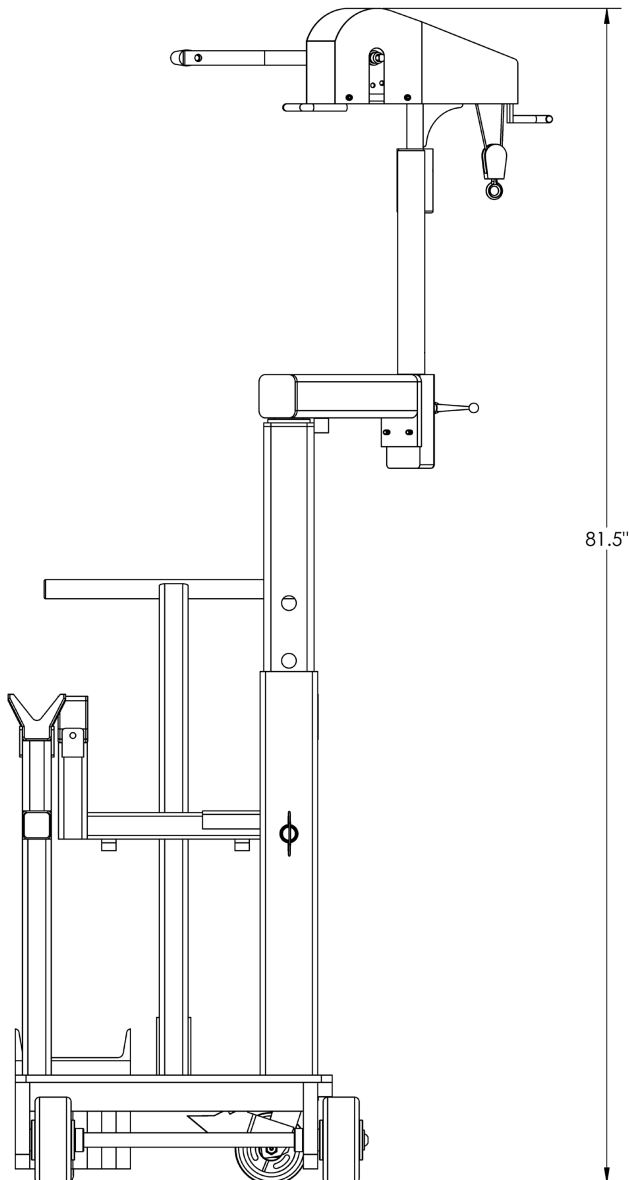
ALL DIMENSIONS
APPROXIMATE



AZTECH CONVERTING SYSTEMS

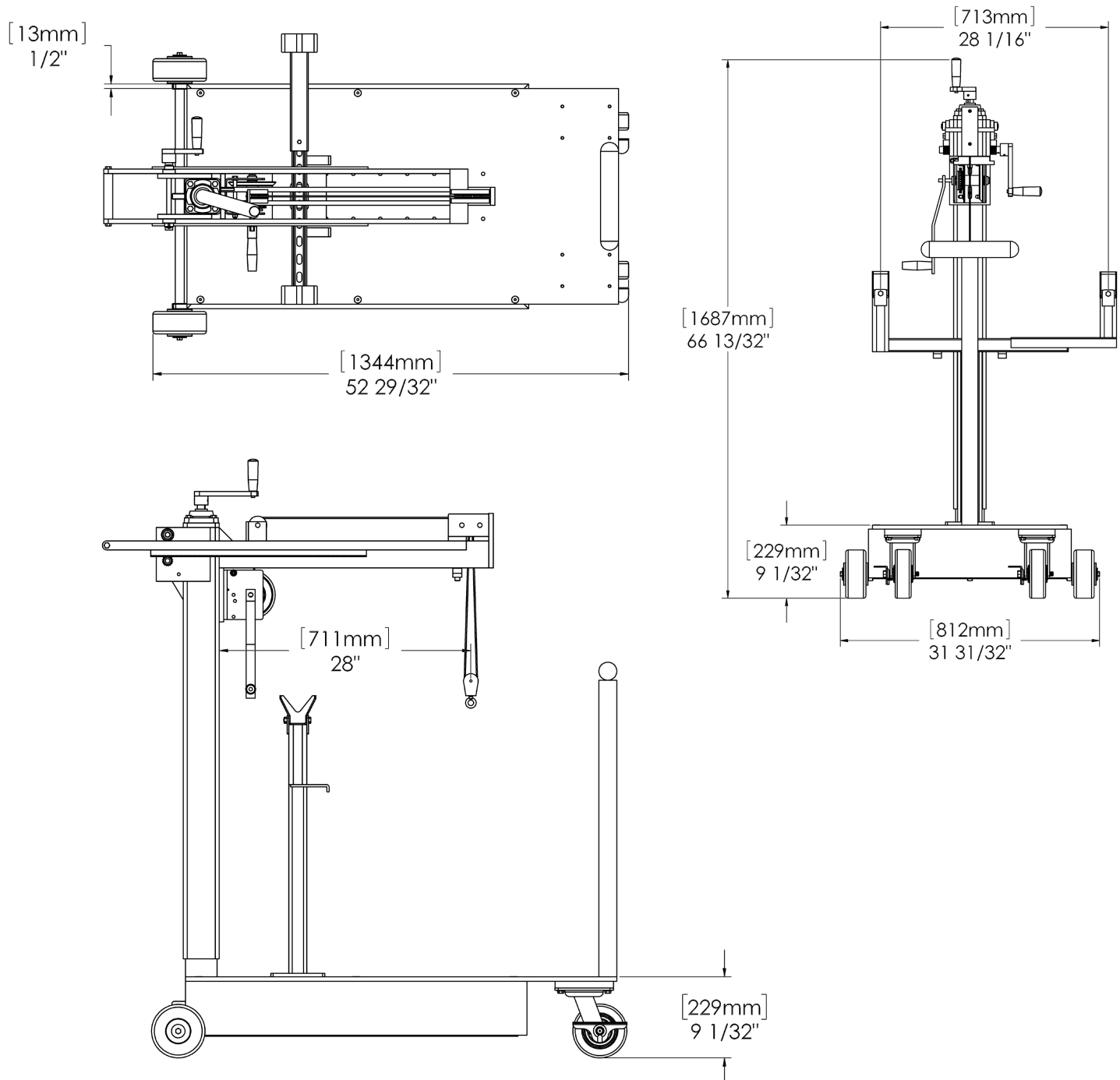
Die Lifter & Mobile Crane
USER MANUAL

1.2.4: Die Lifter Dimensions





1.2.5: Mobile Crane Dimensions





AZTECH CONVERTING SYSTEMS

Die Lifter & Mobile Crane USER MANUAL

1.3: Care and Maintenance

Both the Mobile Crane and Die Lifter are relatively maintenance free, generally only requiring periodic inspection of cable and winch assembly. Over time you may need to replace the lifting cable (AzTech part# 13914)

1.4: Safety

Never operate the die lifter without the safety cover, stand clear of the load when lifting or lowering dies, and never exceed the load limitation printed on the machine.



Section 2: Machine Installation

2.1: Unpacking and Installation

After carefully removing the die lifter from the shipping box, check to assure that all bolts are tight and that no components have come loose during shipment. If any visible damage has occurred in shipping contact AzTech Converting Systems immediately.

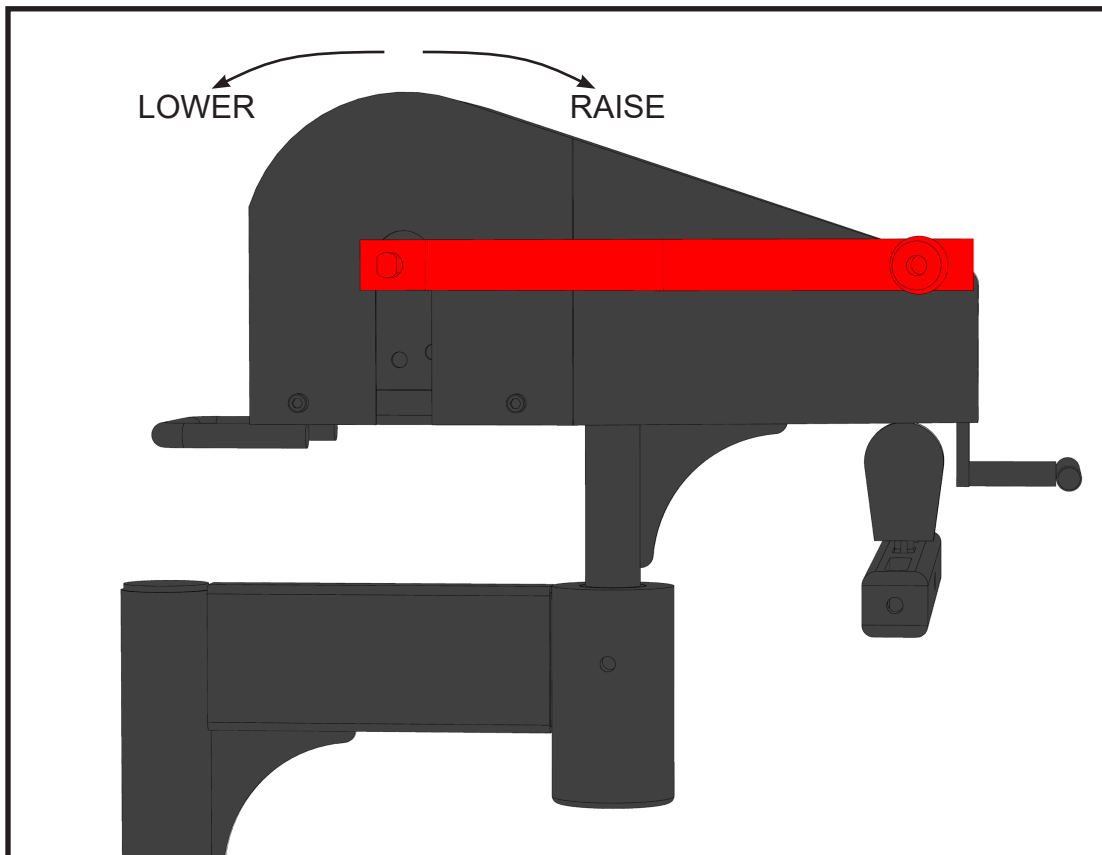
2.2: Un-crating Machine

Before lifting a load for the first time, remove the protective cover and visually inspect to make sure the cable is correctly seated.

Section 3: Die-Lift Head Operation

3.1: Raising and Lowering

To operate the die lifter turn crank handle clockwise to lift and counter clockwise to lower. When raising the lift cable make sure the winch is making a clicking sound to which denotes that it is functioning properly.





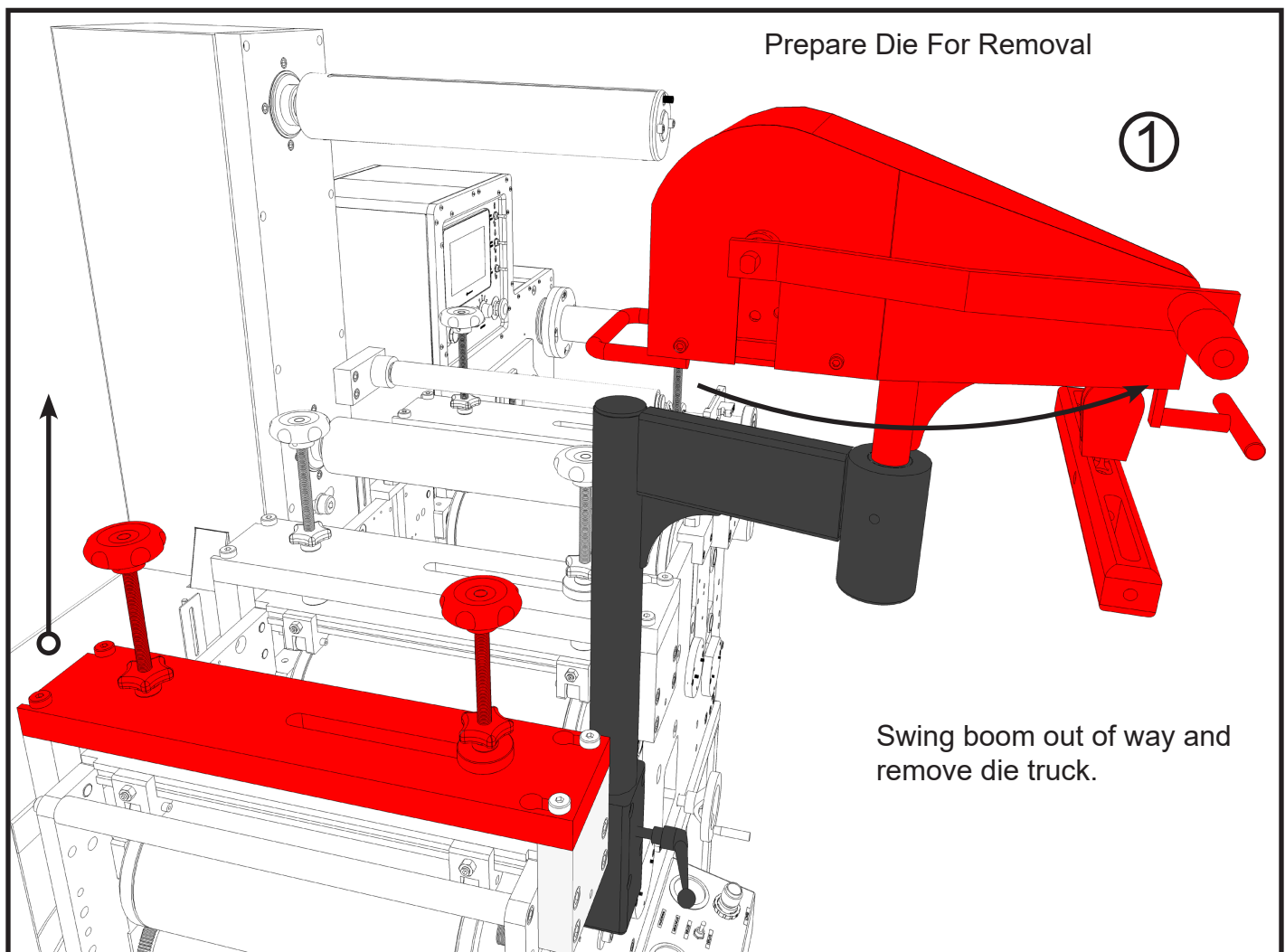
AZTECH CONVERTING SYSTEMS

Die Lifter & Mobile Crane
USER MANUAL

3.2: Removing a die

Properly prepare die for removal. Lower one of the two lifting options (die bar or lifting straps) to the die to be removed. Properly attach the preferred lifting option to the die to be removed and slowly turn winch handle clockwise lifting the die assuring die clears press wall, rotate and lower die to the floor, table, or die storage box. Remove using preferred lifting option.

Installation is the reverse of removal.



AZTECH CONVERTING SYSTEMS

Die Lifter & Mobile Crane
USER MANUAL



②

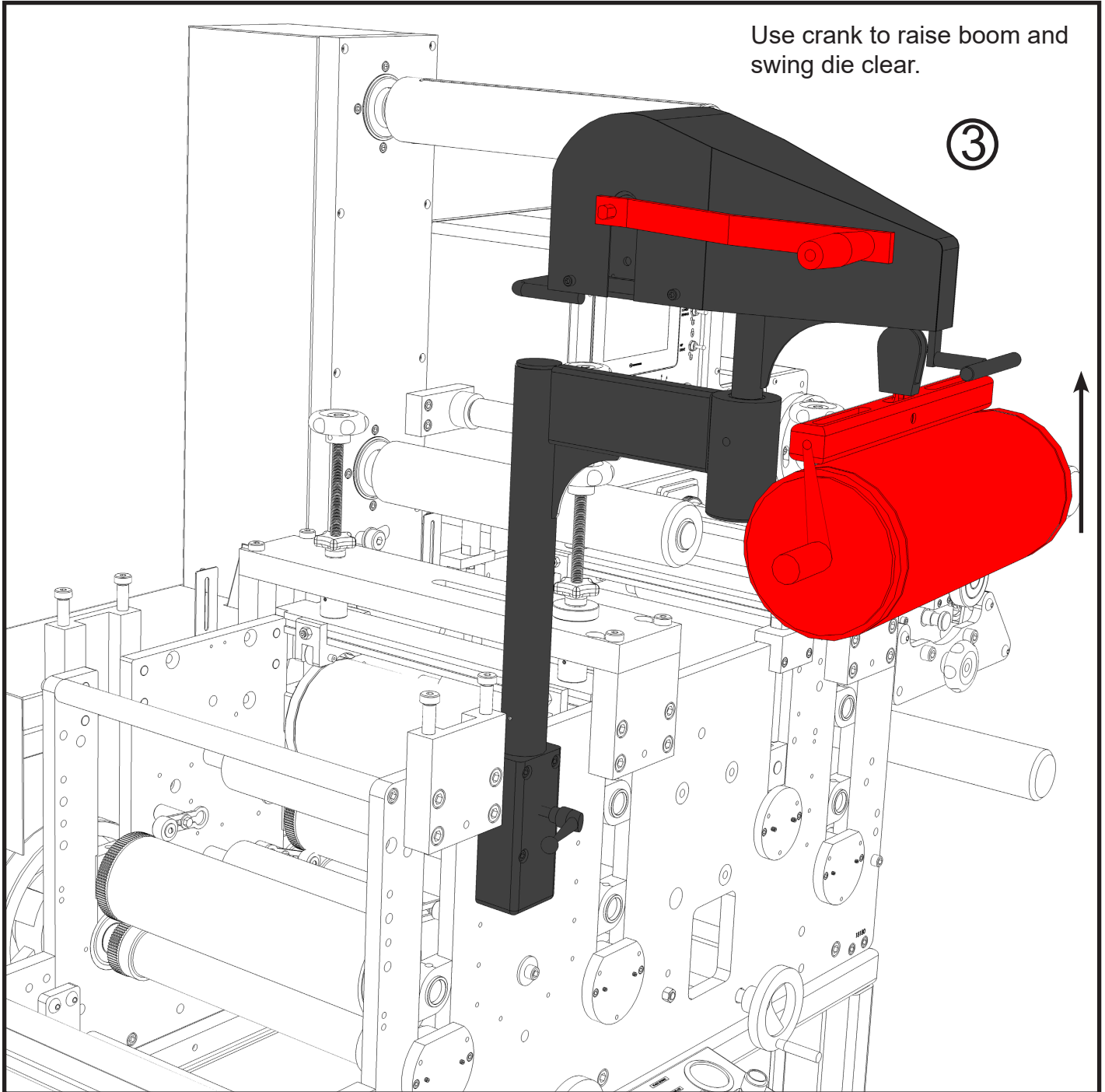
Swing boom into position.

Use crank to lower boom and attach die using preferred method.



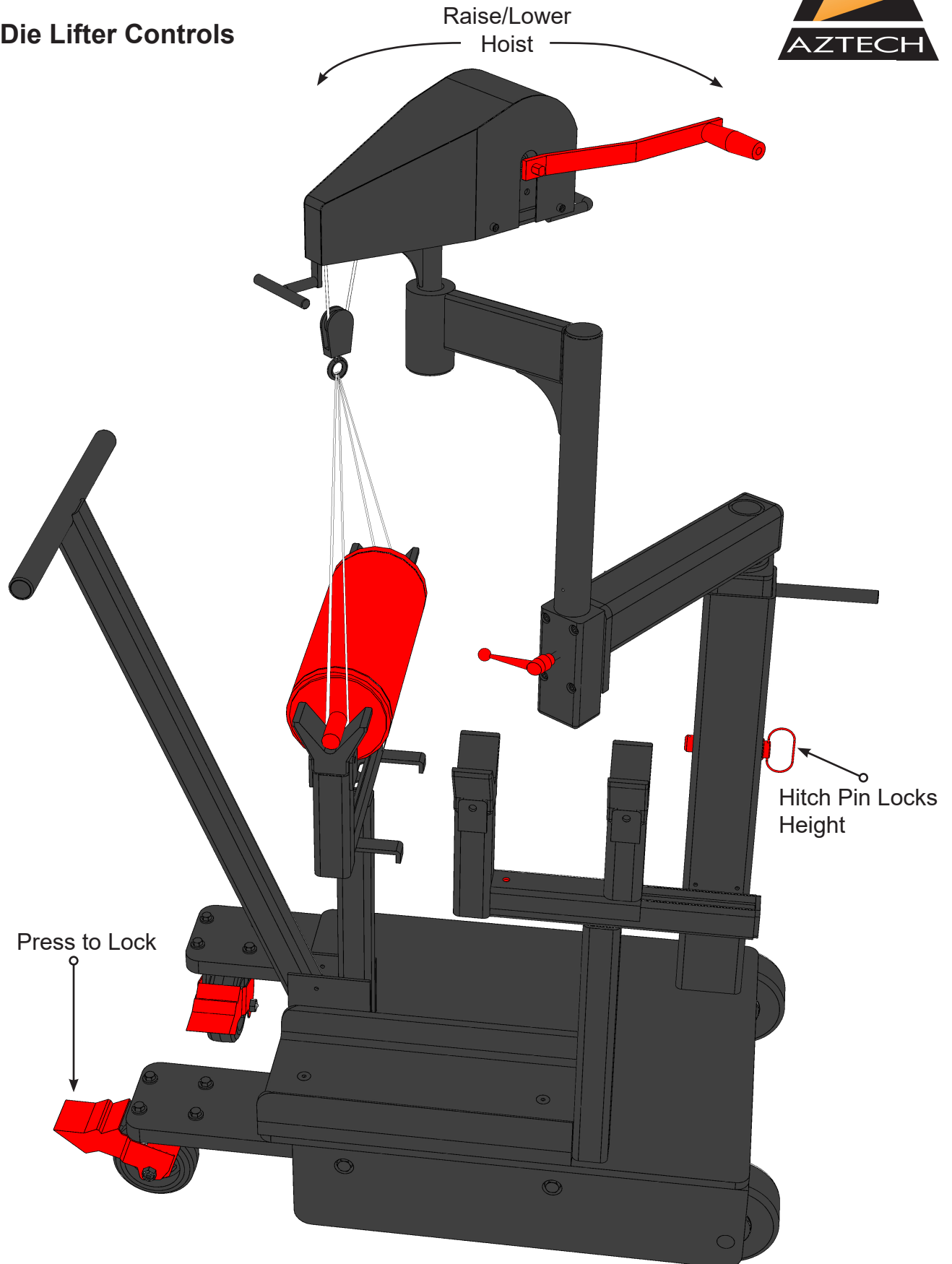
AZTECH CONVERTING SYSTEMS

Die Lifter & Mobile Crane
USER MANUAL





3.3.1: Die Lifter Controls

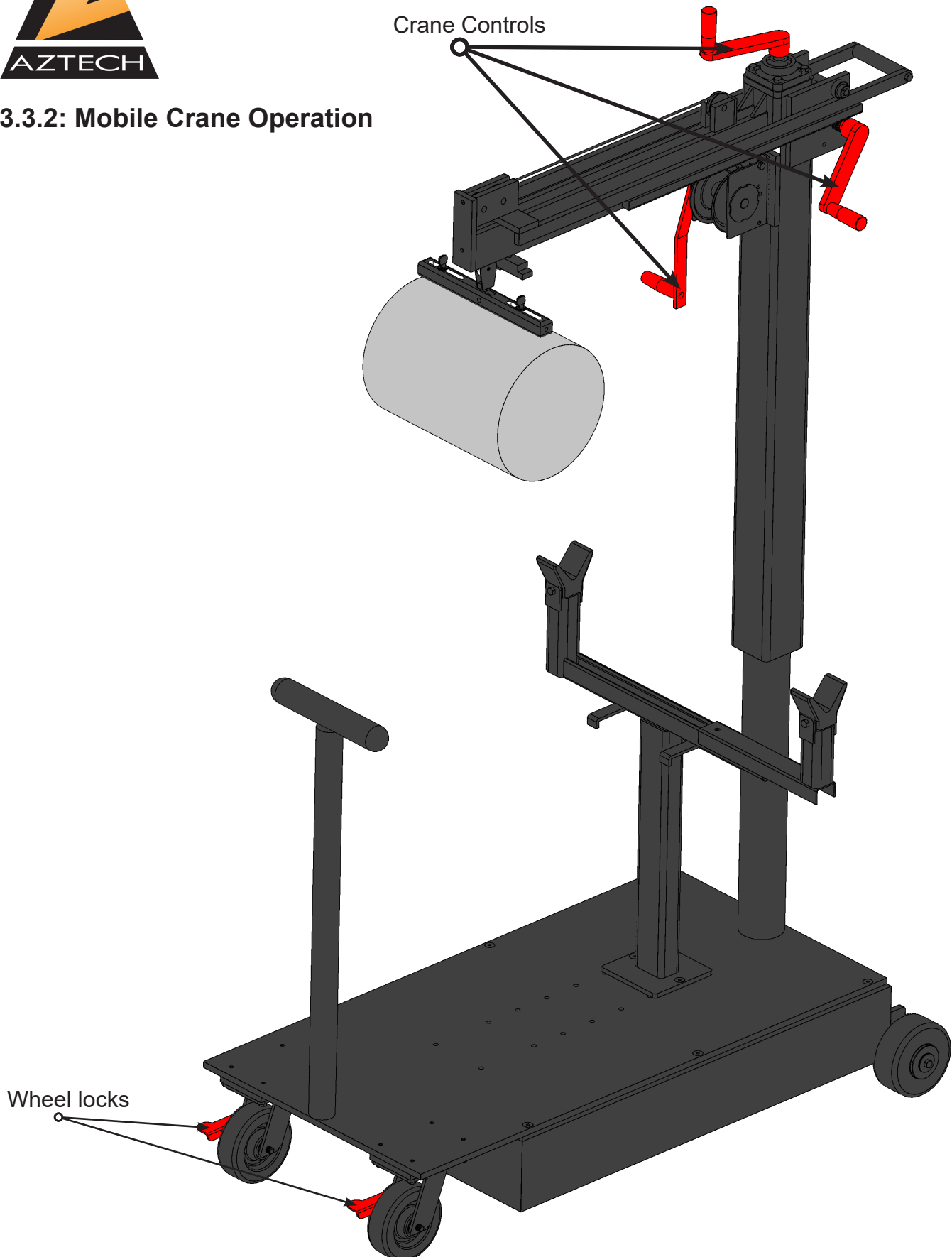




AZTECH CONVERTING SYSTEMS

Die Lifter & Mobile Crane
USER MANUAL

3.3.2: Mobile Crane Operation

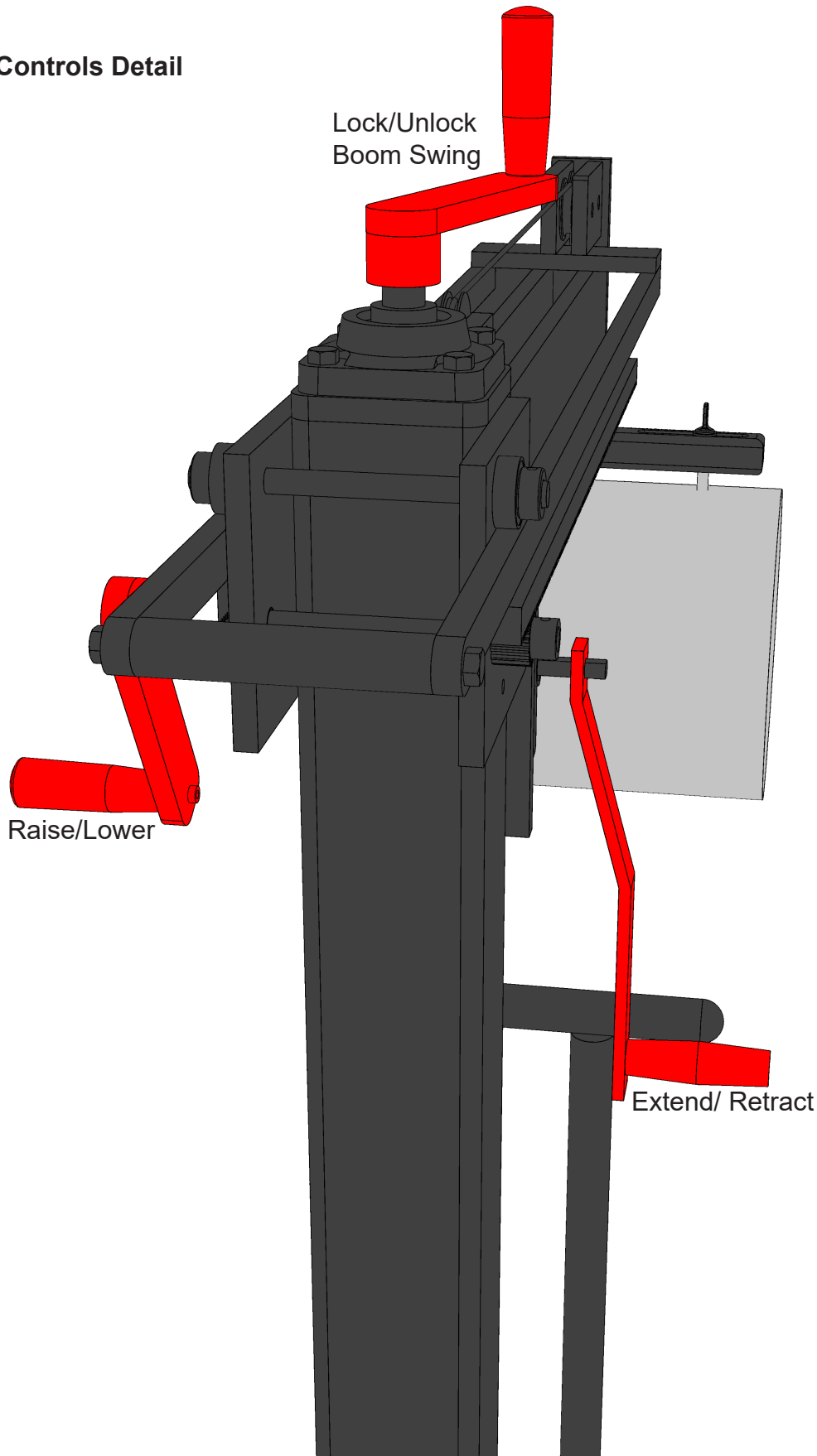


AZTECH CONVERTING SYSTEMS

Die Lifter & Mobile Crane
USER MANUAL



Crane Controls Detail





Section 4: Maintenance

Daily:

- Inspect machine for wear or obvious damage

Weekly:

- Run winch through full range of travel.
- Check cable for fraying or wear.
- Assure that the winch “clicks” at all stages of raising and lowering

Yearly:

- Replace cable if needed.
- Lubricate moving parts.

AZTECH CONVERTING SYSTEMS

Die Lifter & Mobile Crane
USER MANUAL



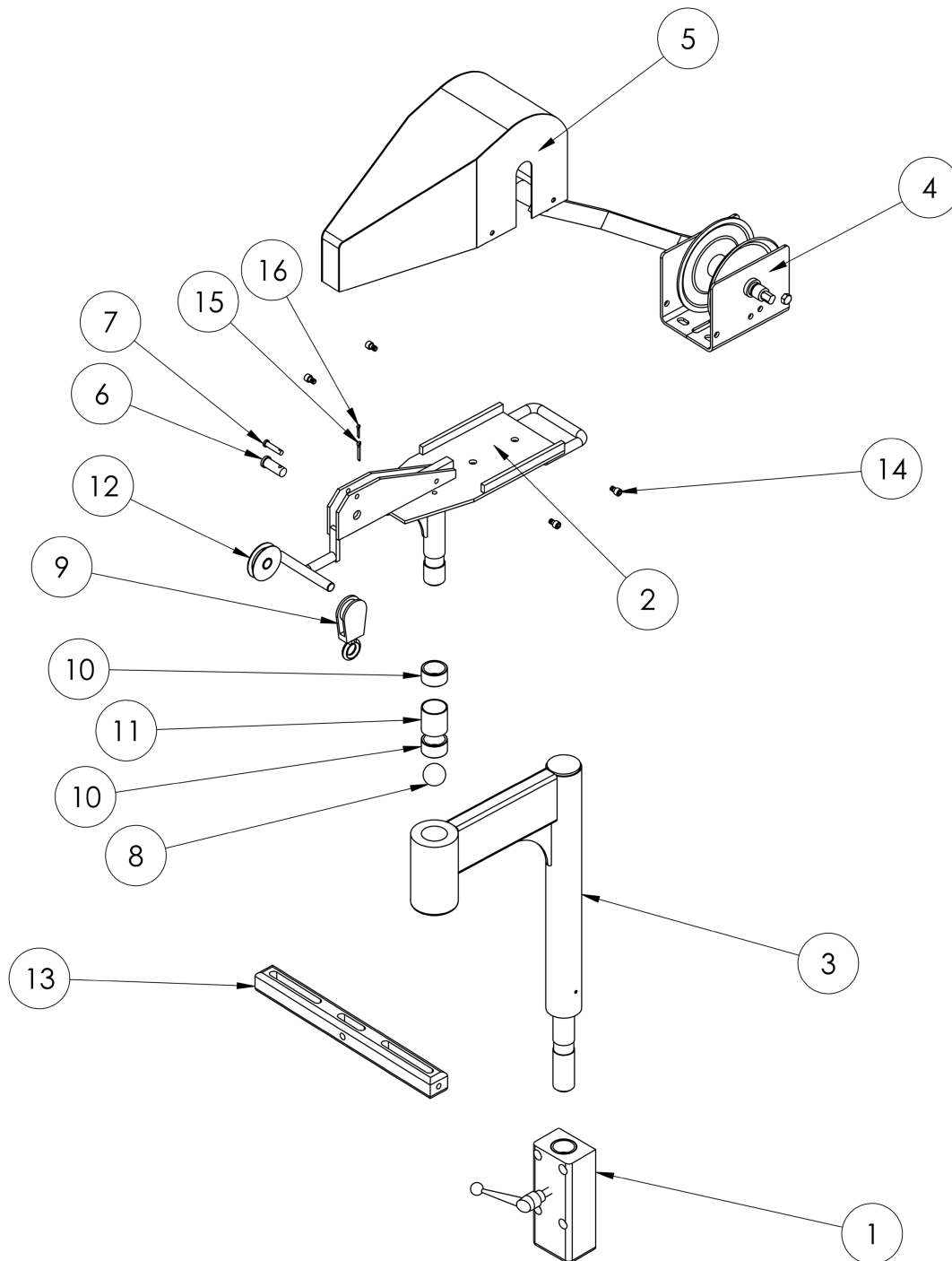
This page is intentionally left blank.
(except for this text)



AZTECH CONVERTING SYSTEMS

Die Lifter & Mobile Crane
USER MANUAL

Section 5: Station Details



AZTECH CONVERTING SYSTEMS

Die Lifter & Mobile Crane
USER MANUAL



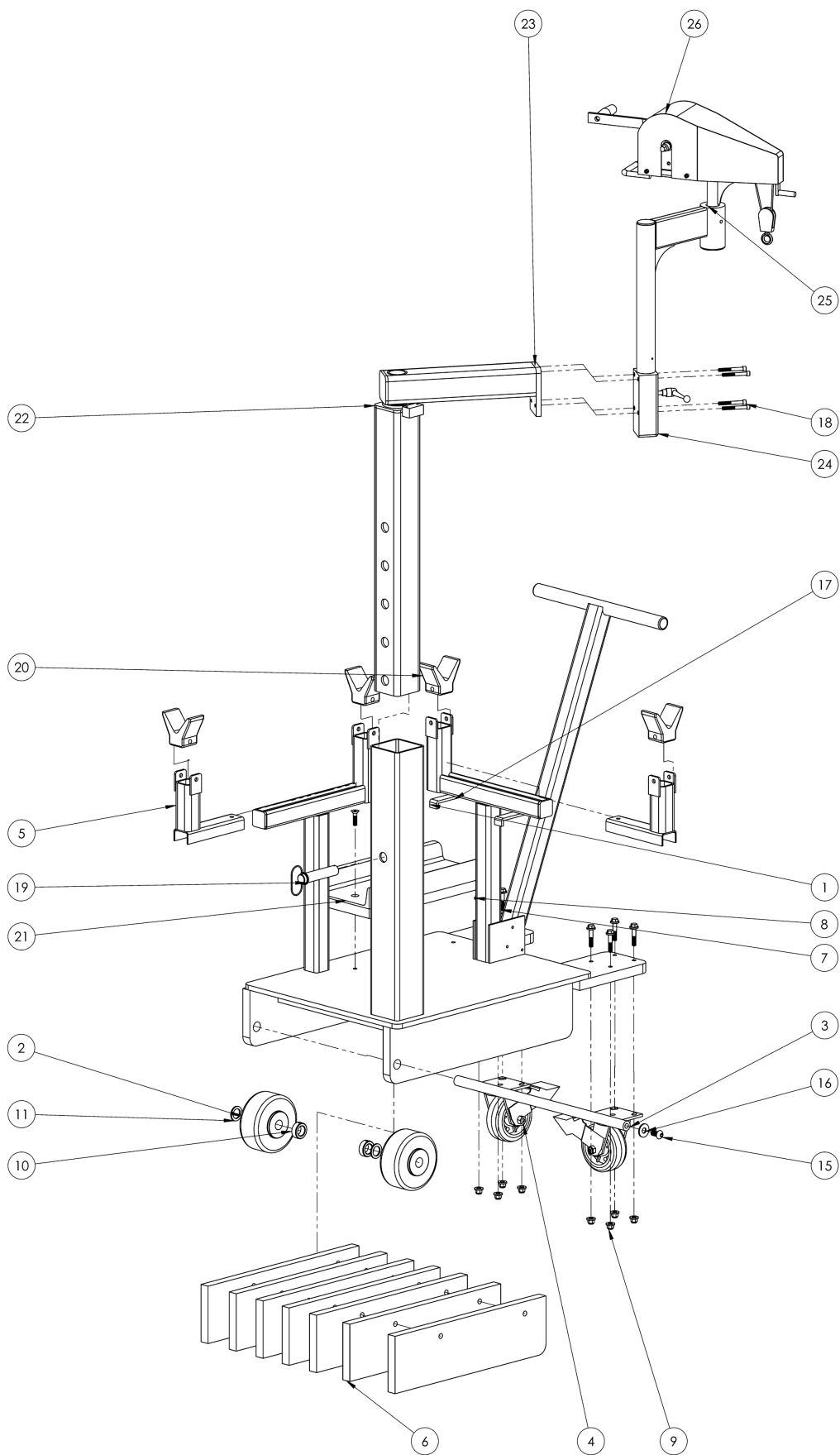
Lift Head Assembly

ITEM NO.	PART NUMBER	DESCRIPTION	Default/QTY.
1	13853	SUPPORT BRACKET, BASE, DIE LIFTER ASSEMBLY	1
2	12792	DIE LIFT, WINCH PLATE WELDMENT	1
3	13202	DIE LIFT LOWER SUPPORT ASSEMBLY	1
4	13068	K650-1491 WINCH MODIFIED	1
5	13154	DIE LIFT WINCH COVER, WELDMENT	1
6	98306A381	1/2" CLEVIS PIN, 1.25 LONG	1
7	18986	Steel Clevis Pin 1/4" Diameter, 1-1/8" Length, 15/16" Usable Length	1
8	9528K43	1 3/16" CHROME STEEL BALL	1
9	01548	PULLEY, SWIVEL	1
10	KAMB1812	BEARING, ROLLER, TORRINGTON	2
11	13208	DIE LIFT SHAFT BEARING SPACER	1
12	00208	2" O.D. x 1/2" ID PULLEY	1
13	13251	DIE LIFT BAR, 13"	1
14	SCH_~250-20 UNC_0~375_SIMP	SOCKET HEAD CAP SCREW 1*4-20 X 3/8"	4
15	18975	Zinc-Plated Steel Cotter Pin 1/8" Diameter, 1" Length	1
16	093_Cotter_pin BY 1_2		1



AZTECH CONVERTING SYSTEMS

Die Lifter & Mobile Crane
USER MANUAL



AZTECH CONVERTING SYSTEMS

Die Lifter & Mobile Crane USER MANUAL



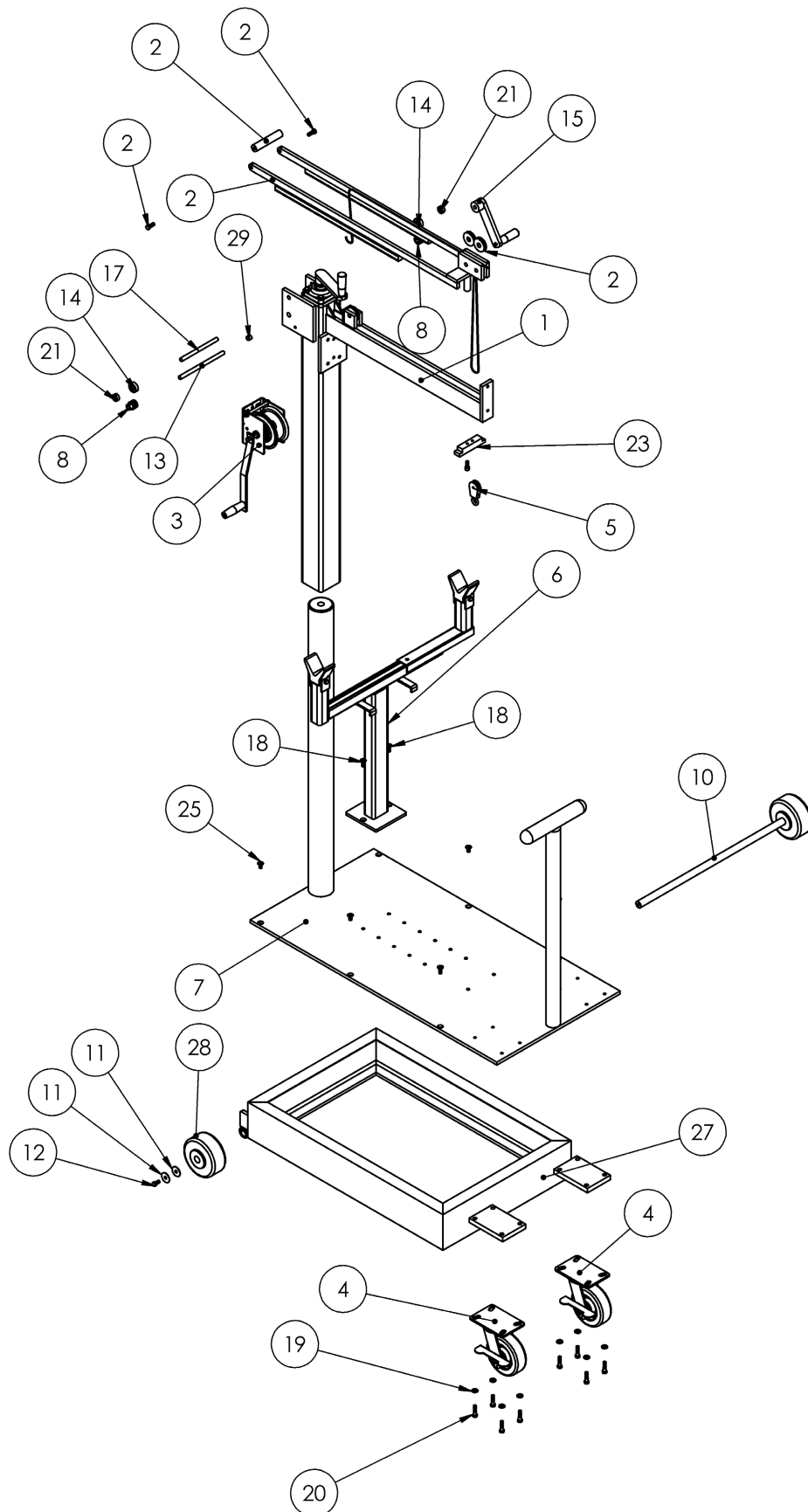
Die Lifter Assembly

ITEM NO.	PART NUMBER	DESCRIPTION	WITH DIE LIFT HEAD/QTY.
1	20761	MOBILE DIE LIFT LOWER MAST WELDMENT, MANUAL	1
2	19039	1600# LOAD, 6" WHEEL X 2-1/2 WIDE	2
3	20742	MOBILE DIE LIFT AXLE	1
4	15146	CASTER, 5 X 2 RUBBER ON IRON RIM, 030-788	2
5	20740	MOBILE DIE LIFT DIE SUPPORT SLIDER WELDMENT	2
6	20741	MOBILE DIE LIFT COUNTER WEIGHT, MANUAL	7
7	HEX BOLT_~375-16 UNC_2_SIMP	HEX BOLT 3/8-16 X 2"	8
8	WSHR A_.375 HARD	3/8" HARD WASHER	16
9	HEX NUT_.375-16 UNC_0_LOCK	NYLOCK NUT 3/8-16	8
10	1 IN SET COLLAR	1" SET COLLAR	2
11	ARBOR SHIM 1 X 1-1_2 X 1_8	1" ID X 1-1/2 OD X 1/8" THICK	2
12	HEX BOLT_~500-13 UNC_6_SIMP		2
13	WSHR A_.500 LOCK	1/2 LOCK WASHER	2
14	HEX NUT_.500-13 UNC_0_SIMP	HEX NUT 1/2-13	2
15	BTNHD_~500-13 UNC_1_SIMP		1
16	WSHR A_.500W	WASHER 1/2 W	1
17	FLH-SCH-82_~375-16 UNC_1~5_SIMP	FLAT HEAD CAP SCREW 3/8-16 X 1-1/2"	2
18	SCH_~3125-18 UNC_2~5_SIMP	SOCKET HEAD CAP SCREW 5/16-18 X 2-1/2"	4
19	COSMETIC HITCH PIN ASSY		1
20	20317	BOW GUARD	4
21	20745	MOBILE DIE LIFT, DIE BOX CHANNEL WELDMENT	1
22	13004	MOBIL PLATFORM, VERTICAL TUBE WELDMENT	1
23	13009	MOBIL PLATFORM, PIVOT ARM WELDMENT	1
24	13853	SUPPORT BRACKET, BASE, DIE LIFTER ASSEMBLY	1
25	13202	DIE LIFT LOWER SUPPORT ASSEMBLY	1
26	20738	DL 300 CRANE HEAD ASSEMBLY	1



AZTECH CONVERTING SYSTEMS

Die Lifter & Mobile Crane
USER MANUAL



AZTECH CONVERTING SYSTEMS

Die Lifter & Mobile Crane
USER MANUAL



Mobile Crane Assembly

ITEM NO.	PART NUMBER	DESCRIPTION	DRAWING VIEW/QTY.
1	12653	MOBIL CRANE,BOOM WELDMENT	1
2	12658	MOBIL CRANE, TROLLEY WELDMENT	1
3	13068	K650-1491 WINCH MODIFIED	1
4	CAS009-834 CASTER ASSEMBLY		2
5	SWIVEL PULLEY ASSEMBLY		1
6	12680	MOBIL CRANE,BASE,DIE RACK, MAIN ASSEMBLY	1
7	12695	MOBIL CRANE,BASE COVER WELDMENT	1
8	12750	MOBIL CRANE,RING GEAR, MODIFIED,1/2 BORE	2
9	1_8 CABLE DIE LIFT		1
10	12671-B	MOBIL CRANE,BASE,REAR WHEEL AXLE	1
11	3_8 FENDER WASHER	FLAT WASHER MCMMASTER CARR	4
12	HEX BOLT_~375-16 UNC_0~75_SIMP	HEX BOLT 3/8-16 X 3/4" GRADE -5	2
13	12688	MOBIL CRANE,RING GEAR, SUPPORT SHAFT	1
14	1621	BEARING	2
15	12689	MOBIL CRANE,PINION SCREW, CRANK HANDLE WELDMENT	1
16	82504366	HEAVY DUTY SWIVEL HANDLE	1
17	12693	MOBIL CRANE,BEARING, SUPPORT SHAFT	1
18	FLH-SCH-82_~375-16 UNC_1_SIMP	FLAT HEAD CAP SCREW 3/8-16 X 1"	2
19	3_8 HARD FLAT WASHER	HARD FLAT WASHER 3/8	8
20	HEX BOLT_~375-16 UNC_1~5_SIMP	HEX BOLT 3/8-16 X 1-1/2"	8
21	1HALF COLLAR	1/2" SET COLLAR	2
22	HEX BOLT_~375-16 UNC_1_SIMP	HEX BOLT 3/8-16 X 1"	4
23	12696	MOBIL CRANE, TROLLEY,LOCKIN PLATE	1
24	SCH_~375-16 UNC_1_SIMP	SOCKET HEAD CAP SCREW 3/8-16 X 1"	1
25	FLH-SCH-82_~375-16 UNC_0~75_SIMP	FLAT HEAD CAP SCREW 3/8-16 X 3/4"	6
26	12793	MOBIL CRANE, FRONT SWIVEL CASTER SPACER	2
27	12652	MOBIL CRANE,BASE WELDMENT	1
28	19039	1600# LOAD, 6" WHEEL X 2-1/2 WIDE	2
29	18979	1/2 ID X 5/8 OD X 1/2" LONG BEARING	2

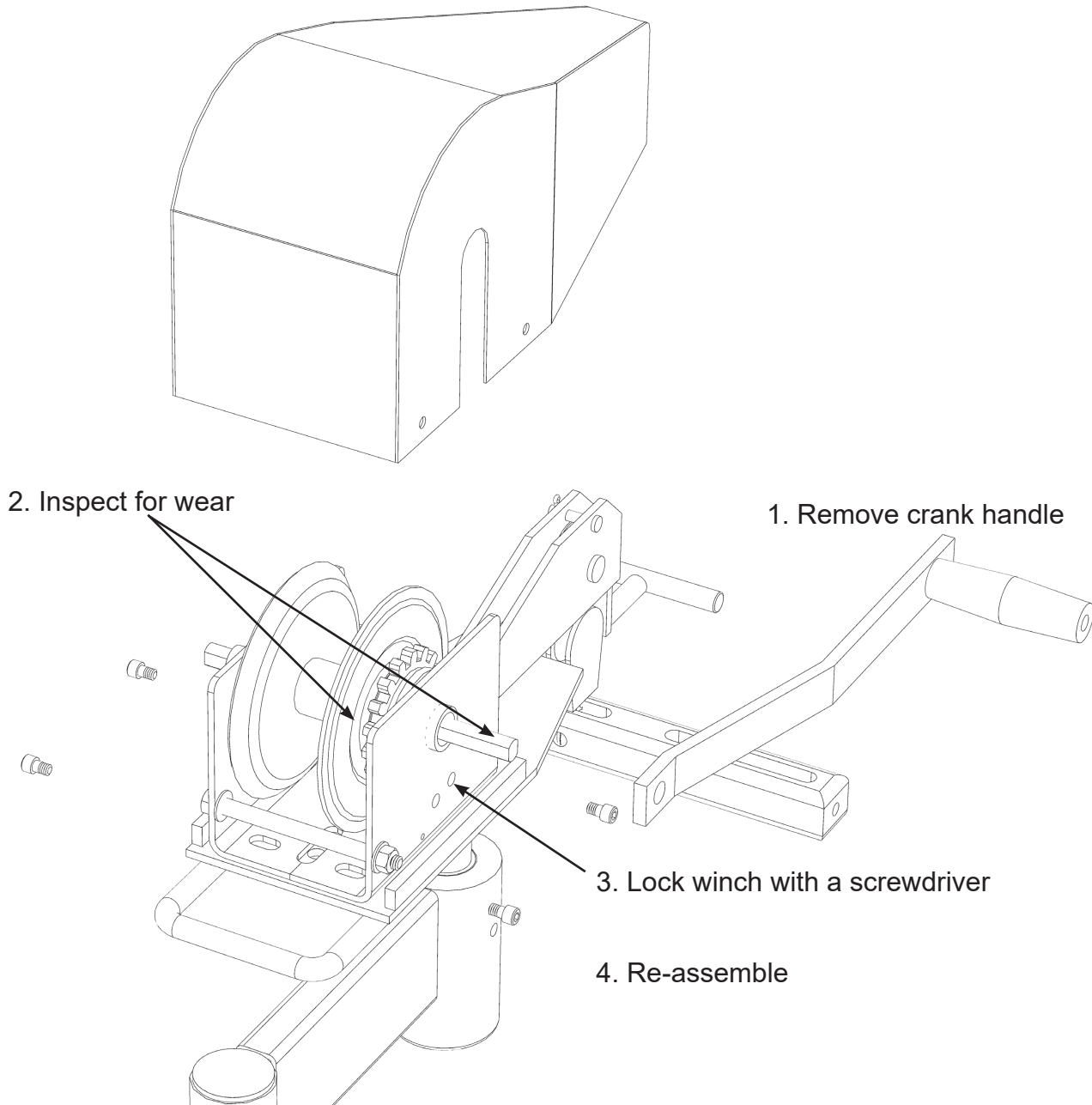


AZTECH CONVERTING SYSTEMS

Die Lifter & Mobile Crane
USER MANUAL

Section 6: Troubleshooting

If the winch no longer makes a clicking sound:



If wear is noticed, or re-tourquing does not resolve the issue, replace the winch assembly.

NOTE: Die Lifter head shown, Mobile Crane winch is similar.



Section 7: Warranties and Service

7.1: Warranties & Provisions

WARRANTIES: All equipment manufactured and sold by AZTECH Converting Systems (Seller) is warranted to be free of defective materials and workmanship under normal use and service for a period of one (1) year from the date of delivery to Buyer's premises. All commercial components not manufactured by Seller carry the original manufacturer's warranty. At Seller's discretion, Seller may provide on-site warranty service for a period of ninety (90) days from the aforementioned date.

REMEDIES If within the Warranty Period any such Equipment is proven to Seller's satisfaction to be defective in either material or workmanship, Seller, at its sole discretion, shall (a) repair or replace defective parts on the Equipment at Seller's cost, or (b) grant a reasonable allowance on account of such a breach. If within the Warranty Period the Seller receives notice from Buyer of defects in parts or materials. Seller will ship (ground, prepaid) replacement parts) and invoice Buyer for the full cost of the replacement parts). Buyer will receive a Return Authorization (RA) from seller, and return defective parts or materials to Seller, who at its sole discretion shall determine whether defective parts or materials are or are not subject to exclusion from this warranty as provided herein. Any defective parts or material not excluded from the Warranty Period will then be fully credited to Buyer.

EXCLUSIONS

THE FOLLOWING ITEMS ARE EXCLUDED FROM THIS WARRANTY:

- Defects or damage caused by careless or improper use.
- Parts that need periodic replacement from wear during normal operation.
- Routine maintenance and adjustment.
- Failure or damage caused by improper installation or inadequate maintenance by Buyer.
- Failure or damage caused by equipment modifications by Buyer.
- Equipment damage resulting from an accident, or abnormal conditions of operation.

DISCLAIMER OR WARRANTY

NO OTHER WARRANTY IS EXPRESSED OR IMPLIED INCLUDING WARRANTIES OF MERCHANTABILITY AND FITNESS FOR ANY PARTICULAR PURPOSE. SELLER IS NOT LIABLE FOR INCIDENTAL OR CONSEQUENTIAL DAMAGE SUCH AS, BUT NOT LIMITED TO LOSS IN PROFITS, LOSS OF USE OF EQUIPMENT, OR INCREASED IN OPERATING COSTS OR EXPENSES.

7.2: Technical Service

In the event that your lifter is not functioning properly or if you have any technical questions, an AZ-TECH Technical Service representative is available to assist you. Contact information is as follows:

Phone: 1-480-951-8351
1-800-829-8351
Fax: 1-480-998-5409
E-Mail: techservice@aztechconverting.com