



AZTECH CONVERTING SYSTEMS

212 W Lodge Drive

TEMPE, AZ 85283

PHONE (480) 951-8351

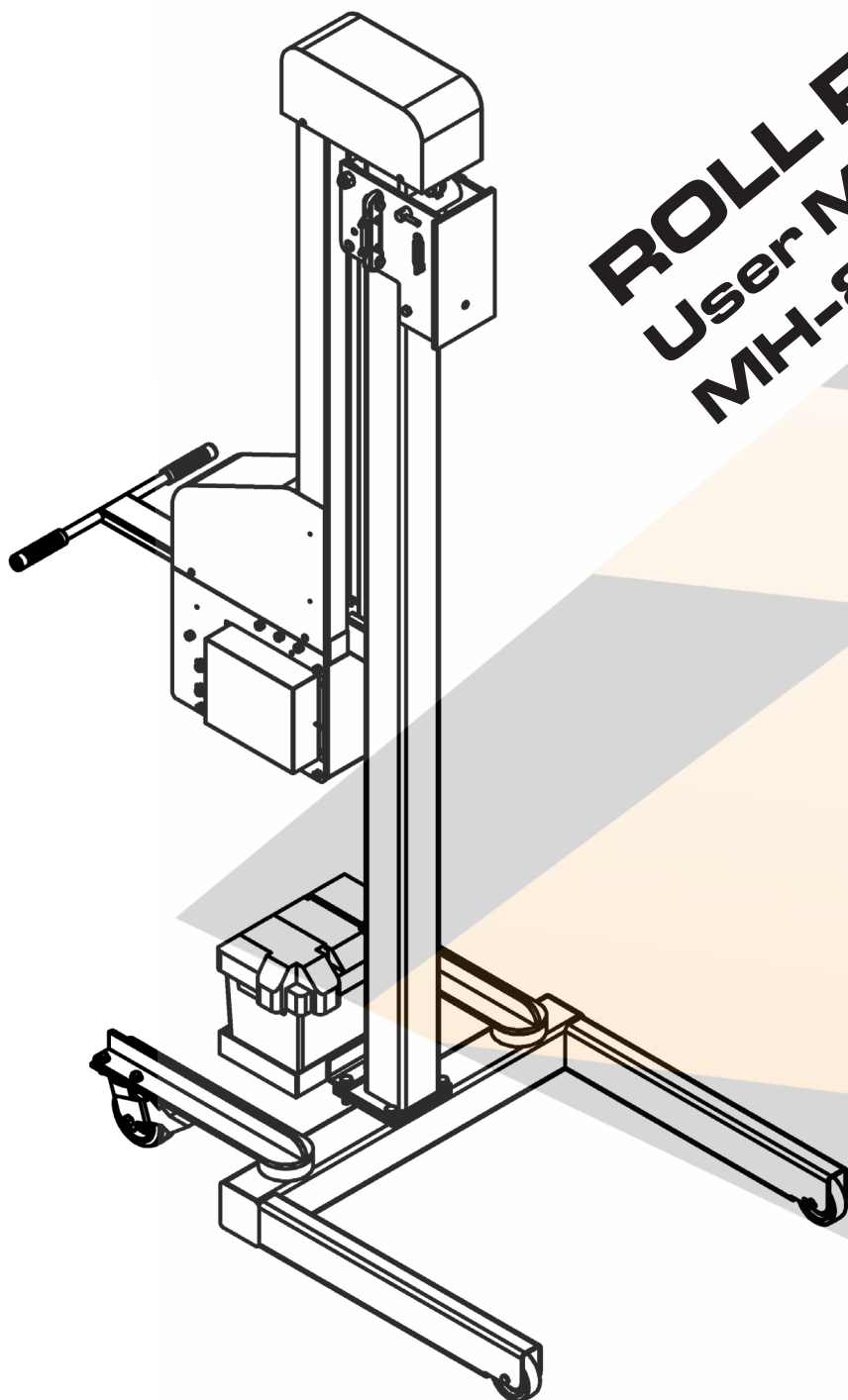
FAX (480) 998-5409

www.aztechconverting.com

ROLL RUNNER

User Manual

MH-800E





AZTECH CONVERTING SYSTEMS

**MH-800
USER MANUAL**

TABLE OF CONTENTS

SECTION 1: GENERAL INFORMATION	1-4
SECTION 2: MACHINE SETUP	4
SECTION 3: MACHINE OPERATION	5-9
SECTION 4: MAINTENANCE AND REPAIRS	10
SECTION 5: STATION DETAILS	11-14
SECTION 6: REPLACEMENT PARTS	15
SECTION 7: WARRANTIES AND SERVICE	16



Section 1: General Information

1-1: Introduction

The AZTECH RollRunner Model MH-800 Roll Handling Cart is designed and manufactured to help reduce workplace injuries by performing various material handling functions utilizing AZTECH's innovative quick-change attachment system. The RollRunner with its all-steel construction and simplistic design will prove to be an invaluable product for your work environment and is sure to provide your company many years of safe, dependable service.

1-2: Machine Information and Specifications

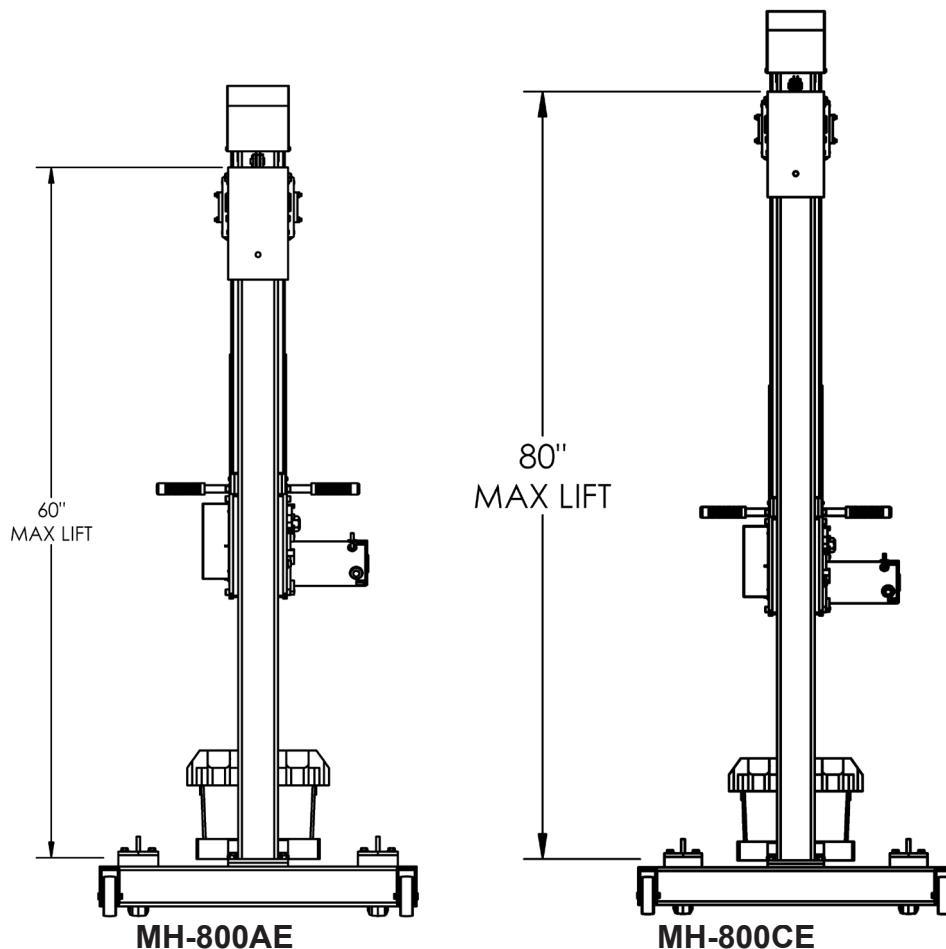


Fig. 1-1: MAX LIFT HEIGHTS

The MH-800 operates on a cable and winch lift system. The lift height is limited by the height of the upright boom. Currently, two different lift heights are offered. They are the 800A and 800C. Their respective maximum lifts are shown in Fig. 1-1.

The 800A and the 800C have similar footprints.



AZTECH CONVERTING SYSTEMS

MH-800E USER MANUAL

MH-800AE

MAX LOAD: 800 LBS (362 kg)

MAX Lift Height: 63 (160 cm)

Dimensions: 28.25 X 34 X 57.25

All dimensions are inches unless otherwise specified

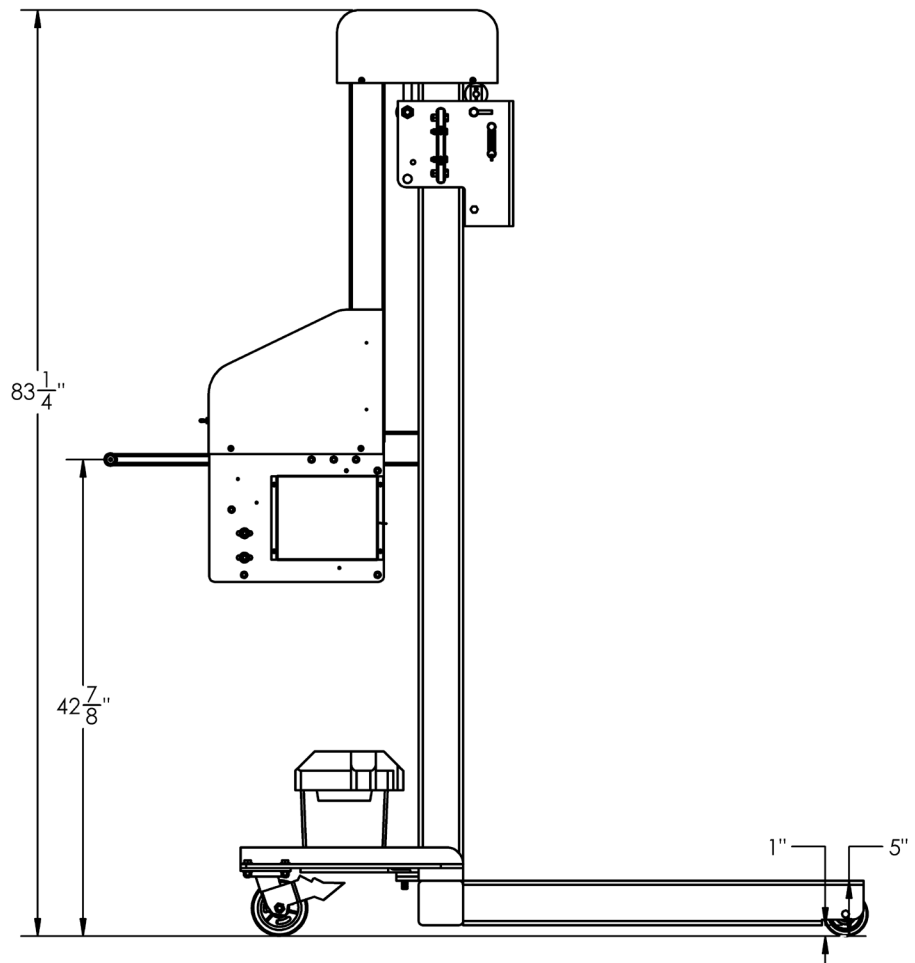
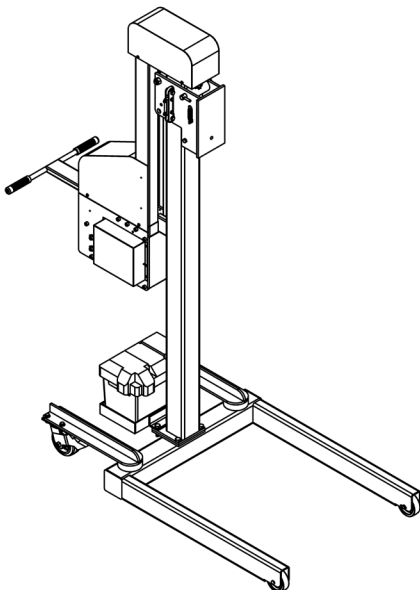
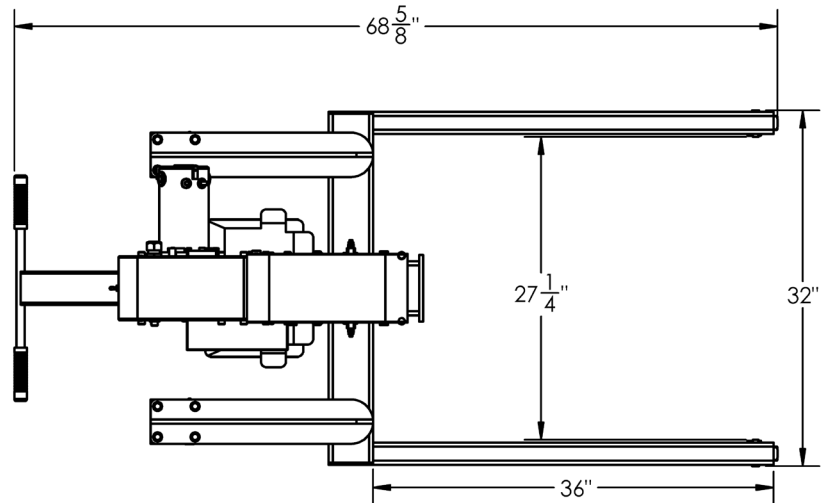
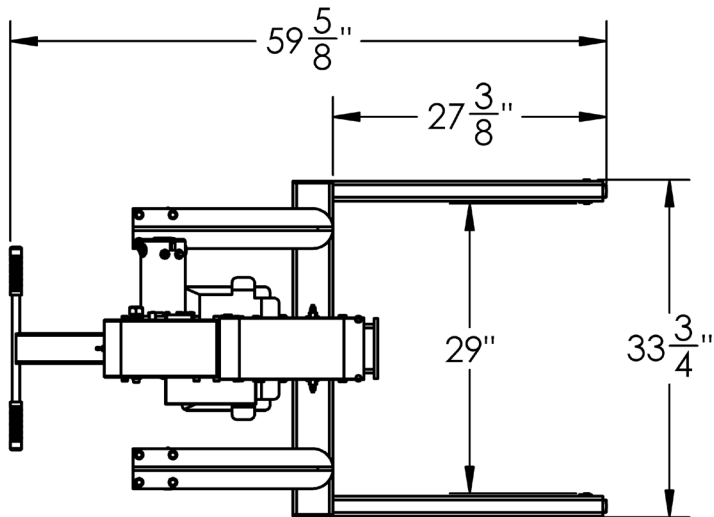


Fig. 1-2: THE MH-800AE

AZTECH CONVERTING SYSTEMS

MH-800E USER MANUAL



MH-800CE

MAX LOAD: 800 LBS (362 kg)

MAX Lift Height: 80 (203 cm)

Dimensions: 28.25 X 34 X 50.75

All dimensions are inches unless otherwise specified

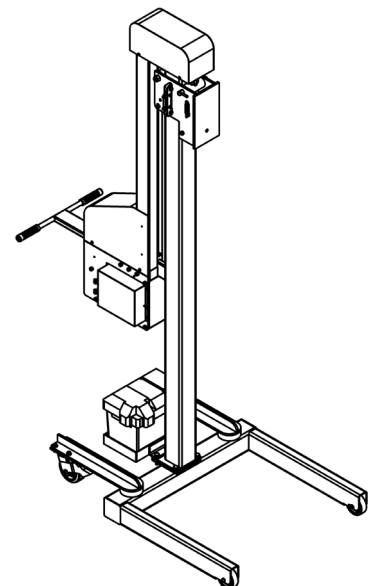
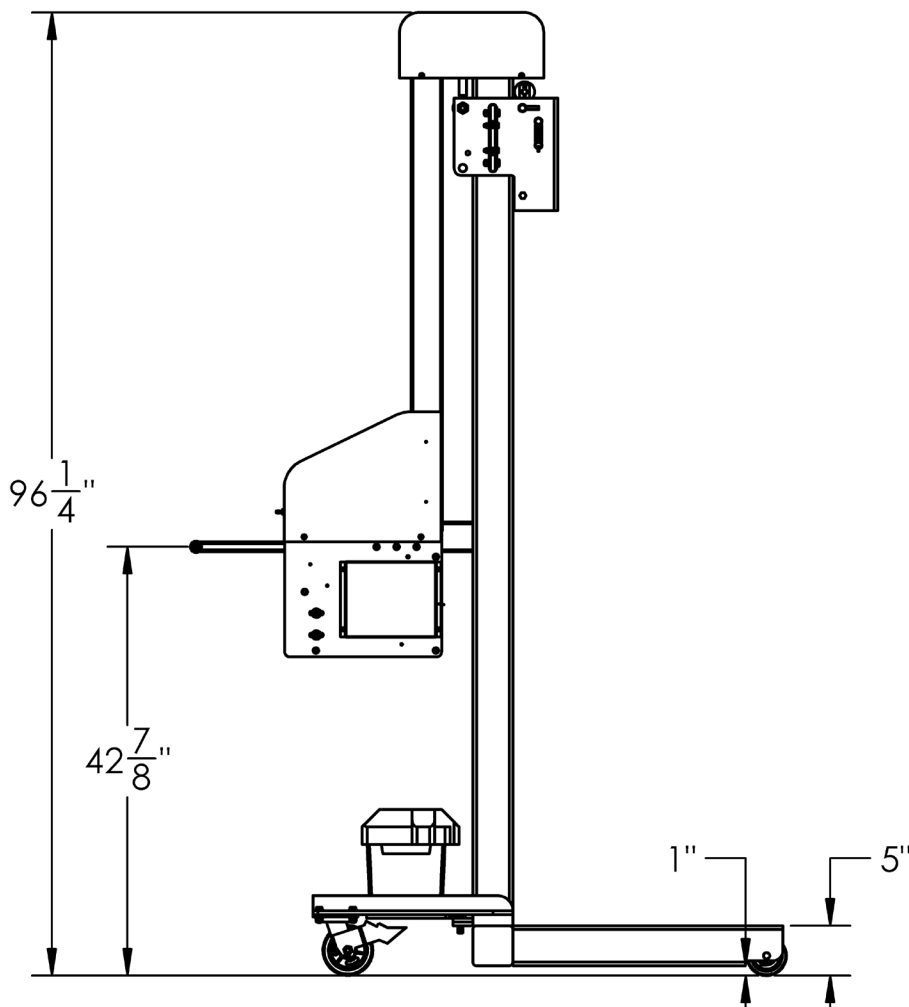


Fig. 1-3: THE MH-800CE



AZTECH CONVERTING SYSTEMS

MH-800E USER MANUAL

1-3: Care and Maintenance

The RollRunner is relatively maintenance free, generally only requiring periodic inspections. Over time, you may need to replace the lift cable, which is simply performed by removing old cable and inserting the new cable and crimping at the open end.

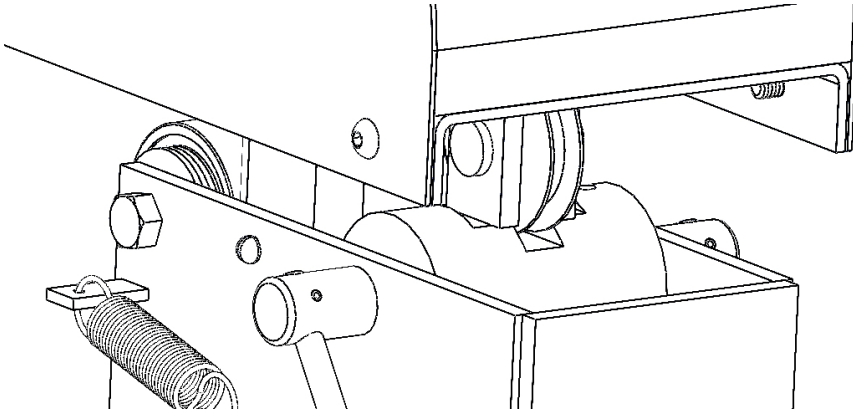


Fig. 1-4: SAFETY BRAKE DETAIL

1-4: Safety

The RollRunner is equipped with a safety brake which will automatically engage in the event of lift cable breakage. (See Figure 1-5)

NEVER:

- Operate the ROLL RUNNER without the safety cover.
- Lift load over people
- Exceed the 800 LB weight limitation
- Use the ROLL RUNNER to transport people

Section 2: Machine Setup

2-1: Uncrating & Inspection

After carefully removing your RollRunner from the crate, check to assure that all the bolts are tight and that no components have come loose during shipment. Carefully inspect all 4 wheels making sure they roll freely and are free of damage. If any visible damage has occurred in shipment, contact AZTECH immediately.

2-2: Safety Brake Inspection

As noted in 1-4, your RollRunner is equipped with a safety brake which will prevent a load

from falling in the event of a cable break. To assure it is working properly, check to see that the 2 springs that activate the safety brake have tension and are attached at both ends.

2-3: Winch & Cable Inspection

Before lifting a load for the first time, remove the protective winch cover and visually inspect to assure that the cable is seated properly in the grooves of the pulleys.

2-4: Battery Connection

The RollRunner's motorized

lift utilizes a 12 Volt deep-cycle battery (not provided) which may be purchased at virtually any automotive or department store. To connect the battery, simply connect red cable to the positive (+) terminal, and the other cable to the negative (-) terminal. The RollRunner comes with an auxillary battery charger and will need to be charged periodically dependant on use. Generally, the higher the cold cranking amps (CCA) the battery is rated at, the less frequently it would need to be charged.



Section 3: Machine Operation

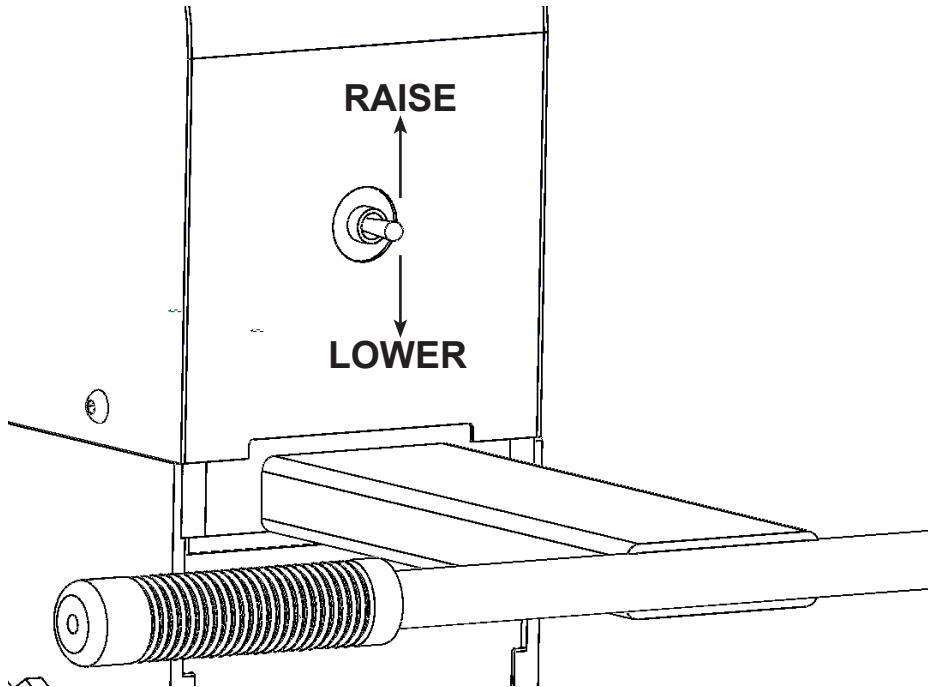


Fig. 1-5: LIFT OPERATION

3-1: Operating Lift

To operate the motorized lift, raise switch to "UP" position to raise the load, and lower switch to "DOWN" position to lower the load (see Figure 1-5). The RollRunner is equipped with upper and lower limit switches which will automatically shut down the machine when the load reaches its highest and lowest points of travel.

3-2: Rear Wheel Safety Brakes

The RollRunner is equipped with back wheel safety brakes which are to be used to hold the cart in place once in desired position and as a safety feature to keep the cart from rolling while in the stationary position. To operate, simply press handle down and snap into place to activate brake, and lift to de-activate brake.

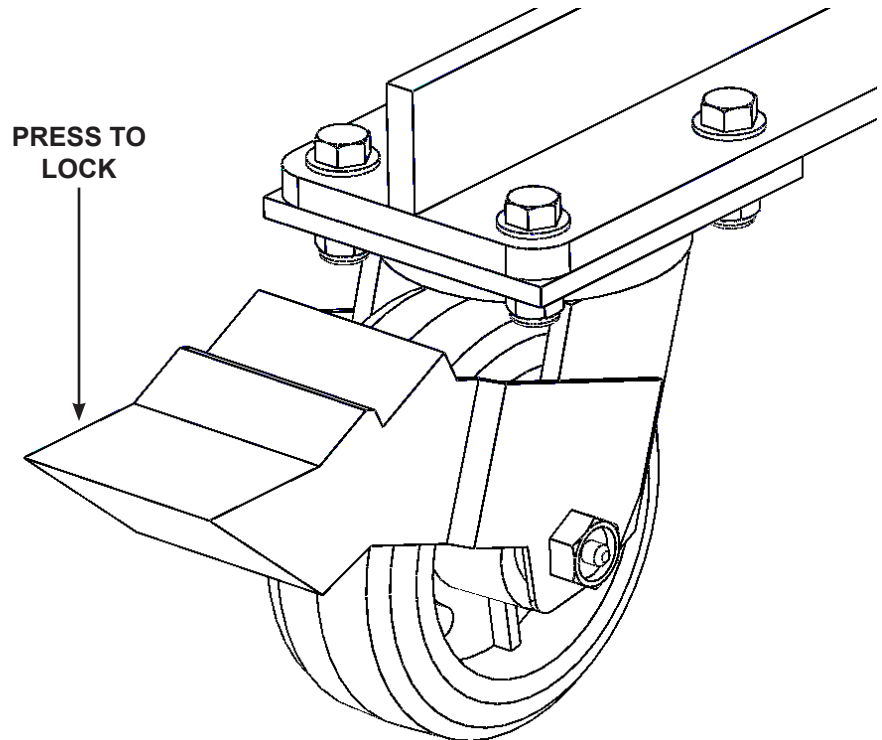


Fig. 1-6: SAFETY BRAKE



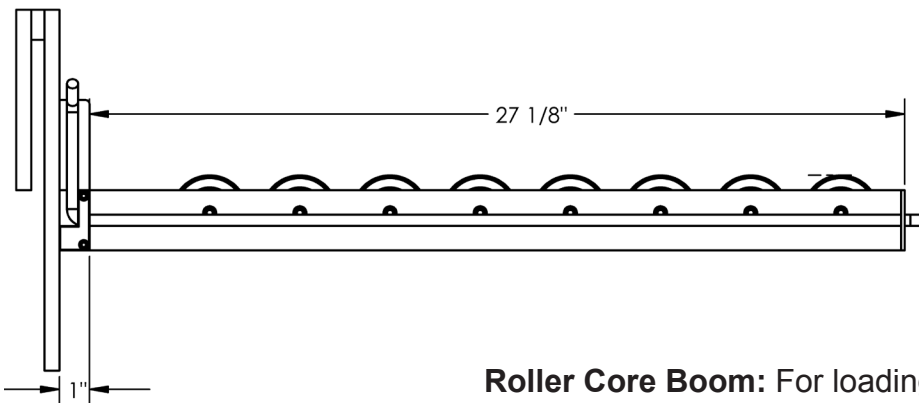
AZTECH CONVERTING SYSTEMS

MH-800E USER MANUAL

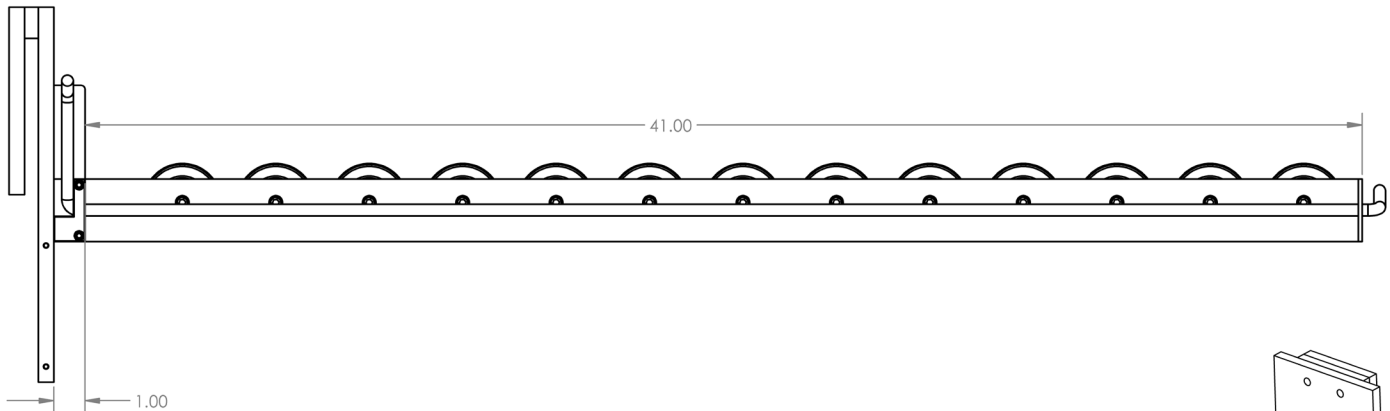
3-3 Changing Attachments

The Rollrunner utilizes a EZ Change Attachment System which makes it capable of performing numerous tasks. To change attachments, simply lift attachment off the trolley and lower into place making certain that retainer tab slides into the Slot at the top of the trolley.

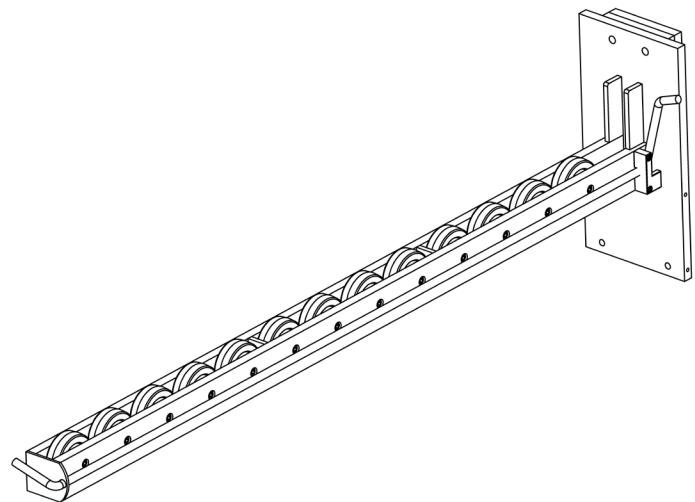
3-4: Available Attachments



Roller Core Boom: For loading and unloading rolls from the side position by supporting the roll through the roll's core.

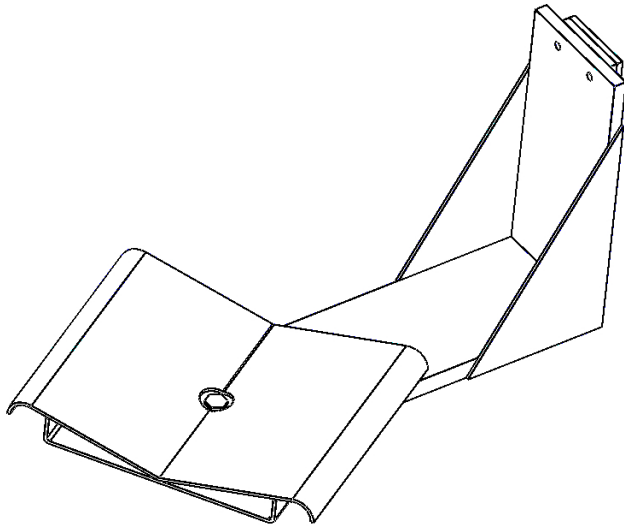


The Roller Core Boom may be ordered in several lengths up to 50" to best fit your application. Contact your AZTECH service representative for more details.



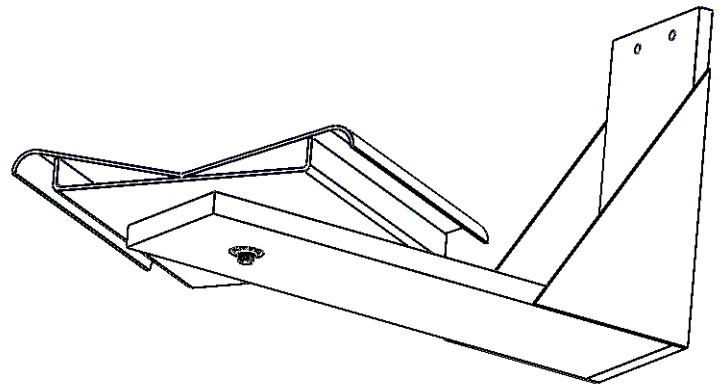
AZTECH CONVERTING SYSTEMS

MH-800E
USER MANUAL



360 Degree Swivel-Cradle:

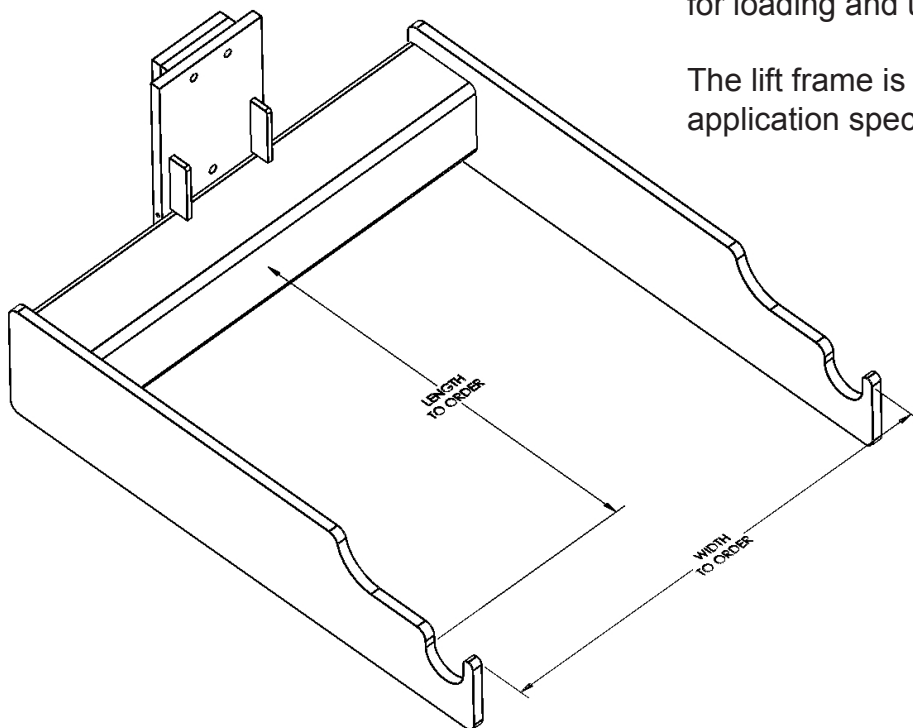
Supports the roll from the bottom and can be turned 360 degrees for precise alignment.



TWO POINT LIFT:

Supports the roll through the arbor. Typically used for loading and unloading cradle-mount arbors.

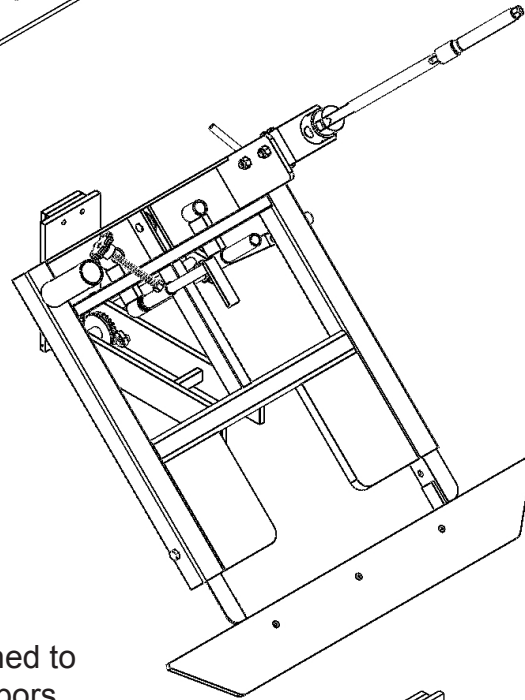
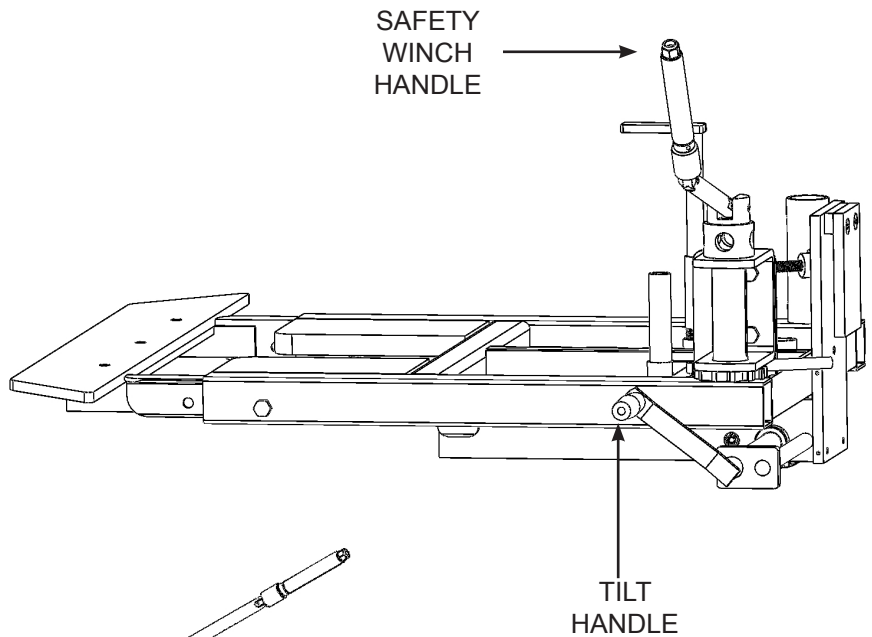
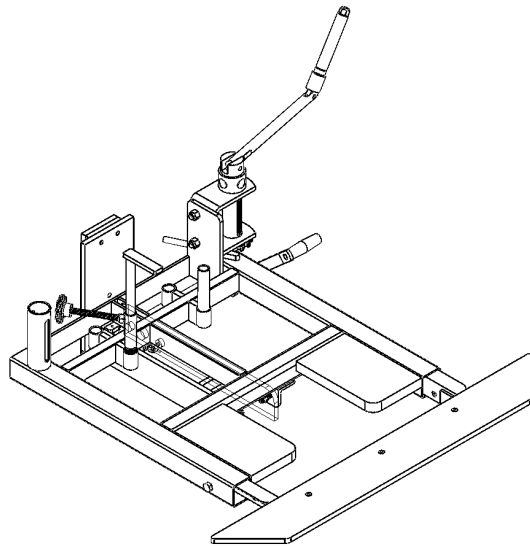
The lift frame is made to order, dimensions are application specific.





AZTECH CONVERTING SYSTEMS

MH-800E USER MANUAL



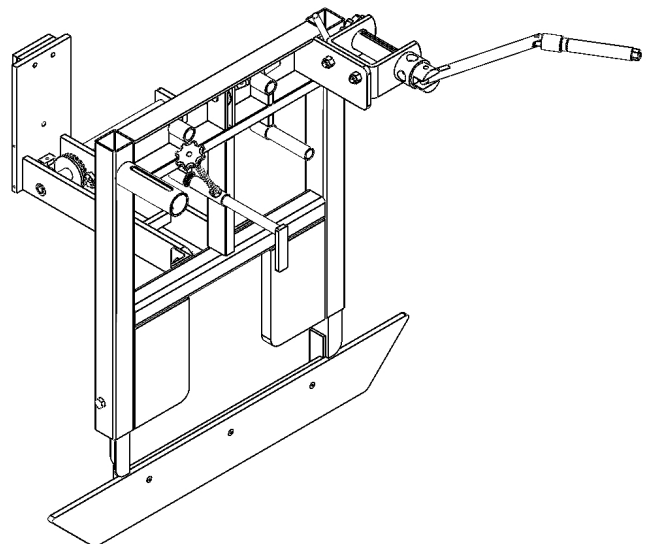
**DO NOT TILT LOAD
WITHOUT SECURING
WITH CABLE.**

MH800 TILT PLATFORM

The Tilt Platform is designed to load rolls on horizontal arbors from the vertical position.

To operate, the roll is set flat on the platform, secured using the winch and cable, then rotated into position using the crank on the lift side.

The tilt platform may be ordered in either 300# or 400# capacities.



AZTECH CONVERTING SYSTEMS

MH-800E
USER MANUAL



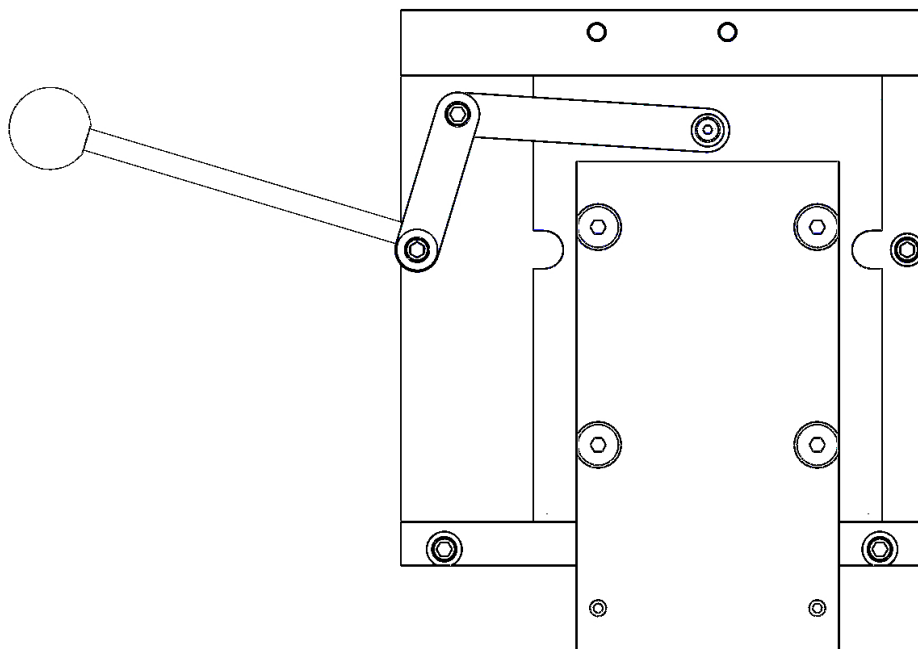
BOOM ACCESSORIES MAY BE ORDERED INDIVIDUALLY.

Please contact your AZTECH sales representative for more information.

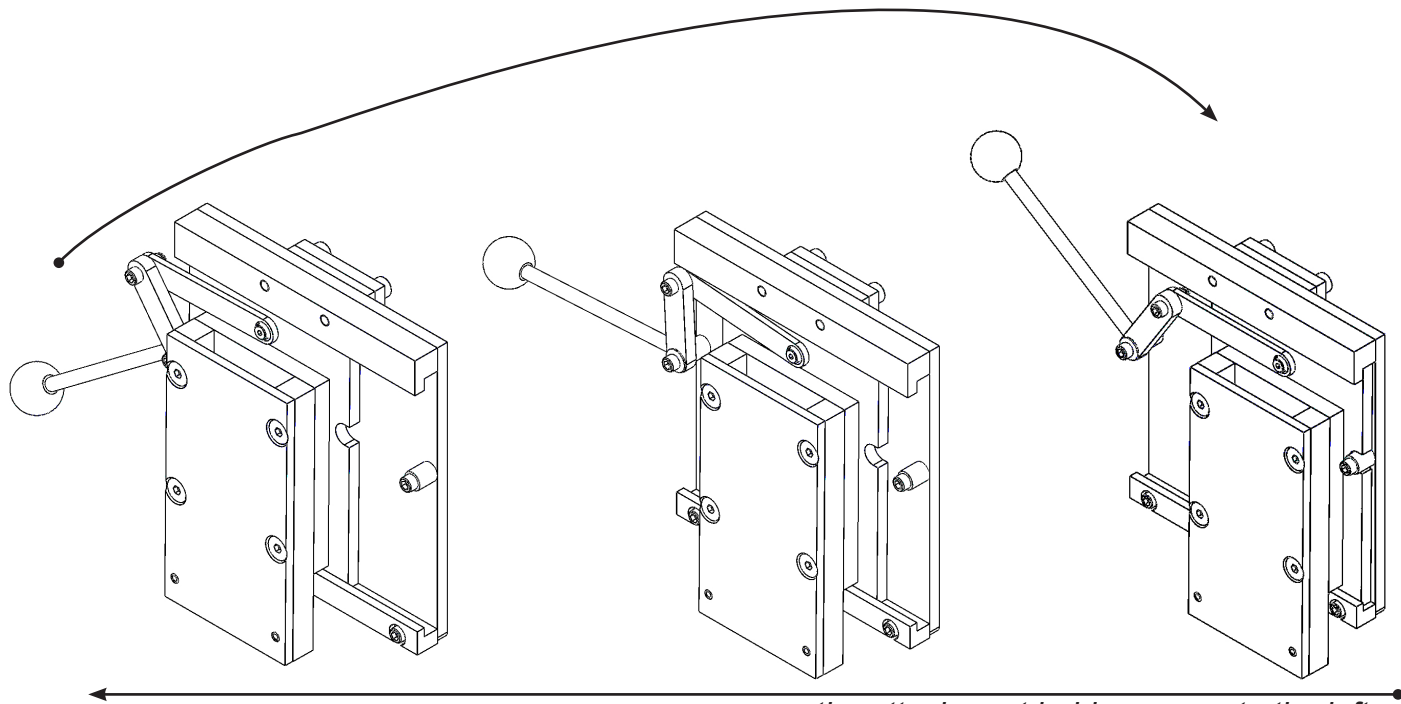
MH800 SIDELAY SYSTEM

The Sidelay System is designed to avoid the need for tedious horizontal re-alignment of the roll while loading and unloading.

Moving the handle provides an adjustment range of 3.75".



As you move the handle up...



...the attachment holder moves to the left.



Section 4: Maintenance and Repairs

4-1 Periodic Inspections

To keep your RollRunner operating properly, AZTECH recommends performing the following periodic inspection:

- Inspect cable for frayed strands or wear. If any are found, replace the cable immediately.
- Inspect the pulley on the trolley to assure that it turns easily.
- Inspect the lift attachment(s). If any cracks or damage is found, have the attachment repaired or replaced.
- Inspect the springs on the safety brake to assure they are connected at both ends.
- Inspect the toe brake on the rear heels for proper operation.
- Check the battery cell level. Fill with distilled water if necessary. Check battery terminals, clean if needed.

4-2 Charging the Battery

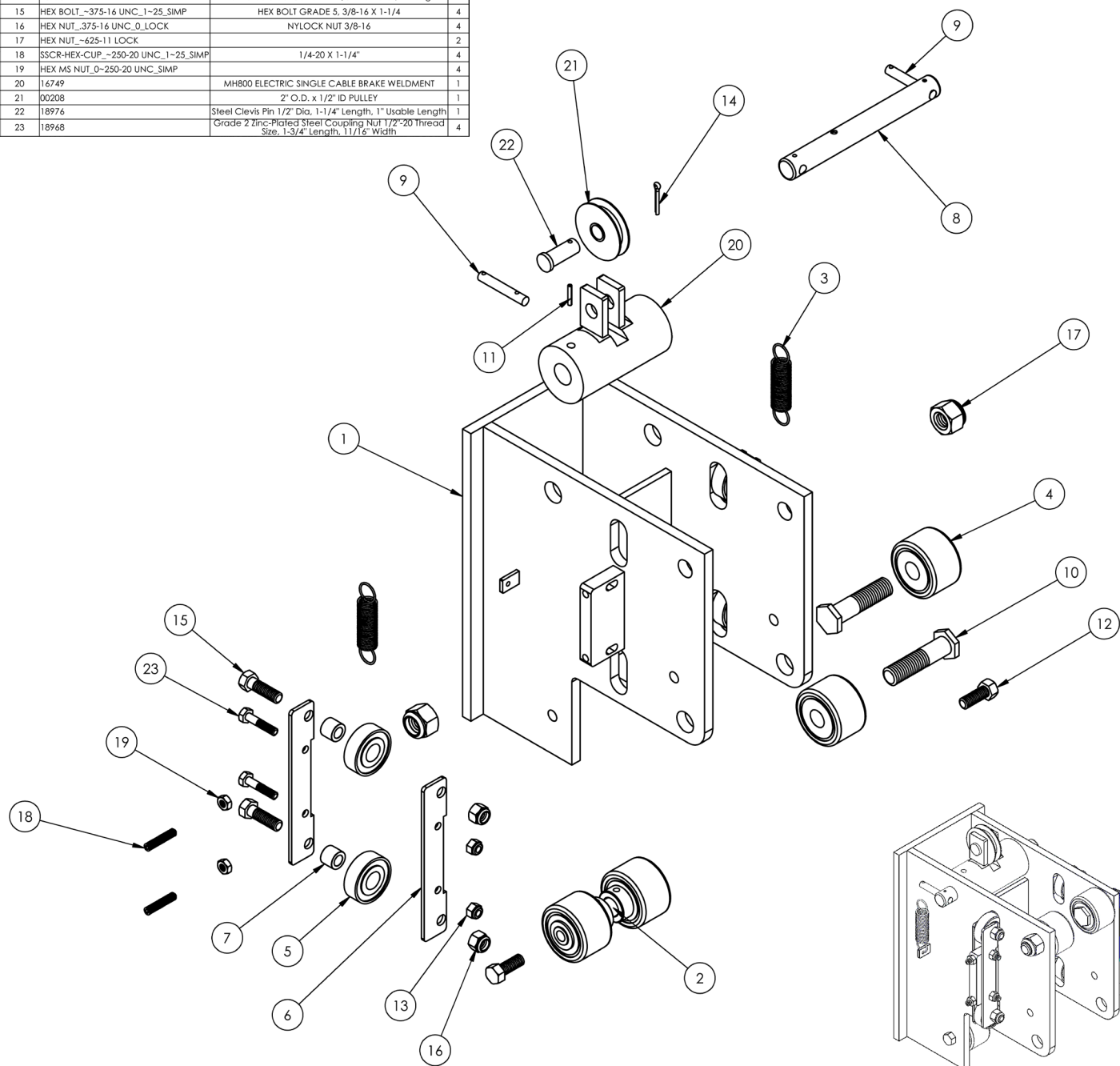
As mentioned in 2-2, your RollRunner utilizes a 12V Deep Cycle Battery that on occasion will need to be charged utilizing the charger supplied with the unit, or any automotive battery charger you may have.



Section 5: Station Details

Section 5-1: Trolley Assembly

ITEM NO.	PART NUMBER	DESCRIPTION	QTY.
1	14224	MH80A TROLLEY PLATE WELDMENT	1
2	12893	MH80 TROLLEY LOWER CAM FOLLOWER ASSEMBLY	1
3	19007	EXTENSION SPRING	2
4	18965	2" DIA X 5/8" ID CAM FOLLOWER	2
5	14477	1628 BEARING 1-5/8" OD X 5/8" ID DOUBLE SHIELDED	4
6	14360	MH80 TROLLEY PLATE FRONT CABLE, SIDE THRUST PLATE	4
7	18966	3/8" ID X 5/8" OD X 1/2" LONG OILITE	4
8	14233	MH80 TROLLEY FRONT CABLE, BRAKE SUPPORT PIVOT PIN	1
9	12158	MH40 TROLLEY BRAKE SPRING ARM SHAFT	2
10	14362	MH80 TROLLEY FRONT CABLE, CAM FOLLOWER BOLT	2
11	SLTD SPR PIN -125_0-75		2
12	HEX HD...375-16 UNC_1_SIMP		2
13	HEX NUT...250-20 UNC_0_LOCK	HEX NUT NYLOCK 1/4-20	4
14	18975	Zinc-Plated Steel Cotter Pin 1/8" Diameter, 1" Length	1
15	HEX BOLT...375-16 UNC_1-25_SIMP	HEX BOLT GRADE 5, 3/8-16 X 1-1/4	4
16	HEX NUT...375-16 UNC_0_LOCK	NYLOCK NUT 3/8-16	4
17	HEX NUT...625-11 LOCK		2
18	SSCR-HEX-CUP...250-20 UNC_1-25_SIMP	1/4-20 X 1-1/4"	4
19	HEX MS NUT_0-250-20 UNC_SIMP		4
20	16749	MH800 ELECTRIC SINGLE CABLE BRAKE WELDMENT	1
21	00208	2" O.D. x 1/2" ID PULLEY	1
22	18976	Steel Clevis Pin 1/2" Dia, 1-1/4" Length, 1" Usable Length	1
23	18968	Grade 2 Zinc-Plated Steel Coupling Nut 1/2"-20 Thread Size, 1-3/4" Length, 11/16" Width	4

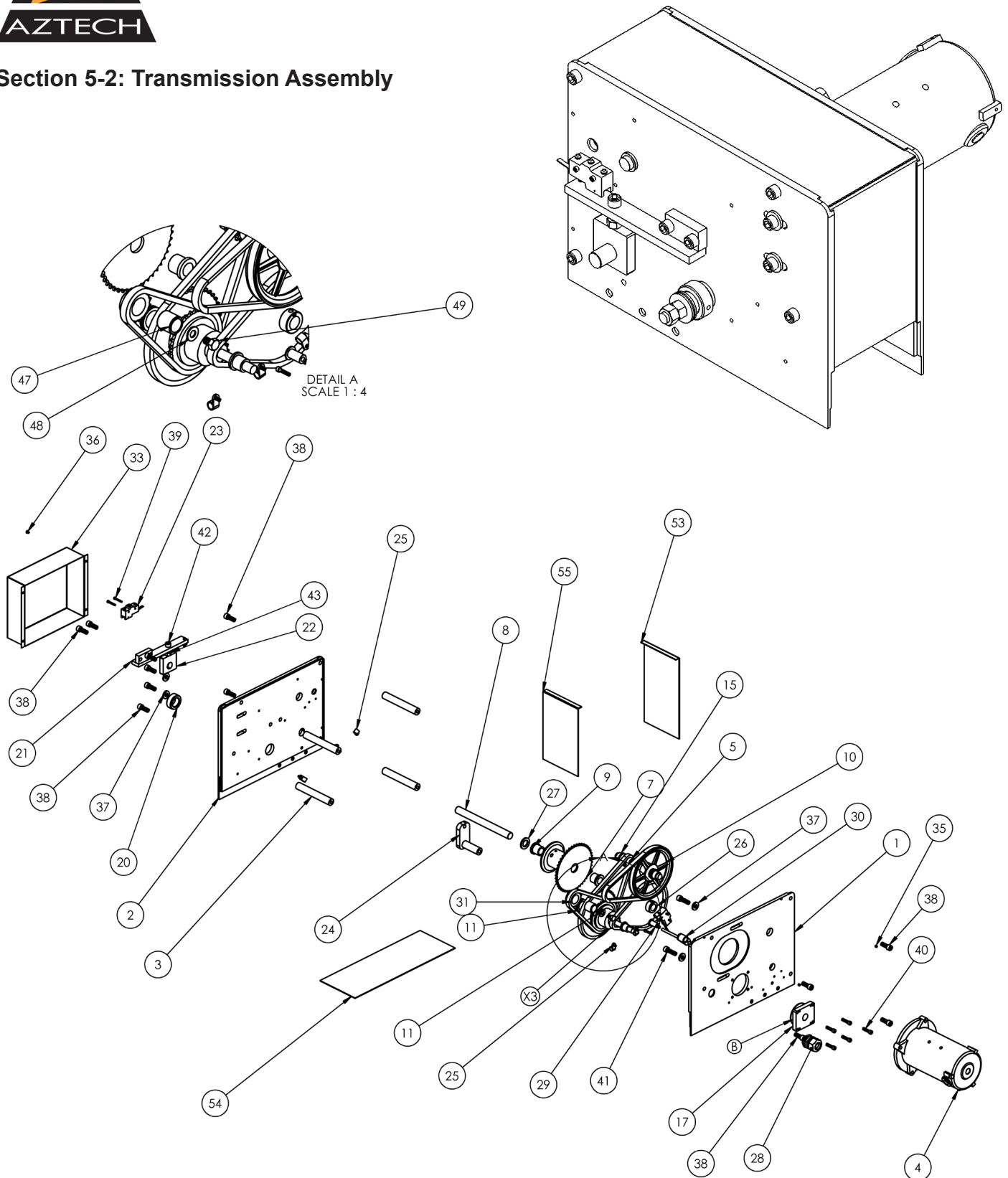




AZTECH CONVERTING SYSTEMS

MH-800E USER MANUAL

Section 5-2: Transmission Assembly



AZTECH CONVERTING SYSTEMS

MH-800E USER MANUAL



ITEM NO.	PART NUMBER	DESCRIPTION	Default/QT Y.
1	16786	MH40 ELECTRIC WINCH FRAME PLATE FRONT	1
2	16787	MH40 ELECTRIC WINCH FRAME PLATE REAR	1
3	16773	MH40 ELECTRIC WINCH STANDOFF	4
4	DC09N 12V DC MOTOR 1.4 HP	12VDC, 1/4 HP MOTOR	1
5	16788	MH40 ELECTRIC WINCH 1ST JACK SHAFT WELDMENT	1
6	AK20	5/8 BORE 1.8" PD	1
7	16790	MH40 ELECTRIC WINCH CABLE HUB WELDMENT 35 CHAIN	1
8	16774	MH40 ELECTRIC WINCH CABLE HUB SPRT SHAFT	1
9	3.4 ID X 1.1 IN OD X 1 IN LG X 1-1.4 X 3.16 FLANGE	3/4 ID X 1" OD X 1" LG X 1-1/4 OD X 3/16 FLANGED	2
10	18977	Die Cast V-Belt Pulley 4L A- & Ax-Section Belt, 6" OD, 5/8" Bore	1
11	16792	MH40 ELECTRIC WINCH BRAKE ASSEMBLY SPROCKET DRIVE	1
12	V BELT EXP2853	NAME	1
13	THIRD 35 CHAIN	NAME	1
14	FIRST 35 CHAIN	NAME	1
15	18978	5/8" ID X 7/8 OD X 5/8" LG FLANGED	2
16	625 COLLAR	5/8" SET COLLAR	1
17	16831	MH40 TRANSMISSION, REAR PLATE, BRAKE PAD CAP	1
18	1.2 ID X 3.4 OD X 3.4 LG X 1 X 1.8 FLANGED OILITE	1/2 ID X 3/4 OD X 3/4 LG X 1" X 1/8 FLANGED OILITE	1
19	1 IN ID X 1-1.4 OD X 3.4 LG X 1-1-2 X 1.8 FLANGED	1" ID X 1-1/4 OD X 3/4 X 1-1/2 X 1/8 FLANGED OILITE	1
20	1 IN SET COLLAR	1" SET COLLAR	2
21	16794	MH40 TRANSMISSION, LOAD CELL WELDMENT	1
22	16778	MH40 TRANSMISSION, LOAD CELL SHAFT SPRT BLOCK	1
23	Z-15GW-B7-K ASSEMBLY	General Purpose Snap Action Switch	2
24	15183	M150 TRANSMISSION DRILL ROD 20 MM ONE WAY CLUTCH SHAFT WELDMENT	1
25	3.8 CORD CLAMP WITH BTNHD 8-32 X 3/8	3/8 CORD CLAMP WITH BTNHD 8-32 X 3/8	6
26	34inch_ SET Collar	3/4 INCH SET COLLAR	1
27	3.4 ID X 1-1.4 OD X .134 THICK SHIM	MSC 97063A139	1
28	3.4 STRAIN RELIEF ASSEMBLY	3/4" NON METALLIC LIQUID-TIGHT TYPW B CONNECTOR	1
29	16782	MH40 ELECTRIC WINCH PIVOT LINK SPRT SHAFT	1
30	16795	MH40 ELECTRIC WINCH PIVOT LINK WELDMENT	1
31	16797	MH40 ELECTRIC OWC SPOCKET	1
32	CLUTCH 35 CHAIN	NAME	1
33	16784	MH40 TRANSMISSION, CART HEAD SIDE COVER	1
34	18971	5/8 ID X 1" OD X .075 THICK Wide-Rim Shims	4
35	SSCR-HEX-CUP_~190-32 UNC 0~1875 SIMP	SOCKET SET SCREW CUP POINT 10-32 X 3/16"	2
36	BTNHD_~164-32 UNC 0~25 SIMP	BUTTON HEAD CAP SCREW 8-32 X 1/4"	4
37	WSHR A_~375 HARD	3/8" HARD WASHER	4
38	SCH_~375-16 UNC_1 SIMP	SOCKET HEAD CAP SCREW 3/8-16 X 1"	12
39	SCH_~138-32 UNC_1 SIMP	SCH 6-32 X 1"	4
40	SCH_~250-20 UNC_1 SIMP	SOCKET HEAD CAP SCREW 1/4-20 X 1"	5
41	SCH_~375-16 UNC 1~25 SIMP	SOCKET HEAD CAP SCREW 3/8-16 X 1-1/4"	2
42	SCH_~375-16 UNC 1~5 SIMP	SOCKET HEAD CAP SCREW 3/8-16 X 1-1/2"	1
43	HEX NUT_~375-16 UNC 0 SIMP	HEX NUT 3/8-16	1
44	SSCR-HEX-CUP_~250-20 UNC 1 SIMP	SOCKET SET SCREW 1/4-20 X 1"	1
45	HEX NUT_~250-20 UNC 0 SIMP	1/4-20 NUT	1
46	SSCR-HEX-CUP_~250-20 UNC 0~5 SIMP	SOCKET SET SCREW 1/4-20 X 1/2"	1
47	HFL-2026	INA Drawn cup roller clutches HFL-2026	1
48	WSHR A_~375N	WASHER 3/8 N	1
49	HEX BOLT_~375-16 UNC 0~5 SIMP	HEX BOLT 3/8-16 X 1/2" GRADE 5	1
50	HEX NUT_~164-32 UNC 0 SIMP	8-32 NUT	1
51	SCH_~164-32 UNC 0~5 SIMP	SOCKET HEAD CAP SCREW 8-32 X 1/2"	1
52	SCH_~164-32 UNC 0~75 SIMP	8-32 X 3/4" SOCKET HEAD CAP SCREW	1
53	16775	MH40 ELECTRIC WINCH END GUARD	1
54	16776	MH40 ELECTRIC WINCH TOP GUARD	1
55	16783	MH40 ELECTRIC WINCH END GUARD SWITCH SIDE	1

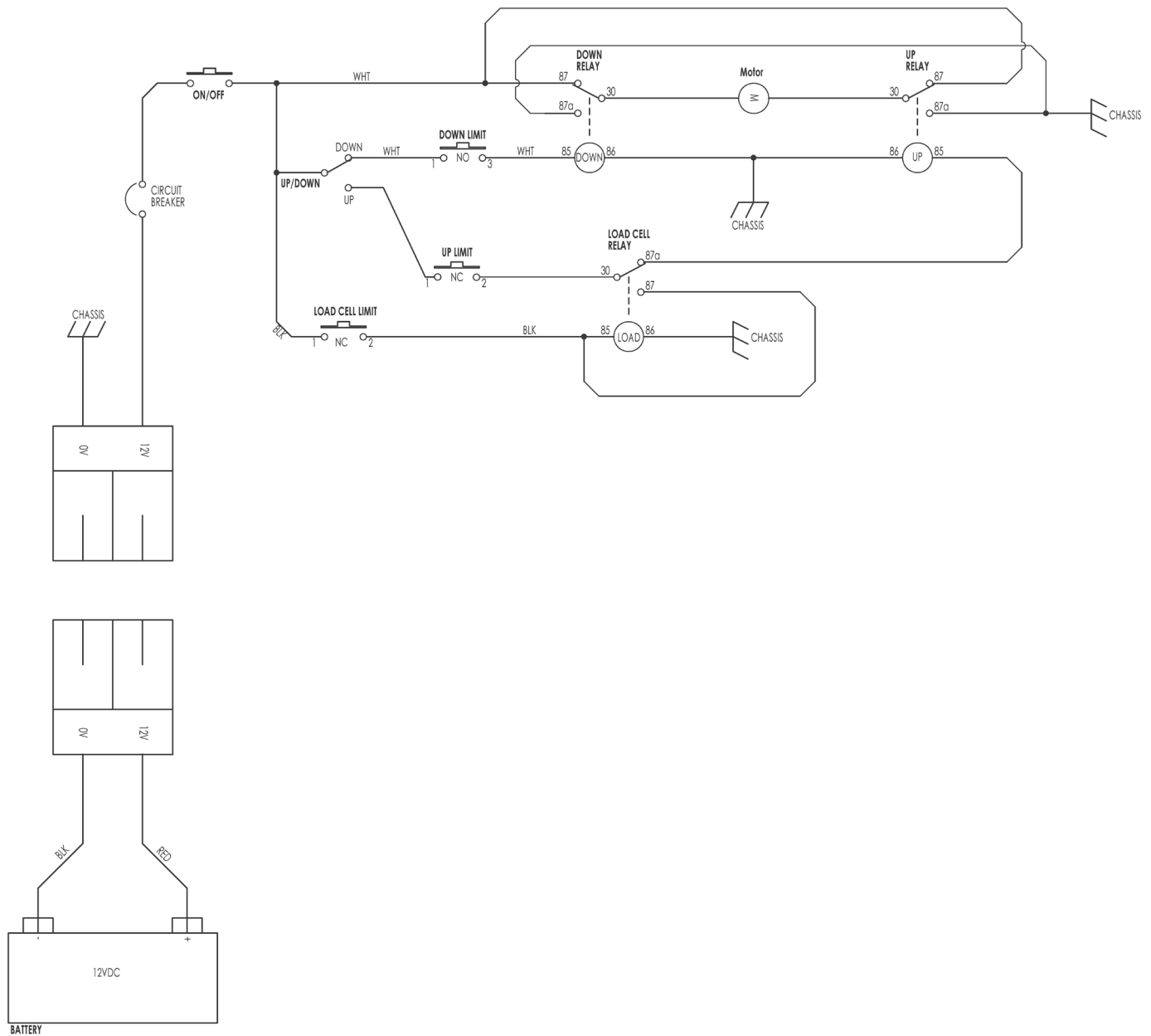


AZTECH CONVERTING SYSTEMS

MH-800E

USER MANUAL

Section 5-3: Electrical Schematic





Section 6: Replacement Parts

6-1: Replacement Casters

FRONT: CAS002-781

REAR w/BRAKE: CAS022-749

6-2: Replacement Lift Cables

MH-800AE - 13910

MH-800CE - 13911

**DISCONNECT BATTERY BEFORE
ATTEMPTING ANY SERVICE**



AZTECH CONVERTING SYSTEMS

MH-800E USER MANUAL

7-1: Warranties & Provisions

WARRANTIES

All equipment manufactured and sold by AZTECH Converting Systems (Seller) is warranted to be free of defective materials and workmanship under normal use and service for a period of one (1) year from the date of delivery to Buyer's premises. All commercial components not manufactured by Seller carry the original manufacturer's warranty. At Seller's discretion, Seller may provide on-site warranty service for a period of ninety (90) days from the aforementioned date.

REMEDIES

If within the Warranty Period any such Equipment is proven to Seller's satisfaction to be defective in either material or workmanship, Seller, at its sole discretion, shall (a) repair or replace defective parts on the Equipment at Seller's cost, or (b) grant a reasonable allowance on account of such a breach. If within the Warranty Period the Seller receives notice from Buyer of defects in parts or materials. Seller will ship (ground, prepaid) replacement parts and invoice Buyer for the full cost of the replacement parts). Buyer will receive a Return Authorization (RA) from seller, and return defective parts or materials to Seller, who at its sole discretion shall deter-

Section 7: Warranties and Service

mine whether defective parts or materials are or are not subject to exclusion from this warranty as provided herein. Any defective parts or material not excluded from the Warranty Period will then be fully credited to Buyer.

EXCLUSIONS

THE FOLLOWING ITEMS ARE EXCLUDED FROM THIS WARRANTY.

- Defects or damage caused by careless or improper use.
- Parts that need periodic replacement from wear during normal operation.
- Routine maintenance and adjustment.
- Failure or damage caused by improper installation or inadequate maintenance by Buyer.
- Failure or damage caused by equipment modifications by Buyer.
- Equipment damage resulting from an accident, or abnormal conditions of operation.

DISCLAIMER

NO OTHER WARRANTY IS EXPRESSED OR IMPLIED INCLUDING WARRANTIES OF MERCHANTABILITY AND FITNESS FOR ANY PARTICULAR PURPOSE. SELLER IS NOT LIABLE FOR INCIDENTAL OR CONSEQUENTIAL DAMAGE SUCH AS, BUT NOT LIMITED TO LOSS IN

PROFITS, LOSS OF USE OF EQUIPMENT, OR INCREASED IN OPERATING COSTS OR EXPENSES.

7-2: Technical Service

In the event that your MH-800 is not functioning properly or if you have any technical questions, an AzTech Technical Service representative is available to assist you. Contact information is as follows:

Phone: 1-800-829-8351

Fax: 1-480-998-5409

E-Mail: techservice@aztech-converting.com