



AZTECH CONVERTING SYSTEMS

212 W Lodge Drive

TEMPE, AZ 85283

PHONE (480) 951-8351

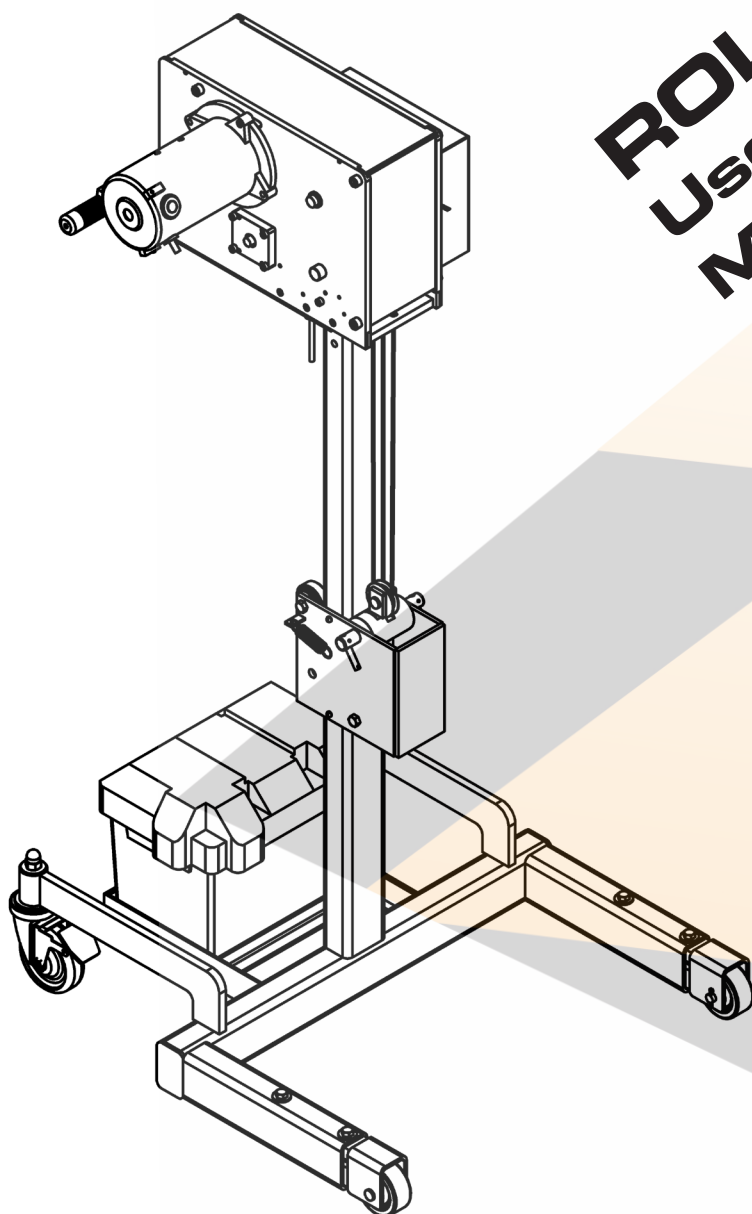
FAX (480) 998-5409

www.aztechconverting.com

ROLL RUNNER

User Manual

MH-400E





AZTECH CONVERTING SYSTEMS

**MH-400E
USER MANUAL**

TABLE OF CONTENTS

SECTION 1: GENERAL INFORMATION	1-5
SECTION 2: MACHINE SETUP	5
SECTION 3: MACHINE OPERATION	6-9
SECTION 4: MAINTENANCE AND REPAIRS	10
SECTION 5: STATION DETAILS	11-12
SECTION 6: REPLACEMENT PARTS	13
SECTION 7: WARRANTIES AND SERVICE	14



Section 1: General Information

1-1: Introduction

The AZTECH RollRunner Model 400E Roll Handling Cart is designed and manufactured to help reduce workplace injuries by performing various material handling functions utilizing AZTECH's innovative quick-change attachment system. The RollRunner with its all-steel construction and simplistic design will prove to be an invaluable product for your work environment and is sure to provide your company many years of safe, dependable service.

The 400E series is an augmentation of the MH-400 featuring electric winch operation to further reduce on-the-job strain.

1-2: Machine Information and Specifications

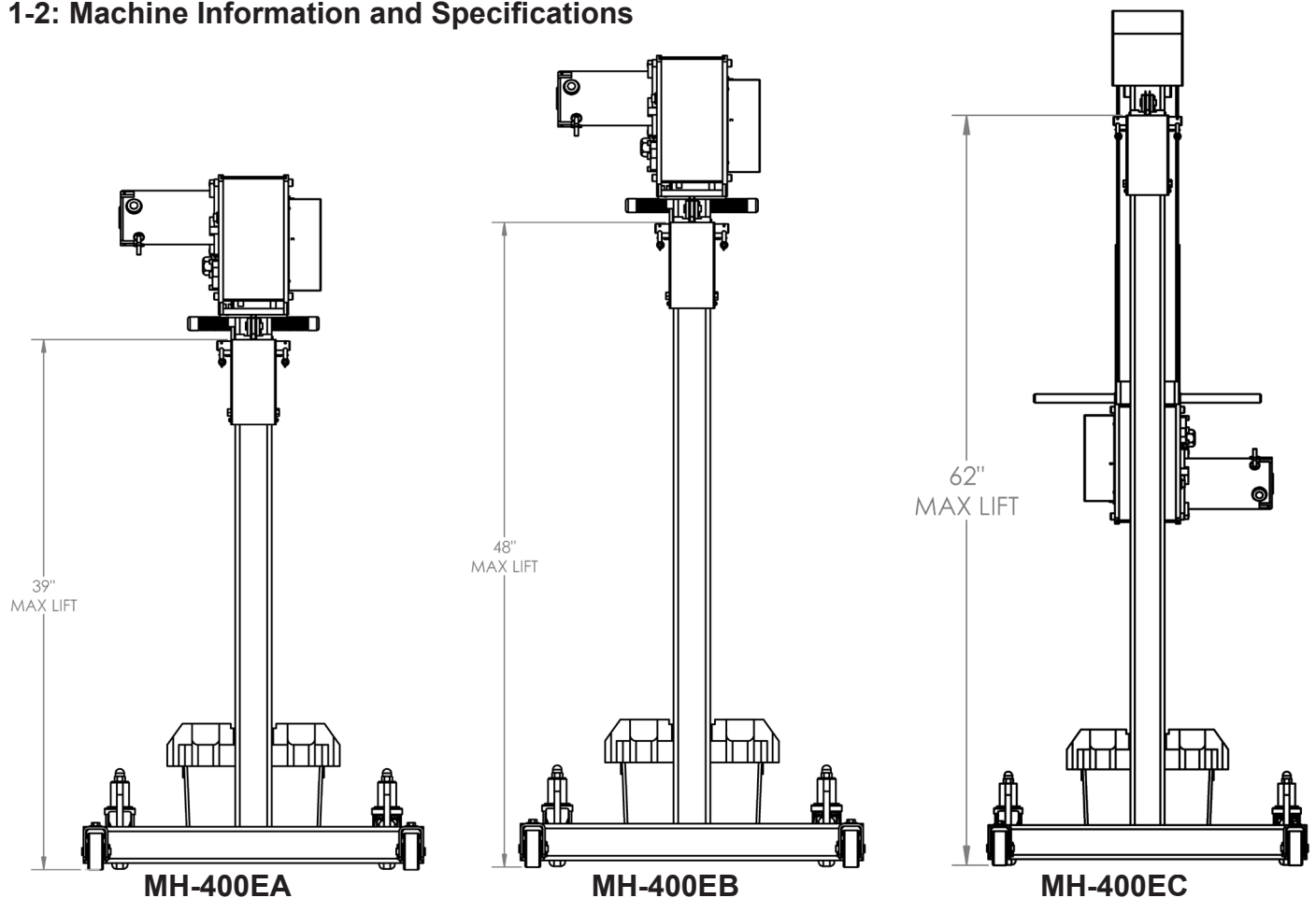


Fig. 1-1: MAX LIFT HEIGHTS

The MH-400 operates on a cable and winch lift system. The lift height is limited by the height of the upright boom. Currently, three different lift heights are offered. They are the 400A, 400B and 400C. Their respective maximum lifts are shown in Fig. 1-1.

The 400A and the 400B have similar footprints, while the 400C is slightly larger. Their respective sizes are shown in Figs 1-2, 1-3 & 1-4.



AZTECH CONVERTING SYSTEMS

MH-400E USER MANUAL

MH-400EA

MAX LOAD: 400 LBS (181 kg)

MAX Lift Height: 38.25 (97cm)

Dimensions: 28.25 X 34 X 57.25

All dimensions are inches unless otherwise specified

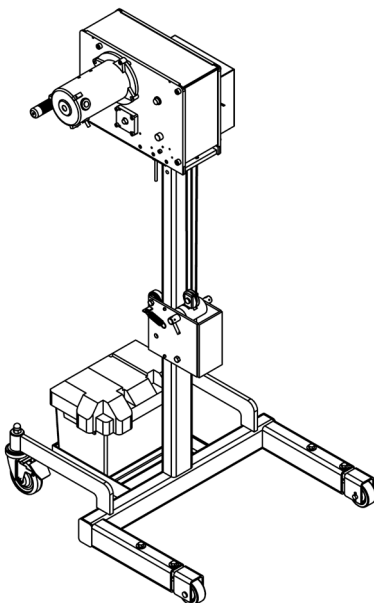
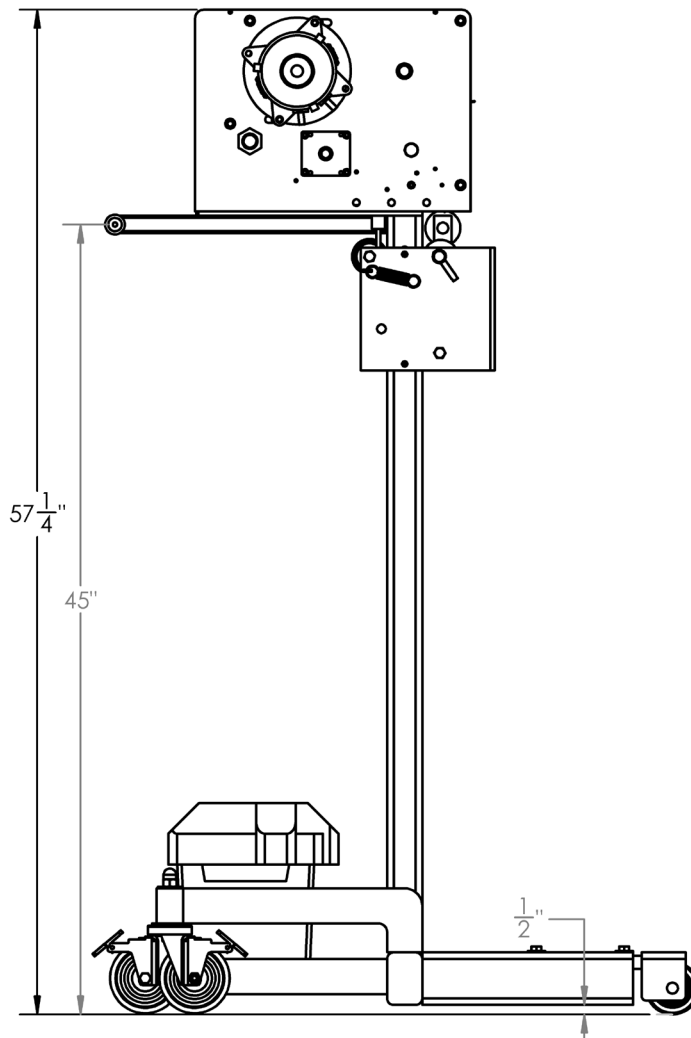
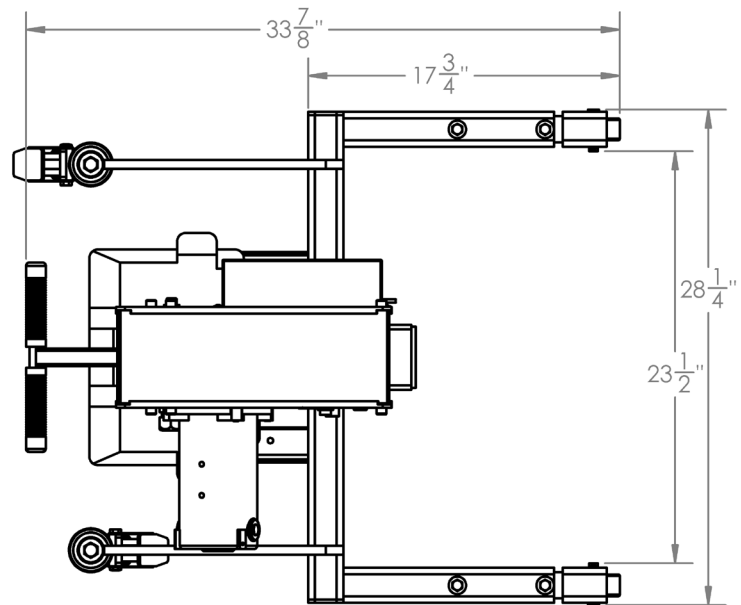
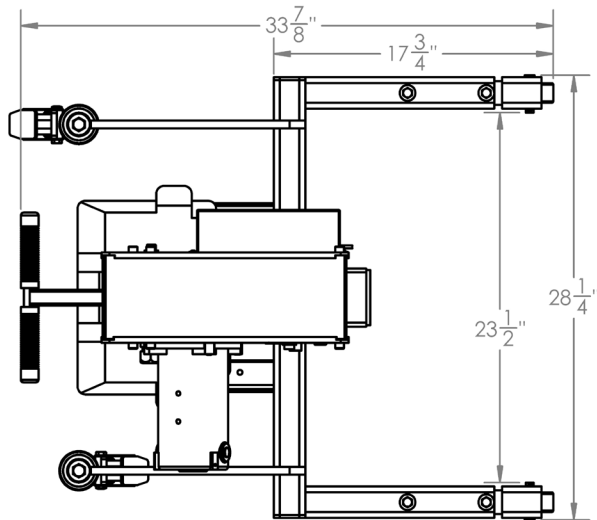


Fig. 1-2: THE MH-400A

AZTECH CONVERTING SYSTEMS

MH-400E USER MANUAL



MH-400EB

MAX LOAD: 400 LBS (181 kg)

MAX Lift Height: 48 (122cm)

Dimensions: 28.25 X 34 X 50.75

All dimensions are inches unless otherwise specified

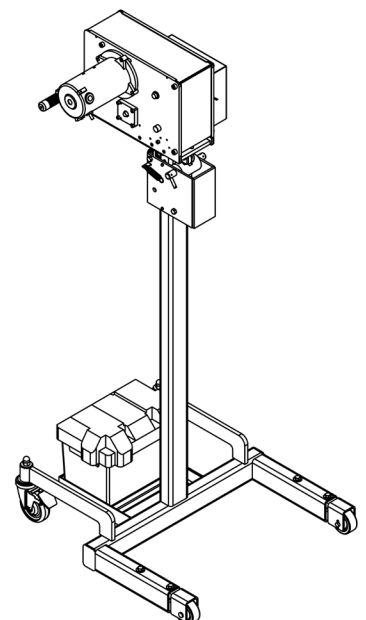
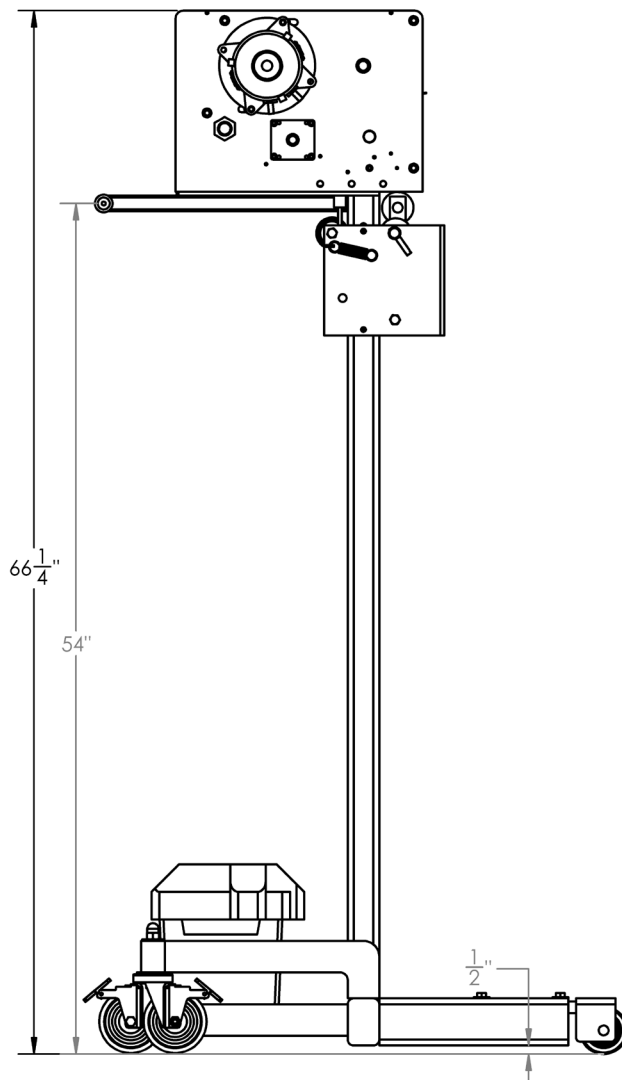
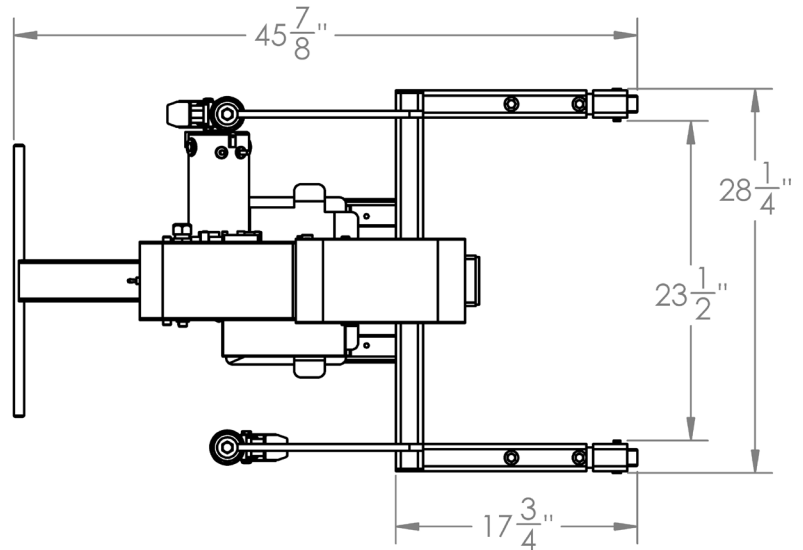


Fig. 1-3: THE MH-400B



AZTECH CONVERTING SYSTEMS

MH-400E USER MANUAL



MH-400EC

MAX LOAD: 400 LBS (181 kg)

MAX Lift Height: 62.00 (157cm)

Dimensions: 28.25 X 39 X 73.35

All dimensions are inches unless otherwise specified

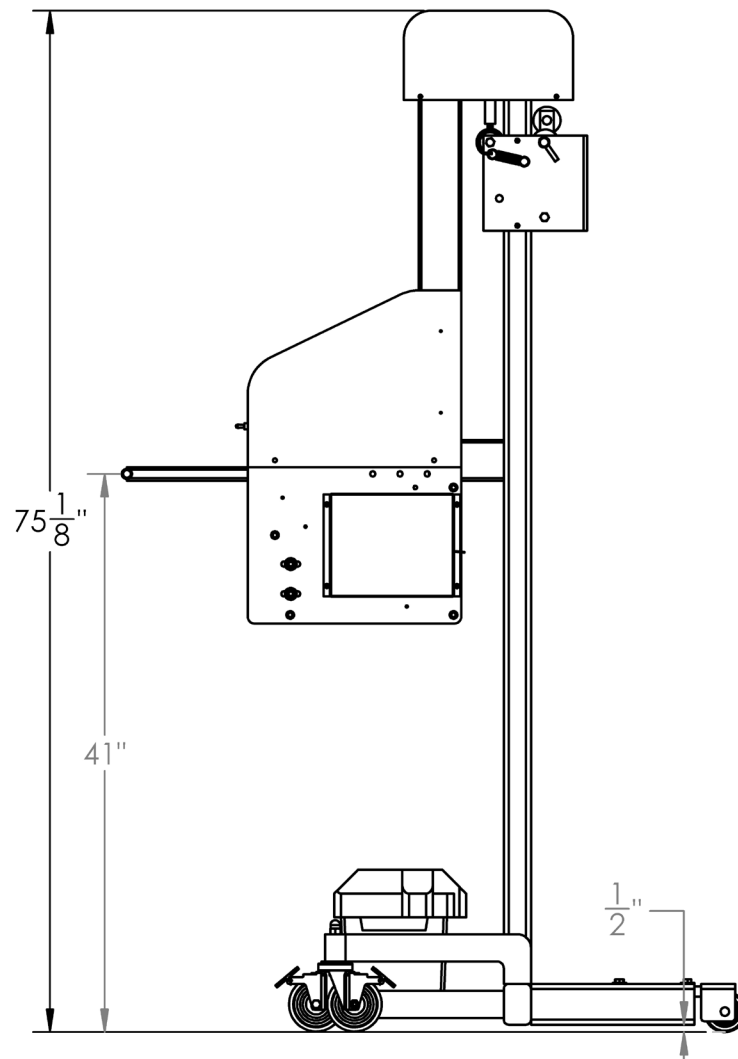
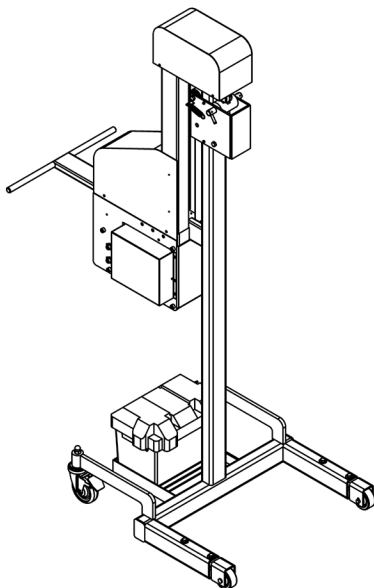


Fig. 1-4: THE MH-400C



1-3: Care and Maintenance

The RollRunner is relatively maintenance free, generally only requiring periodic inspections. Over time, you may need to replace the lift cable, which is simply performed by removing the old cable and inserting the new cable and crimping at the open end.

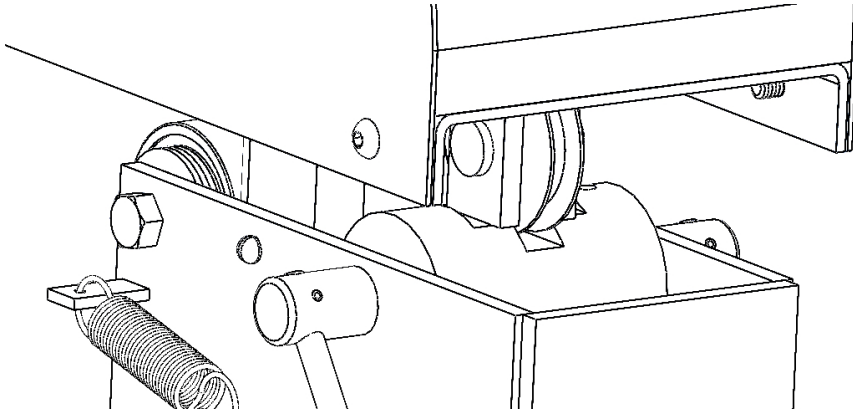


Fig. 1-5: SAFETY BRAKE DETAIL

1-4: Safety

The RollRunner is equipped with a safety brake which will automatically engage in the event of lift cable breakage. (see Figure 1-5)

NEVER:

- Operate the ROLL RUNNER without the safety cover.
- Lift load over people
- Exceed the 400 LB weight limitation
- Use the ROLL RUNNER to transport people

Section 2: Machine Setup

2-1: Uncrating & Inspection

After carefully removing your RollRunner from the crate, check to assure that all the bolts are tight and that no components have come loose during shipment. Carefully inspect all 4 wheels making sure they roll freely and are free of damage. If any visible damage has occurred in shipment, contact AZTECH immediately.

2-2: Safety Brake Inspection

As noted in 1-4, your RollRunner is equipped with a safety brake which will prevent a load from falling in the event of a ca-

ble break. To assure it is working properly, check to see that the 2 springs that activate the safety brake have tension and are attached at both ends.

2-2 Battery Connection

The RollRunner's motorized lift utilizes a 12 Volt deep-cycle battery (not provided) which may be purchased at virtually any automotive or department store. To connect the battery, simply connect red cable to the positive (+) terminal, and the other cable to the negative (-) terminal. The RollRunner comes with an auxillary battery charger and will need to be

charged periodically dependant on use. Generally the higher the cold cranking amps (CCA) the battery is rated at, the less frequently it would need to be charged.

2-4: Winch & Cable Inspection

Before lifting a load for the first time, remove the protective winch cover and visually inspect to assure that the cable is seated properly in the grooves of the pulleys.



AZTECH CONVERTING SYSTEMS

MH-400E USER MANUAL

Section 3: Machine Operation

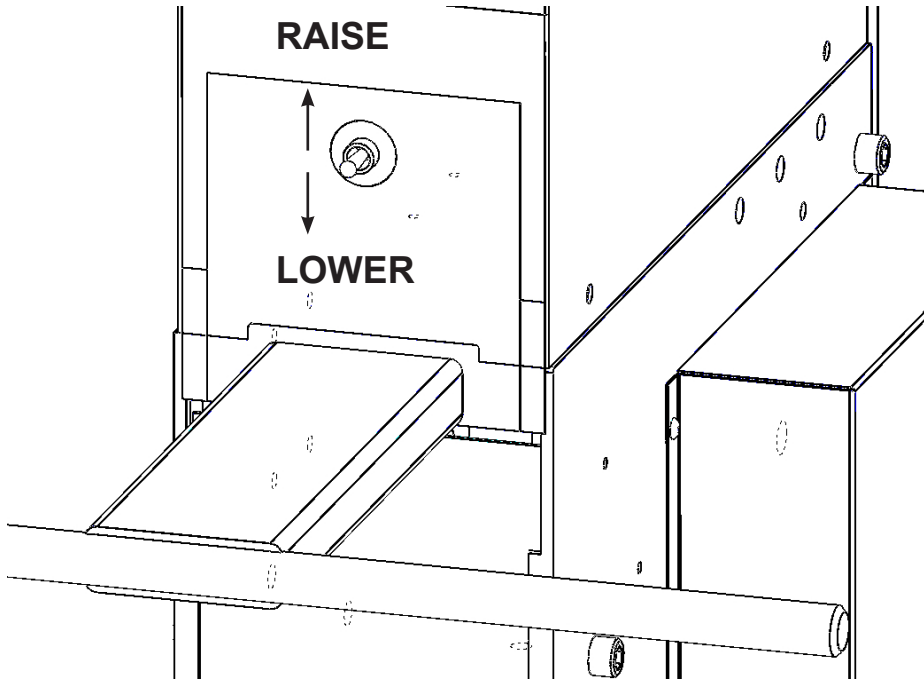


Fig. 1-5: CRANK OPERATION

3-1: Operating Lift

To operate the motorized lift, raise switch to “UP” position to raise the load, and lower switch to “DOWN” position to lower the load (see Fig. 1-5). The RollRunner is equipped with upper and lower limit switches which will automatically shut down the machine when the load reaches its highest and lowest points of travel.

3-2: Rear Wheel Safety Brakes

The RollRunner is equipped with back wheel safety brakes which are to be used to hold the cart in place once in desired position and as a safety feature to keep the cart from rolling while in the stationary position. To operate, simply press handle down and snap into place to activate brake, and lift to de-activate brake.

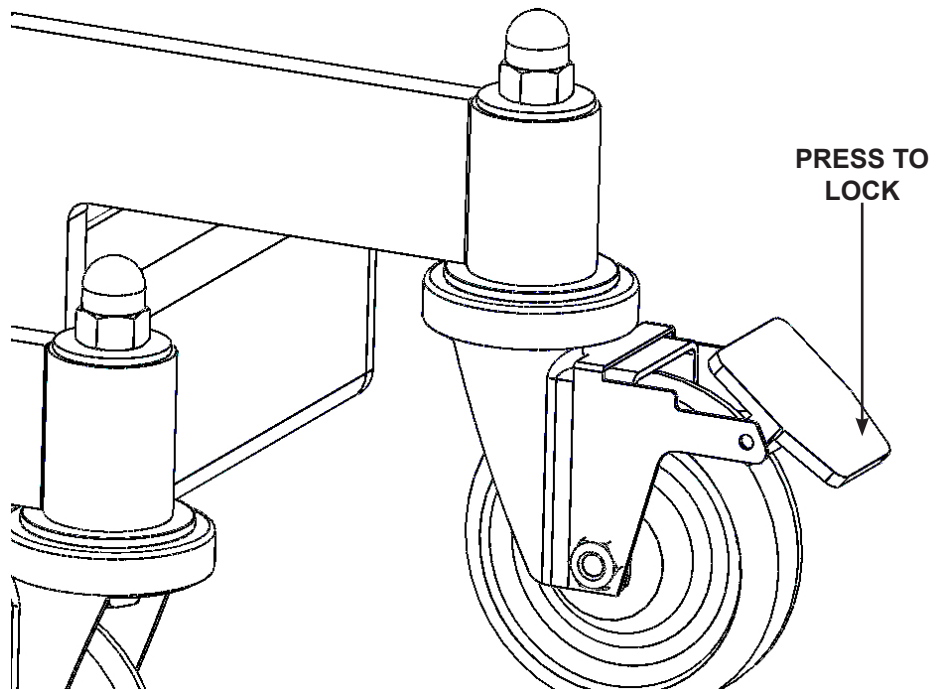


Fig. 1-5: SAFETY BRAKE

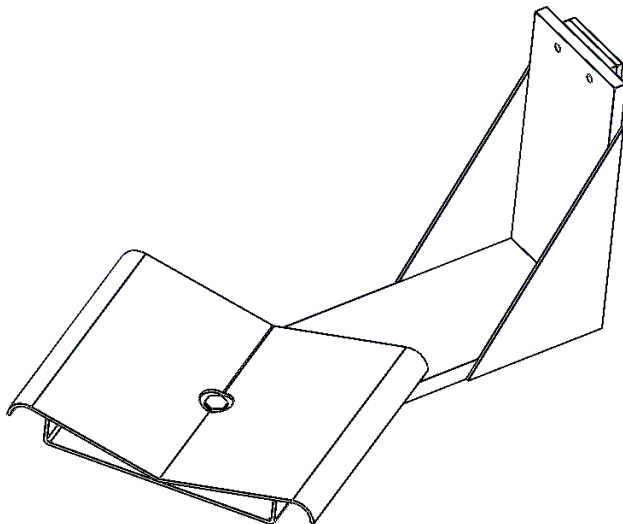
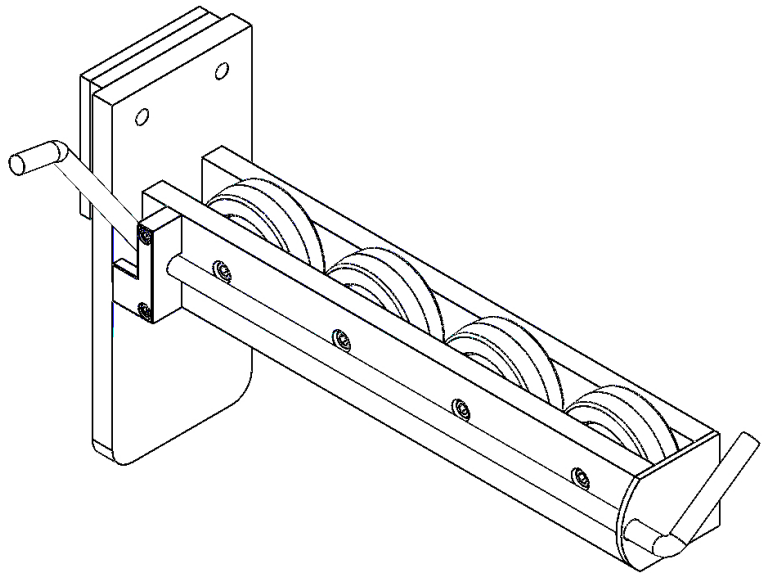


3-3 Changing Attachments

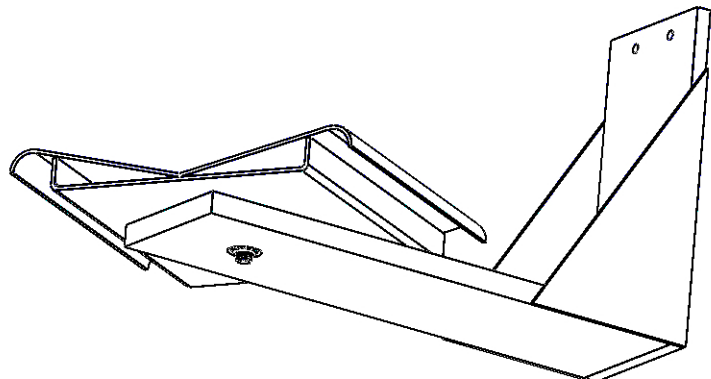
The Rollrunner utilizes a EZ Change Attachment System which makes it capable of performing numerous tasks. To change attachments, simply lift attachment off the trolley and lower into place making certain that retainer tab slides into the Slot at the top of the trolley.

3-4: Available Attachments

Roller Core Boom: For loading and unloading rolls from the side position by supporting the roll through the roll's core.



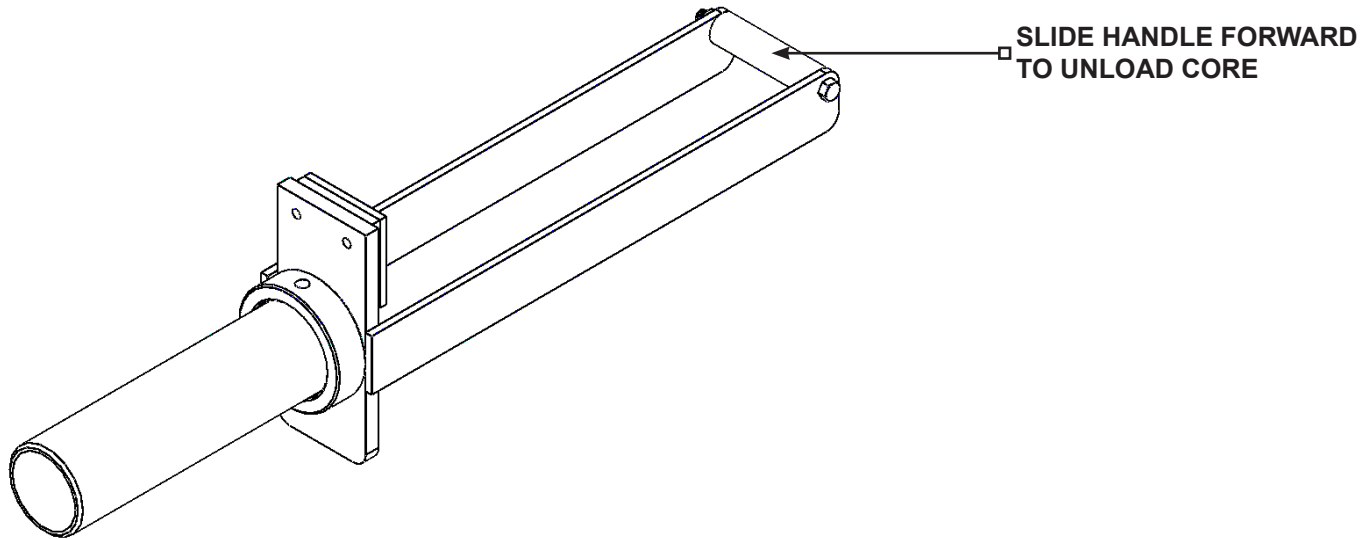
360 Degree Swivel-Cradle:
Supports the roll from the bottom and can be turned 360 degrees for precise alignment.





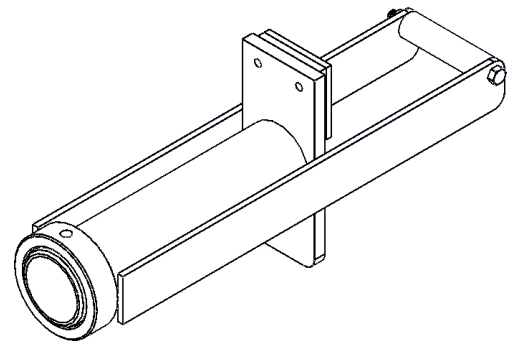
AZTECH CONVERTING SYSTEMS

MH-400E USER MANUAL



EJECTOR CORE:

Allows the operator to manually unload the roll without walking around the machine.



BOOM ACCESSORIES MAY BE ORDERED INDIVIDUALLY.

Please contact your AZTECH sales representative for more information.

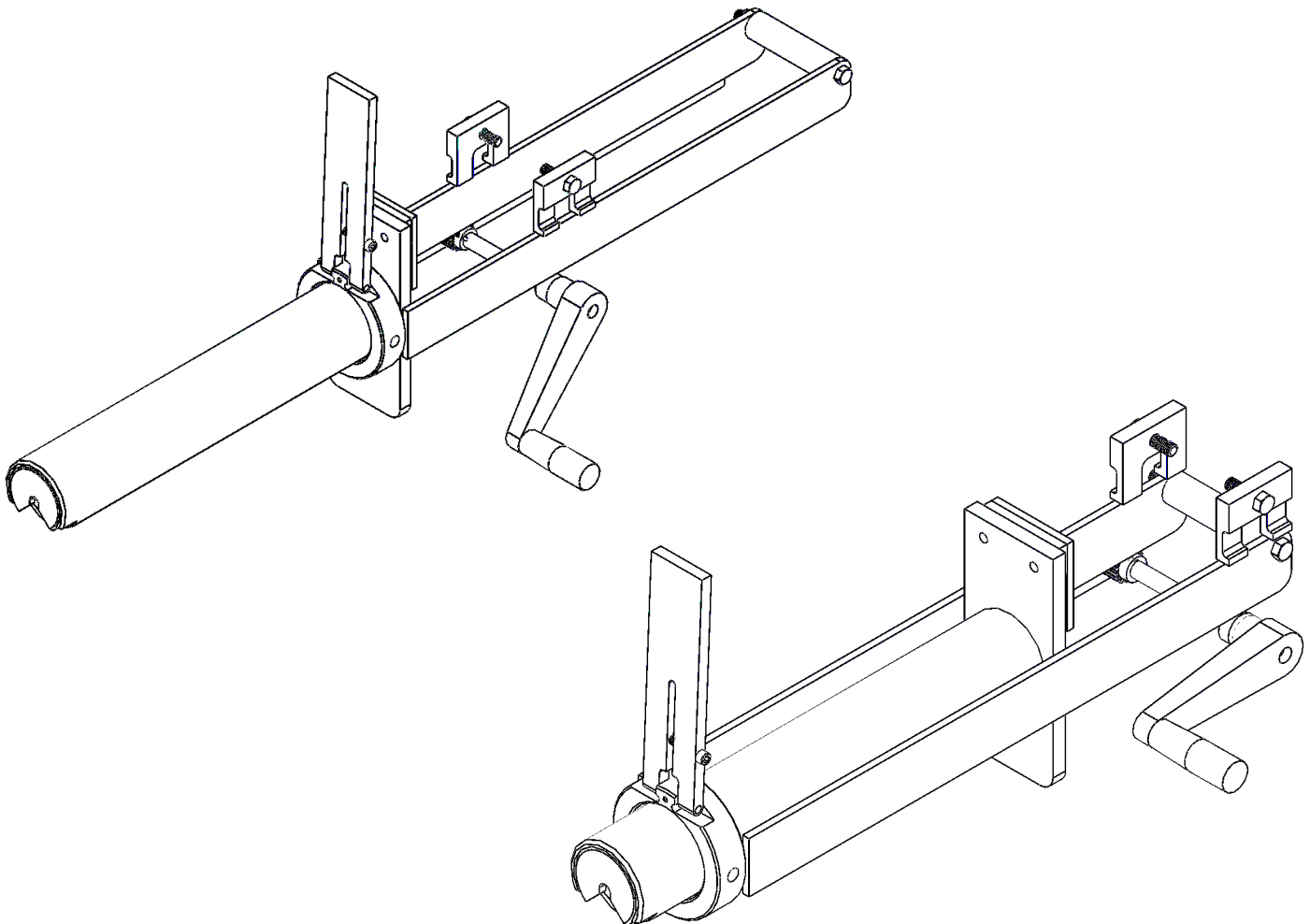
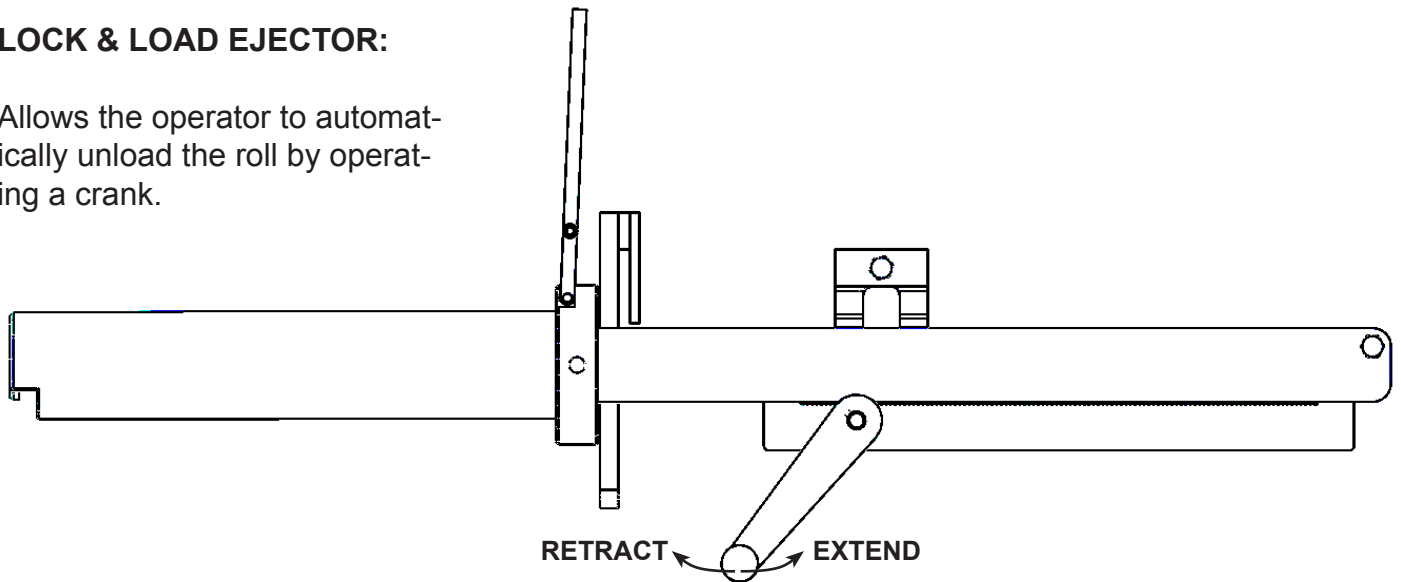
AZTECH CONVERTING SYSTEMS

MH-400E
USER MANUAL



LOCK & LOAD EJECTOR:

Allows the operator to automatically unload the roll by operating a crank.





Section 4: Maintenance and Repairs

4-1 Periodic Inspections

To keep your RollRunner operating properly, AZTECH recommends performing the following periodic inspection:

- Inspect cable for frayed strands or wear. If any are found, replace the cable immediately.
- Inspect the pulley on the trolley to assure that it turns easily.
- Inspect the lift attachment(s). If any cracks or damage is found, have the attachment repaired or replaced.
- Inspect the springs on the safety brake to assure they are connected at both ends.
- Inspect the toe brake on the rear heels for proper operation.
- Check water level in battery and add distilled water as needed.

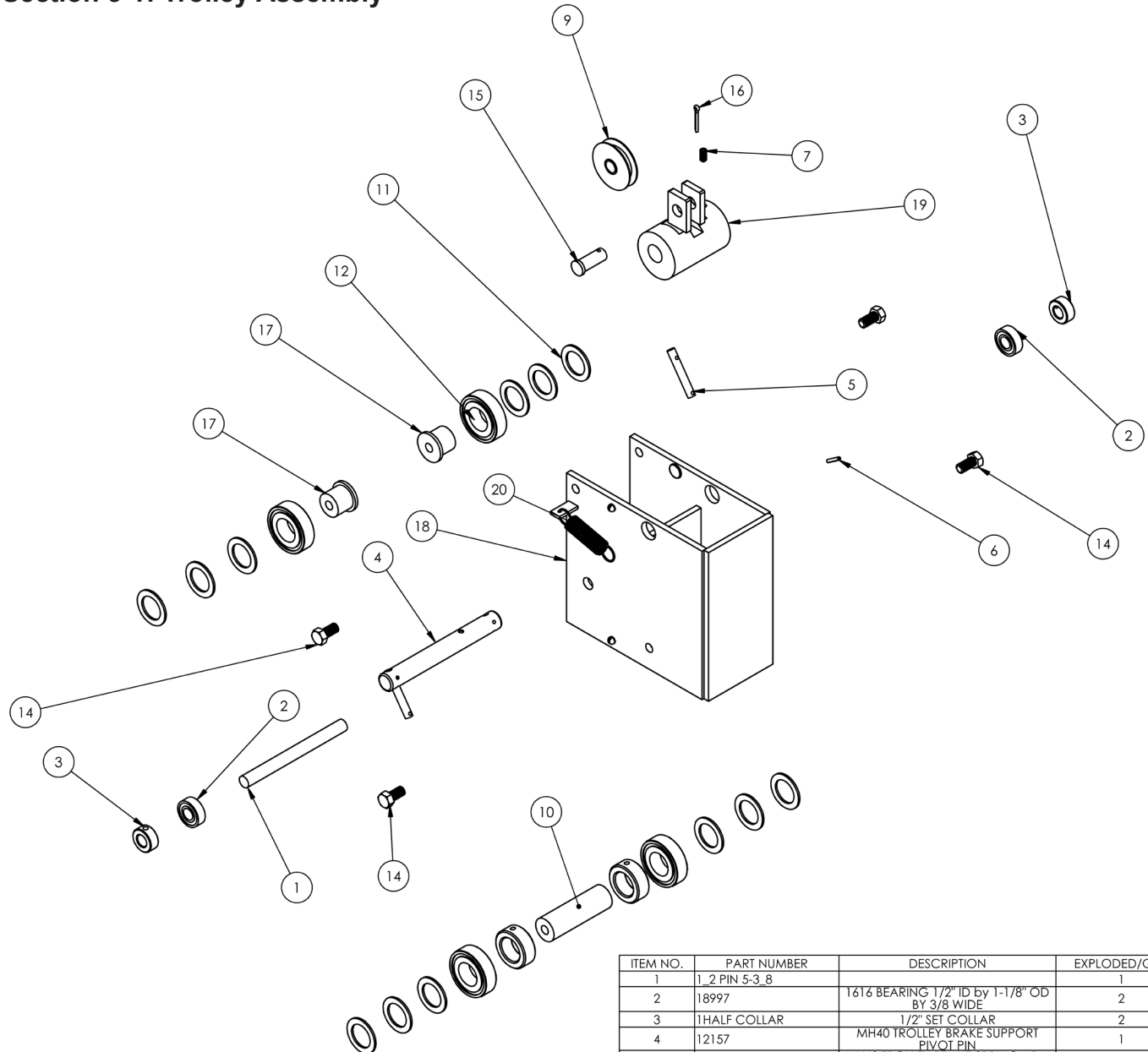
4-2 Charging the Battery

As noted in 2-2, your RollRunner utilizes a 12V Deep Cycle Battery that on occasion will need to be charged utilizing the charger supplied with the unit, or any automotive battery charger you may have.



Section 5: Station Details

Section 5-1: Trolley Assembly



ITEM NO.	PART NUMBER	DESCRIPTION	EXPLODED/QTY.
1	1_2 PIN 5-3_8		1
2	18997	1616 BEARING 1/2" ID by 1-1/8" OD BY 3/8 WIDE	2
3	1HALF COLLAR	1/2" SET COLLAR	2
4	12157	MH40 TROLLEY BRAKE SUPPORT PIVOT PIN	1
5	12158	MH40 TROLLEY BRAKE SPRING ARM SHAFT	2
6	SLTD SPR PIN ~125_0~75		2
7	SSCR-HEX-CUP .250-20 UNC_0.5_SIMP	SOCKET SET SCREW SUP POINT 1/4-20 X 1/2"	1
8	18984	PUSHIN NYLON PIN	4
9	00208	2" O.D. x 1/2" ID PULLEY	1
10	13101	MH40 ROLLER SUPPORT SHAFT	1
11	18983	WASHER 1-1/2 OD X 1" ID X .077	12
12	18990	1641 BEARING 1" ID X 2" OD X .563 WIDE SHIELDED	4
13	1 IN SET COLLAR	1" SET COLLAR	2
14	HEX BOLT ~375-16 UNC_0~75_SIMP	HEX BOLT 3/8-16 X 3/4" GRADE -5	4
15	18976	Steel Clevis Pin 1/2" Dia, 1-1/4" Length, 1" Usable Length	1
16	18975	Zinc-Plated Steel Cotter Pin 1/8" Diameter, 1" Length	1
17	14207	MH40 ROLLER SUPPORT SHAFT REAR	2
18	12152	MH40 TROLLEY BRAKE WELDMENT	1
19	12154	MH40 TROLLEY BRAKE CAM WELDMENT	1
20	19007	EXTENSION SPRING	2

[illegible]

DISCONNECT BATTERY BEFORE ATTEMPTING ANY SERVICE





Section 6: Replacement Parts

6-1: Replacement Casters

FRONT: CAS002-781

REAR w/BRAKE: CAS084-894

6-2: Replacement Lift Cables

MH-400EA - 17823

MH-400EB - 17824

MH-400EC - 17825



AZTECH CONVERTING SYSTEMS

MH-400E USER MANUAL

7-1: Warranties & Provisions

WARRANTIES

All equipment manufactured and sold by AZTECH Converting Systems (Seller) is warranted to be free of defective materials and workmanship under normal use and service for a period of one (1) year from the date of delivery to Buyer's premises. All commercial components not manufactured by Seller carry the original manufacturer's warranty. At Seller's discretion, Seller may provide on-site warranty service for a period of ninety (90) days from the aforementioned date.

REMEDIES

If within the Warranty Period any such Equipment is proven to Seller's satisfaction to be defective in either material or workmanship, Seller, at its sole discretion, shall (a) repair or replace defective parts on the Equipment at Seller's cost, or (b) grant a reasonable allowance on account of such a breach. If within the Warranty Period the Seller receives notice from Buyer of defects in parts or materials. Seller will ship (ground, prepaid) replacement parts and invoice Buyer for the full cost of the replacement parts. Buyer will receive a Return Authorization (RMA) from seller, and return defective

Section 7: Warranties and Service

parts or materials to Seller, who at its sole discretion shall determine whether defective parts or materials are or are not subject to exclusion from this warranty as provided herein. Any defective parts or material not excluded from the Warranty Period will then be fully credited to Buyer.

EXCLUSIONS

THE FOLLOWING ITEMS ARE EXCLUDED FROM THIS WARRANTY.

- Defects or damage caused by careless or improper use.
- Parts that need periodic replacement from wear during normal operation.
- Routine maintenance and adjustment.
- Failure or damage caused by improper installation or inadequate maintenance by Buyer.
- Failure or damage caused by equipment modifications by Buyer.
- Equipment damage resulting from an accident, or abnormal conditions of operation.

DISCLAIMER

NO OTHER WARRANTY IS EXPRESSED OR IMPLIED INCLUDING WARRANTIES OF MERCHANTABILITY AND FITNESS FOR ANY PARTICULAR PURPOSE. SELLER IS NOT LIABLE FOR INCIDENTAL OR CONSEQUENTIAL

DAMAGE SUCH AS, BUT NOT LIMITED TO LOSS IN PROFITS, LOSS OF USE OF EQUIPMENT, OR INCREASED IN OPERATING COSTS OR EXPENSES.

7-2: Technical Service

In the event that your MH-400 is not functioning properly or if you have any technical questions, an AZTECH Technical Service representative is available to assist you. Contact information is as follows:

Phone: 1-800-829-8351

Fax: 1-480-998-5409

E-Mail: techservice@aztech-converting.com