



**AZTECH CONVERTING SYSTEMS**

212 W Lodge Drive

TEMPE, AZ 85283

PHONE (480) 951-8351

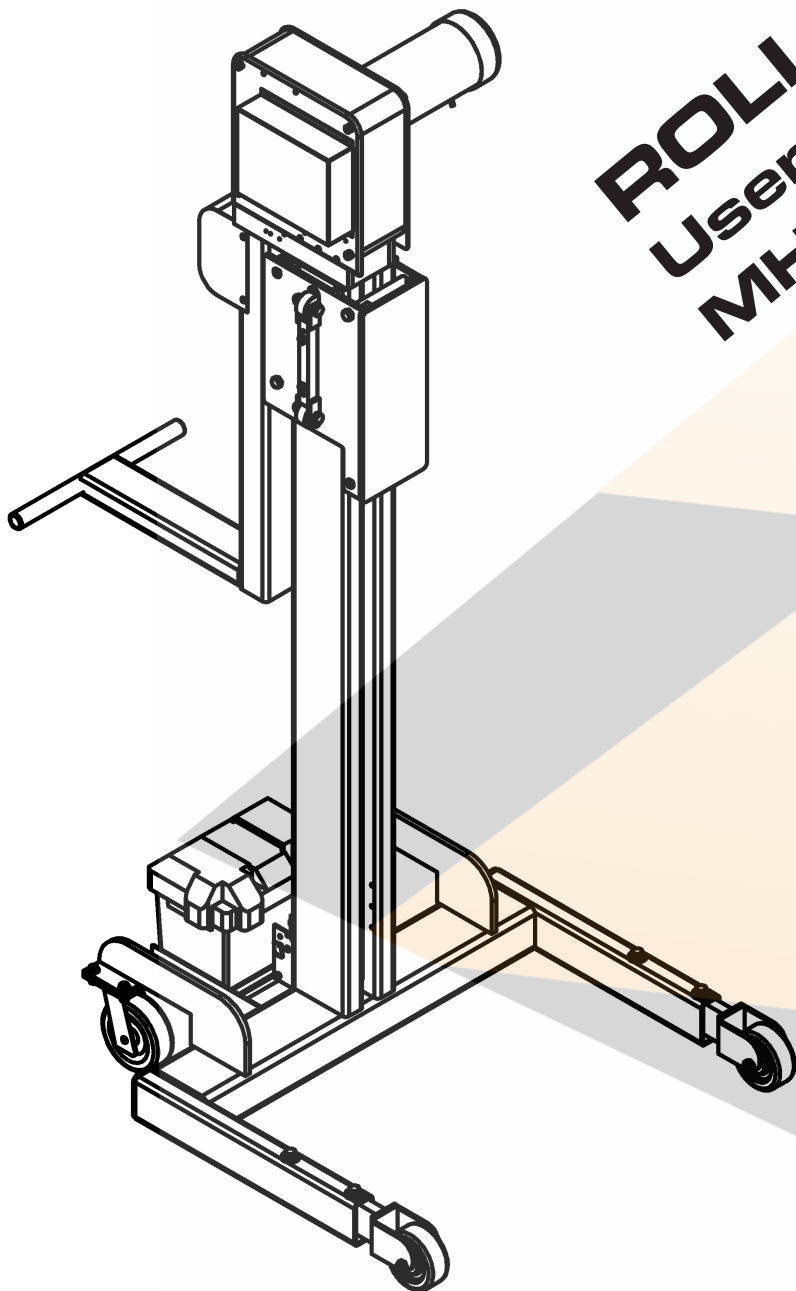
FAX (480) 998-5409

[www.aztechconverting.com](http://www.aztechconverting.com)

# **ROLL RUNNER**

## **User Manual**

### **MH-1500**





# **AZTECH CONVERTING SYSTEMS**

**MH-1500  
USER MANUAL**

---

## **TABLE OF CONTENTS**

<b>SECTION 1: GENERAL INFORMATION</b>	<b>1-4</b>
<b>SECTION 2: MACHINE SETUP</b>	<b>4</b>
<b>SECTION 3: MACHINE OPERATION</b>	<b>5-7</b>
<b>SECTION 4: MAINTENANCE AND REPAIRS</b>	<b>8</b>
<b>SECTION 5: CART DETAIL</b>	<b>9-16</b>
<b>SECTION 6: REPLACEMENT PARTS</b>	<b>17</b>
<b>SECTION 7: WARRANTIES AND SERVICE</b>	<b>18</b>



## Section 1: General Information

### 1-1: Introduction

The AZTECH RollRunner Model MH-1500 Roll Handling Cart is designed and manufactured to help reduce workplace injuries by performing various material handling functions utilizing AZTECH's innovative quick-change attachment system. The RollRunner with its all-steel construction and simplistic design will prove to be an invaluable product for your work environment and is sure to provide your company many years of safe, dependable service.

### 1-2: Machine Information and Specifications

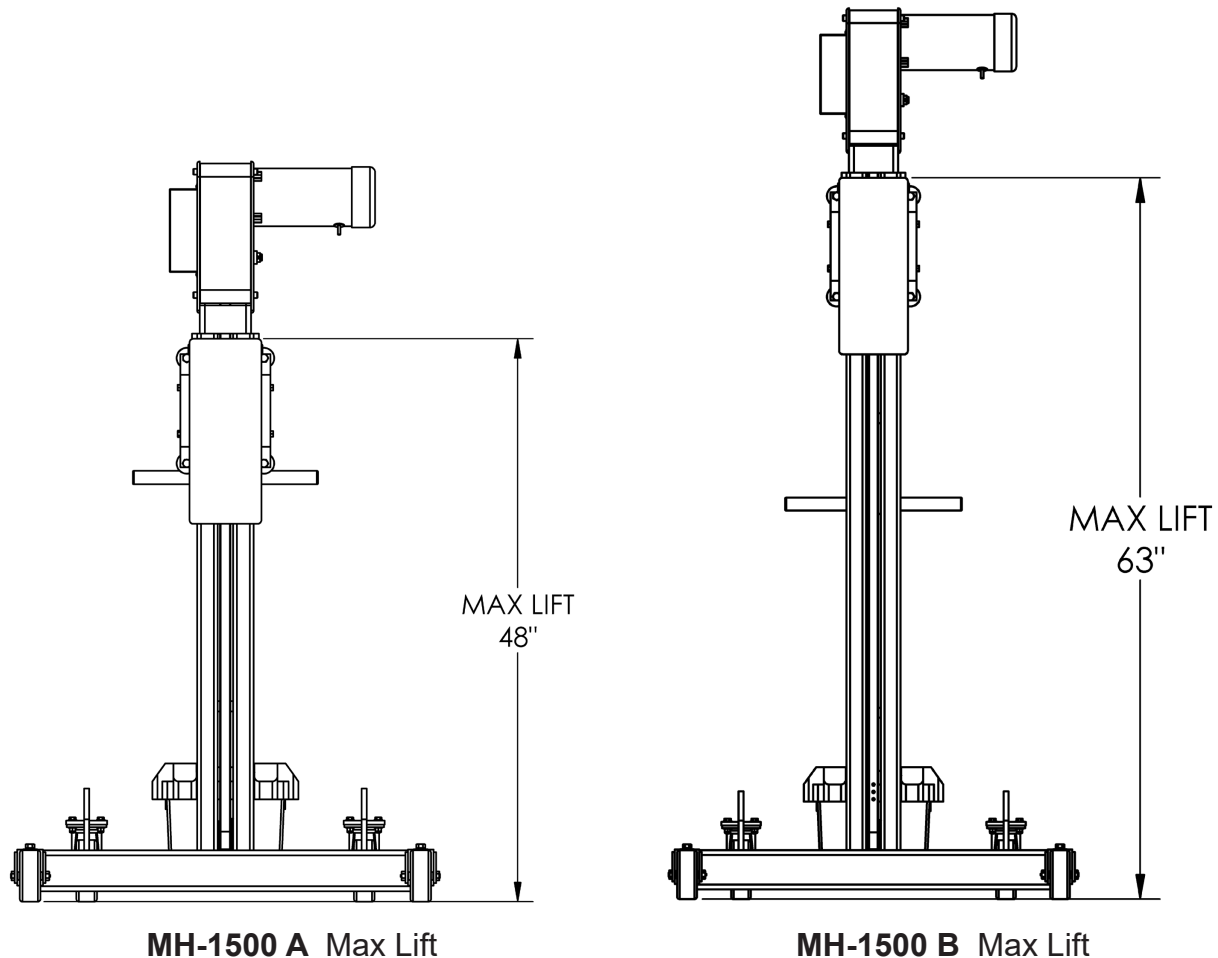


Fig. 1-1: MAX LIFT HEIGHTS

The MH-1500 operates on a chain and electric winch lift system. The lift height is limited by the height of the upright boom. Currently, two different standard lift heights are offered. They are the 1500A and 1500B. Their respective maximum lifts are shown in Fig. 1-1.



# AZTECH CONVERTING SYSTEMS

## MH-1500 USER MANUAL

### MH-1500A

**MAX LOAD:** 1500 LBS (680 kg)

**MAX Lift Height:** 48 (106 cm)

**Dimensions:** 28.25 X 34 X 57.25

All dimensions are inches unless otherwise specified

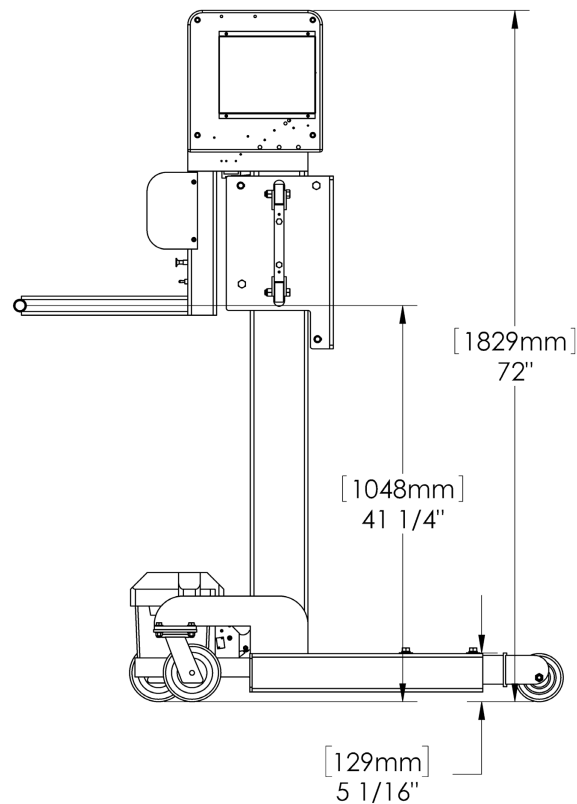
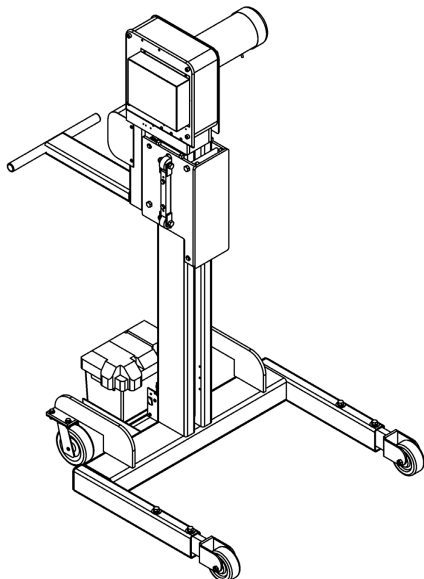
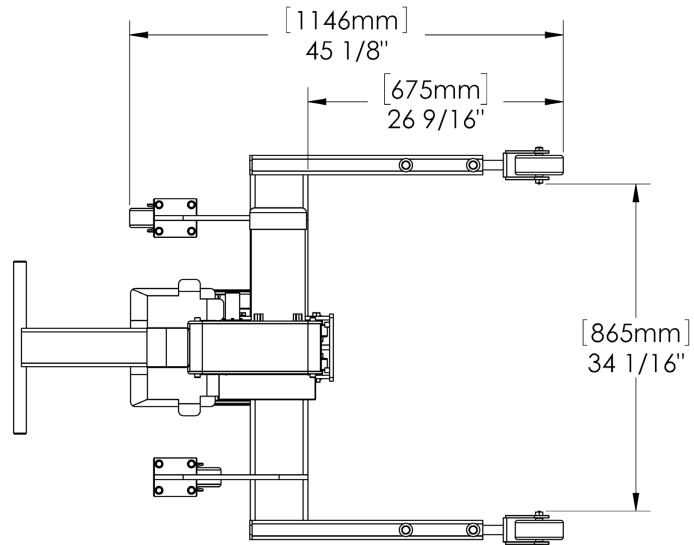
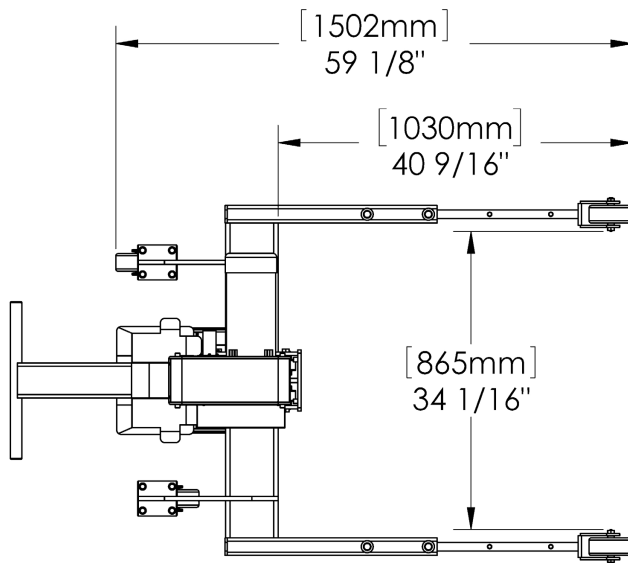


Fig. 1-2: THE MH-1500A

# AZTECH CONVERTING SYSTEMS

## MH-1500 USER MANUAL



### MH-1500B

**MAX LOAD:** 1500 LBS (680 kg)

**MAX Lift Height:** 63 (160 cm)

**Dimensions:** 28.25 X 34 X 50.75

All dimensions are inches unless otherwise specified

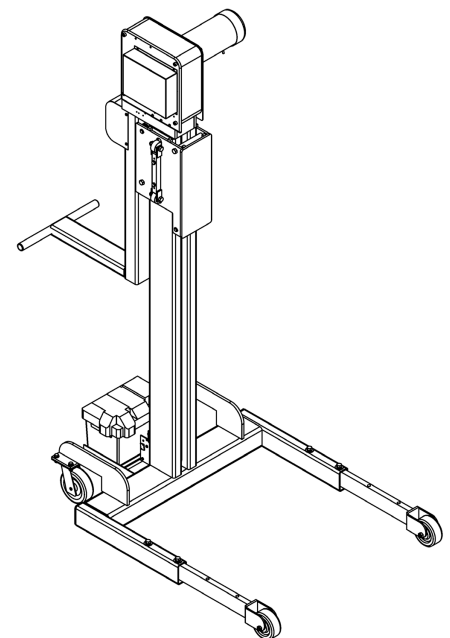
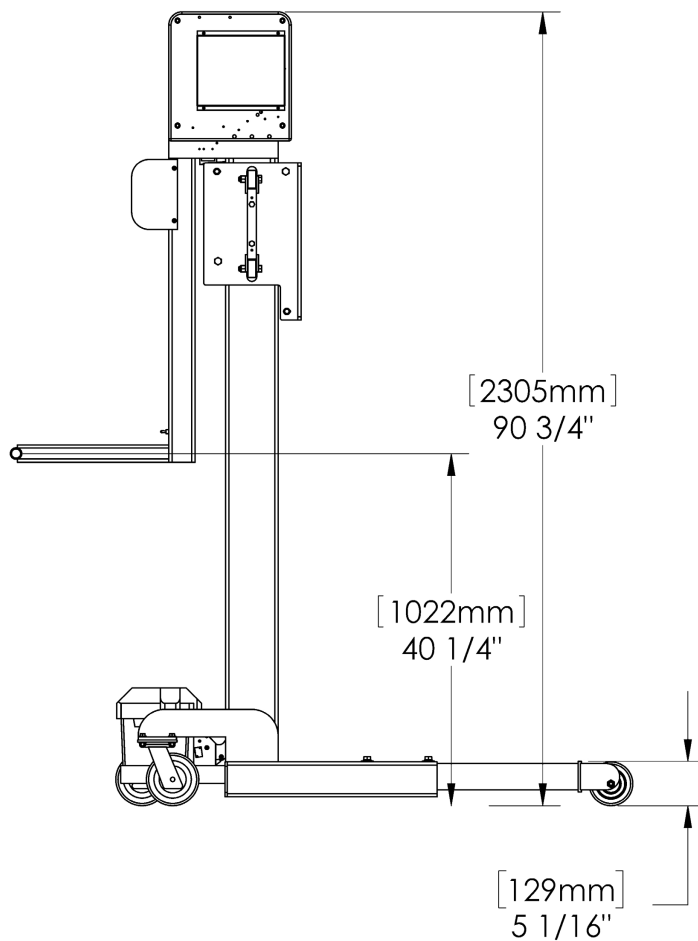


Fig. 1-3: THE MH-1500B



# AZTECH CONVERTING SYSTEMS

## MH-1500 USER MANUAL

---

### 1-3: Care and Maintenance

The RollRunner is relatively maintenance free, with the only scheduled maintenance being to grease the xerxe fitting monthly on the transmission and to charge and maintain water levels for the battery as needed.

### 1-4: Safety

The RollRunner MH1500 Series is equipped with an E-Stop Switch (see Figure 1-4) which may be used to shut off the power in the event of a machine malfunction . To shut off power, depress the switch, and to restore power pull the switch.

### NEVER:

- Operate the ROLL RUNNER without the safety cover.
- Lift load over people
- Exceed the 1500 LB weight limitation
- Use the ROLL RUNNER to transport people

## Section 2: Machine Setup

### 2-1: Uncrating & Inspection

After carefully removing your RollRunner from the crate, check to assure that all the bolts are tight and that no components have come loose during shipment. Carefully inspect all 4 wheels making sure they roll freely and are free of damage. If any visible damage has occurred in shipment, contact AZTECH immediately.



## Section 3: Machine Operation

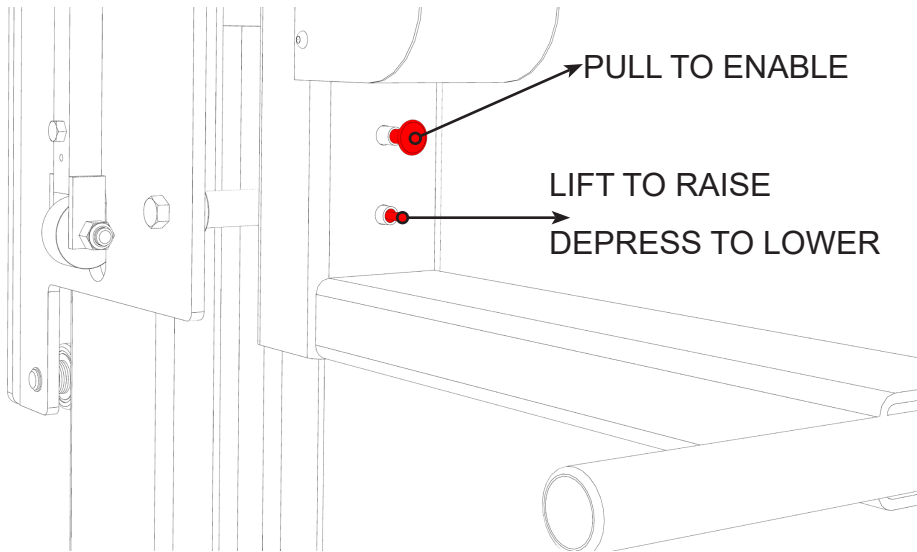


Fig. 3-1: MACHINE CONTROLS

### 3-1: Operating Lift

To operate the lift, pull the E-Stop knob to enable lift. Using the toggle switch immediately below, raise and lower the lift. ( See Figure 3-1)

There is a weight limit interrupt switch built in to the machine. If the lift will not raise, lower the carriage, inspect the load and retry.

### 3-2: Rear Wheel Safety Brakes

The RollRunner is equipped with back wheel safety brakes which are to be used to hold the cart in place once in desired position and as a safety feature to keep the cart from rolling while in the stationary position. To operate, simply press handle down and snap into place to activate brake, and lift to de-activate brake.

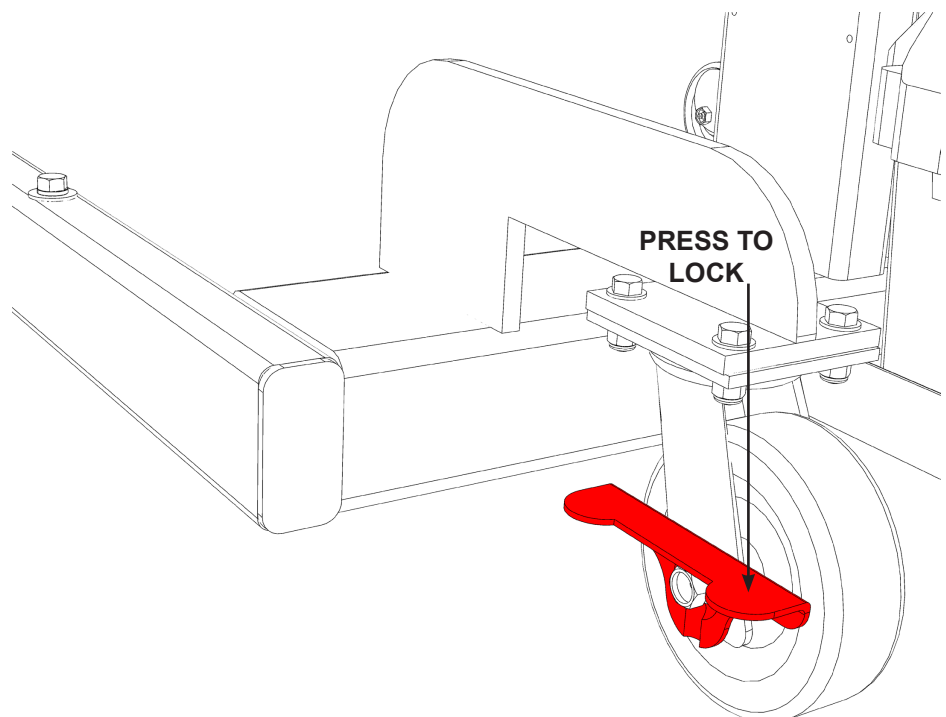


Fig. 3-2: THE SAFETY BRAKE



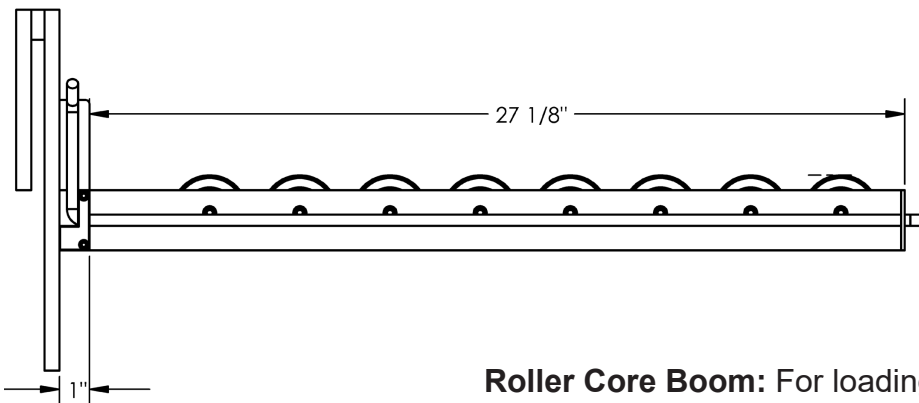
# AZTECH CONVERTING SYSTEMS

## MH-1500 USER MANUAL

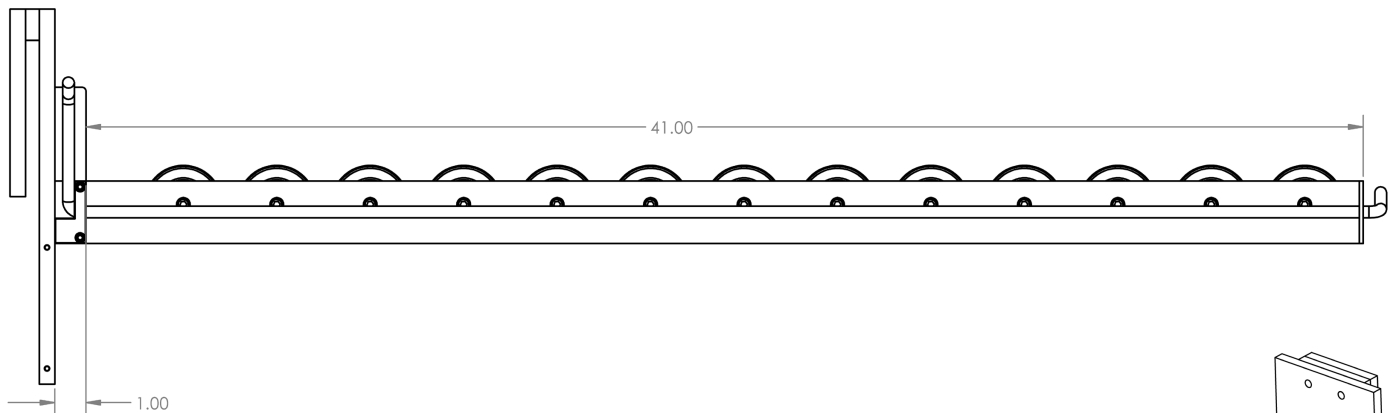
### 3-3 Changing Attachments

The Rollrunner utilizes a EZ Change Attachment System which makes it capable of performing numerous tasks. To change attachments, simply lift attachment off the trolley and lower into place making certain that retainer tab slides into the Slot at the top of the trolley.

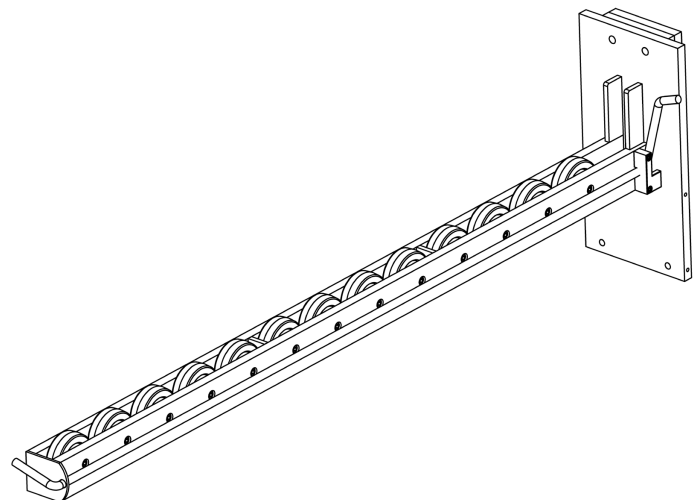
### 3-4: Available Attachments



**Roller Core Boom:** For loading and unloading rolls from the side position by supporting the roll through the roll's core.



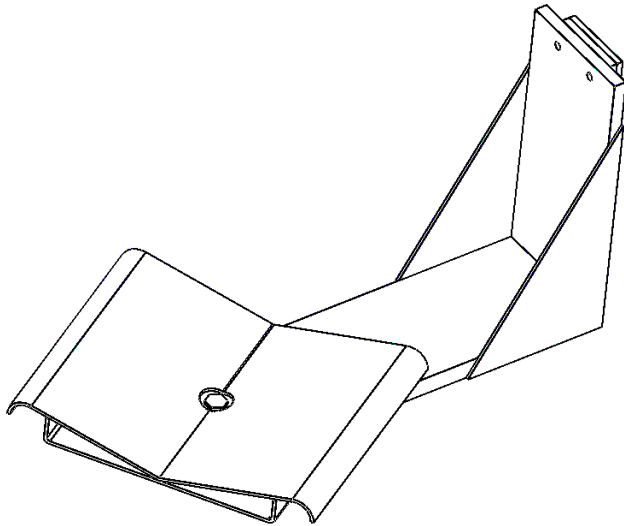
The Roller Core Boom may be ordered in several lengths to best fit your application. Contact your AZTECH service representative for more details.





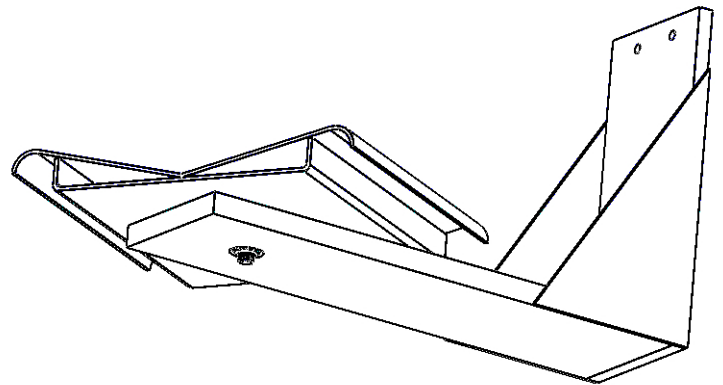
# AZTECH CONVERTING SYSTEMS

MH-1500  
USER MANUAL



## 360 Degree Swivel-Cradle:

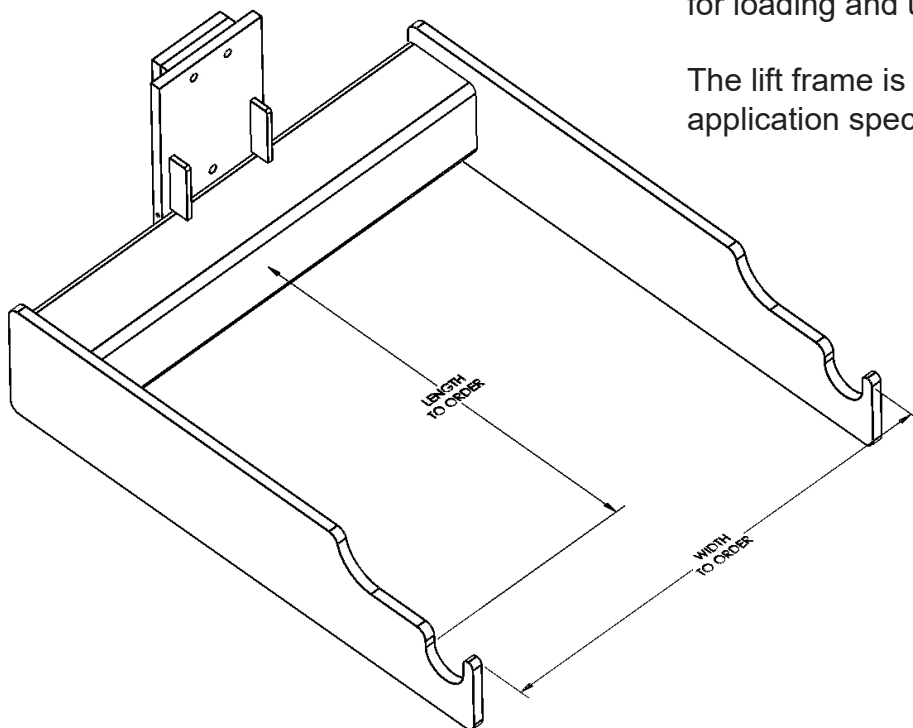
Supports the roll from the bottom and can be turned 360 degrees for precise alignment.



## TWO POINT LIFT:

Supports the roll through the arbor. Typically used for loading and unloading cradle-mount arbors.

The lift frame is made to order, dimensions are application specific.





# AZTECH CONVERTING SYSTEMS

## MH-1500 USER MANUAL

---

### Section 4: Maintenance and Repairs

#### 4-1 Periodic Inspections

To keep your RollRunner operating properly, AZTECH recommends performing the following periodic inspection:

- Inspect chain lift. If any wear or damage is found, replace chain immediately.
- Inspect the pulley on the trolley to assure that it turns easily.
- Inspect the lift attachment(s). If any cracks or damage is found, have the attachment repaired or replaced.
- Inspect the springs on the safety brake to assure they are connected at both ends.
- Inspect the toe brake on the rear heels for proper operation.

#### 4-2: Battery Recommendations

Due to shipping restrictions, your Roll Runner MH1500 does not come with a battery. Suitable 12V batteries are available from most auto part or hardware stores. Choose the model with the highest CCA (Cold Cranking Amps) rating. For longer life, a marine “deep cycle” battery is recommended.

Suggested models are:

- 24MD-DL
- 24DC

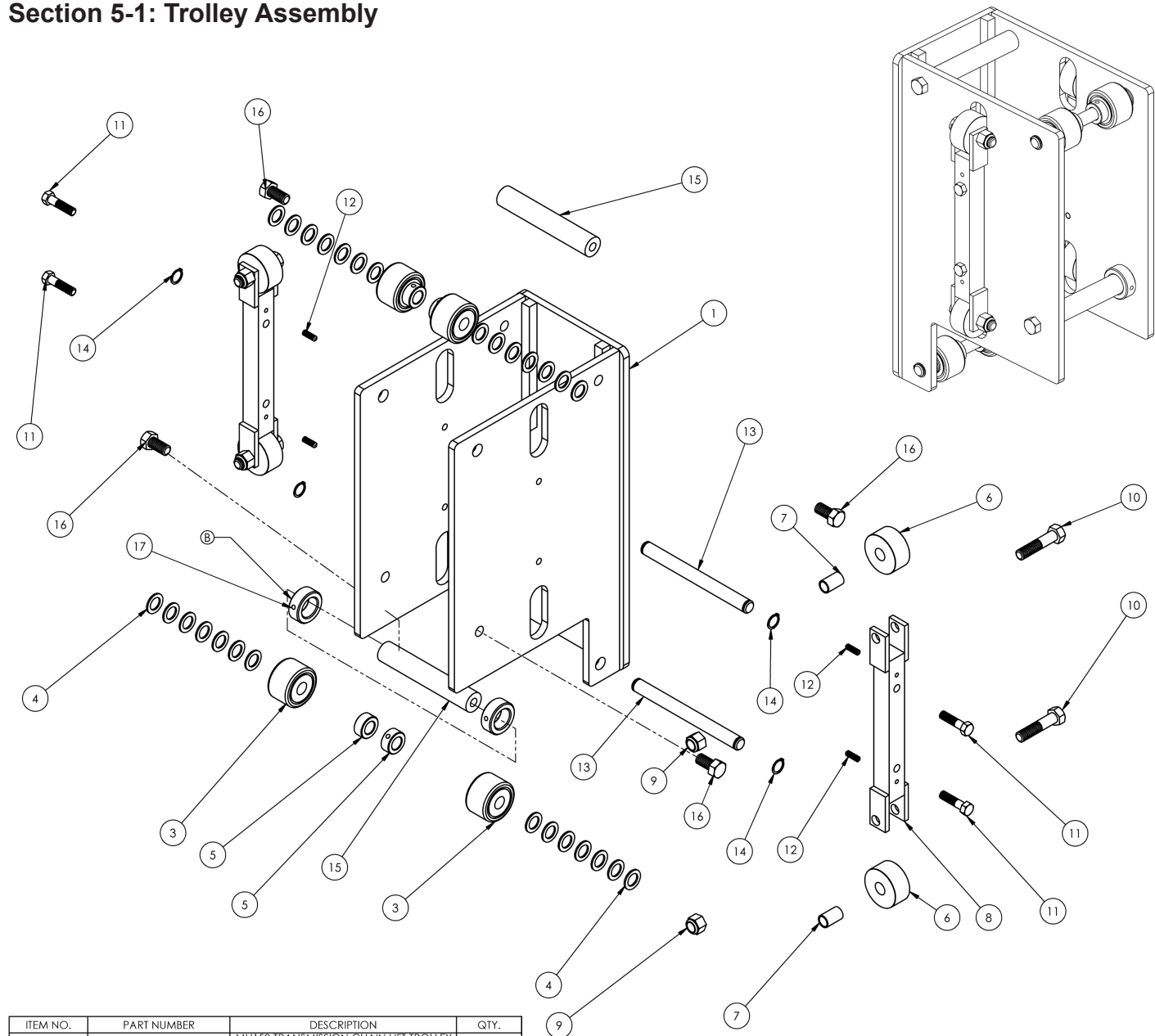
# AZTECH CONVERTING SYSTEMS

## MH-1500 USER MANUAL



### Section 5: Station Details

#### Section 5-1: Trolley Assembly



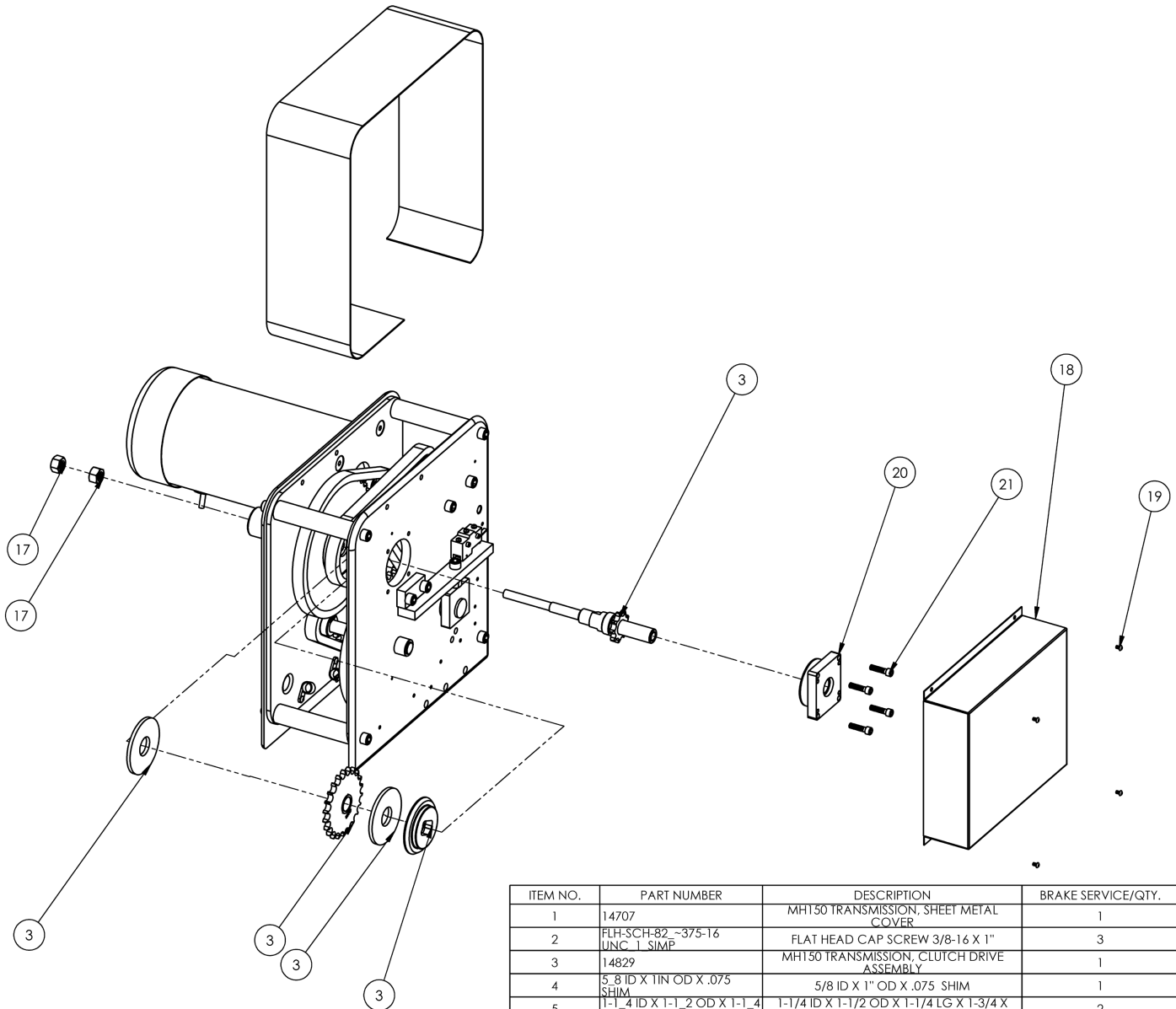
ITEM NO.	PART NUMBER	DESCRIPTION	QTY.
1	14991	MH150 TRANSMISSION CHAIN LIFT TROLLEY WELDMENT	1
2	14567	MH150 CHAIN LIFT TROLLEY CHAIN CLAMP PLATE	1
3	18965	2" DIA X 5/8ID CAM FOLLOWER	4
4	5_8-14GA N RIM WASHER	5/8 14 GA N RIM WASHER	28
5	18972	5/8 SET COLLAR	4
6	14571	MH150 CHAIN LIFT TROLLEY THRUST WHEEL	4
7	1_2 X 5_8 X 1 INCH	BUSHING 6391K215	4
8	14568	MH150 CHAIN LIFT TROLLEY THRUST PLATE WELDMENT	2
9	HEX NUT .500-13 UNC 0 LOCK	NYLOCK NUT 1/2-13	4
10	HEX BOLT .500-13 UNC 2-75 SIMP	HEX BOLT 1/2-13 X 2-1/4" GRADE 5	4
11	HEX BOLT .375-16 UNC 1-5 SIMP	HEX BOLT 3/8-16 X 1-1/2"	4
12	SSCR-HEX-CUP .250-20 UNC 0-75 SIMP	SOCKET SET SCREW 1/4-20 X 3/4"	4
13	14572	MH150 CHAIN LIFT TROLLEY BEARING SUPPORT SHAFT	2
14	CLIP-SH_SH-62	EXT 5/8 DIA SNAP RING	4
15	15054	MH150 TRANSMISSION CHAIN LIFT TROLLEY STANDOFF	2
16	HEX BOLT .500-13 UNC 1 SIMP	HEX BOLT 1/2-13 X 1"	4
17	1 IN SET COLLAR	1" SET COLLAR	2



# AZTECH CONVERTING SYSTEMS

## MH-1500 USER MANUAL

### Section 5-2: Transmission Assembly



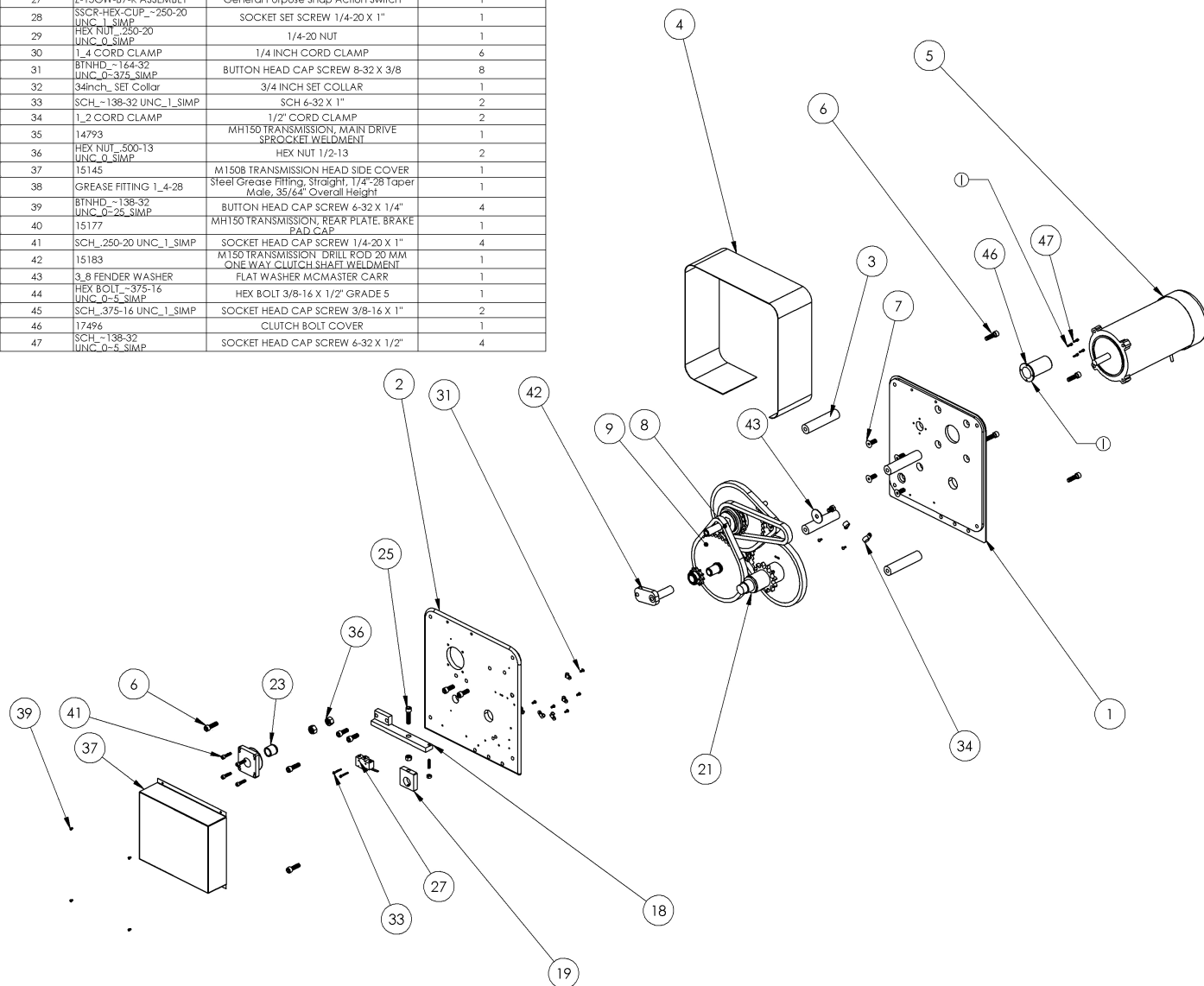
ITEM NO.	PART NUMBER	DESCRIPTION	BRAKE SERVICE/QT.Y.
1	14707	MH150 TRANSMISSION, SHEET METAL COVER	1
2	FLH-SCH-82 ~375-16 UNC_1_SIMP	FLAT HEAD CAP SCREW 3/8-16 X 1"	3
3	14829	MHT50 TRANSMISSION, CLUTCH DRIVE ASSEMBLY	1
4	5.8 ID X 1" IN OD X .075 SHIM	5/8 ID X 1" OD X .075 SHIM	1
5	1-1/4 ID X 1-1/2 OD X 1-1/4 LG X 1-3/4 X 3/16 FLANGED	1-1/4 ID X 1-1/2 OD X 1-1/4 LG X 1-3/4 X 3/16 FLANGED	2
6	3.4 ID X 1" IN OD X 1" LG X 1-1/4 X 3.16 FLANGE	3/4 ID X 1" OD X 1" LG X 1-1/4 OD X 3/16 FLANGED	1
7	14864	MHT50 TRANSMISSION, SECONDARY SHAFT BUSHING MODIFIED	1
8	SCH_~375-16 UNC_1_SIMP	SOCKET HEAD CAP SCREW 3/8-16 X 1"	2
9	SCH_~375-16 UNC_1-5_SIMP	SOCKET HEAD CAP SCREW 3/8-16 X 1-1/2"	1
10	HEX NUT_~375-16 UNC_0_SIMP	HEX NUT 3/8-16	1
11	Z-15GW-B7-K ASSEMBLY	General Purpose Snap Action Switch	1
12	SSCR-HEX-CUP_~250-20 UNC_1_SIMP	SOCKET SET SCREW 1/4-20 X 1"	1
13	HEX NUT_~250-20 UNC_0_SIMP	1/4-20 NUT	1
14	1.4 CORD CLAMP	1/4 INCH CORE CLAMP	3
15	BTNHD_~164-32 UNC_0-25_SIMP	BUTTON HEAD CAP SCREW 8-32 X 3/8	3
16	34inch_SET Collar	3/4 INCH SET COLLAR	1
17	HEX NUT_~500-13 UNC_0_SIMP	HEX NUT 1/2-13	2
18	15145	M150B TRANSMISSION HEAD SIDE COVER	1
19	BTNHD_~164-32 UNC_0-25_SIMP	BUTTON HEAD CAP SCREW 6-32 X 1/4"	4
20	15177	MHT50 TRANSMISSION, REAR PLATE. BRAKE PAD CAP	1
21	SCH_~250-20 UNC_1_SIMP	SOCKET HEAD CAP SCREW 1/4-20 X 1"	4
22	17496	CLUTCH BOLT COVER	1
23	SCH_~138-32 UNC_0-5_SIMP	SOCKET HEAD CAP SCREW 6-32 X 1/2"	4

# AZTECH CONVERTING SYSTEMS

## MH-1500 USER MANUAL



ITEM NO.	PART NUMBER	DESCRIPTION	CHAIN LIFT/ QTY.
1	14705	MH150 TRANSMISSION, FRONT PLATE	1
2	14704	MH150 TRANSMISSION, REAR PLATE	1
3	14706	MH150 TRANSMISSION, STANDOFF	4
4	14707	MH150 TRANSMISSION, SHEET METAL COVER	1
5	leeson C4D17FK7D	12VDC, RPM 1800, HP3/4	1
6	SCH_-375-16 UNC_1-5_SIMP	SOCKET HEAD CAP SCREW 3/8-16 X 1-1/4"	8
7	FLH-SCH-82_-375-16 UNC_1_SIMP	FLAT HEAD CAP SCREW 3/8-16 X 1"	4
8	14829	MH150 TRANSMISSION, CLUTCH DRIVE ASSEMBLY	1
9	14797	MH150 TRANSMISSION, SECONDARY SHAFT WELDMENT	1
10	40BS9 5_8	40BS9 5/8 BORE WITH KEY 40 ROLLER CHAIN	1
11	14835	MH150 TRANSMISSION, SPROCKET ONE WAY CLUTCH ASSEMBLY	1
12	5_8 ID X 7_8 OD X 1-1_4 LG X 1-1_8 X 1_8 FLANGED	5/8 ID X 7/8 OD X 1-1/4 LG X 1-1/8 X 1/8 FLANGED OILITE	2
13	5_8 ID X 1 IN OD X .075 SHIM	5/8 ID X 1" OD X .075 SHIM	3
14	40 CHAIN MOTOR TO 1ST SPROCKET	40 ROLLER CHAIN	1
15	40 CHAIN 1ST SHAFT TO 2ND SHAFT	40 ROLLER CHAIN	1
16	40 CHAIN CLUTCH TO BRAKE	40 ROLLER CHAIN	1
17	40 CHAIN 3RD TO 4TH SPROCKET	40 ROLLER CHAIN	1
18	14775	MH150 TRANSMISSION, LOAD CELL WELDMENT	1
19	14838	MH150 TRANSMISSION, LOAD CELL CHAFT SPT BLOCK	1
20	14837	MH150 TRANSMISSION, CABLE HUB SPT SHAFT	1
21	1-1_4 ID X 1-1_2 OD X 1-1_4 LG X 1-3_4 X 3_16 FLANGED	1-1/4 ID X 1-1/2 OD X 1-1/4 LG X 1-3/4 X 3/16 FLANGED	2
22	3_4 ID X 1 IN OD X 1 IN LG X 1-1_4 X 3_16 FLANGE	3/4 ID X 1" OD X 1" LG X 1-1/4 OD X 3/16 FLANGED	1
23	14864	MH150 TRANSMISSION, SECONDARY SHAFT BUSHING MODIFIED	1
24	SCH_-375-16 UNC_1_SIMP	SOCKET HEAD CAP SCREW 3/8-16 X 1"	2
25	SCH_-375-16 UNC_1-5_SIMP	SOCKET HEAD CAP SCREW 3/8-16 X 1-1/2"	1
26	HEX NUT_-375-16 UNC_0_SIMP	HEX NUT 3/8-16	1
27	Z-15GW-87-K ASSEMBLY	General Purpose Snap Action Switch	1
28	SSCR-HEX-CUP_-250-20 UNC_0_SIMP	SOCKET SET SCREW 1/4-20 X 1"	1
29	HEX NUT_-250-20 UNC_0_SIMP	1/4-20 NUT	1
30	1_4 CORD CLAMP	1/4 INCH CORD CLAMP	6
31	BTNHD_-164-32 UNC_0-375_SIMP	BUTTON HEAD CAP SCREW 8-32 X 3/8	8
32	34inch_ SET Collar	3/4 INCH SET COLLAR	1
33	SCH_-138-32 UNC_1_SIMP	SCH 6-32 X 1"	2
34	1_2 CORD CLAMP	1/2" CORD CLAMP	2
35	14793	MH150 TRANSMISSION, MAIN DRIVE SPROCKET WELDMENT	1
36	HEX NUT_-500-13 UNC_0_SIMP	HEX NUT 1/2-13	2
37	15145	M150B TRANSMISSION HEAD SIDE COVER	1
38	GREASE FITTING 1_4-28	Steel Grease Fitting, Straight, 1/4"-28 Taper Male, 35/64" Overall Height	1
39	BTNHD_-138-32 UNC_0-25_SIMP	BUTTON HEAD CAP SCREW 6-32 X 1/4"	4
40	15177	MH150 TRANSMISSION, REAR PLATE, BRAKE PAD CAP	1
41	SCH_-250-20 UNC_1_SIMP	SOCKET HEAD CAP SCREW 1/4-20 X 1"	4
42	15183	M150 TRANSMISSION, DRILL ROD 20 MM ONE WAY CLUTCH SHAFT WELDMENT	1
43	3_8 FENDER WASHER	FLAT WASHER MCMASTER CARR	1
44	HEX BOLT_-375-16 UNC_0-5_SIMP	HEX BOLT 3/8-16 X 1/2" GRADE 5	1
45	SCH_-375-16 UNC_1_SIMP	SOCKET HEAD CAP SCREW 3/8-16 X 1"	2
46	17496	CLUTCH BOLT COVER	1
47	SCH_-138-32 UNC_0-5_SIMP	SOCKET HEAD CAP SCREW 6-32 X 1/2"	4

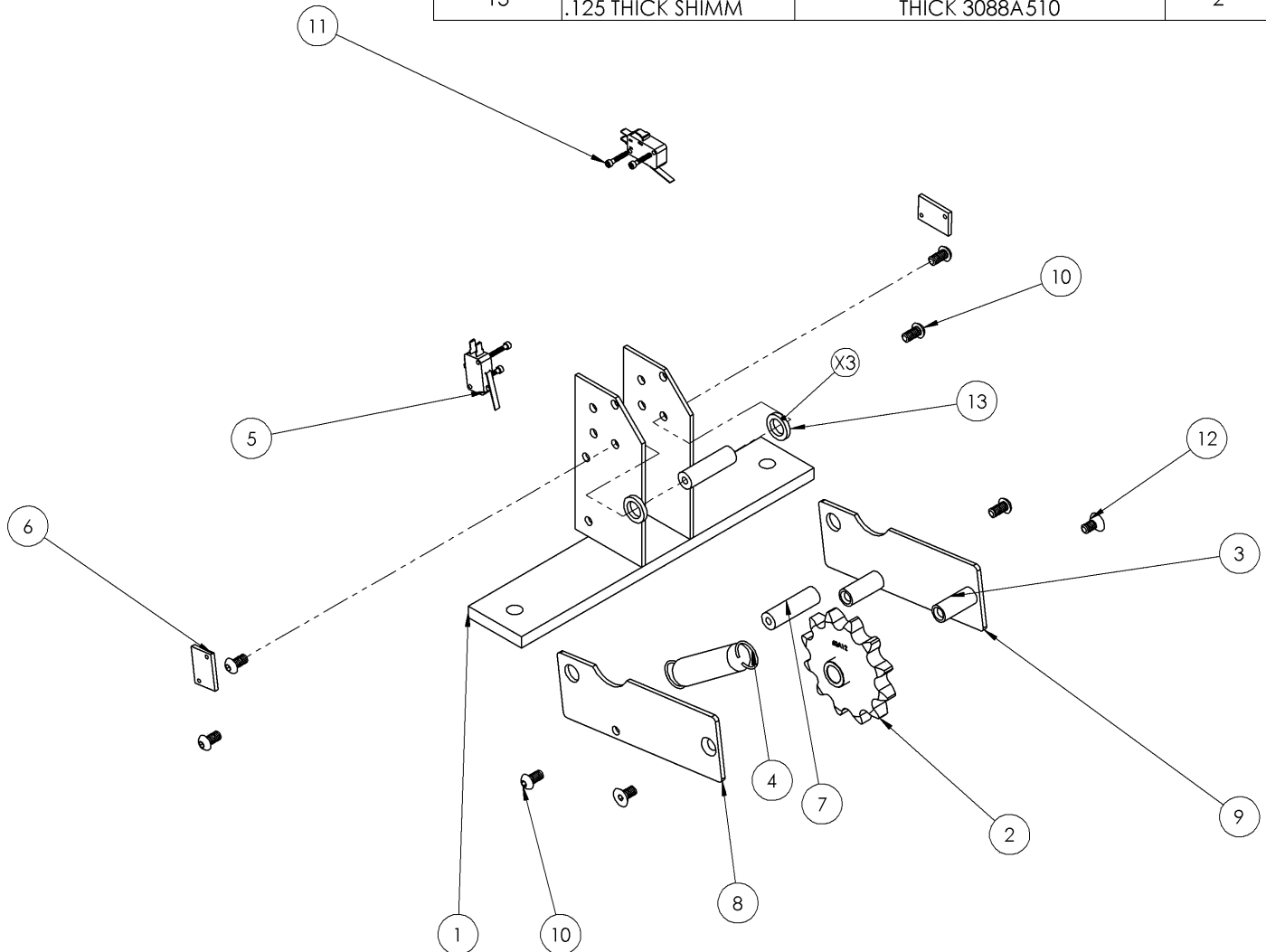




# AZTECH CONVERTING SYSTEMS

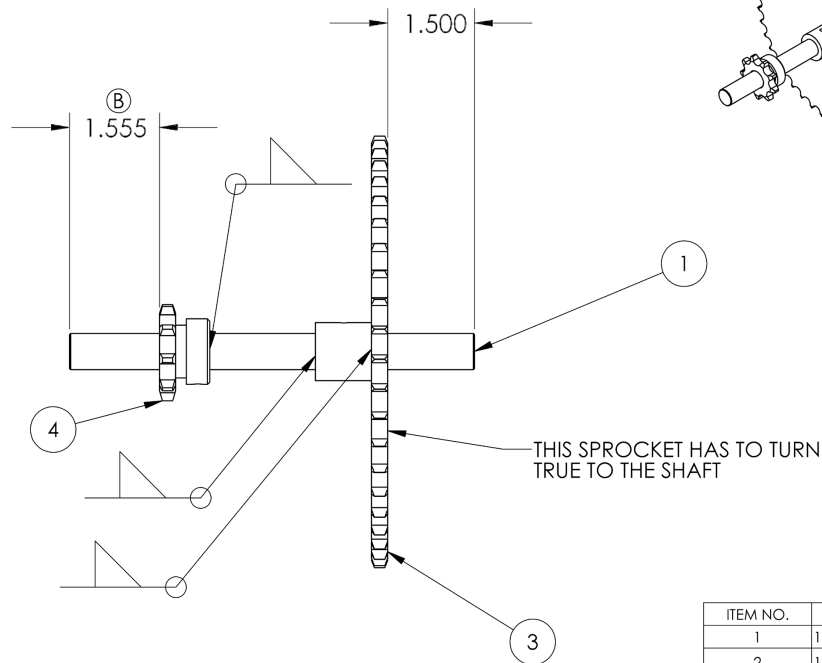
## MH-1500 USER MANUAL

ITEM NO.	PART NUMBER	DESCRIPTION	QTY.
1	18035	MH150B TRANSMISION CHAIN LIFT LOWER SPROCKET WELDMENT 2012	1
2	18036	MH150B TRANSMISION CHAIN LIFT LOWER SPROCKET ASSEMBLY	1
3	15011	MH150B TRANSMISION CHAIN LIFT LOWER SPROCKET SHAFT	2
4	18041	STERLING SPRING 1832K29	1
5	6X292	Switch,Snap Action With lever	2
6	15237	MH150B TRANSMISION CHAIN LIFT LOWER SWITCH CLAMP PLATE	2
7	18042	MH150B TRANSMISION LOWER SPROCKET BASE STAND OFF	2
8	18037	MH150B TRANSMISION CHAIN LIFT LOWER SPROCKET SIDE PLATE	1
9	18038	MH150B TRANSMISION LOWER SPROCKET SIDE PLATE LEFT	1
10	BTNHD_~250-20 UNC_0~5_SIMP	BUTTON HEAD CAP SCREW 1/4-20 X 1/2"	6
11	SCH_~112-40 UNC_0~625_SIMP	SOCKET HEAD CAP SCREW 4-40-5/8"	4
12	FLH-SCH-82_~250-20 UNC_0~5_SIMP	FLAT HEAD CAP SCREW 1/4-20 X 1/2"	2
13	1_2 ID X 3_4 X OD X .125 THICK SHIMM	ARBOR SHIM 1/2 ID X 3/4 OD X .125 THICK 3088A510	2



# AZTECH CONVERTING SYSTEMS

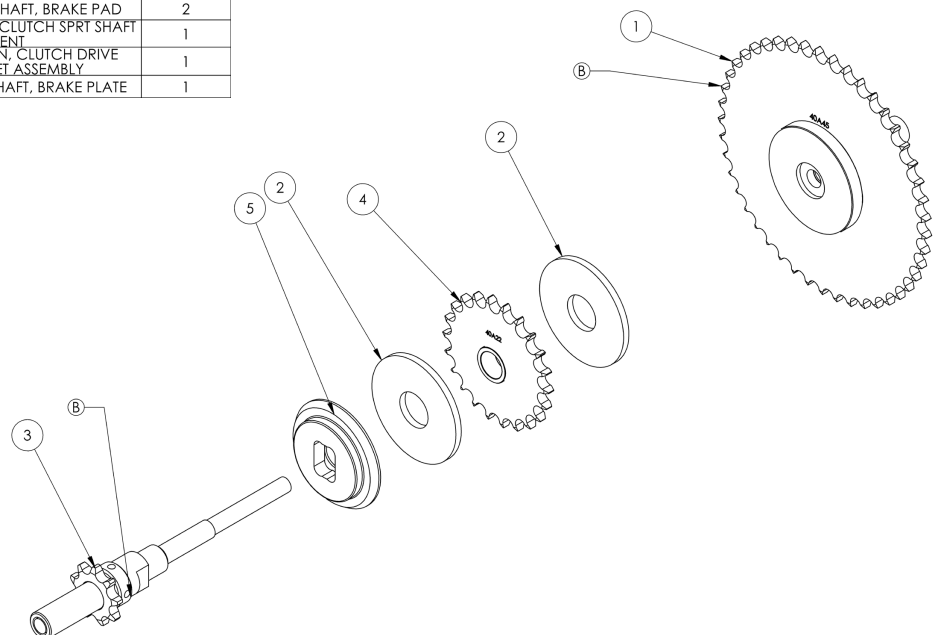
## MH-1500 USER MANUAL



ITEM NO.	PART NUMBER	DESCRIPTION	QTY.
1	14798	MH150 TRANSMISSION, SECONDARY SHAFT	1
2	14799	MH150 TRANSMISSION, SECONDARY SHAFT, MACHINED HUB	1
3	40A45	40A45	1
4	40BS9 5_8 WO KEYWAY	40BS9 5/8 BORE 40 ROLLER CHAIN 6793K208	1

### Section 5-3: Sprocket Assembly

ITEM NO.	PART NUMBER	DESCRIPTION	QTY.
1	14783	MH150 TRANSMISSION, CLUTCH DRIVE WELDMENT	1
2	14493	M150 WINCH JACK SHAFT, BRAKE PAD	2
3	14832	MH150 TRANSMISSION, CLUTCH SPRT SHAFT WELDMENT	1
4	14831	MH150 TRANSMISSION, CLUTCH DRIVE BRAKE SPROCKET ASSEMBLY	1
5	14509	M150 WINCH JACK SHAFT, BRAKE PLATE	1





# AZTECH CONVERTING SYSTEMS

## MH-1500 USER MANUAL

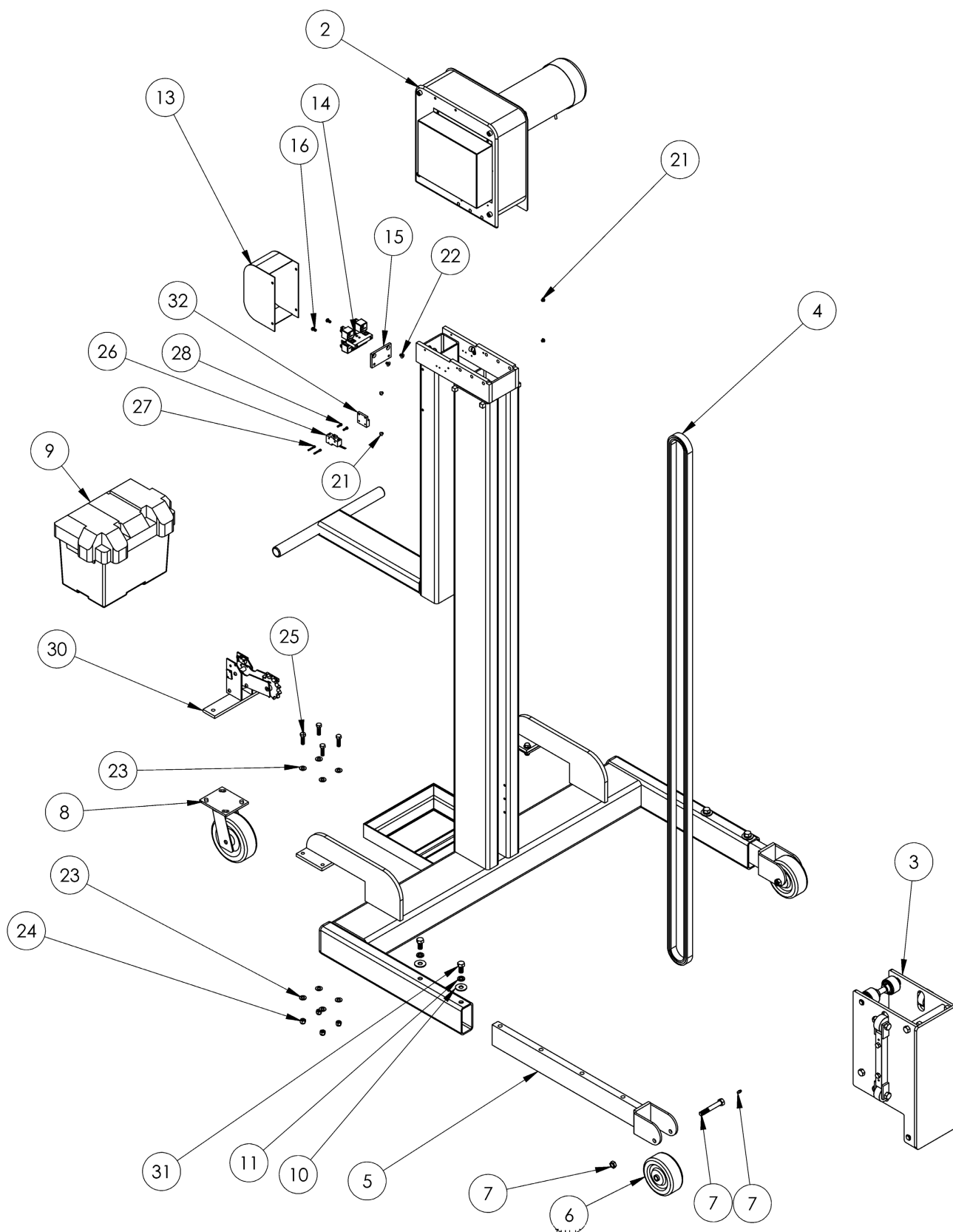
### Section 5-4: Cart Assembly

ITEM NO.	PART NUMBER	DESCRIPTION	Default/ QTY.
1	EXP4352	MH1500B CUSTOM, 45" INSIDE LEG CLEARANCE, FRAME WELDMENT	1
2	14703	MH150 TRANSMISSION, MAIN ASSEMBLY	1
3	14990	MH150 TRANSMISSION CHAIN LIFT TROLLEY ASSEMBLY	1
4	14985 60 ROLLER CHAIN	60 ROLLER CHAIN	1
5	13054	M150 ADJUSTABLE LEG WENDMENT	2
6	2 x 5 PHENOLIC WHEEL ASSEMBLY	NAME	2
7	1050-532Z-BOLT ASSEMBLY	NAME	2
8	6in CASTER ASSM		2
9	BATTERY BOX		1
10	WSHR A_.500N	WASHER 1/2 N	4
11	WSHR A_.500 LOCK	1/2 LOCK WASHER	4
12	1_2 CORD CLAMP	1/2" CORD CLAMP	3
13	14996	MH80 DETACHABLE FRAME, SOLENOID COVER WELDMENT	1
14	15375	RELAY MOUNT BRACKET ASSEMBLY	1
15	14999	MH80 DETACHABLE FRAME, SOLENOID MOUNT PLATE	1
16	BTNHD_~250-20 UNC_0~5_SIMP	BUTTON HEAD CAP SCREW 1/4-20 X 1/2"	2
17	BTNHD_~164-32 UNC_0~375_SIMP	BUTTON HEAD CAP SCREW 8-32 X 3/8	1
18	HEX NUT_.164-32 UNC_0_SIMP	8-32 NUT	2
19	BTNHD_~164-32 UNC_0~75_SIMP	BUTTON HEAD CAP SCREW GRADE 5 8-32 X 3/4"	1
20	BTNHD_~250-20 UNC_0~75_SIMP	BUTTON HEAD CAP SCREW 1/4-20 X 3/4"	3
21	BTNHD_~250-20 UNC_0~25_SIMP	BUTTON HEAD CAP SCREW 1/4-20 X 1/4"	4
22	FLH-SCH-82_~250-20 UNC_0~375_SIMP	FLAT HEAD CAP SCREW 1/4-20 X 3/8"	2
23	WSHR A_.375N	WASHER 3/8 N	16
24	HEX NUT_.375-16 UNC_0_LOCK	NYLOCK NUT 3/8-16	8
25	HEX BOLT_~375-16 UNC_1~25_SIMP	HEX BOLT GRADE 5, 3/8-16 X 1-1/4	8
26	Z-15GW-B7-K ASSEMBLY	General Purpose Snap Action Switch	1
27	SCH_~138-32 UNC_1_SIMP	SCH 6-32 X 1"	2
28	SCH_~164-32 UNC_0~5_SIMP	SOCKET HEAD CAP SCREW 8-32 X 1/2"	2
29	15189	Switch Function Momentary On/Off/Momentary On, SPDT	1
30	18034	MH150B TRANSMISSION CHAIN LIFT LOWER SPROCKET ASSEMBLY 2012	1
31	HEX BOLT_~500-13 UNC_1_SIMP	HEX BOLT 1/2-13 X 1"	4
32	14173	MH LOAD CELL SPACER BLOCK	1



# AZTECH CONVERTING SYSTEMS

MH-1500  
USER MANUAL







## Section 6: Replacement Parts

### 6-1: Replacement Casters

FRONT: CAS000-805

REAR w/BRAKE: CAS004-317

### 6-2: Replacement Electrical Components

Up/Down Relays: 979-1C-12DE (American Zettler)

Load Limit Switch: Z-15GW-B7-K (Omron)

Up/Down Switch: 6X29ZG (Carling)

Load Cell Relay: BU-5083-0000 (American Zettler)



# AZTECH CONVERTING SYSTEMS

## MH-1500 USER MANUAL

---

### Section 7: Warranties and Service

#### 7-1: Warranties & Provisions

##### WARRANTIES

All equipment manufactured and sold by AZTECH Converting Systems (Seller) is warranted to be free of defective materials and workmanship under normal use and service for a period of one (1) year from the date of delivery to Buyer's premises. All commercial components not manufactured by Seller carry the original manufacturer's warranty. At Seller's discretion, Seller may provide on-site warranty service for a period of ninety (90) days from the aforementioned date.

##### REMEDIES

If within the Warranty Period any such Equipment is proven to Seller's satisfaction to be defective in either material or workmanship, Seller, at its sole discretion, shall (a) repair or replace defective parts on the Equipment at Seller's cost, or (b) grant a reasonable allowance on account of such a breach. If within the Warranty Period the Seller receives notice from Buyer of defects in parts or materials. Seller will ship (ground, prepaid) replacement parts and invoice Buyer for the full cost of the replacement parts). Buyer will receive a Return Authorization (RA) from seller, and return defective parts or materials to Seller, who at its sole discretion shall deter-

mine whether defective parts or materials are or are not subject to exclusion from this warranty as provided herein. Any defective parts or material not excluded from the Warranty Period will then be fully credited to Buyer.

##### EXCLUSIONS

THE FOLLOWING ITEMS ARE EXCLUDED FROM THIS WARRANTY.

- Defects or damage caused by careless or improper use.
- Parts that need periodic replacement from wear during normal operation.
- Routine maintenance and adjustment.
- Failure or damage caused by improper installation or inadequate maintenance by Buyer.
- Failure or damage caused by equipment modifications by Buyer.
- Equipment damage resulting from an accident, or abnormal conditions of operation.

##### DISCLAIMER

NO OTHER WARRANTY IS EXPRESSED OR IMPLIED INCLUDING WARRANTIES OF MERCHANTABILITY AND FITNESS FOR ANY PARTICULAR PURPOSE. SELLER IS NOT LIABLE FOR INCIDENTAL OR CONSEQUENTIAL DAMAGE SUCH AS, BUT NOT LIMITED TO LOSS IN

PROFITS, LOSS OF USE OF EQUIPMENT, OR INCREASED IN OPERATING COSTS OR EXPENSES.

#### 7-2: Technical Service

In the event that your MH-1500 is not functioning properly or if you have any technical questions, an AzTech Technical Service representative is available to assist you. Contact information is as follows:

**Phone:** 1-800-829-8351

**Fax:** 1-480-998-5409

**E-Mail:** [techservice@aztech-converting.com](mailto:techservice@aztech-converting.com)