



**AZTECH CONVERTING SYSTEMS**

212 W Lodge Drive

TEMPE, AZ 85283

PHONE (480) 951-8351

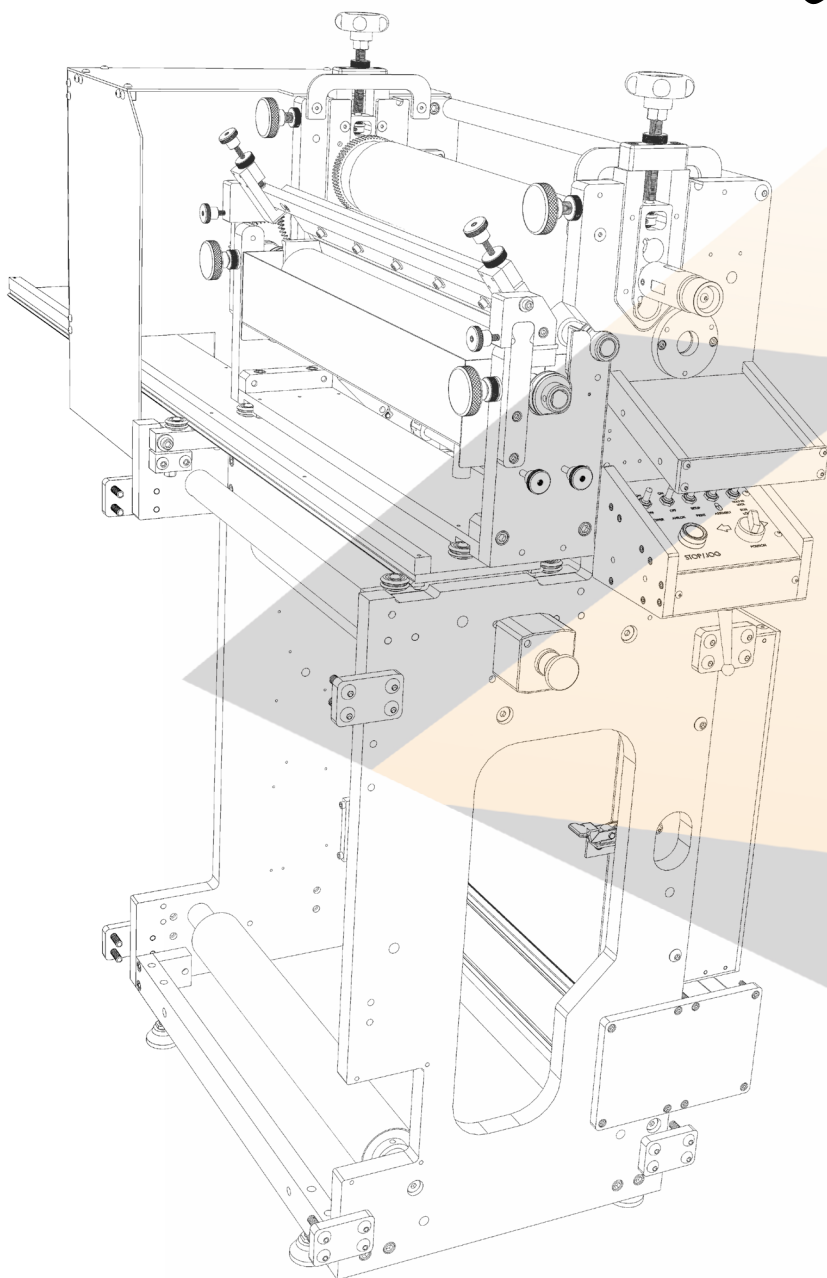
FAX (480) 998-5409

[www.aztechconverting.com](http://www.aztechconverting.com)

# **FLEXO PRINTER**

## **User Manual**

### **FP-13, 18, 20**





# **AZTECH CONVERTING SYSTEMS**

**FP-XX  
USER MANUAL**

---

## **TABLE OF CONTENTS**

<b>SECTION 1: GENERAL INFORMATION</b>	<b>1</b>
<b>SECTION 2: MACHINE INSTALLATION</b>	<b>2</b>
<b>SECTION 3: MACHINE SETUP</b>	<b>3-7</b>
<b>SECTION 4: STATION DETAIL</b>	<b>8-13</b>
<b>SECTION 5: WARRANTIES AND SERVICE</b>	<b>14</b>

# AZTECH CONVERTING SYSTEMS

## Flexographic Printer FP-XX USER MANUAL



### Section 1: General Information

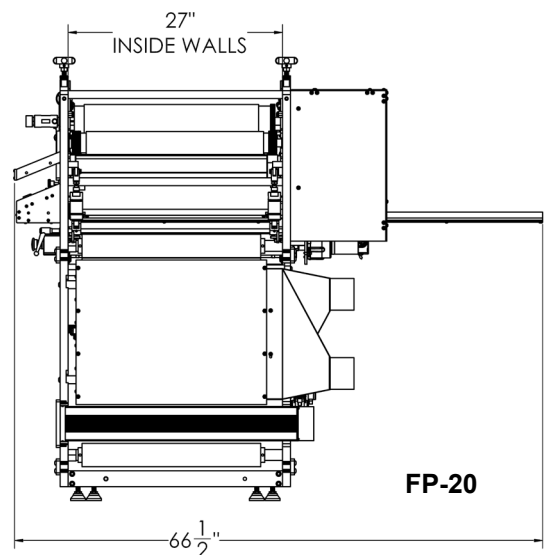
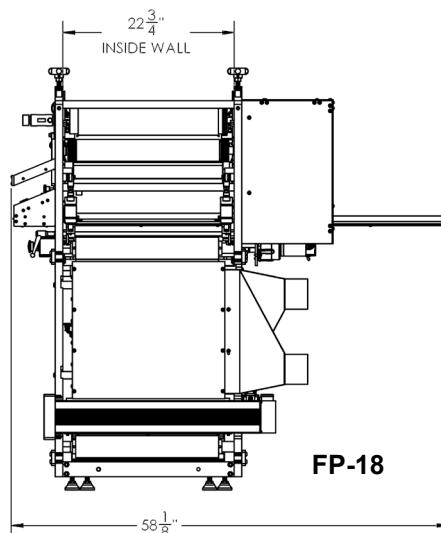
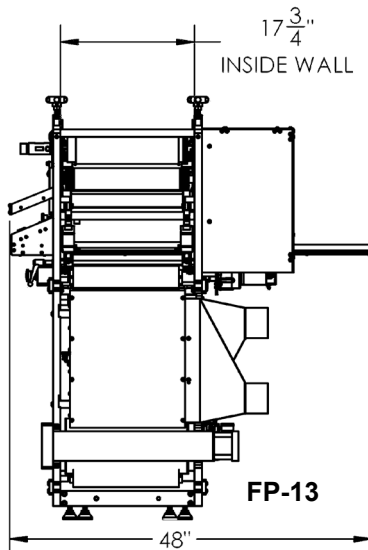
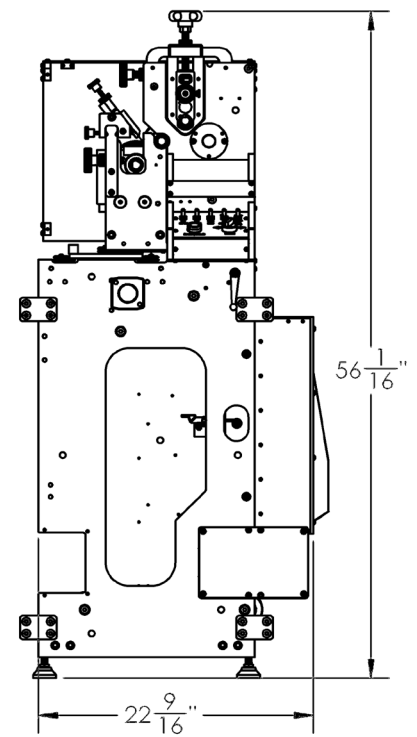
#### 1-1: Introduction

The AZTECH Flexographic Printer, FP, is a modular printing press designed for seamless integration into your die-cutting, lamination or other converting process. The printer is available in 13", 18" and 20" widths. Servo control allows for high-speed operation matching the speed of AZTECH's high-speed converting equipment. Before operating your new FP, fully read and understand the procedures and details listed in this manual. Keeping your machine properly set-up and maintained will assure years of productive and trouble-free service.

#### 1-2: Machine Information and Specifications

##### Features

- Flexo Printing Station for Applying Aqueous, Solvent, and UV Inks/Coatings
- Servo Driven, 1.3KW
- Includes (1) Metering Roller, (1) Ceramic Anilox Roller, (1) Tint Roller, and (1) Impression Roller
- Adjustable Doctor Blade
- Choice of 1/8 CP Spur or Helical Gears
- Forced Hot Air Dryer with Adjustable Temperature Control





# AZTECH CONVERTING SYSTEMS

Flexographic Printer, FP-XX  
USER MANUAL

---

## Section 2: Machine Installation

### 2-1: Preparation

It is important that your Flexographic Printer be situated on solid and level ground. Make sure that the site allows for access to machine from all 4 sides. If the machine is placed on unstable or un-level ground, it may tip over risking damage or serious personal injury.

### 2-2: Un-crating Machine

To avoid damage to your new printer, begin by unfastening the latches on the front panel and removing the panel to expose the machine. Carefully remove all boxes from inside the crate and set aside to avoid damage. Remove all 4 lag bolts which hold the machine to the base.

### 2-3: Removal and Positioning

It is critical that the printer be removed from the crate using a fork lift, making sure that the forks fit directly inside the 2 slots at base of the machine. Lift and remove from crate, and if equipped with adjustable feet, thread all 4 feet into threaded holes at machine's base, and lower into desired position. Machine may be leveled by turning adjustable feet until level.

### 2-4: Electrical and Pneumatic Connections

Electrical and Pneumatic connections are typically integrated into the main press. In instance where the print station is shipped separately, the necessary connections will be labeled for integration into your presses control. The print station will require connectivity to the Yaskawa servo, 3 Phase 220VAC @ 10A and high pressure air, 90PSI in, 1.0 CFM.

### 2-5: Testing Before Operation

Make sure the area around your machine is clear of any objects which may impair the machine. Also inspect and make sure all belts, pulleys, rollers, and spindles are free and clear of any objects which may impede operation, and risk machine damage. Test the switches to assure that they operate correctly.

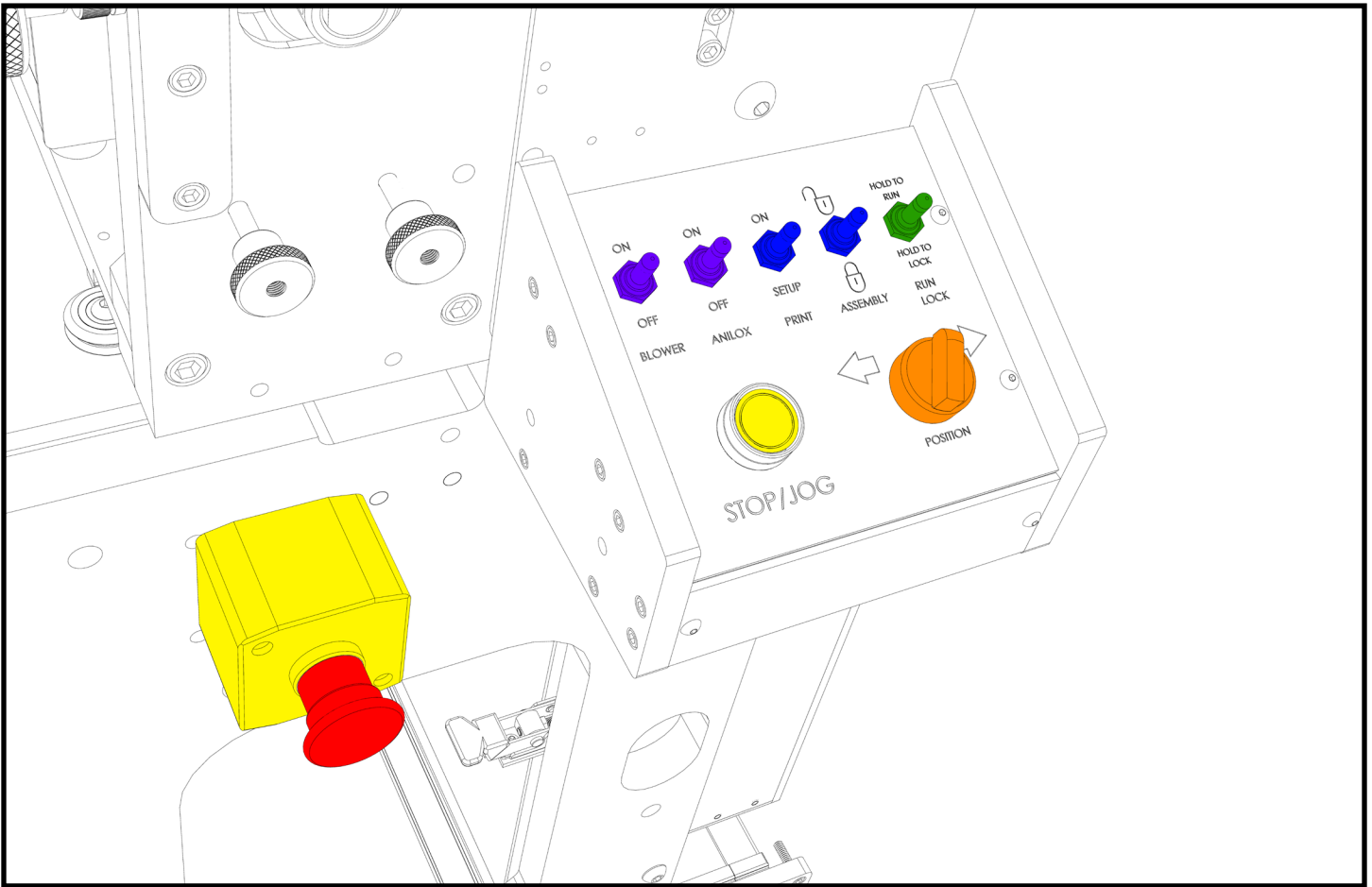
# AZTECH CONVERTING SYSTEMS

Flexographic Printer FP-XX  
USER MANUAL



## Section 3: Setup and Operation

### 3-1: Control Setup



#### ■ RUN SWITCH

Holding the switch in the run position will run the machine. Holding in the lock position locks the press for roll maintenance.

#### ■ STOP/JOG PB

Press and hold to JOG press. Press and release to STOP press.

#### ■ PRINT CONTROL

Assure that the anilox roll is ON during coating to assure ink does not dry on the meter roll. Use the heater switch to engage the dryers.

#### ■ SETUP CONTROLS

Switches to lock and unlock the coating assembly and impression roll.

#### ■ REG POSITION

Adjusts the position of the print in relation to the web.

#### ■ E-STOP

PRESS TO EMERGENCY STOP THE MACHINE.

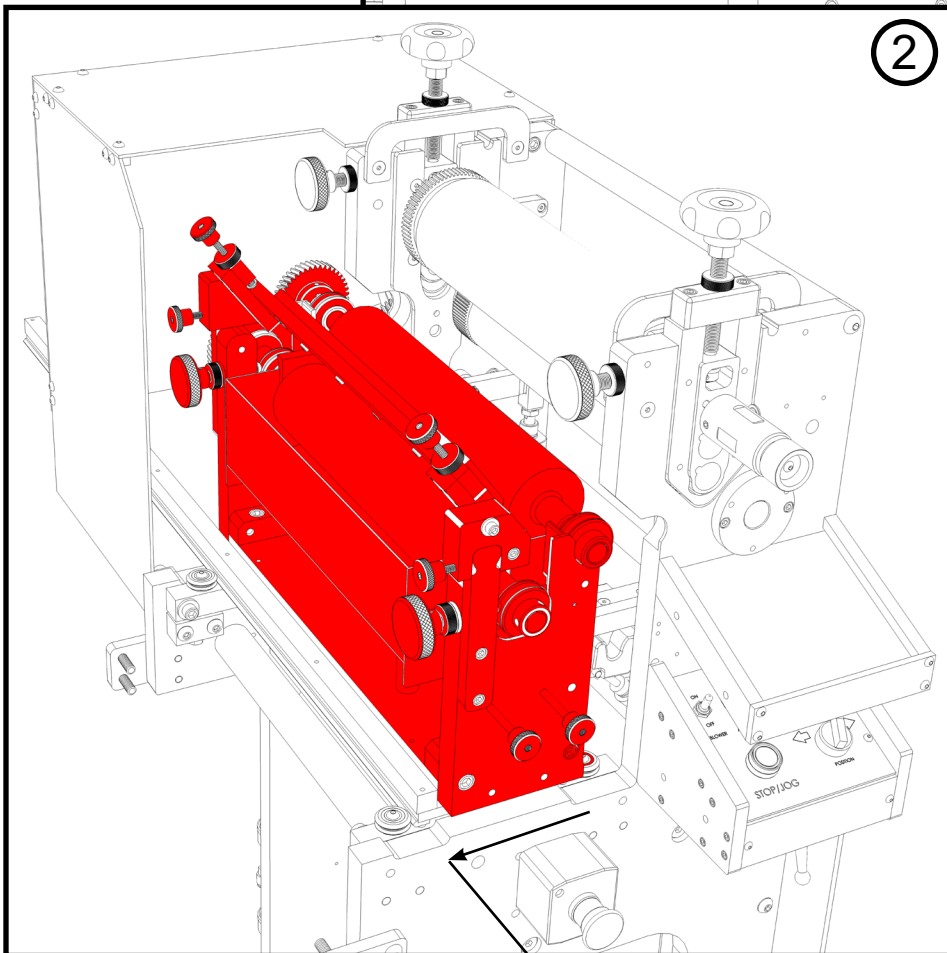
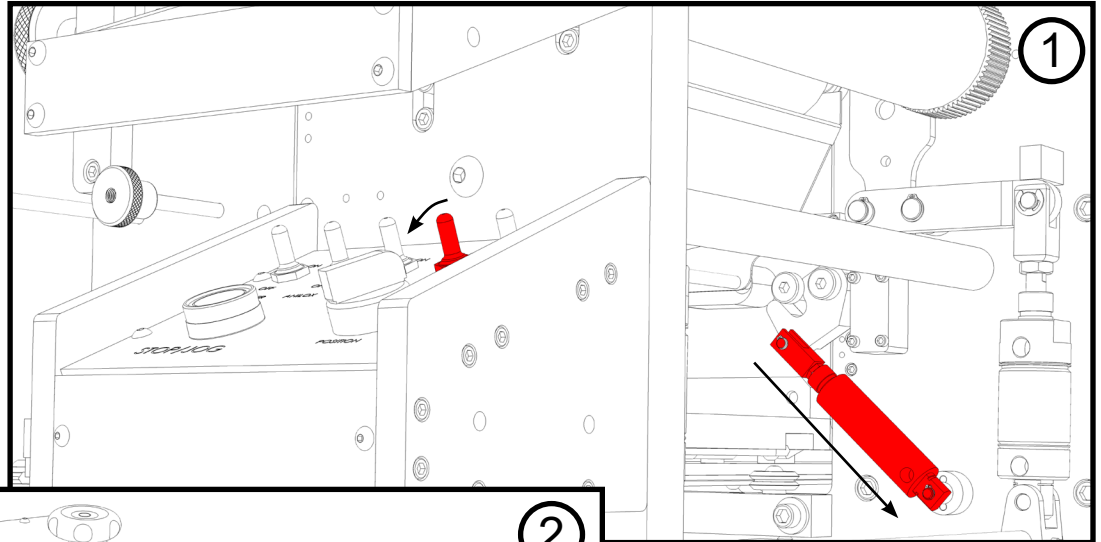


# AZTECH CONVERTING SYSTEMS

Flexographic Printer, FP-XX  
USER MANUAL

## 3-2: Changing the Impression Roll

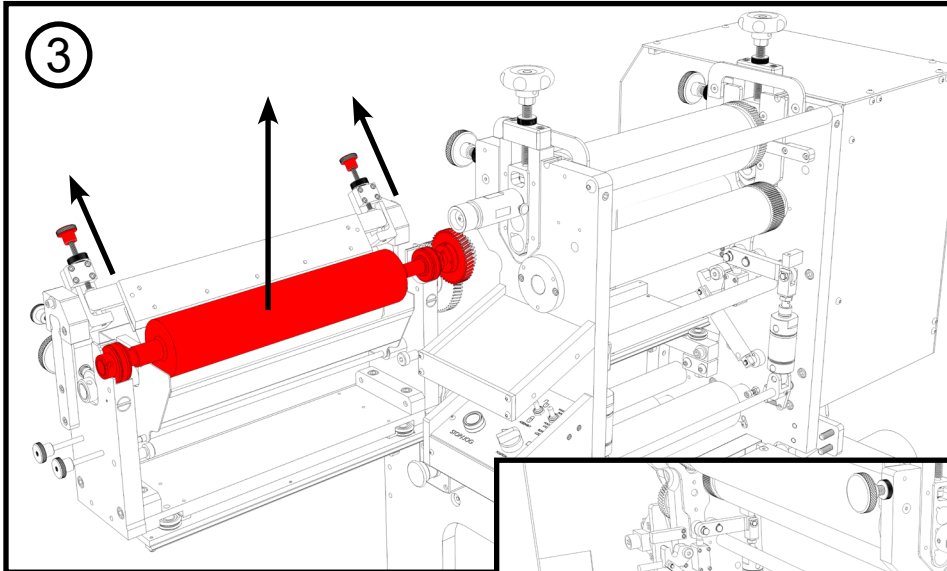
Assure the machine is stopped. Using the ASSEMBLY switch, unlock the print assembly.



Move the print head assembly away from the machine and slide out to access rollers.

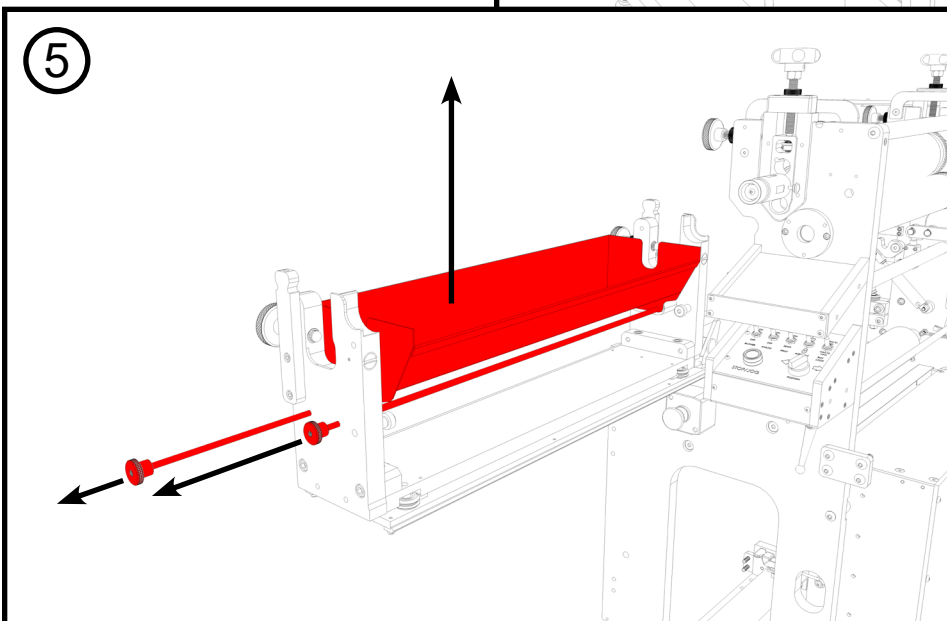
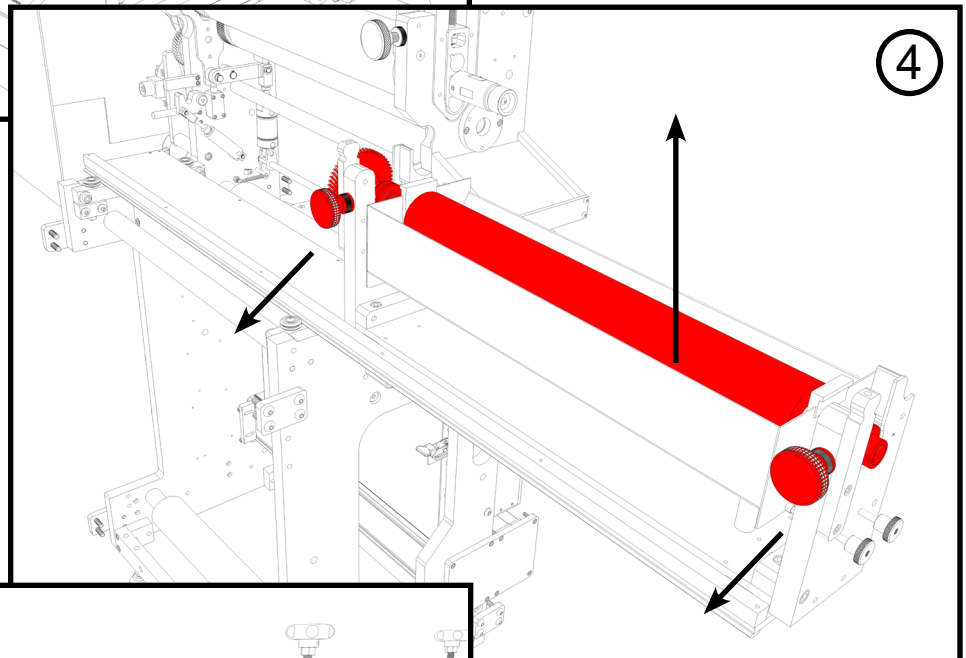
# AZTECH CONVERTING SYSTEMS

Flexographic Printer FP-XX  
USER MANUAL



Unscrew the mount screws for the doctor blade assembly. Remove the doctor blade and lift out the meter roll.

Pull out the retaining pins locking the meter roll in place and lift out the meter roll.



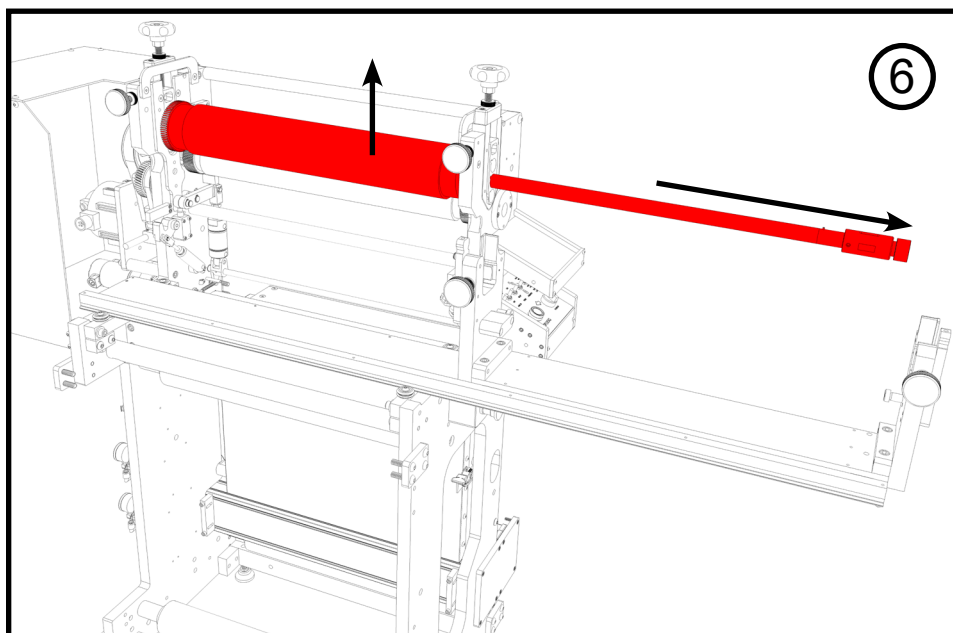
Remove the dowel pins affixing the ink tray. Lift out tray to remove.



# AZTECH CONVERTING SYSTEMS

Flexographic Printer, FP-XX  
USER MANUAL

Depress the button unlocking the retaining pin for the impression roll shaft. Remove the shaft. Lift out the impression roll.



*Re-installation is the opposite of removal.*



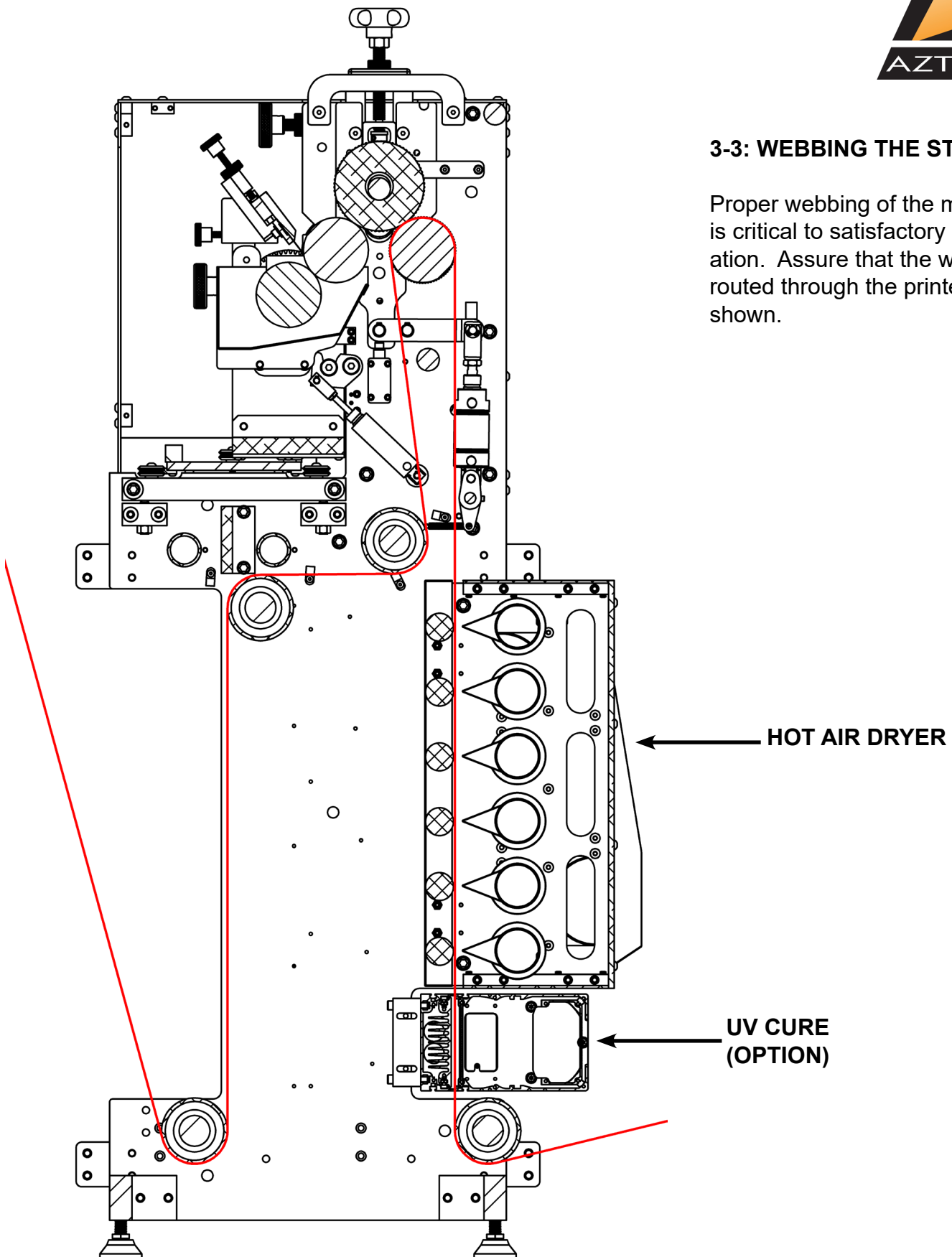
# AZTECH CONVERTING SYSTEMS

Flexographic Printer FP-XX  
USER MANUAL



## 3-3: WEBBING THE STATION

Proper webbing of the machine is critical to satisfactory operation. Assure that the web is routed through the printer as shown.





# AZTECH CONVERTING SYSTEMS

## Flexographic Printer, FP-XX USER MANUAL

### Section 4: Station Details

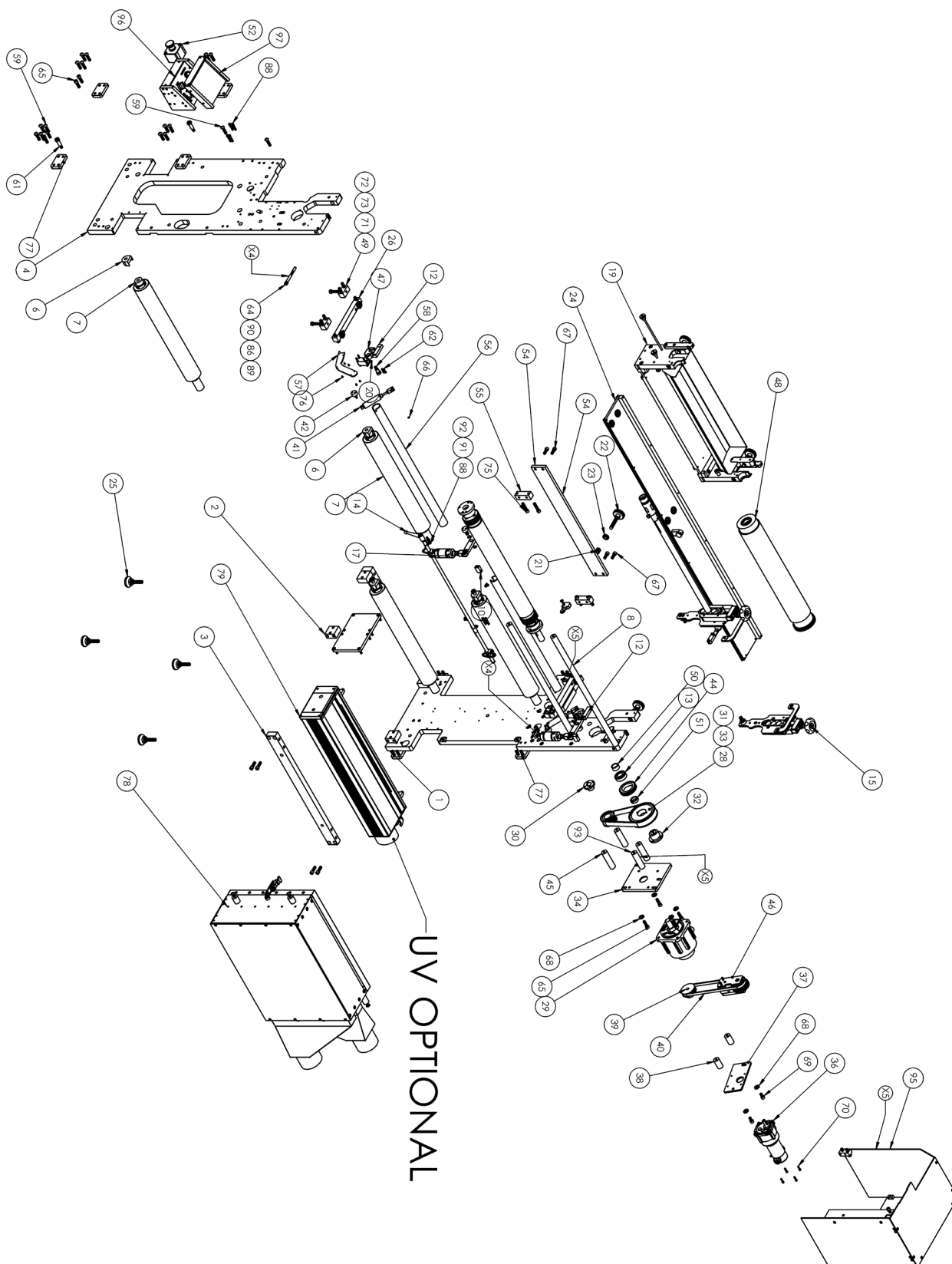
#### 20" Flexographic Printer 20889

#### Bill of Materials

ITEM NO.	PART NUMBER	DESCRIPTION	Default/QTY.
1	20890	PRINT STATION REAR MAIN PLATE	1
2	16344	MODULAR FRAME CROSS BAR BRACE BLOCK	4
3	20084	MODULAR FRAME CROSS BAR 20"	2
4	20891	PRINT STATION FRONT MAIN PLATE	1
5	1_2 X 5.8 X 1 INCH	BUSHING 6391K215	2
6	19661	IDLER ROLLER HOLDER 1-3/8" SHAFT	4
7	20795	IDLER ASSEMBLY PRINT STATION 20"	4
8	20880	STANDOFF 1" DIA X 27" TAPPED 3/8-16 BOTH ENDS	2
9	20893	PRINT STATION IMPRESSION ASSEMBLY 20"	1
10	20897	PRINT STATION PIVOT STOP BLOCK	2
11	20898	PRINT STATION PIVOT PIN LIFT	2
12	20899	PRINT STATION REAR ANOLOX ALINMENT BLOCK	2
13	CSK25PP	CSK25PP One-way (clutch) Bearing	1
14	20911	PRINT CYLINDER LIFT ROD ASSEMBLY	1
15	20902	PRINT CYLINDER ADJUSTMENT ASSEMBLY 20"	1
16	20914	PRINT CYLINDER LIFT LINK	2
17	NCMC150-0050	AIR CYLINDER BORE 1.5" X 1/2" STROKE	2
18	97633A200	Black-Finish Steel External Retaining Ring, for 1/2" Shaft Diameter	6
19	20915	PRINT STATION ANOLOX ASSEMBLY 20"	1
20	20936	PRINT STATION, PLUNGER ASSEMBLY RIDGID LOCK	2
21	Thread Insert 1_2-20x21_32 L	Thread Insert, 1/2-20x21/32 L	2
22	20939	PRINT STATION, PRINT CYLINDER LATERAL ADJUSTMENT ASSEMBLY	2
23	13694	PRINT STATION LOCK KNOBS 1/2-20	2
24	20941	PRINT STATION, ANOLOX SLIDEOUT PLATE ASSEMBLY 20"	1
25	6111K22	LEVELING PAD, 1/2-13	4
26	20946	PRINT STATION, ANOLOX SLIDEOUT VEE BEARING ASSEMBLY	2
27	20948	PRINT STATION, ANOLOX LOCKOUT PIVOT LATCH	1
28	40LH100	40LH100 TIMING PULLEY	1
29	SGMGV-13A3A61	Yaskawa, Servo Motors, SGMGV-13A3A61	1
30	G 22 MM BUSHING	Split Taper Bushing, Cast Iron, 22MM Inch Bore	1
31	20LG100	20LG100 3/8" PITCH, 2.387 PITCH DIA	1
32	H25MM	H BUSHING 25 MM BORE WITH KEYWAY	1
33	3_8 PITCH DRIVE BELT	225L100	1
34	21042	PRINT STATION SERVO MOTOR MOUNT PLATE	1
35	20949	PRINT STATION, LOCKOUT PIN ASSEMBLY	1
36	24VDC Gear Motor	24VDC Electric Gear Motor	1
37	20959	PRINT STATION, ANOLOX MOTOR MOUNT PLATE	1
38	20960	STANDOFF 1" DIA X 1.81 TAPPED ENDS 3/8-16	2
39	20LD50 1_2 BORE	Description	1
40	3_8 PITCH BELT 1_2 WIDE PRINT HEAD	3/8 PITCH BELT 1/2 WIDE 277L050	1
41	NCME088-0100CS	7/8 BORE BY 1" STROKE SPRING RETURN	2
42	20952	PRINT STATION, LOCK IN CYLINDER PIN	2
43	20953	PRINT STATION, LOCK IN PIVOT CLEVIS WELDMENT REAR	1
44	20958	PRINT STATION, IMPRESSION DRIVE GEAR	1
45	20883	STANDOFF 1" DIA X 3.75 TAPPED ENDS 3/8-16	3
46	20961	PRINT STATION, ANOLOX IDLER GEAR ASSEMBLY	1
47	20956	PRINT STATION, LOCK IN PIVOT CLEVIS WELDMENT FRONT	1
48	21046	PRINT CYLINDER ASSEMBLY 20", SPUR GEAR	1
49	20985	SPRT BLOCK 1 X 1 X 2, ONE 3/8-16 TAPPED HOLE, TWO .386 HOLES THRU	4
50	21006	BEARING SPACER 25MM ID	1
51	21007	BEARING SPACER 25MM ID SET LOCK	1
52	Htop_xalk178e	E-Stop Pre-Fab Enclosure Assembly	1
53	21043	PRINT STATION TOP MAIN PLATE SPRT PLATE	2
54	21050	PRINT STATION CROSS BRACE 20"	1
55	21049	1 X 1 X 3 MOUNT BLOCK TWO 3/8-16 TAPPED HOLES, TWO .386 HOLES	2
56	21055	CROSS TUBE 1-1/2" OD 29.125 LONG WITH SLOT	1
57	21056	PRINT STATION WIRE COVER	1
58	SHLDR-HEX_1%2_0-75_SIMP	SHOULDER BOLT 1/2 DIA BY 3/4" 3/8-16 THREADS	2
59	BTNHD_-375-16 UNC_1-5_SIMP	BUTTON HEAD CAP SCREW 3/8-16 X 1-1/2	36
60	DWL PIN GRD_-25000_2.5 stainless	DOWEL PIN 1/4 DIA X 2-1/2" STAINLESS	2
61	SHLDR-HEX_1%2_1-25_SIMP	SHOULDER BOLT 1/2 X 1-1/4"	4
62	SCH_-164-32 UNC_0-75_SIMP	8-32 X 3/4" SOCKET HEAD CAP SCREW	4
63	SCH_-250-20 UNC_1-5_SIMP	SOCKET HEAD CAP SCREW 1/4-20 X 1-1/2"	6
64	DEFAULT	SOCKET SET SCREW 1/2-13 X 1/2"	2
65	SCH_-375-16 UNC_1-25_SIMP	SOCKET HEAD CAP SCREW 3/8-16 X 1-1/4"	20
66	DEFAULT	Black-Finish Steel External Retaining Ring for 1/4" Shaft Diameter	3
67	SCH_-375-16 UNC_1_SIMP	SOCKET HEAD CAP SCREW 3/8-16 X 1"	10
68	WSHR A_-375 HARD	3/8" HARD WASHER	6
69	SCH_-375-16 UNC_0-75_SIMP	SOCKET HEAD CAP SCREW 3/8-16 X 3/4"	2
70	SCH_-190-32 UNF_0-75_SIMP	SOCKET HEAD CAP SCREW 10-32 X 3/4"	4
71	SBHCSREW 0.375-16x2-HX-5	BUTTON HEAD CAP SCREW 3/8-16 X 2"	7
72	HEX NUT_-375-16 UNC_0_SIMP	HEX NUT 3/8-16	4
73	SSCR-HEX-CUP_-375-16 UNC_1-5_SIMP	SOCKET SET SCREWS 3/8-16 X 1-1/2	4
74	FLH-SCH-82_-250-20 UNC_0-5_SIMP	FLAT HEAD CAP SCREW 1/4-20 X 1/2"	4
75	SCH_-375-16 UNC_1-75_SIMP	SOCKET HEAD CAP SCREW 3/8-16 X 1-3/4"	4
76	BTNHD_-138-32 UNC_0-25_SIMP	BUTTON HEAD CAP SCREW 6-32 X 1/4"	5
77	18099	1/2 X 2 X 3 MOUNT BLOCK V DRILL HOLES	8
78	21124	PRINT STATION HEATER BOX ASSEMBLY 20"	1
79	48184 UV 20	Description	1
80	21197	PRINT STATION UV FRONT COVER	1
81	17133	1-1/2 SET COLLAR MODIFIED	2
82	21156	CROSS TUBE 1-1/2" OD 29.125 LONG WITH SLOT AND END SLOT	1
83	1_4 CORD CLAMP WITH BOLT	1/4 cord clamp with 8-32 x 1/2 button head cap screw	8
84	SCH_-250-20 UNC_1_SIMP_1	SOCKET HEAD CAP SCREW 1/4-20 X 1"	8
85	21212	PRINT STATION, SPRING PLATE ASSEMBLY	2
86	DWL PIN GRD_-37500_1	3/8 DIA BY 1" DOWEL PIN	2
87	21311	PRINT STATION, SPRING PLATE ASSEMBLY OPPOSITE	1
88	SCH_-250-20 UNC_1-25_SIMP	SOCKET HEAD CAP SCREW 1/4-20 X 1-1/4"	10
89	9657K156	COMPRESSION SPRING .38 x .048 x 1.5	2
90	DWL PIN GRD_-37500_1_3-4	3/8 DIA BY 1-3/4" DOWEL PIN	2
91	HEX NUT_-250-20 UNC_0_SIMP	1/4-20 NUT	2
92	1.75 X .313 X .035 EXTENSION	EXTENSION SPRING 1.75" L X .313 OD X .035 WIRE LOOPED ENDS	2
93	21401	STANDOFF 1" DIA X 3.625 TAPPED ENDS 3/8-16	1
94	BTNHD_-375-16 UNC_1-75_SIMP	BUTTON HEAD CAP SCREW 3/16 X 1-3/4	1
95	21378	PRINT STATION REAR TOP GUARD ASSEMBLY	1
96	21516	PRINT STATION CONTROL PANEL DISCRETE SWITCH	1
97	21520	PRINT STATION COVER ASSEMBLY	1
98	B0198 INGERSOLL RAND WITH FITTINGS	ARO 3 WAY VALVE 5681424 WITH FITTINGS	1
99	1910-1 PRESSURE SWITCH ASSEMBLY	Series 1900 Compact Low Differential Pressure Switche	1
100	P2115S-024D	ARO 3 WAY VALVE 5681424	1
101	EXP3417	AIR REGULATOR WITH GAUGE AND FITTINGS	2

# AZTECH CONVERTING SYSTEMS

Flexographic Printer FP-XX  
USER MANUAL





# AZTECH CONVERTING SYSTEMS

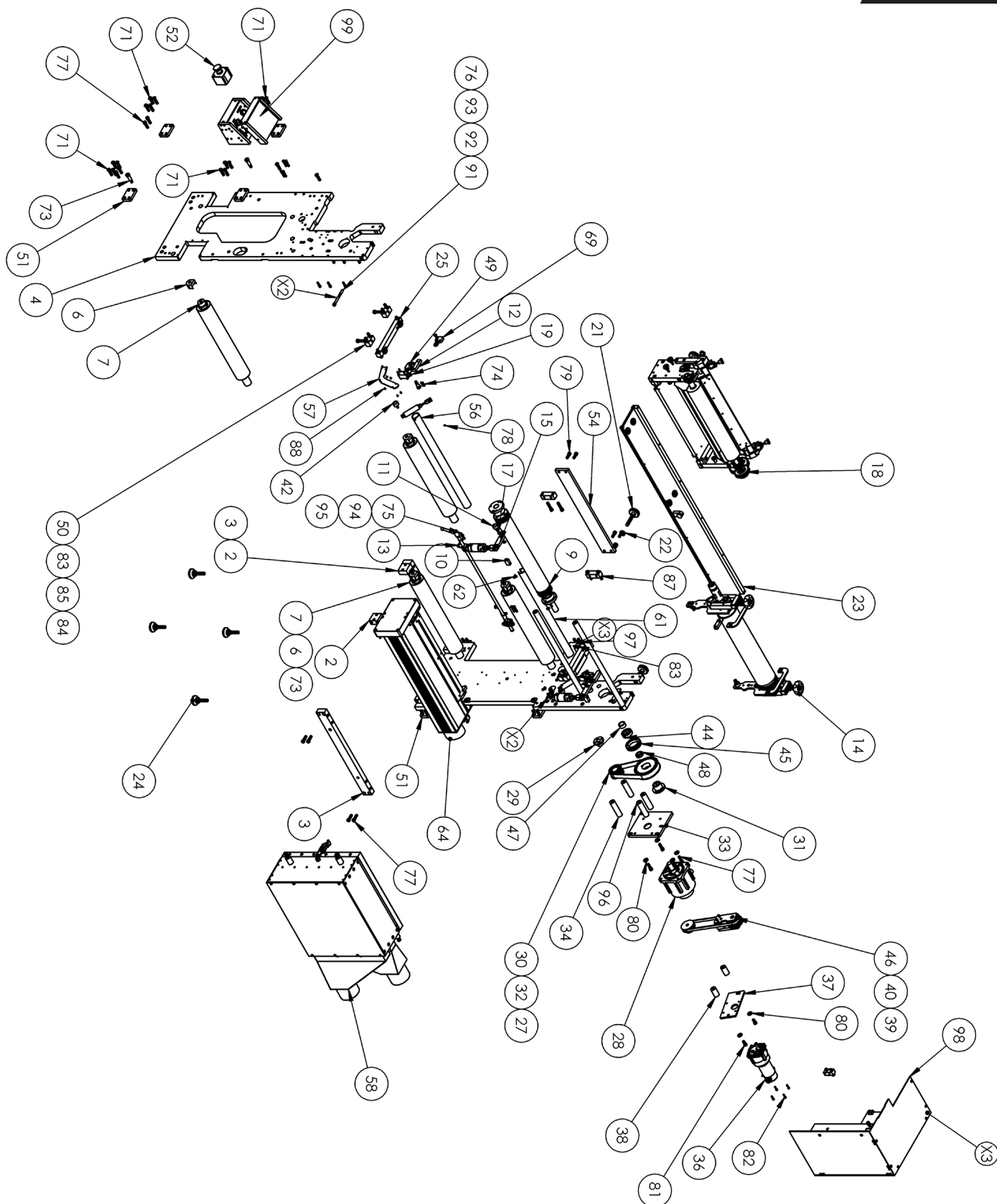
## Flexographic Printer, FP-XX USER MANUAL

### 18" Flexographic Printer 21121 Bill of Materials

ITEM NO.	PART NUMBER	DESCRIPTION	Default/Qty.
1	20890	PRINT STATION REAR MAIN PLATE	1
2	16344	MODULAR FRAME CROSS BAR BRACE BLOCK	4
3	18312	MODULAR FRAME CROSS BAR 18"	2
4	20891	PRINT STATION FRONT MAIN PLATE	1
5	1_2 X 5.8 X 1 INCH	BUSHING 6391K215	2
6	19661	IDLER ROLLER HOLDER 1-3/8" SHAFT	4
7	21228	IDLER ASSEMBLY PRINT STATION 18"	4
8	18525	STANDOFF 1" DIA X 22.75, 3/8-16 TAPPED ENDS	2
9	21230	PRINT STATION IMPRESSION ASSEMBLY 18"	1
10	20897	PRINT STATION PIVOT STOP BLOCK	2
11	20898	PRINT STATION PIVOT PIN LIFT	2
12	20899	PRINT STATION REAR ANOLOX ALIGNMENT BLOCK	2
13	21232	PRINT CYLINDER LIFT ROD ASSEMBLY 18"	1
14	21234	PRINT CYLINDER ADJUSTMENT ASSEMBLY 18"	1
15	20914	PRINT CYLINDER LIFT LINK	2
16	NCMC150-0050	AIR CYLINDER BORE 1.5" X 1/2" STROKE	2
17	97633A200	Black-Finish Steel External Retaining Ring, for 1/2" Shaft Diameter	6
18	21238	PRINT STATION ANOLOX ASSEMBLY 18"	1
19	20936	PRINT STATION, PLUNGER ASSEMBLY RIDGID LOCK	2
20	Thread Insert 1_2-20x21_32 L	Thread Insert, 1/2-20x21/32 L	2
21	20939	PRINT STATION, PRINT CYLINDER LATERAL ADJUSTMENT ASSEMBLY	2
22	13694	PRINT STATION LOCK KNOBS 1/2-20	2
23	21253	PRINT STATION, ANOLOX SLIDEOUT PLATE ASSEMBLY 18"	1
24	6111K22	LEVELING PAD, 1/2-13	4
25	20946	PRINT STATION, ANOLOX SLIDEOUT VEE BEARING ASSEMBLY	2
26	20948	PRINT STATION, ANOLOX LOCKOUT PIVOT LATCH	1
27	40LH100	40LH100 TIMING PULLEY	1
28	SGMGV-13A3A61	Yaskawa, Servo Motors, SGMGV-13A3A61	1
29	G 22 MM BUSHING	Split Taper Bushing, Cast Iron, 22MM Inch Bore	1
30	20LG100	20LG100 3/8" PITCH, 2.387 PITCH DIA	1
31	H25MM	H BUSHING 25 MM BORE WITH KEYWAY	1
32	3_8 PITCH DRIVE BELT	225L100	1
33	21062	PRINT STATION SERVO MOTOR MOUNT PLATE	1
34	20883	STANDOFF 1" DIA X 3.75 TAPPED ENDS 3/8-16	3
35	20949	PRINT STATION, LOCKOUT PIN ASSEMBLY	1
36	24VDC Gear Motor	24VDC Electric Gear Motor	1
37	20959	PRINT STATION, ANOLOX MOTOR MOUNT PLATE	1
38	20960	STANDOFF 1" DIA X 1.81 TAPPED ENDS 3/8-16	2
39	20L050 1_2 BORE	Description	1
40	3_8 PITCH BELT 1_2 WIDE PRINT HEAD	3/8 PITCH BELT 1/2 WIDE 277L050	1
41	NCME088-0100CS	7/8 BORE BY 1" STROKE, SPRING RETURN	2
42	20952	PRINT STATION, LOCK IN CYLINDER PIN	2
43	20953	PRINT STATION, LOCK IN PIVOT CLEVIS WELDMENT REAR	1
44	CSK25PP	CSK25PP One-way (clutch) Bearing	1
45	20958	PRINT STATION, IMPRESSION DRIVE GEAR	1
46	20961	PRINT STATION, ANOLOX IDLER GEAR ASSEMBLY	1
47	21006	BEARING SPACER 25MM ID	1
48	21007	BEARING SPACER 25MM ID SET LOCK	1
49	20956	PRINT STATION, LOCK IN PIVOT CLEVIS WELDMENT FRONT	1
50	20985	SPRT BLOCK 1 X 1 X 2, ONE 3/8-16 TAPPED HOLE, TWO .386 HOLES THRU	4
51	18099	1/2 X 2 X 3 MOUNT BLOCK V DRILL HOLES	8
52	stop_xalk178e	E-Stop Pre-Fab Enclosure Assembly	1
53	21043	PRINT STATION TOP MAIN PLATE SPRT PLATE	2
54	21258	PRINT STATION CROSS BRACE 18"	1
55	21049	1 X 1 X 3 MOUNT BLOCK TWO 3/8-16 TAPPED HOLES, TWO .386 HOLES	2
56	21259	CROSS TUBE 1-1/2" OD 24.875 LONG WITH SLOT	1
57	21056	PRINT STATION WIRE COVER	1
58	21220	PRINT STATION HEATER BOX ASSEMBLY 18"	1
59	21277	PRINT STATION UV FRONT COVER THICK	1
60	17133	1-1/2 SET COLLAR MODIFIED	2
61	21260	CROSS TUBE 1-1/2" OD 24.875 LONG WITH SLOT AND END SLOT	1
62	1_4 CORD CLAMP WITH BOLT	1/4 cord clamp with 8-32 x 1/2 button head cap screw	8
63	21212	PRINT STATION, SPRING PLATE ASSEMBLY	2
64	S14532 Aztec Matrix 460 E2C-50-1 Shielding	UV 18" WEB	1
65	B0198 INGERSOLL RAND	ARO 3 WAY VALVE 5681424	1
66	P211S5-024D	ARO 3 WAY VALVE 5681424	1
67	EXP3417	AIR REGULATOR WITH GUAGE AND FITTINGS	2
68	1910-1 PRESSURE SWITCH ASSEMBLY	Series 1900 Compact Low Differential Pressure Switche	1
69	21311	PRINT STATION, SPRING PLATE ASSEMBLY OPPOSITE	1
70	SHLDR-HEX_1%2_0-75_SIMP	SHOULDER BOLT 1/2 DIA BY 3/4" 3/8-16 THREADS	2
71	BTNHD_-375-16 UNC_1-5_SIMP	BUTTON HEAD CAP SCREW 3/8-16 X 1-1/2	36
72	DWL PIN GRD_25000_2.5 stainless	DOWEL PIN 1/4 DIA X 2-1/2" STAINLESS	2
73	SHLDR-HEX_1%2_1-25_SIMP	SHOULDER BOLT 1/2 X 1-1/4"	4
74	SCH_-164-32 UNC_0-75_SIMP	8-32 X 3/4" SOCKET HEAD CAP SCREW	4
75	SCH_-250-20 UNC_1-25_SIMP	SOCKET HEAD CAP SCREW 1/4-20 X 1-1/4"	14
76	DEFAULT	SOCKET SET SCREW 1/2-13 X 1/2"	2
77	SCH_-375-16 UNC_1-25_SIMP	SOCKET HEAD CAP SCREW 3/8-16 X 1-1/4"	20
78	DEFAULT	Black-Finish Steel External Retaining Ring for 1/4" Shaft Diameter	3
79	SCH_-375-16 UNC_1_SIMP	SOCKET HEAD CAP SCREW 3/8-16 X 1"	10
80	WSHR A_-375 HARD	3/8" HARD WASHER	6
81	SCH_-375-16 UNC_0-75_SIMP	SOCKET HEAD CAP SCREW 3/8-16 X 3/4"	2
82	SCH_-190-32 UNF_0-75_SIMP	SOCKET HEAD CAP SCREW 10-32 X 3/4"	4
83	SBHCSCREW 0.375-16x2-HX-S	BUTTON HEAD CAP SCREW 3/8-16 X 2"	7
84	HEX NUT_-375-16 UNC_0_SIMP	HEX NUT 3/8-16	4
85	SSCR-HEX-CUP_-375-16 UNC_1-5_SIMP	SOCKET SET SCREWS 3/8-16 X 1-1/2	4
86	FLH-SCH-82_-250-20 UNC_0-5_SIMP	FLAT HEAD CAP SCREW 1/4-20 X 1/2"	4
87	SCH_-375-16 UNC_1-75_SIMP	SOCKET HEAD CAP SCREW 3/8-16 X 1-3/4"	4
88	BTNHD_-138-32 UNC_0-25_SIMP	BUTTON HEAD CAP SCREW 6-32 X 1/4"	5
89	SCH_-250-20 UNC_1-5_SIMP	SOCKET HEAD CAP SCREW 1/4-20 X 1-1/2"	2
90	SCH_-250-20 UNC_2_SIMP	SOCKET HEAD CAP SCREW 1/4-20 X 2"	8
91	DWL PIN GRD_-37500_1	3/8 DIA BY 1" DOWEL PIN	2
92	9657K156	COMPRESSION SPRING .38 x .048 x 1.5	2
93	DWL PIN GRD_-37500_1_3-4	3/8 DIA BY 1-3/4" DOWEL PIN	2
94	HEX NUT_-250-20 UNC_0_SIMP	1/4-20 NUT	2
95	1.75 X .313 X .035 EXTENSION	EXTENSION SPRING 1.75" L X .313 OD X .035 WIRE LOOPED ENDS	2
96	21401	STANDOFF 1" DIA X 3.625 TAPPED ENDS 3/8-16	1
97	BTNHD_-375-16 UNC_1-25_SIMP	BUTTON HEAD CAP SCREW 3/8-16 X 1-1/4"	1
98	21378	PRINT STATION REAR TOP GUARD ASSEMBLY	1
99	21516	PRINT STATION CONTROL PANEL DISCRETE SWITCH	1
100	SCH_-250-20 UNC_1_SIMP	SOCKET HEAD CAP SCREW 1/4-20 X 1"	6
101	21520	PRINT STATION COVER ASSEMBLY	1

# AZTECH CONVERTING SYSTEMS

Flexographic Printer FP-XX  
USER MANUAL





# AZTECH CONVERTING SYSTEMS

## Flexographic Printer, FP-XX USER MANUAL

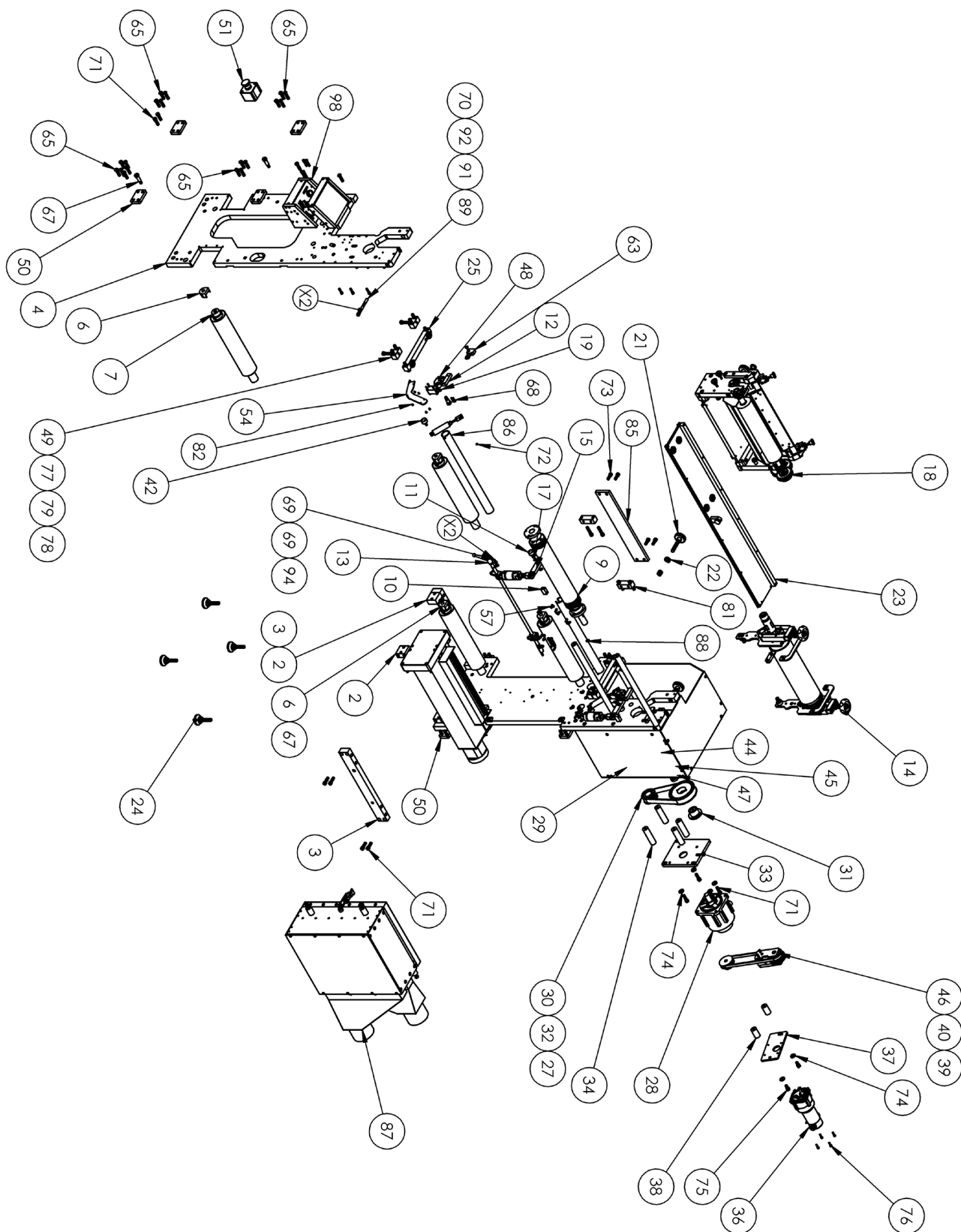
### 13" Flexographic Printer 21120 Bill of Materials

ITEM NO.	PART NUMBER	DESCRIPTION	Default/QT.Y.
1	20890	PRINT STATION REAR MAIN PLATE	1
2	16344	MODULAR FRAME CROSS BAR BRACE BLOCK	4
3	17239	MODULAR FRAME CROSS BAR 13"	2
4	20891	PRINT STATION FRONT MAIN PLATE	1
5	1_2 X 5,8 X 1 INCH	BUSHING 6391K215	2
6	19661	IDLER ROLLER HOLDER 1-3/8" SHAFT	4
7	21317	IDLER ASSEMBLY PRINT STATION, 13"	4
8	10224	SHAFT, SPACER, SMALL, 13" DIE STATION	2
9	21319	PRINT STATION IMPRESSION ASSEMBLY 13"	1
10	20897	PRINT STATION PIVOT STOP BLOCK	2
11	20898	PRINT STATION PIVOT PIN LIFT	2
12	20899	PRINT STATION REAR ANOLOX ALIGNMENT BLOCK	2
13	21321	PRINT CYLINDER LIFT ROD ASSEMBLY 13"	1
14	21353	PRINT CYLINDER ADJUSTMENT ASSEMBLY 13"	1
15	20914	PRINT CYLINDER LIFT LINK	2
16	NCMC150-0050	AIR CYLINDER BORE 1.5" X 1/2" STROKE	2
17	97633A200	Black-Finish Steel External Retaining Ring, for 1/2" Shaft Diameter	6
18	21323	PRINT STATION ANOLOX ASSEMBLY 13"	1
19	20936	PRINT STATION, PLUNGER ASSEMBLY RIDGID LOCK	2
20	Thread Insert 1_2-20x21_32 L	Thread Insert, 1/2-20x21/32 L	2
21	20939	PRINT STATION, PRINT CYLINDER LATERAL ADJUSTMENT ASSEMBLY	2
22	13694	PRINT STATION LOCK KNOBS 1/2-20	2
23	21338	PRINT STATION, ANOLOX SLIDEOUT PLATE ASSEMBLY 13"	1
24	6111K22	LEVELING PAD, 1/2-13	4
25	20946	PRINT STATION, ANOLOX SLIDEOUT VEE BEARING ASSEMBLY	2
26	20948	PRINT STATION, ANOLOX LOCKOUT PIVOT LATCH	1
27	40LH100	40LH100 TIMING PULLEY	1
28	SGMGV-13A3A61	Yaskawa, Servo Motors, SGMGV-13A3A61	1
29	G 22 MM BUSHING	Split Taper Bushing, Cast Iron, 22MM Inch Bore	1
30	20LG100	20LG100 3/8" PITCH, 2.387 PITCH DIA	1
31	H25MM	H BUSHING 25 MM BORE WITH KEYWAY	1
32	3,8 PITCH DRIVE BELT	225L100	1
33	21062	PRINT STATION SERVO MOTOR MOUNT PLATE	1
34	20883	STANDOFF 1" DIA X 3.75 TAPPED ENDS 3/8-16	3
35	20949	PRINT STATION, LOCKOUT PIN ASSEMBLY	1
36	24VDC Gear Motor	24VDC Electric Gear Motor	1
37	20959	PRINT STATION, ANOLOX MOTOR MOUNT PLATE	1
38	20960	STANDOFF 1" DIA X 1.81 TAPPED ENDS 3/8-16	2
39	20L050 1_2 BORE	Description	1
40	3,8 PITCH BELT 1_2 WIDE PRINT HEAD	3/8 PITCH BELT 1/2 WIDE 277L050	1
41	NCME088-0100CS	7/8 BORE BY 1" STROKE, SPRING RETURN	2
42	20952	PRINT STATION, LOCK IN CYLINDER PIN	2
43	20953	PRINT STATION, LOCK IN PIVOT CLEVIS WELDMENT REAR	1
44	CSK25PP	CSK25PP One-way (clutch) Bearing	1
45	20958	PRINT STATION, IMPRESSION DRIVE GEAR	1
46	20961	PRINT STATION, ANOLOX IDLER GEAR ASSEMBLY	1
47	21007	BEARING SPACER 25MM ID SET LOCK	1
48	20956	PRINT STATION, LOCK IN PIVOT CLEVIS WELDMENT FRONT	1
49	20985	SPRT BLOCK 1 X 1 X 2, ONE 3/8-16 TAPPED HOLE, TWO .386 HOLES THRU	4
50	18099	1/2 X 2 X 3 MOUNT BLOCK V DRILL HOLES	8
51	stop_xalk178e	E-Stop Pre-Fab Enclosure Assembly	1
52	21043	PRINT STATION TOP MAIN PLATE SPRT PLATE	2
53	21049	1 X 1 X 3 MOUNT BLOCK TWO 3/8-16 TAPPED HOLES, TWO .386 HOLES	2
54	21056	PRINT STATION WIRE COVER	1
55	21277	PRINT STATION UV FRONT COVER THICK	1
56	17133	1-1/2 SET COLLAR MODIFIED	2
57	1_4 CORD CLAMP WITH BOLT	1/4 cord clamp with 8-32 x 1/2 button head cap screw	8
58	21212	PRINT STATION, SPRING PLATE ASSEMBLY	2
59	B0198 INGERSOLL RAND	ARO 3 WAY VALVE 5681424	1
60	P211SS-024D	ARO 3 WAY VALVE 5681424	1
61	EXP3417	AIR REGULATOR WITH GUAGE AND FITTINGS	2
62	1910-1 PRESSURE SWITCH ASSEMBLY	Series 1900 Compact Low Differential Pressure Switch	1
63	21311	PRINT STATION, SPRING PLATE ASSEMBLY OPPOSITE	1
64	SHLDR-HEX_1%2_0-75_SIMP	SHOULDER BOLT 1/2 DIA BY 3/4" 3/8-16 X 1-1/2	2
65	BTNHD_-375-16 UNC_1-5_SIMP	BUTTON HEAD CAP SCREW 3/8-16 X 1-1/2	36
66	DWL PIN GRD_-25000_2-5 stainless	DOWEL PIN 1/4 DIA X 2-1/2" STAINLESS	2
67	SHLDR-HEX_1%2_1-25_SIMP	SHOULDER BOLT 1/2 X 1-1/4"	4
68	SCH_-164-32 UNC_0-75_SIMP	8-32 X 3/4" SOCKET HEAD CAP SCREW	4
69	SCH_-250-20 UNC_1-25_SIMP	SOCKET HEAD CAP SCREW 1/4-20 X 1-1/4"	14
70	DEFAULT	SOCKET SET SCREW 1/2-13 X 1/2"	2
71	SCH_-375-16 UNC_1-25_SIMP	SOCKET HEAD CAP SCREW 3/8-16 X 1-1/4"	20
72	DEFAULT	Black-Finish Steel External Retaining Ring for 1/4" Shaft Diameter	3
73	SCH_-375-16 UNC_1_SIMP	SOCKET HEAD CAP SCREW 3/8-16 X 1"	10
74	WSHR A_-375 HARD	3/8" HARD WASHER	6
75	SCH_-375-16 UNC_0-75_SIMP	SOCKET HEAD CAP SCREW 3/8-16 X 3/4"	2
76	SCH_-190-32 UNF_0-75_SIMP	SOCKET HEAD CAP SCREW 10-32 X 3/4"	4
77	SBHCSREW 0.375-16x2-HX-S	BUTTON HEAD CAP SCREW 3/8-16 X 2"	7
78	HEX NUT_-375-16 UNC_0_SIMP	HEX NUT 3/8-16	4
79	SSCR-HEX-CUP_-375-16 UNC_1-5_SIMP	SOCKET SET SCREW 3/8-16 X 1-1/2	4
80	FLH-SCH-82_-250-20 UNC_0-5_SIMP	FLAT HEAD CAP SCREW 1/4-20 X 1/2"	4
81	SCH_-375-16 UNC_1-75_SIMP	SOCKET HEAD CAP SCREW 3/8-16 X 1-3/4"	4
82	BTNHD_-138-32 UNC_0-25_SIMP	BUTTON HEAD CAP SCREW 6-32 X 1/4"	5
83	SCH_-250-20 UNC_1-5_SIMP	SOCKET HEAD CAP SCREW 1/4-20 X 1-1/2"	2
84	SCH_-250-20 UNC_2_SIMP	SOCKET HEAD CAP SCREW 1/4-20 X 2"	8
85	21341	PRINT STATION CROSS BRACE 13"	1
86	21342	CROSS TUBE 1-1/2" OD 19.875 LONG WITH SLOT	1
87	21344	PRINT STATION HEATER BOX ASSEMBLY 13"	1
88	21343	CROSS TUBE 1-1/2" OD 19.875 LONG WITH SLOT AND END SLOT	1
89	DWL PIN GRD_-37500_1	3/8 DIA BY 1" DOWEL PIN	2
90	GEW UV ASSEMBLY 13 INCH	UV UNIT MODEL VCP-50 FOR 13" WEB	1
91	9657K156	COMPRESSION SPRING .38 x .048 x 1.5	2
92	DWL PIN GRD_-37500_1_3-4	3/8 DIA BY 1-3/4" DOWEL PIN	2
93	HEX NUT_-250-20 UNC_0_SIMP	1/4-20 NUT	2
94	1.75 X .313 X .035 EXTENTION	EXTENSION SPRING 1.75" L X .313 OD X .035 WIRE LOOPED ENDS	2
95	BTNHD_-375-16 UNC_1-25_SIMP	BUTTON HEAD CAP SCREW 3/8-16 X 1-1/4"	1
96	21378	PRINT STATION REAR TOP GUARD ASSEMBLY	1
97	21401	STANDOFF 1" DIA X 3.625 TAPPED ENDS 3/8-16	1
98	21516	PRINT STATION CONTROL PANEL, DISCRETE SWITCH	1
99	21520	PRINT STATION COVER ASSEMBLY	1
100	SCH_-250-20 UNC_1_SIMP	SOCKET HEAD CAP SCREW 1/4-20 X 1"	6



# AZTECH CONVERTING SYSTEMS

Flexographic Printer FP-XX  
USER MANUAL





# AZTECH CONVERTING SYSTEMS

Flexographic Printer, FP-XX  
USER MANUAL

---

## Section 5: Warranties and Service

### 5-1: Warranties & Provisions

**WARRANTIES:** All equipment manufactured and sold by AZTECH Converting Systems (Seller) is warranted to be free of defective materials and workmanship under normal use and service for a period of one (1) year from the date of delivery to Buyer's premises. All commercial components not manufactured by Seller carry the original manufacturer's warranty. At Seller's discretion, Seller may provide on-site warranty service for a period of ninety (90) days from the aforementioned date.

**REMEDIES:** If within the Warranty Period any such equipment is proven, to Seller's satisfaction, to be defective in either material or workmanship, Seller, at its sole discretion, shall (a) repair or replace defective parts on the Equipment at Seller's cost, or (b) grant a reasonable allowance on account of such a breach. If within the Warranty Period the Seller receives notice from Buyer of defects in parts or material, Seller will ship (ground, prepaid) replacement parts and invoice Buyer for the full cost of the replacement parts. Buyer will receive a Return Material Authorization (RMA) from seller, and return defective parts or materials to Seller, who at its sole discretion shall determine whether defective parts or materials are or are not subject to exclusion from this warranty as provided herein. Any defective parts or material not excluded from the Warranty Period will then be fully credited to Buyer. Defective parts must be shipped back to the Seller within 30 days to receive full credit.

### EXCLUSIONS

#### THE FOLLOWING ITEMS ARE EXCLUDED FROM THIS WARRANTY:

- Defects or damage caused by careless or improper use.
- Parts that need periodic replacement from wear during normal operation.
- Routine maintenance and adjustment.
- Failure or damage caused by improper installation or inadequate maintenance by Buyer.
- Failure or damage caused by equipment modifications by Buyer.
- Equipment damage resulting from an accident, or abnormal conditions of operation.

### DISCLAIMER OR WARRANTY

NO OTHER WARRANTY IS EXPRESSED OR IMPLIED INCLUDING WARRANTIES OF MERCHANTABILITY AND FITNESS FOR ANY PARTICULAR PURPOSE. SELLER IS NOT LIABLE FOR INCIDENTAL OR CONSEQUENTIAL DAMAGE SUCH AS, BUT NOT LIMITED TO LOSS IN PROFITS, LOSS OF USE OF EQUIPMENT, OR INCREASED IN OPERATING COSTS OR EXPENSES.

### 5-2: Technical Service

In the event that your print station is not functioning properly or if you have any technical questions, an AZTECH Technical Service representative is available to assist you. Contact information is as follows:

**Phone:** 1-480-951-8351  
1-800-829-8351  
**Fax:** 1-480-998-5409  
**E-Mail:** [techservice@aztechconverting.com](mailto:techservice@aztechconverting.com)