



**AZTECH CONVERTING SYSTEMS**

212 W Lodge Drive

TEMPE, AZ 85283

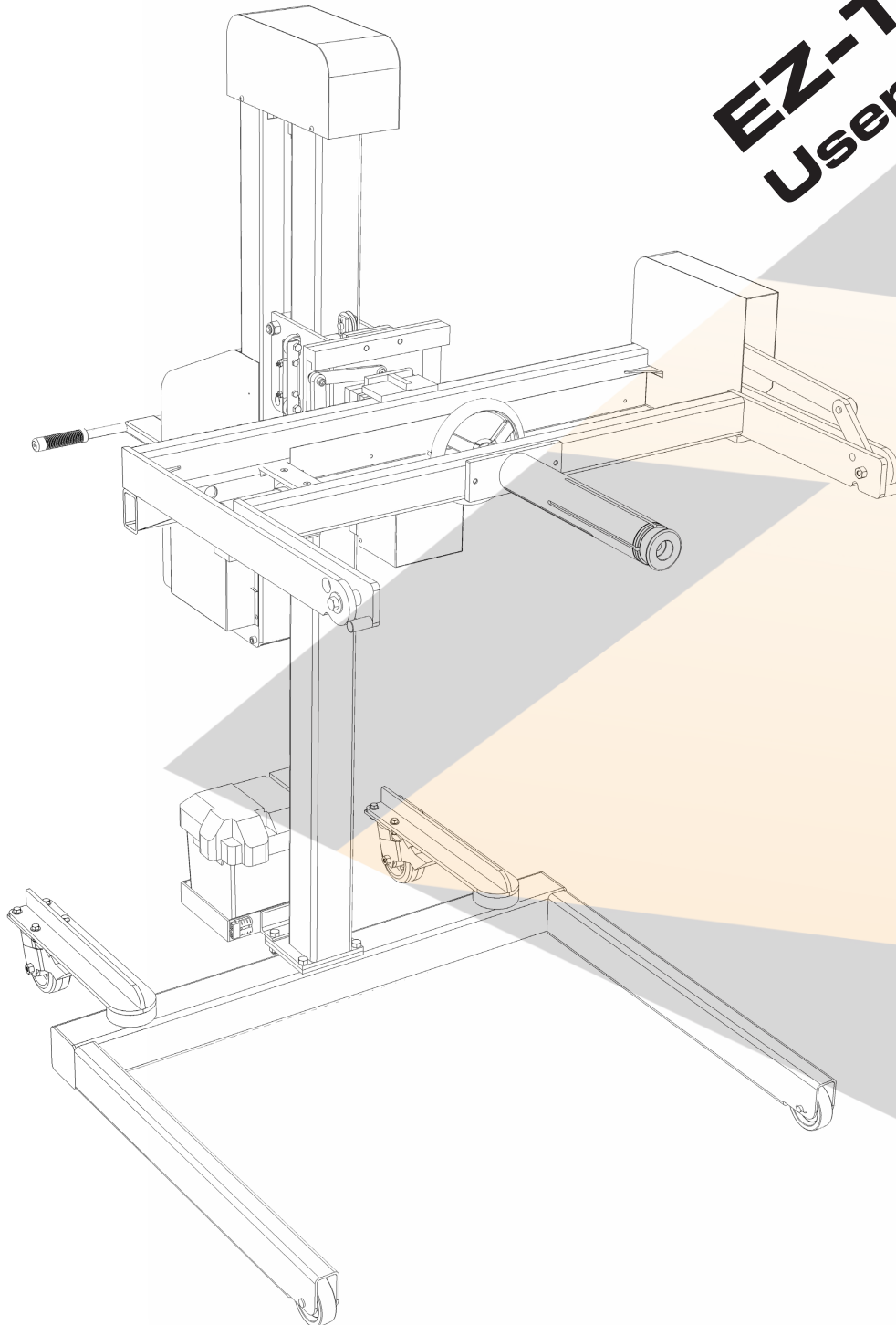
PHONE (480) 951-8351

FAX (480) 998-5409

[www.aztechconverting.com](http://www.aztechconverting.com)

# **EZ-TILT 600**

## **User Manual**





# **AZTECH CONVERTING SYSTEMS**

## **EZ-TILT 600 USER MANUAL**

---

### **TABLE OF CONTENTS**

<b>SECTION 1: GENERAL INFORMATION</b>	<b>1-2</b>
<b>SECTION 2: MACHINE INSTALLATION</b>	<b>3</b>
<b>SECTION 3: MACHINE OPERATION</b>	<b>4-7</b>
<b>SECTION 4: MACHINE DETAILS</b>	<b>8-21</b>
<b>SECTION 5: WARRANTY</b>	<b>22</b>



## Section 1: General Information

### 1-1: Introduction

The AzTech E-Z Electric Tilt Model E-Z 600 Mobile Roll Tilting Cart is designed and manufactured to help reduce workplace injuries and decrease roll material damage by turning rolls of material 90 degrees back and forth from stacked upright positions. The E-Z Electric Tilt with its all-steel construction and simplistic design will prove to be an invaluable product for your work environment and is sure to provide your company many years of safe, dependable service.

### 1-2: Care and Maintenance

The E-Z ElectricTilt is relatively maintenance free, with the only scheduled maintenance being charging the battery as need be. Periodically inspect the hinge bolts at the pivot points to assure they have not loosened over time, tighten if need be, but do not over-tighten as this will cause difficulty in turning. Over time, the lift cable may wear, and need replacement.

### 1-3: Safety

The E-Z Electric Tilt is equipped with a safety brake which will automatically engage in the event of the lift cable breakage. Never operate the E-Z Electric Tilt without the safety cover, stay clear of the load which may become unstable, and never transport people or exceed the 600lbs (272 kg) load limitation.

The E-Z Electric Tilt is also equipped with a toe-brake which locks the back wheel(s) keeping it from rolling if it is on a non-level surface.



# AZTECH CONVERTING SYSTEMS

## EZ-TILT 600 USER MANUAL

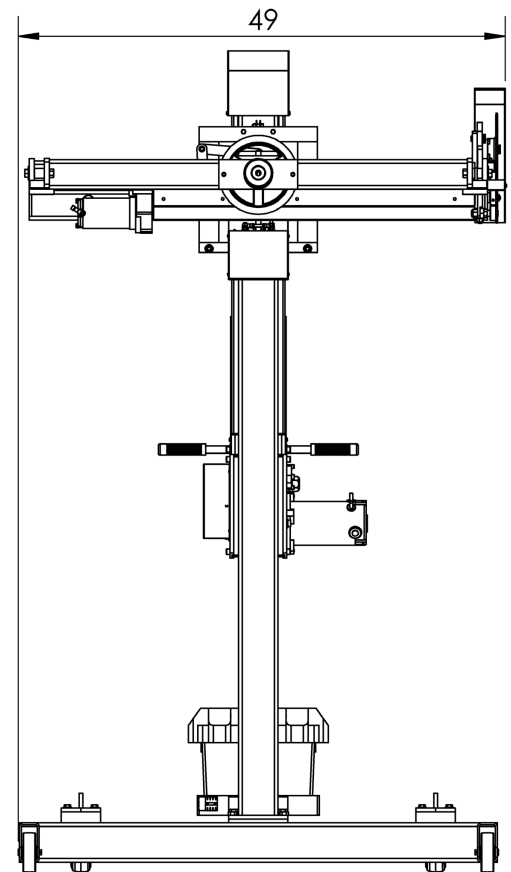
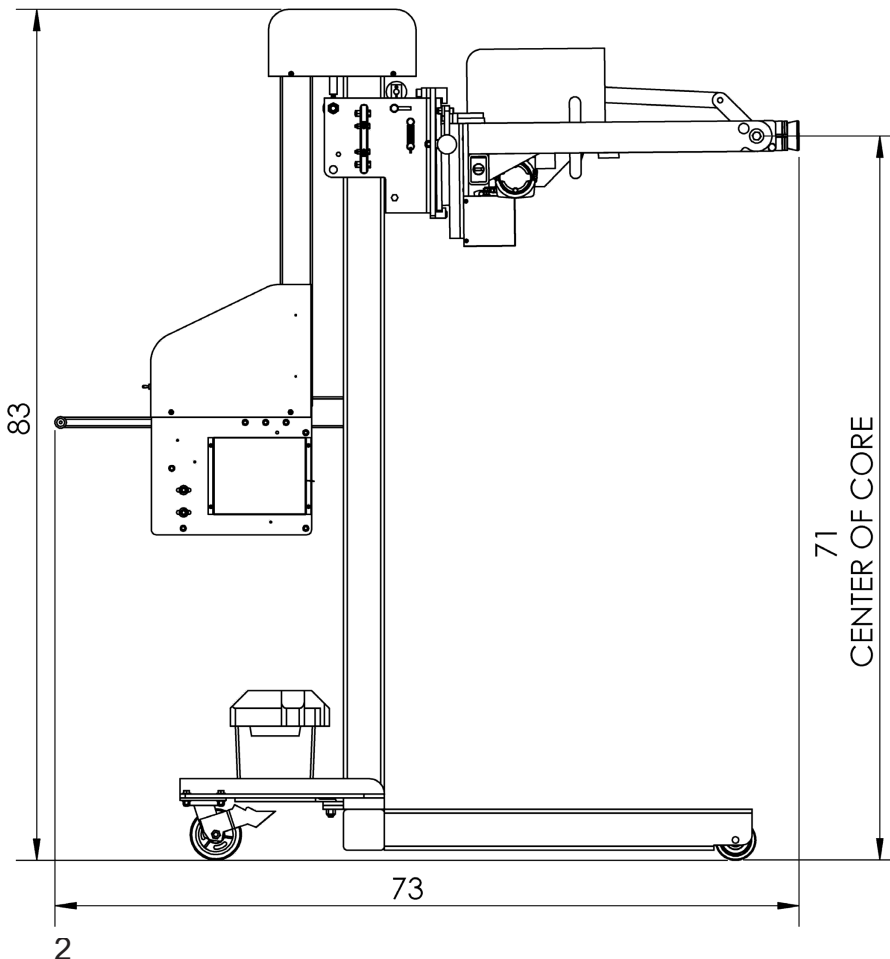
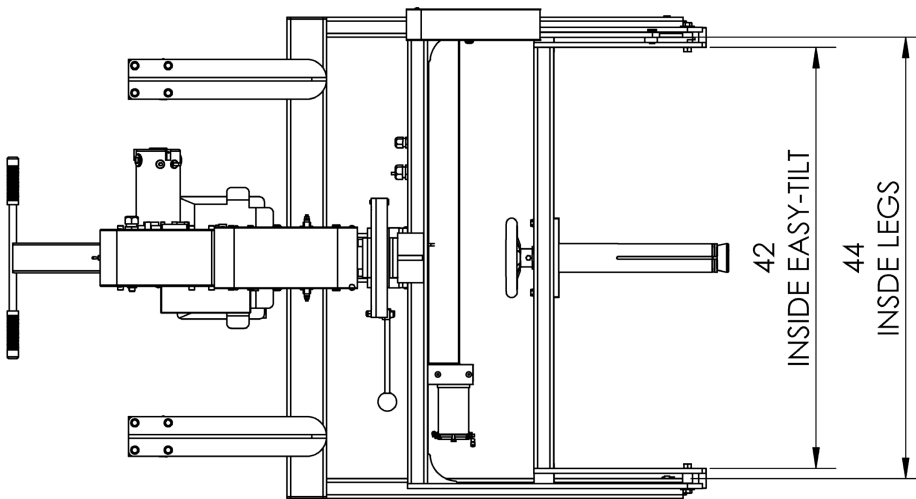
### 1-4: Machine Information and Specifications

Maximum Tilt Weight : 600 lbs (272 kg)

Maximum Lift Height : 71" (180 cm)

Dimensions: Width : 48" (122 cm)

Depth : 64" (162 cm)



(ELECTRIC MODEL SHOWN)

Rev 1.0



## **Section 2: Machine Installation**

### **2-1: Preparation**

After carefully removing your E-Z Electric Tilt from the crate, check to assure that all the bolts are tight, and that no components have come loose during shipment. Carefully inspect all 4 wheels making sure they roll freely and are free of damage. If any visible damage has occurred in shipment, contact AzTech Converting Systems immediately.

### **2-2: Battery Connections (Electric Only)**

The E-Z Electric Tilt motorized lift utilizes a 12 Volt deep-cycle battery (not provided) which may be purchased at virtually any automotive or department store. To connect the battery, simply connect red cable to the positive (+) terminal, and the other cable to the negative (-) terminal. The E-Z Electric Tilt comes with an auxiliary battery charger and will need to be charged periodically dependant on use. Generally the higher the cold cranking amps (CCA) the battery is rated at, the less frequently it would need to be charged.

### **2-3: Saftey Brake Inspection**

As noted your EZ-TILT is equipped with a safety brake which will prevent a load from falling in the event of a cable break. To assure it is working properly, check to see that the 2 springs that activate the safety brake have tension and are attached at both ends.

### **2-4: Cable Inspection**

Before lifting a load for the first time, remove the protective winch cover and visually inspect to assure that the cable is seated properly in the grooves of the pulleys.

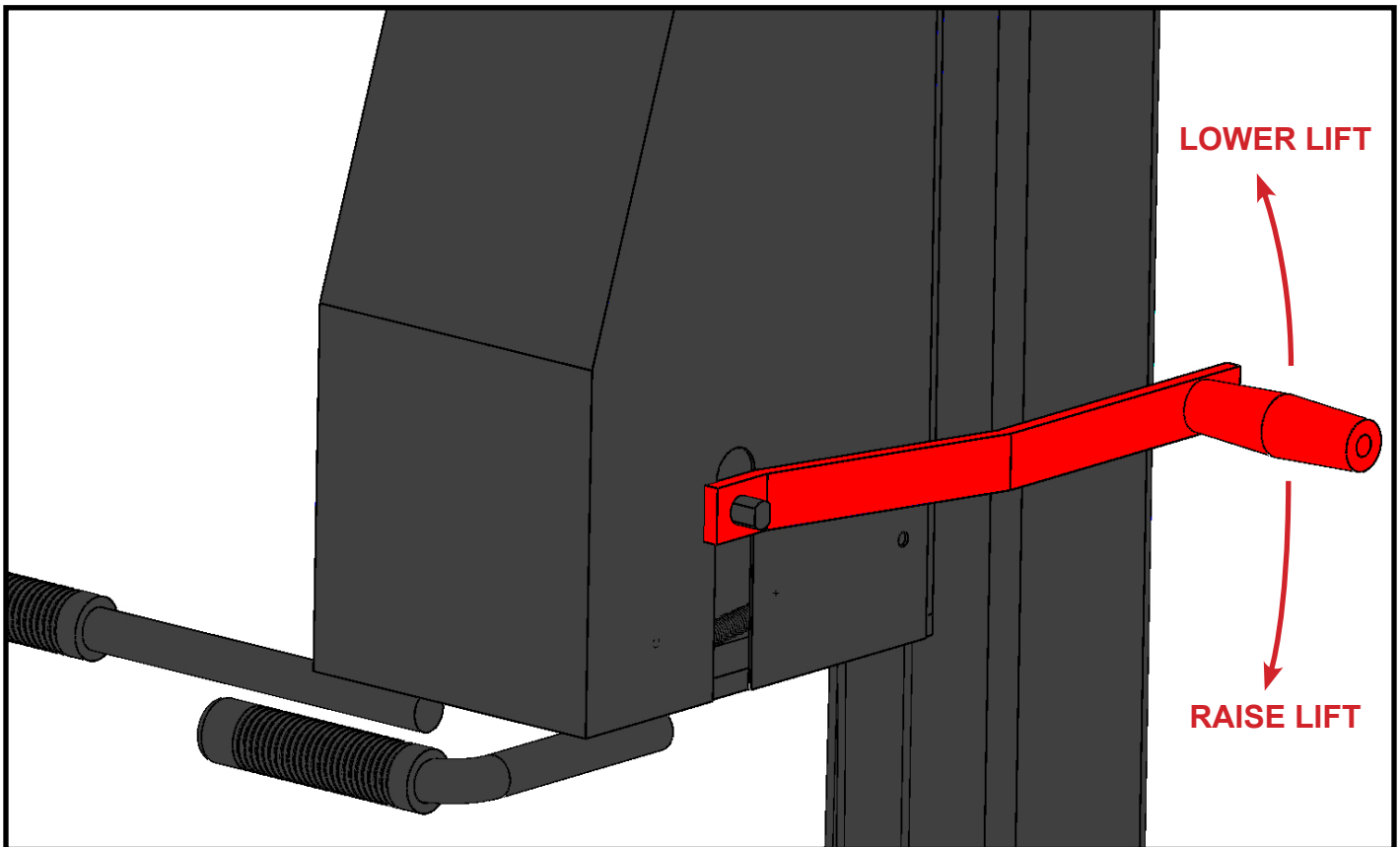


# AZTECH CONVERTING SYSTEMS

## EZ-TILT 600 USER MANUAL

### Section 3: Machine Operation

#### 3-1: Lift Operation, Manual

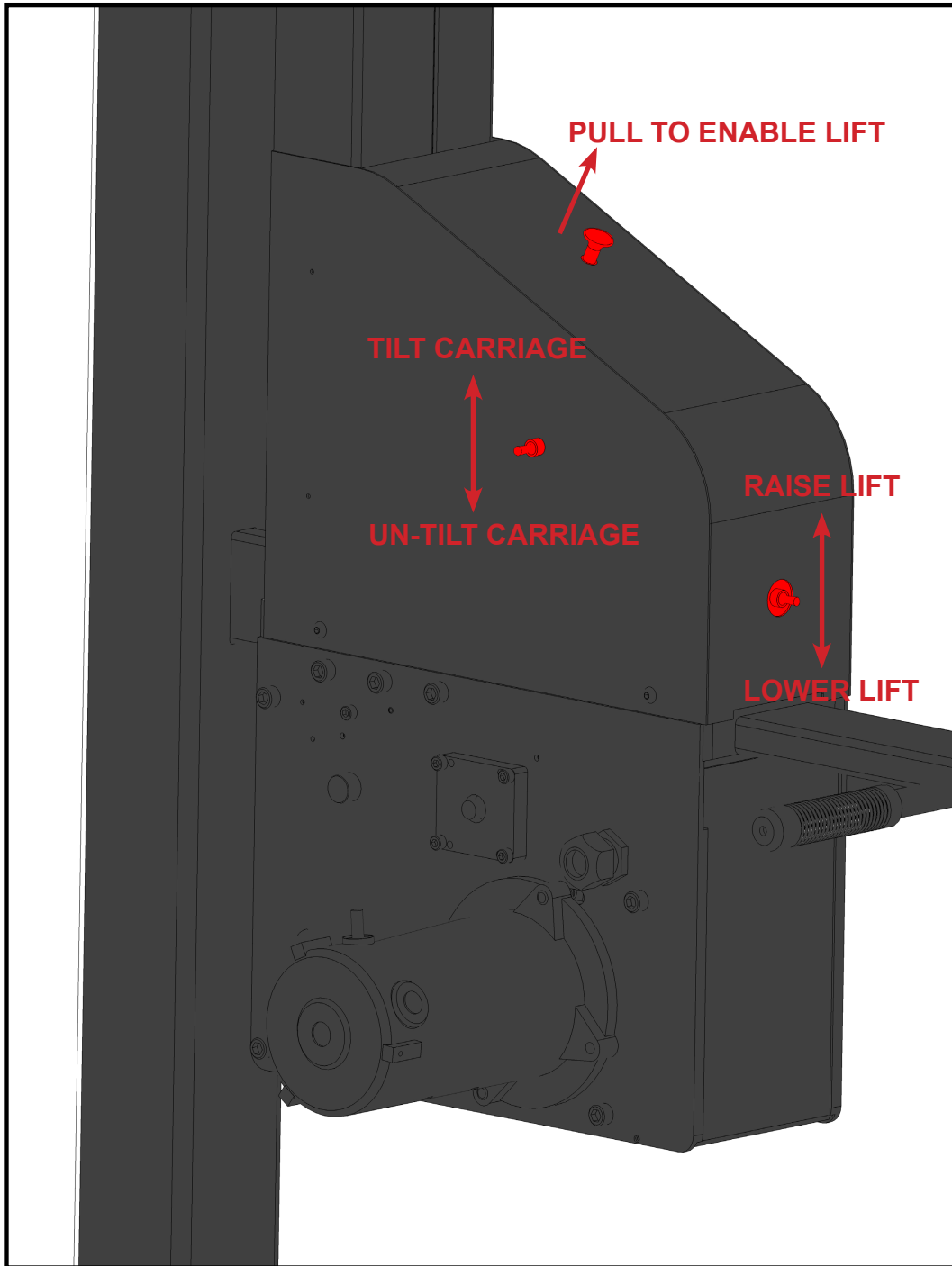


To operate the lift, turn crank handle clockwise to raise and counter-clockwise to lower. When raising the lift, make certain that the winch makes a clicking sound.

This clicking denotes that the winch is performing properly.



### 3-2: Lift Operation, Electric



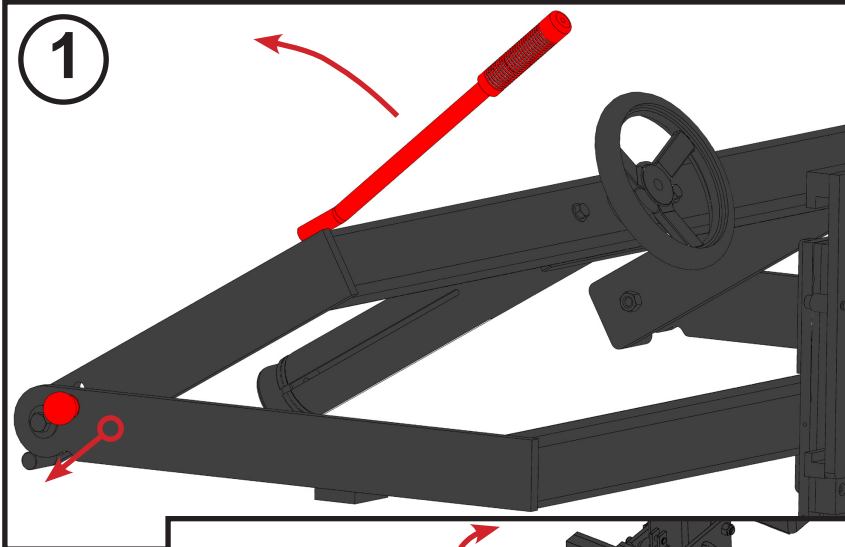
When equipped with the electric option, lift controls are switch operated.



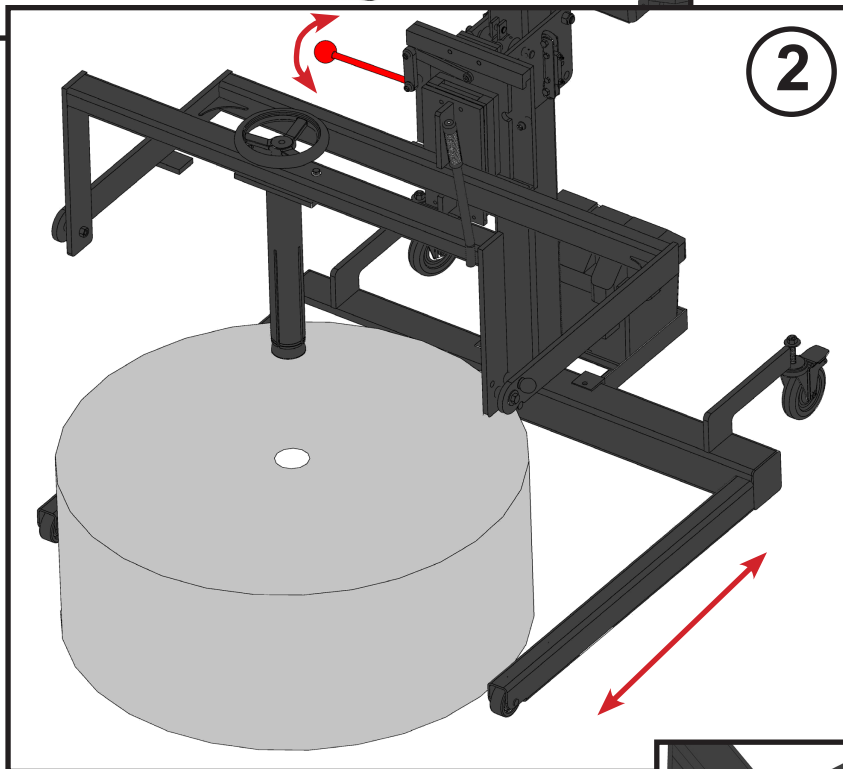
# AZTECH CONVERTING SYSTEMS

## EZ-TILT 600 USER MANUAL

### 3-2: Tilt Operation

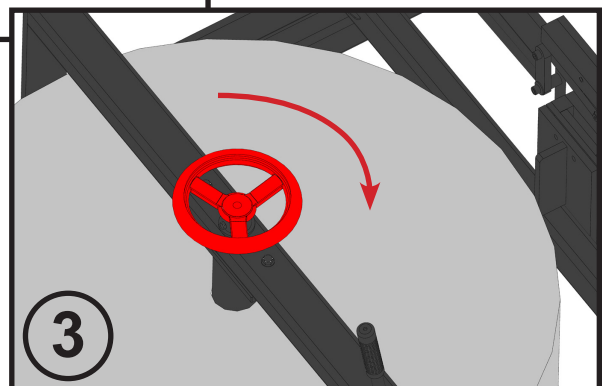


**1:** Pull the pin retaining the core holder. Rotate to vertical position. Release pin to lock.



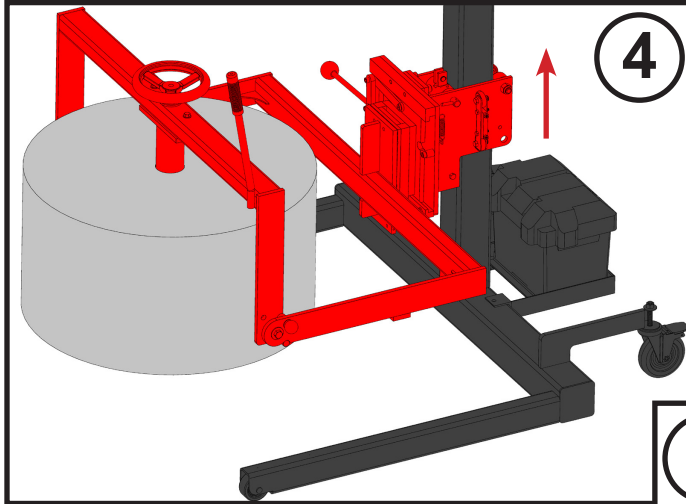
**2:** Move the cart into position over the roll. Use the side-lay handle to aid in positioning the roll.

**3:** Tighten the core holder to lock the roll.



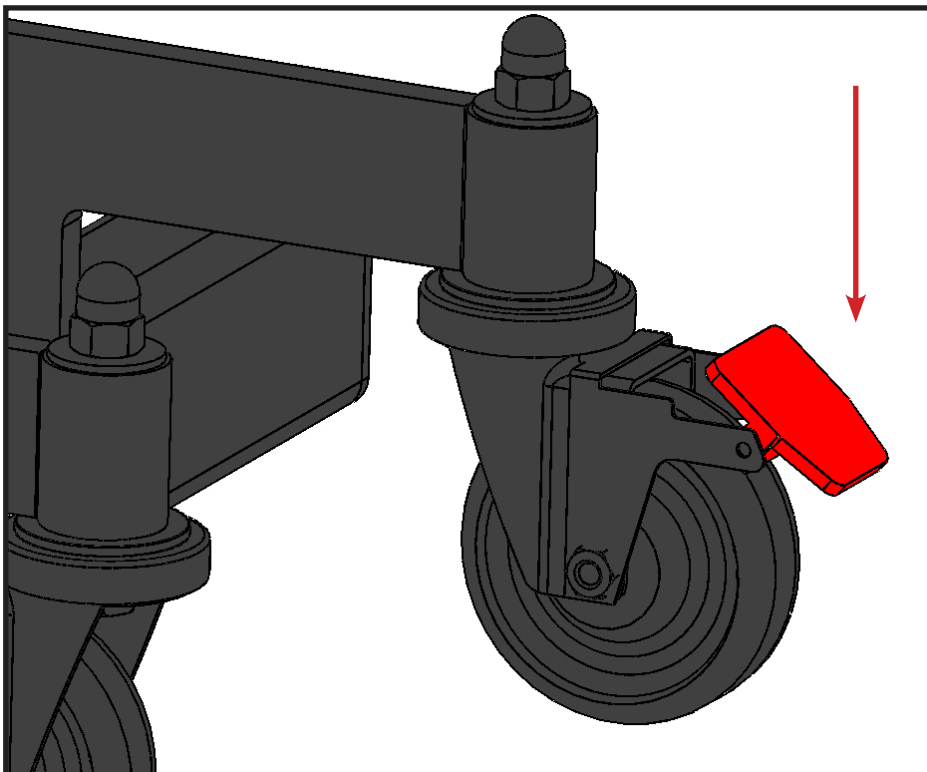
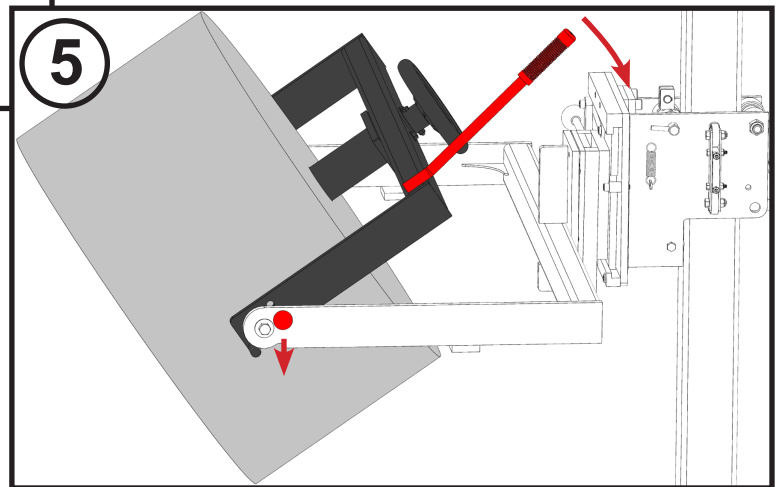
# AZTECH CONVERTING SYSTEMS

## EZ-TILT 600 USER MANUAL



**4:** Raise the roll carriage to pick up the roll.

**5:** Pull the pin locking the core holder. Rotate holder to horizontal position.



### Wheel Brake Operation

The EZ-Tilt is equipped with back wheel safety brakes which are to be used to hold the cart in place once in desired position and as a safety feature to keep the cart from rolling while in the stationary position. To operate, simply press handle down and snap into place to activate brake, and lift to de-activate brake.

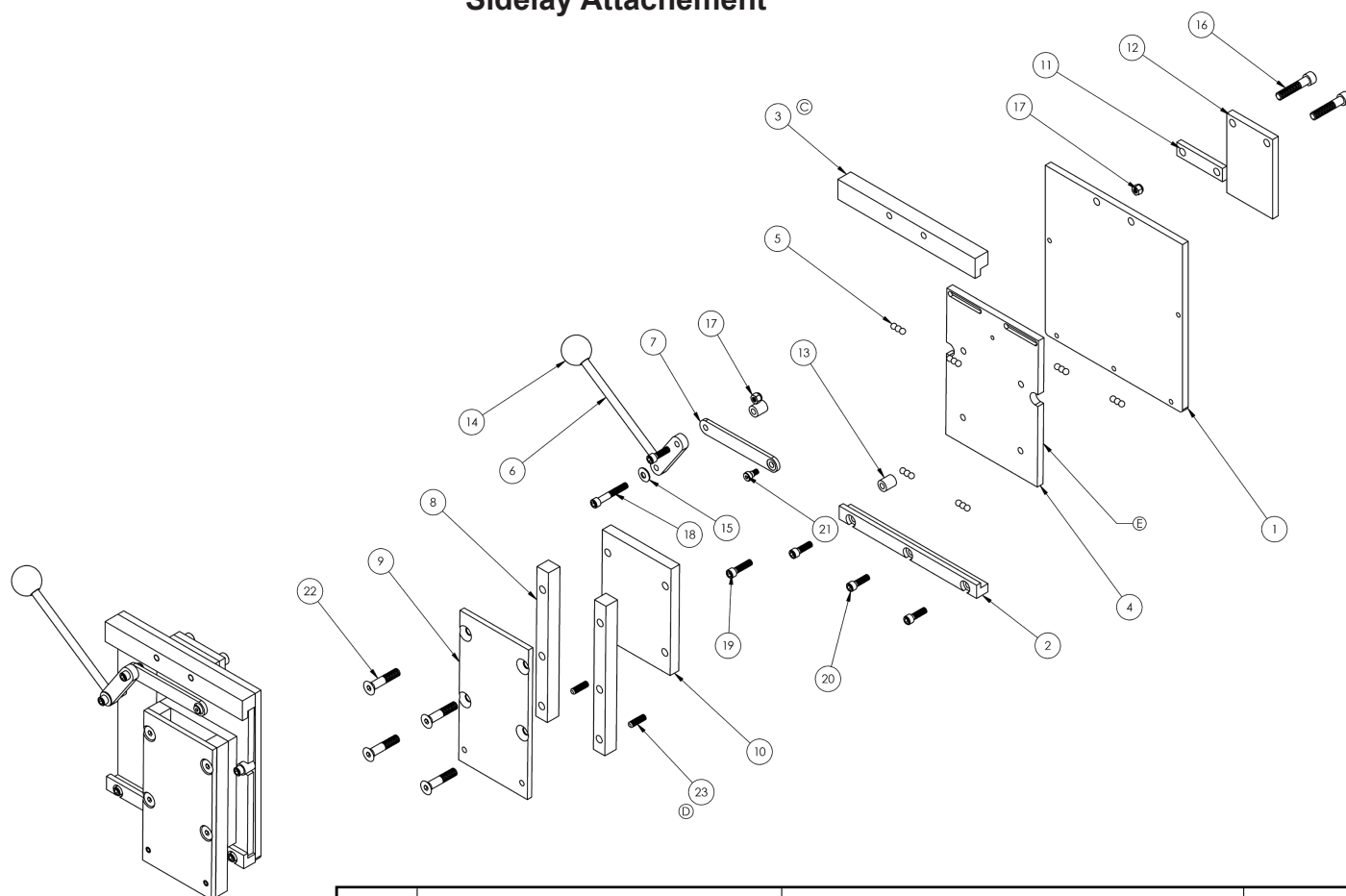


# AZTECH CONVERTING SYSTEMS

## EZ-TILT 600 USER MANUAL

### Section 4: Machine Details

#### Sidelay Attachement



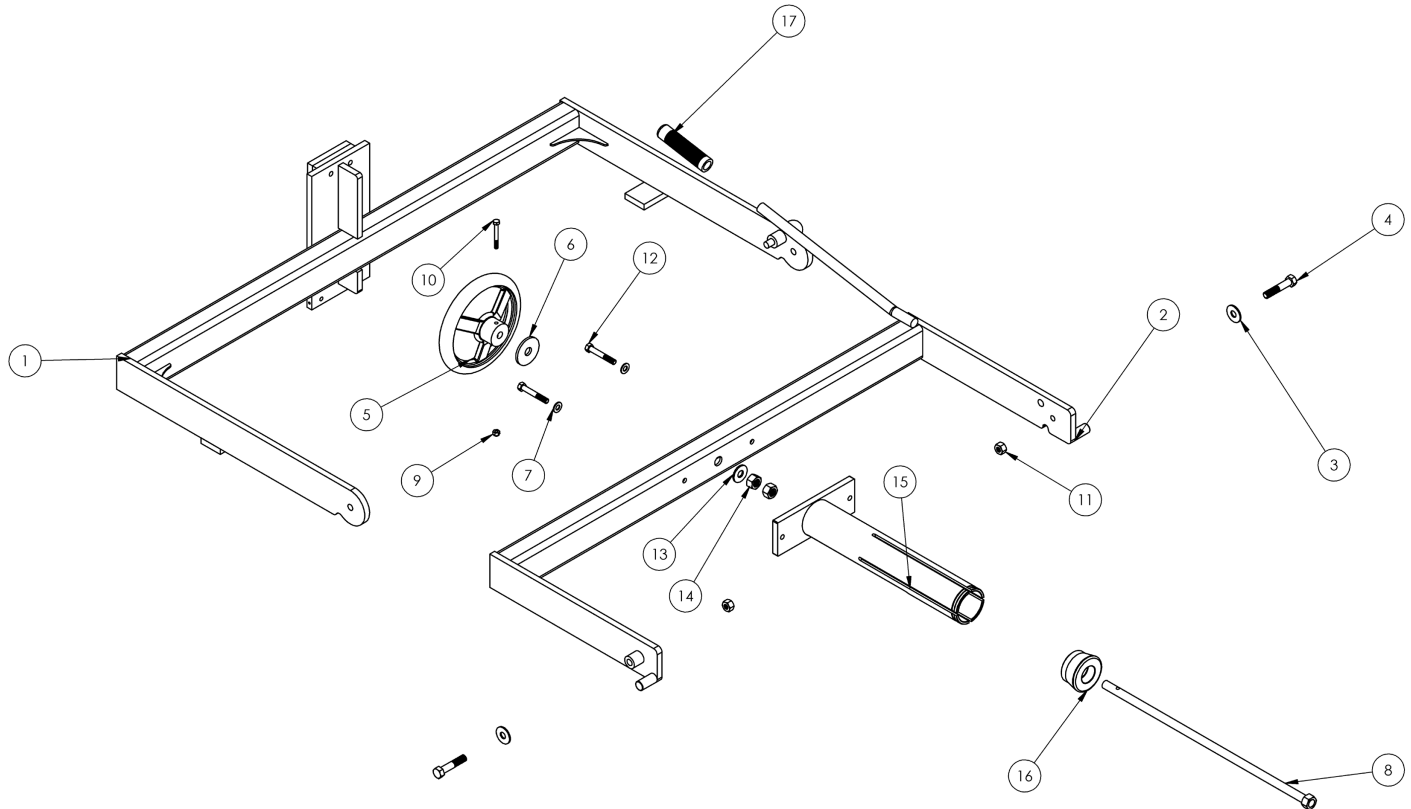
ITEM NO.	PART NUMBER	DESCRIPTION	Default/QTY.
1	12986	MH SIDE LAY, MAIN SUPPORT PLATE	1
2	12987	MH SIDE LAY, LOWER BEARING PLATE	1
3	12988	MH SIDE LAY, UPPER BEARING PLATE	1
4	12989	MH SIDE LAY, SUPPORT PLATE, MOVEABLE	1
5	3_8 BALL	MCMaster-CARR# 9528K19	18
6	12990	MH SIDE LAY, HANDLE WELDMENT	1
7	12993	MH SIDE LAY, CROSS LINKAGE	1
8	12994	MH SIDE LAY, GUIDE RAIL	2
9	12995	MH SIDE LAY, ATTACHMENT PLATE	1
10	12996	MH SIDE LAY, SPACER PLATE	1
11	12998	MH SIDE LAY, BACK SPACER PLATE	1
12	12999	MH SIDE LAY, TOUNGE	1
13	13000	MH SIDE LAY, HANDLE SPACER	2
14	18996	1-7/8 THERMOPLASTIC KNOB	1
15	MCM91235A120	NONSERRATED BELLEVILLE WASHER 3/8	1
16	SCH_~500-13 UNC_2~5_SIMP		2
17	HEX NUT_~375-16 UNC_0_LOCK	NYLOCK NUT 3/8-16	2
18	SCH_~375-16 UNC_2~5_SIMP	SOCKET HEAD CAP SCREW 3/8-16 X 2-1/2"	1
19	SCH_~375-16 UNC_1~5_SIMP	SOCKET HEAD CAP SCREW 3/8-16 X 1-1/2"	1
20	SCH_~375-16 UNC_1~25_SIMP	SOCKET HEAD CAP SCREW 3/8-16 X 1-1/4"	4
21	SHLDR-HEX 3%8_0~250_SIMP		1
22	FLH-SCH-82_~500-13 UNC_2~5_SIMP		4
23	SSCR-HEX-CUP_~375-16 UNC_1~25_SIMP	SOCKET SET SCREW 3/8-16 X 1-1/4"	2

# AZTECH CONVERTING SYSTEMS

## EZ-TILT 600 USER MANUAL



### Tilt Attachment, Standard



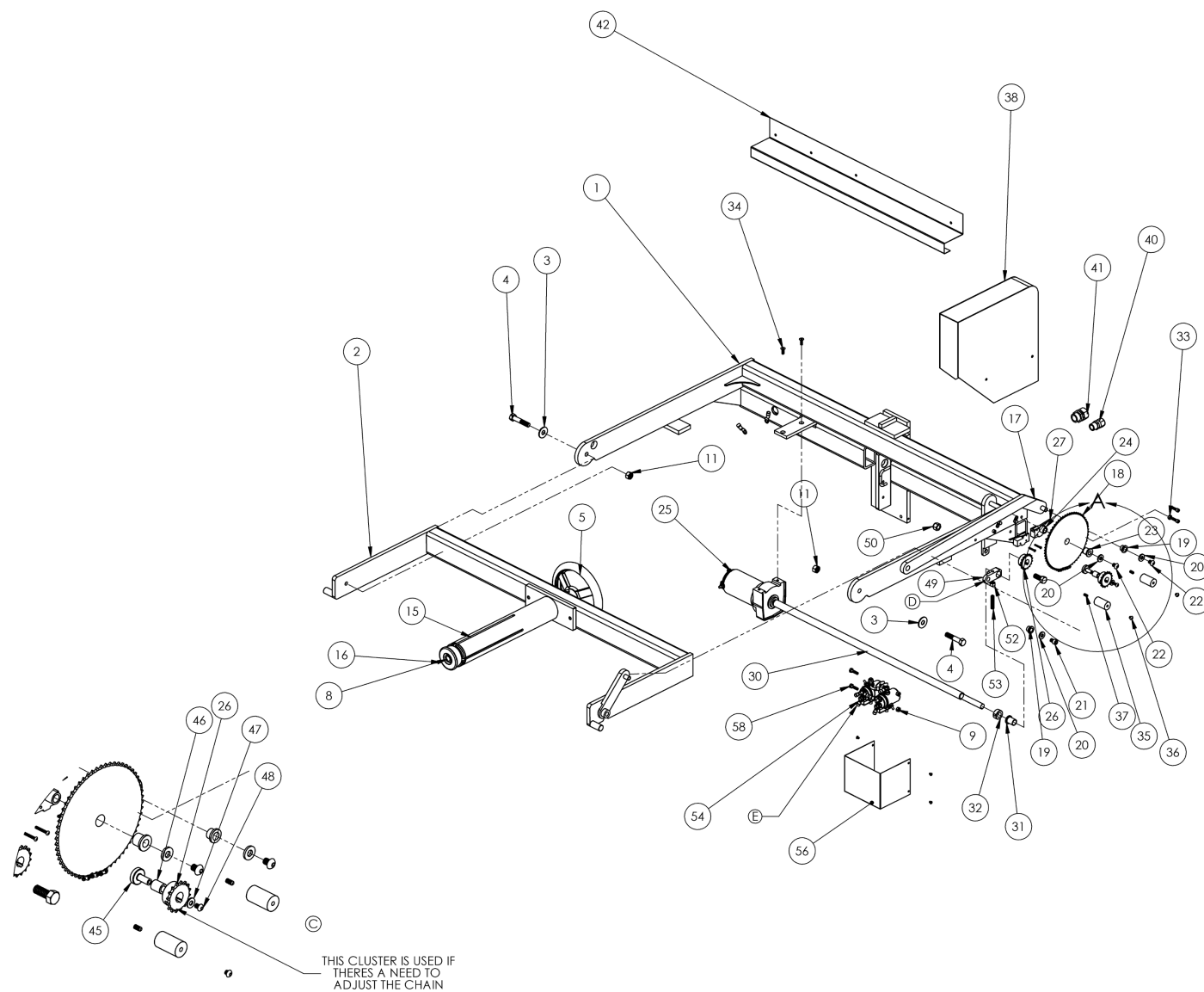
ITEM NO.	PART NUMBER	DESCRIPTION	HORZ ROLL/QTY.
1	13860	EASY TILT 40" MAIN FRAME WELDMENT	1
2	13861	EASY TILT 40" TILT FRAME WELDMENT	1
3	WSHR A_.500N	WASHER 1/2 N	2
4	HEX BOLT _~500-13 UNC 2~5 SIMP	HEX BOLT GRADE 5 1/2-13 X 2-1/2"	2
5	13760	EASY TILT LOCK WHEEL	1
6	FLW-WIDE_~625	FENDER WASHER 5/8 HOLE	1
7	WSHR A_.375N	WASHER 3/8 N	2
8	14444	EASY TILT THREADED ROD WELDMENT	1
9	HEX NUT_.250-20 UNC 0 LOCK	HEX NUT NYLOCK 1/4-20	1
10	HEX BOLT _~250-20 UNC 2~25 SIMP	HEX BOLT 1/4-20 X 2-1/4"	1
11	HEX NUT_.500-13 UNC 0 SIMP	HEX NUT 1/2-13	2
12	HEX BOLT _~375-16 UNC 2~5 SIMP	HEX BOLT GRADE 5 3/8-16 X 2-1/2"	2
13	WSHR A_.500W	WASHER 1/2 W	1
14	HEX NUT_~625-11 UNC SIMP	HEX NUT 5/8-11	2
15	13756	EASY TILT 3" CORE WELDMENT, 13"	1
16	13759	EASY TILT 3" CORE EXPANDER PLUG	1
17	18985	RUBBER GRIP, Fits 3/4" OD, 4-13/16" Length	1



# AZTECH CONVERTING SYSTEMS

## EZ-TILT 600 USER MANUAL

### Tilt Attachment (Eletric Option)



# AZTECH CONVERTING SYSTEMS

## EZ-TILT 600 USER MANUAL



ITEM NO.	PART NUMBER	DESCRIPTION	HORIZONTAL/QTY.
1	14946	EASY TILT 40" ELECTRIC MAIN FRAME LEFT CHAIN WELDMENT	1
2	14947	EASY TILT 40" ELECTRIC TILT FRAME LEFT CHAIN WELDMENT	1
3	WSHR A_.500N	WASHER 1/2 N	2
4	HEX BOLT ~500-13 UNC_2~5_SIMP	HEX BOLT GRADE 5 1/2-13 X 2-1/2"	2
5	13760	EASY TILT LOCK WHEEL	1
6	FLW-WIDE_~625	FENDER WASHER 5/8 HOLE	1
7	WSHR A_.375N	WASHER 3/8 N	2
8	14444	EASY TILT THREADED ROD WELDMENT	1
9	HEX NUT_~250-20 UNC_0_LOCK	HEX NUT NYLOCK 1/4-20	3
10	HEX BOLT ~250-20 UNC_2~25_SIMP	HEX BOLT 1/4-20 X 2-1/4"	1
11	HEX NUT_~500-13 UNC_0_SIMP	HEX NUT 1/2-13	2
12	HEX BOLT ~375-16 UNC_2~5_SIMP	HEX BOLT GRADE 5 3/8-16 X 2-1/2"	2
13	WSHR A_.500W	WASHER 1/2 W	1
14	HEX NUT_~625-11 UNC_SIMP	HEX NUT 5/8-11	2
15	13756	EASY TILT 3" CORE WELDMENT, 13"	1
16	13759	EASY TILT 3" CORE EXPANDER PLUG	1
17	14948	EASY TILT ELECTRIC TILT LINK LEFT CHAIN WELDMENT	1
18	14923	EASY TILT ELECTRIC TILT LEVER AND SPROCKET WELDMENT	1
19	1_2 ID X 5_8 OD X 1_2 LG X 7_8 X 1_8 FLANGED OILITE	1/2 ID X 5/8 OD X 1/2 LG X 7/8 X 1/8 FLANGED OILITE	2
20	WSHR A_.375 HARD	3/8" HARD WASHER	3
21	SCH_~375-16 UNC_0~5_SIMP	SOCKET HEAD CAP SCREW 3/8-16 X 1/2"	1
22	BTNHD_~375-16 UNC_0~5_SIMP	BUTTON HEAD CAP SCREW 3/8-16 X 1/2"	2
23	1_2 ID X 3_4 OD X 3_4 LG X 1 X 1_8 FLANGED OILITE	1/2 ID X 3/4 OD X 3/4 LG X 1" X 1/8 FLANGED OILITE	1
24	1_2 ID X 3_4 OD X 5_8 INCH LONG_SAE 841	1/2 ID X 3/4 OD X 5/8" LONG SAE 841	1
25	142003	MAIN MOTOR UNIT	1
26	35B16-5_8 KEYED	35B16-5/8 KEYED	2
27	Z-15GW-B7-K ASSEMBLY	General Purpose Snap Action Switch	2
28	SCH_~250-20 UNC_0~75_SIMP	SOCKET HEAD CAP SCREW 1/4-20 X 3/4"	2
29	BTNHD_~138-32 UNC_1_SIMP	BUTTON HEAD CAP SCREW 6-32 X 1"	4
30	14929	EASY TILT ELECTRIC TILT WINCH SHAFT WELDMENT	1
31	5_8 ID X 3_4 OD X 1 IN LG X 1 IN X 1_8 SAE 841	3/4 OD X 5/8 ID X 1" LONG X 1/8 X 1 FLANGE SAE 841	1
32	58 COLLAR	5/8 SET COLLAR	1
33	HEX NUT_~250-20 UNC_0_SIMP	1/4-20 NUT	1
34	FLH-SCH-82 ~250-20 UNC_0~75_SIMP	FLAT HEAD CAP SCREW 1/4-20 X 3/4"	2
35	14936	EASY TILT ELECTRIC TILT GUARD STANDOFF	2
36	BTNHD_~250-20 UNC_0~25_SIMP	BUTTON HEAD CAP SCREW 1/4-20 X 1/4"	2
37	SSCR-HEX-CUP_~250-20 UNC_0.5_SIMP	SOCKET SET SCREW SUP POINT 1/4-20 X 1/2"	2
38	14949	EASY TILT ELECTRIC GUARD LEFT CHAIN WELDMENT	1
39	SCH_~250-20 UNC_1_SIMP	SOCKET HEAD CAP SCREW 1/4-20 X 1"	2
40	1_2 STRAIN RELIEF ASSEMBLY	1/2" NON METALLIC LIQUID-TIGHT TYPW B CONNECTOR	1
41	3_4 STRAIN RELIEF ASSEMBLY	3/4" NON METALLIC LIQUID-TIGHT TYPW B CONNECTOR	1
42	14982	EASY TILT ELECTRIC MAIN FRAME WINCH SHAFT GUARD LEFT SIDE	1
43	1_4 CORD CLAMP	1/4 INCH CORD CLAMP	2
44	BTNHD_~164-32 UNC_0~375_SIMP	BUTTON HEAD CAP SCREW 8-32 X 3/8	2
45	15091	EASY TILT ELECTRIC, JACK SHAFT	1
46	3_8 ID X 5_8 OD X 3_4 INCH LONG_SAE 841	3/8 ID X 5/8 OD X 3/4" LONG SAE 841	1
47	WSHR A_.250N	WASHER N TYPE 1/4"	1
48	BTNHD_~250-20 UNC_0~375_SIMP	BUTTON HEAD CAP SCREW 1/4-20 X 3/8"	1
49	14932	EASY TILT ELECTRIC TILT WINCH DRIVE SPROCKET MOUNT PLATE	1
50	HEX NUT_~500-13 UNC_0_LOCK	NYLOCK NUT 1/2-13	1
51	HEX BOLT ~500-13 UNC_1~25_SIMP	HEX BOLT GRADE 5, 1/2-13 X 1-1/4"	1
52	HEX NUT_~375-16 UNC_0_SIMP	HEX NUT 3/8-16	1
53	SSCR-HEX-CUP_~375-16 UNC_1~75_SIMP	SOCKET SET SCREW CUP POINT 3/8-16 X 1-3/4"	1
54	15182	NAME	1
55	12-8 EYE CONNECTOR	NAME	2
56	15181	EASY TILT ELECTRIC ROLL LIFT, SOLENOID COVER	1
57	EXP2219	EASY TILT ELECTRIC POSITIVE WIRE TO SOLENOID	1
58	HEX BOLT ~250-20 UNC_1_SIMP	NAME	2
59	BTNHD_~164-32 UNC_0~25_SIMP	BUTTON HEAD CAP SCREW 8-32 X 1/4"	4



# AZTECH CONVERTING SYSTEMS

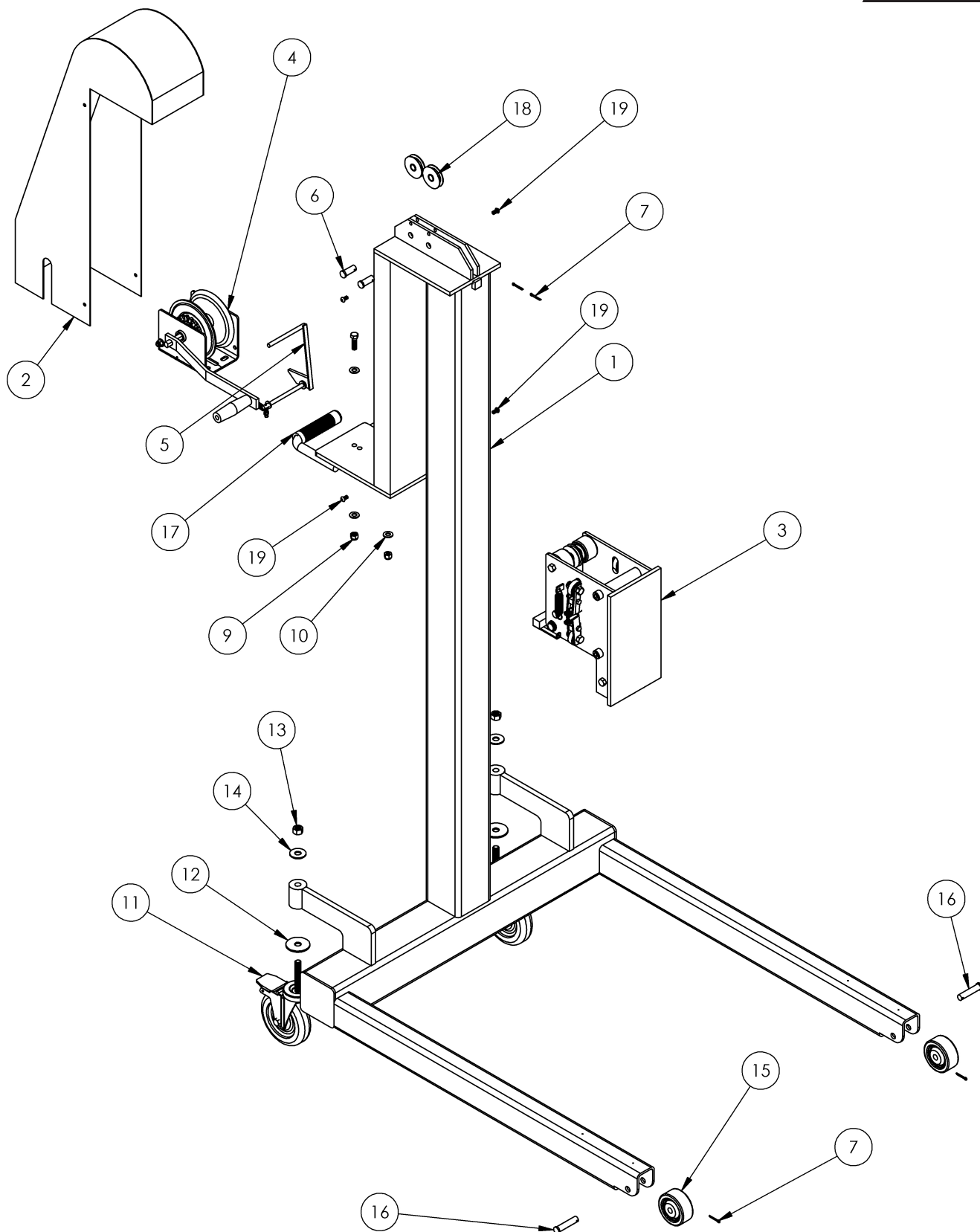
## EZ-TILT 600 USER MANUAL

### Cart (Standard)

ITEM NO.	PART NUMBER	DESCRIPTION	Default/QTY.
1	19063	MH800A, 36" LONG LEGS FRAME WELDMENT	1
2	12899	MH80A WINCH HOUSING WELDMENT	1
3	12866	MH80A TROLLEY ASSEMBLY	1
4	13068	K650-1491 WINCH MODIFIED	1
5	13076	MH40C, MH80A, MH80C, CABLE STOP, WELDMENT	1
6	18976	Steel Clevis Pin 1/2" Dia, 1-1/4" Length, 1" Usable Length	2
7	18975	Zinc-Plated Steel Cotter Pin 1/8" Diameter, 1" Length	4
8	HEX BOLT_~375-16 UNC_1~25_SIMP	HEX BOLT GRADE 5, 3/8-16 X 1-1/4	2
9	HEX NUT_~375-16 UNC_0_LOCK	NYLOCK NUT 3/8-16	2
10	WSHR A_~375N	WASHER 3/8 N	4
11	5in_Caster_Assm	(CAS 022-749) 5" STEM CASTER WITH BRAKE	2
12	13989	MH40 SWIVEL CASTER SUPPORT WASHER	2
13	HEX NUT_~500-13 UNC_0_SIMP	HEX NUT 1/2-13	2
14	WSHR A_~500N	WASHER 1/2 N	2
15	19040	3" PHENOLIC WHEEL	2
16	18974	Steel Clevis Pin 1/2" Diameter, 2-1/4" Length, 2" Usable Length	2
17	18985	RUBBER GRIP, Fits 3/4" OD, 4-13/16" Length	2
18	00208	2" O.D. x 1/2" ID PULLEY	2
19	BTNHD_~250-20 UNC_0~5_SIMP	BUTTON HEAD CAP SCREW 1/4-20 X 1/2"	4

# AZTECH CONVERTING SYSTEMS

## EZ-TILT 600 USER MANUAL





# AZTECH CONVERTING SYSTEMS

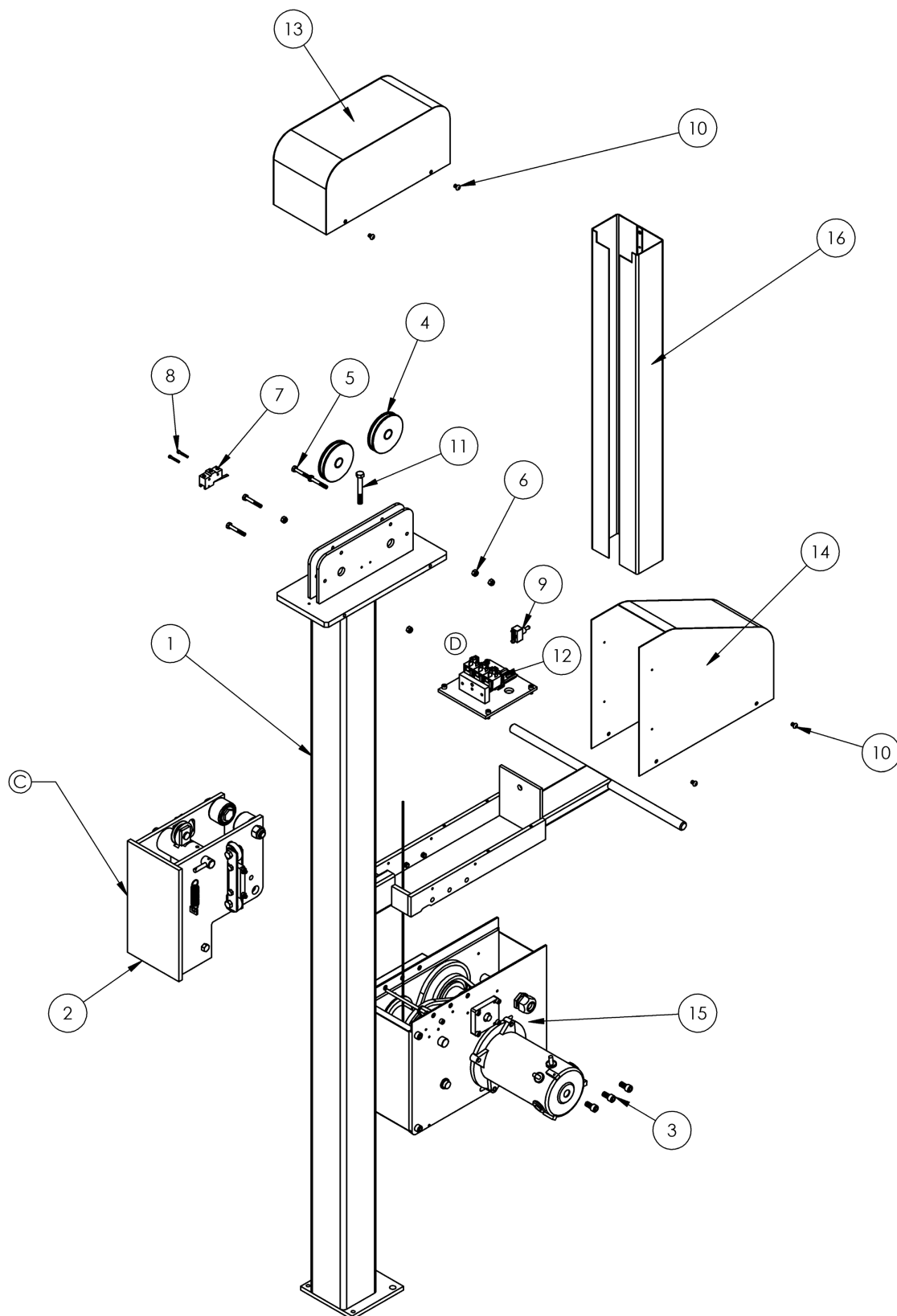
## EZ-TILT 600 USER MANUAL

### Cart (Electric)

ITEM NO.	PART NUMBER	DESCRIPTION	Default/QTY.
1	14960	MH80A DETACHABLE FRAME, WELDMENT	1
2	18952	MH800 SINGLE CABLE TROLLEY ASSEMBLY	1
3	SCH_~375-16 UNC_0~75_SIMP	SOCKET HEAD CAP SCREW 3/8-16 X 3/4"	6
4	00358	PULLEY, 1550 #, 3.5 OD	2
5	HEX BOLT_~250-20 UNC_1~75_SIMP	NAME	4
6	HEX NUT_~250-20 UNC_0_LOCK	HEX NUT NYLOCK 1/4-20	4
7	Z-15GW-B7-K ASSEMBLY	General Purpose Snap Action Switch	1
8	SCH_~138-32 UNC_1_SIMP	SCH 6-32 X 1"	2
9	15189	Switch Function Momentary On/Off/Momentary On, SPDT	1
10	BTNHD_~250-20 UNC_0~375_SIMP	BUTTON HEAD CAP SCREW 1/4-20 X 3/8"	8
11	HEX BOLT_~375-16 UNC_2~75_SIMP		1
12	16748	MH800 ELECTRIC RELAY MOUNT ASSEMBLY	1
13	16665	MH800 ELECTRIC UPPER COVER WELDMENT	1
14	16668	MH800 ELECTRIC LOWER COVER WELDMENT	1
15	16798	MH40 ELECTRIC WINCH ASSEMBLY	1
16	16754	MH800 ELECTRIC SLIDE COVER, MH800A	1

# AZTECH CONVERTING SYSTEMS

## EZ-TILT 600 USER MANUAL





# AZTECH CONVERTING SYSTEMS

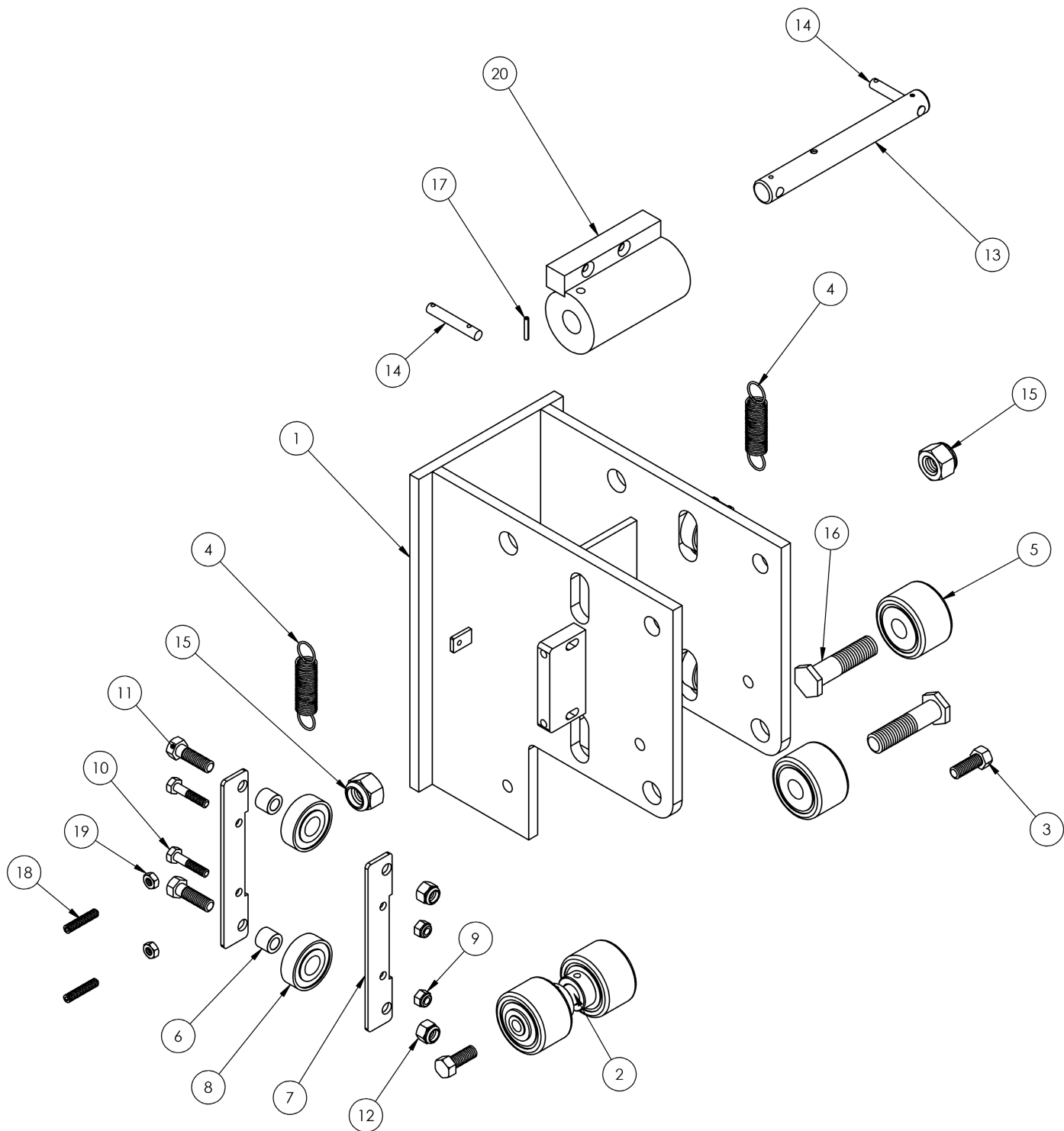
## EZ-TILT 600 USER MANUAL

### Trolley Assembly

ITEM NO.	PART NUMBER	DESCRIPTION	QTY.
1	14224	MH80A TROLLEY PLATE WELDMENT	1
2	12893	MH80 TROLLEY LOWER CAM FOLLOWER ASSEMBLY	1
3	HEX HD_.375-16 UNC_1_SIMP		2
4	19007	EXTENSION SPRING	2
5	18965	2" DIA X 5/8ID CAM FOLLOWER	2
6	18966	3/8" ID X 5/8" OD X 1/2" LONG OILLITE	4
7	14360	MH80 TROLLEY PLATE FRONT CABLE, SIDE THRUST PLATE	4
8	14477	1628 BEARING 1-5/8 OD X 5/8 ID DOUBLE SHIELDED	4
9	HEX NUT_.250-20 UNC_0_LOCK	HEX NUT NYLOCK 1/4-20	4
10	18968	Grade 2 Zinc-Plated Steel Coupling Nut 1/2"-20 Thread Size, 1-3/4" Length, 11/16" Width	4
11	HEX BOLT_~375-16 UNC_1~25_SIMP	HEX BOLT GRADE 5, 3/8-16 X 1-1/4	4
12	HEX NUT_.375-16 UNC_0_LOCK	NYLOCK NUT 3/8-16	4
13	14233	MH80 TROLLEYFRONT CABLE, BRAKE SUPPORT PIVOT PIN	1
14	12158	MH40 TROLLEY BRAKE SPRING ARM SHAFT	2
15	HEX NUT_~625-11 LOCK		2
16	14362	MH80 TROLLEY,FRONT CABLE, CAM FOLLOWER BOLT	2
17	SLTD SPR PIN_~125_0~75		2
18	SSCR-HEX-CUP_~250-20 UNC_1~25_SIMP	SOCKET SET SCREW 1/4-20 X 1-1/4"	4
19	HEX MS NUT_0~250-20 UNC_SIMP		4
20	14984	MH80 TROLLEY BRAKE CAM WELDMENT TWO CABLE	1

# AZTECH CONVERTING SYSTEMS

## EZ-TILT 600 USER MANUAL

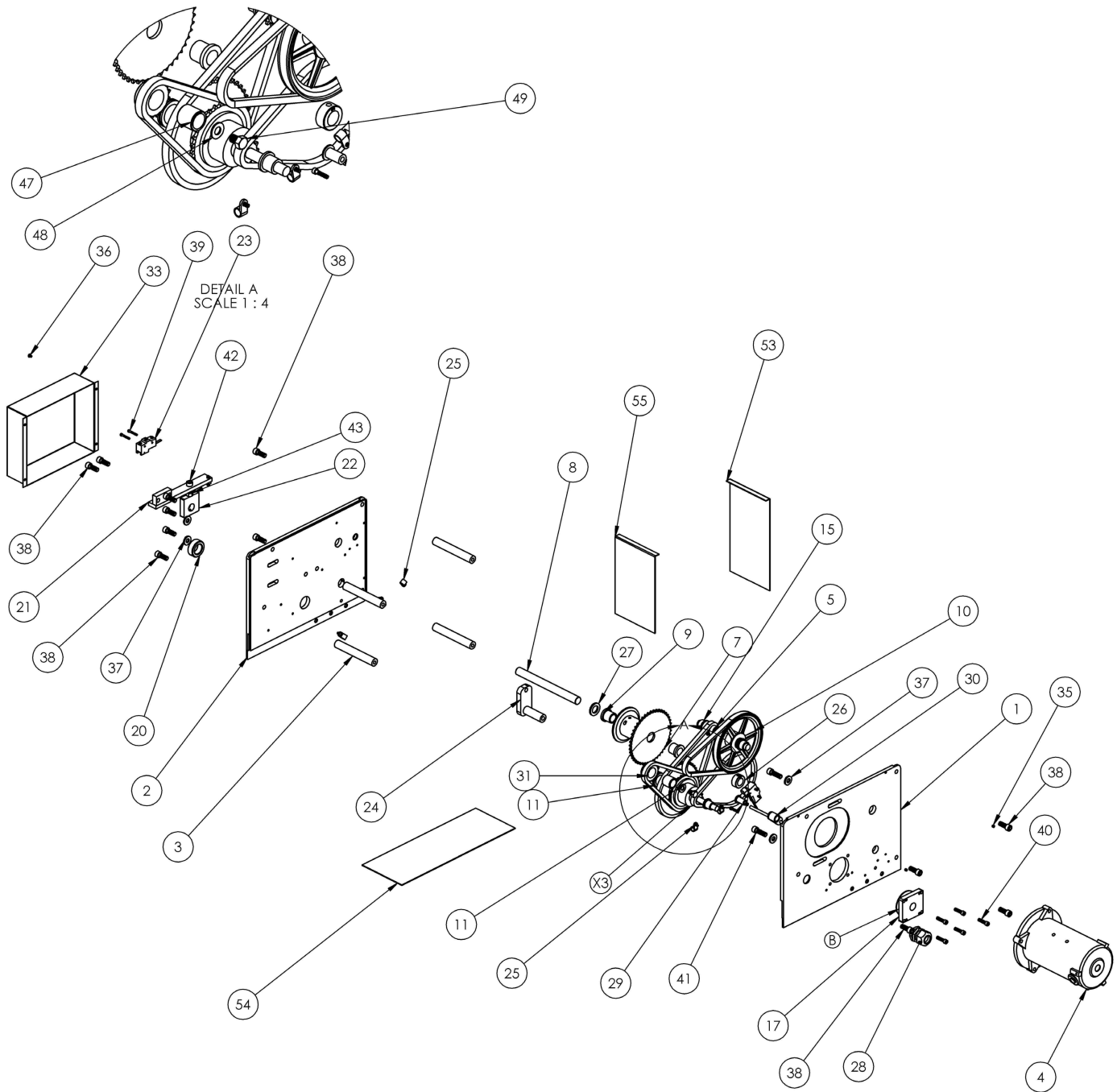




# AZTECH CONVERTING SYSTEMS

## EZ-TILT 600 USER MANUAL

### Transmission (Electric)



# AZTECH CONVERTING SYSTEMS

## EZ-TILT 600 USER MANUAL



ITEM NO.	PART NUMBER	DESCRIPTION	Default/QT Y.
1	16786	MH40 ELECTRIC WINCH FRAME PLATE FRONT	1
2	16787	MH40 ELECTRIC WINCH FRAME PLATE REAR	1
3	16773	MH40 ELECTRIC WINCH STANDOFF	4
4	DC09N 12V DC MOTOR 1.4 HP	12VDC, 1/4 HP MOTOR	1
5	16788	MH40 ELECTRIC WINCH 1ST JACK SHAFT WELDMENT	1
6	AK20	5/8 BORE 1.8" PD	1
7	16790	MH40 ELECTRIC WINCH CABLE HUB WELDMENT 35 CHAIN	1
8	16774	MH40 ELECTRIC WINCH CABLE HUB SPRT SHAFT	1
9	3.4 ID X 1.1 IN OD X 1.1 IN LG X 1.1 4 X 3.16 FLANGE	3/4 ID X 1" OD X 1" LG X 1-1/4 OD X 3/16 FLANGED	2
10	18977	Die Cast V-Belt Pulley 4L, A-, & Ax-Section Belt, 6" OD, 5/8" Bore	1
11	16792	MH40 ELECTRIC WINCH BRAKE ASSEMBLY SPROCKET DRIVE	1
12	V BELT EXP2853	NAME	1
13	THIRD 35 CHAIN	NAME	1
14	FIRST 35 CHAIN	NAME	1
15	18978	5/8" ID X 7/8 OD X 5/8" LG FLANGED	2
16	625 COLLAR	5/8" SET COLLAR	1
17	16831	MH40 TRANSMISSION, REAR PLATE, BRAKE PAD CAP	1
18	1.2 ID X 3.4 OD X 3.4 LG X 1 X 1.8 FLANGED OILITE	1/2 ID X 3/4 OD X 3/4 LG X 1" X 1/8 FLANGED OILITE	1
19	1 IN ID X 1-1.4 OD X 3.4 LG X 1-1.2 X 1.8 FLANGED	1" ID X 1-1/4 OD X 3/4 X 1-1/2 X 1/8 FLANGED OILITE	1
20	1 IN SET COLLAR	1" SET COLLAR	2
21	16794	MH40 TRANSMISSION, LOAD CELL WELDMENT	1
22	16778	MH40 TRANSMISSION, LOAD CELL SHAFT SPRT BLOCK	1
23	Z-15GW-B7-K ASSEMBLY	General Purpose Snap Action Switch	2
24	15183	M150 TRANSMISSION DRILL ROD 20 MM ONE WAY CLUTCH SHAFT WELDMENT	1
25	3.8 CORD CLAMP WITH BTNHD 8-32 X 3.8	3/8 CORD CLAMP WITH BTNHD 8-32 X 3/8	6
26	34inch SET Collar	3/4 INCH SET COLLAR	1
27	3.4 ID X 1-1.4 OD X .134 THICK SHIM	MSC 97063A139	1
28	3.4 STRAIN RELIEF ASSEMBLY	3/4" NON METALLIC LIQUID-TIGHT TYPW B CONNECTOR	1
29	16782	MH40 ELECTRIC WINCH PIVOT LINK SPRT SHAFT	1
30	16795	MH40 ELECTRIC WINCH PIVOT LINK WELDMENT	1
31	16797	MH40 ELECTRIC OWC SPOCKET	1
32	CLUTCH 35 CHAIN	NAME	1
33	16784	MH40 TRANSMISSION, CART HEAD SIDE COVER	1
34	18971	5/8 ID X 1" OD X .075 THICK Wide-Rim Shims	4
35	SSCR-HEX-CUP ~190-32 UNC 0~1875 SIMP	SOCKET SET SCREW CUP POINT 10-32 X 3/16"	2
36	BTNHD ~164-32 UNC 0~25 SIMP	BUTTON HEAD CAP SCREW 8-32 X 1/4"	4
37	WSHR A_.375 HARD	3/8" HARD WASHER	4
38	SCH_~375-16 UNC_1_SIMP	SOCKET HEAD CAP SCREW 3/8-16 X 1"	12
39	SCH_~138-32 UNC_1_SIMP	SCH 6-32 X 1"	4
40	SCH_~250-20 UNC_1_SIMP	SOCKET HEAD CAP SCREW 1/4-20 X 1"	5
41	SCH_~375-16 UNC_1~25 SIMP	SOCKET HEAD CAP SCREW 3/8-16 X 1-1/4"	2
42	SCH_~375-16 UNC_1~5 SIMP	SOCKET HEAD CAP SCREW 3/8-16 X 1-1/2"	1
43	HEX NUT .375-16 UNC_0 SIMP	HEX NUT 3/8-16	1
44	SSCR-HEX-CUP_~250-20 UNC_1 SIMP	SOCKET SET SCREW 1/4-20 X 1"	1
45	HEX NUT .250-20 UNC_0 SIMP	1/4-20 NUT	1
46	SSCR-HEX-CUP_~250-20 UNC_0~5 SIMP	SOCKET SET SCREW 1/4-20 X 1/2"	1
47	HFL-2026	INA Drawn cup roller clutches HFL-2026	1
48	WSHR A_.375N	WASHER 3/8 N	1
49	HEX BOLT ~375-16 UNC 0~5 SIMP	HEX BOLT 3/8-16 X 1/2" GRADE 5	1
50	HEX NUT .164-32 UNC_0 SIMP	8-32 NUT	1
51	SCH_~164-32 UNC_0~5 SIMP	SOCKET HEAD CAP SCREW 8-32 X 1/2"	1
52	SCH_~164-32 UNC_0~75 SIMP	8-32 X 3/4" SOCKET HEAD CAP SCREW	1
53	16775	MH40 ELECTRIC WINCH END GUARD	1
54	16776	MH40 ELECTRIC WINCH TOP GUARD	1
55	16783	MH40 ELECTRIC WINCH END GUARD SWITCH SIDE	1

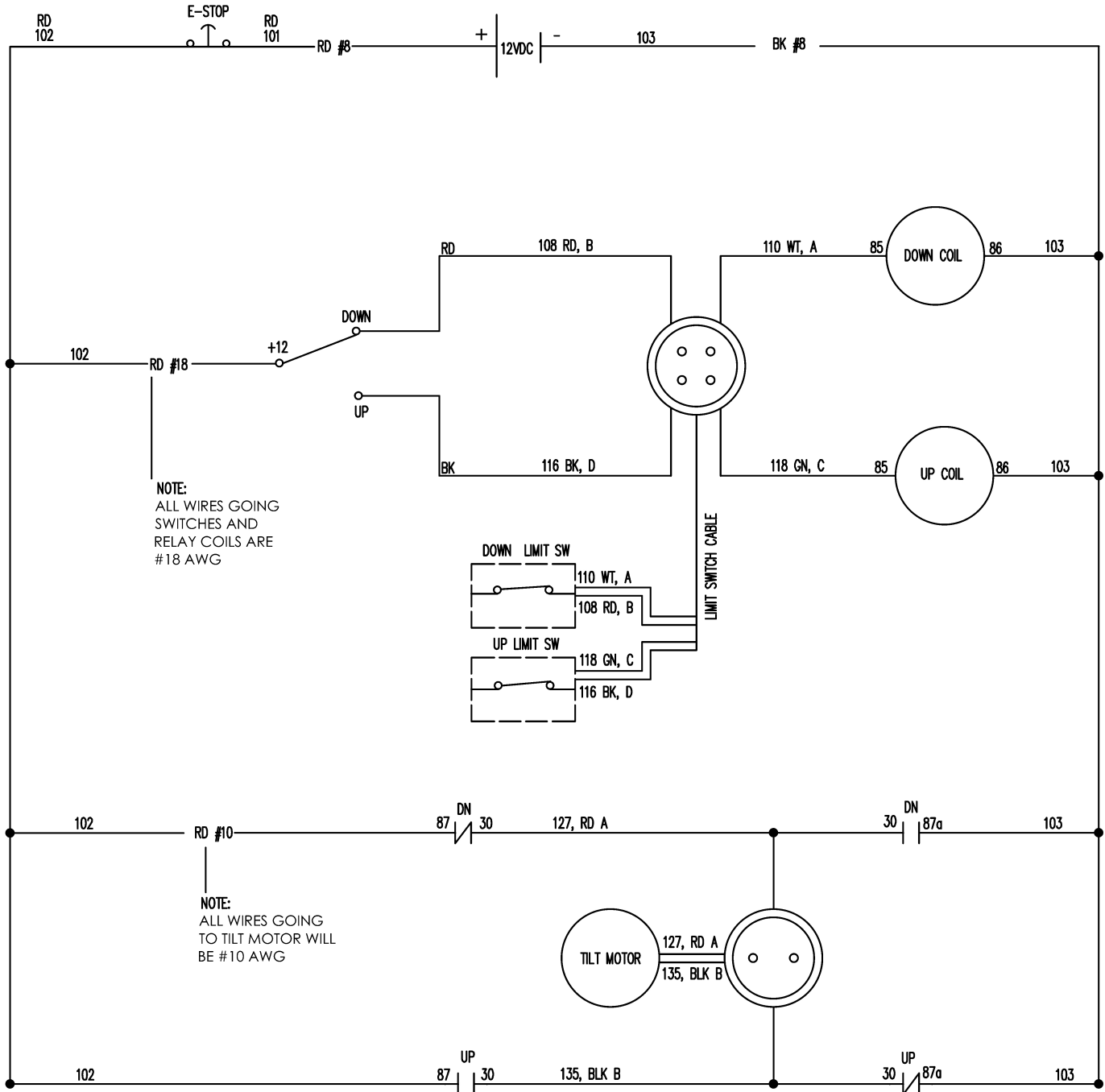


# AZTECH CONVERTING SYSTEMS

## EZ-TILT 600

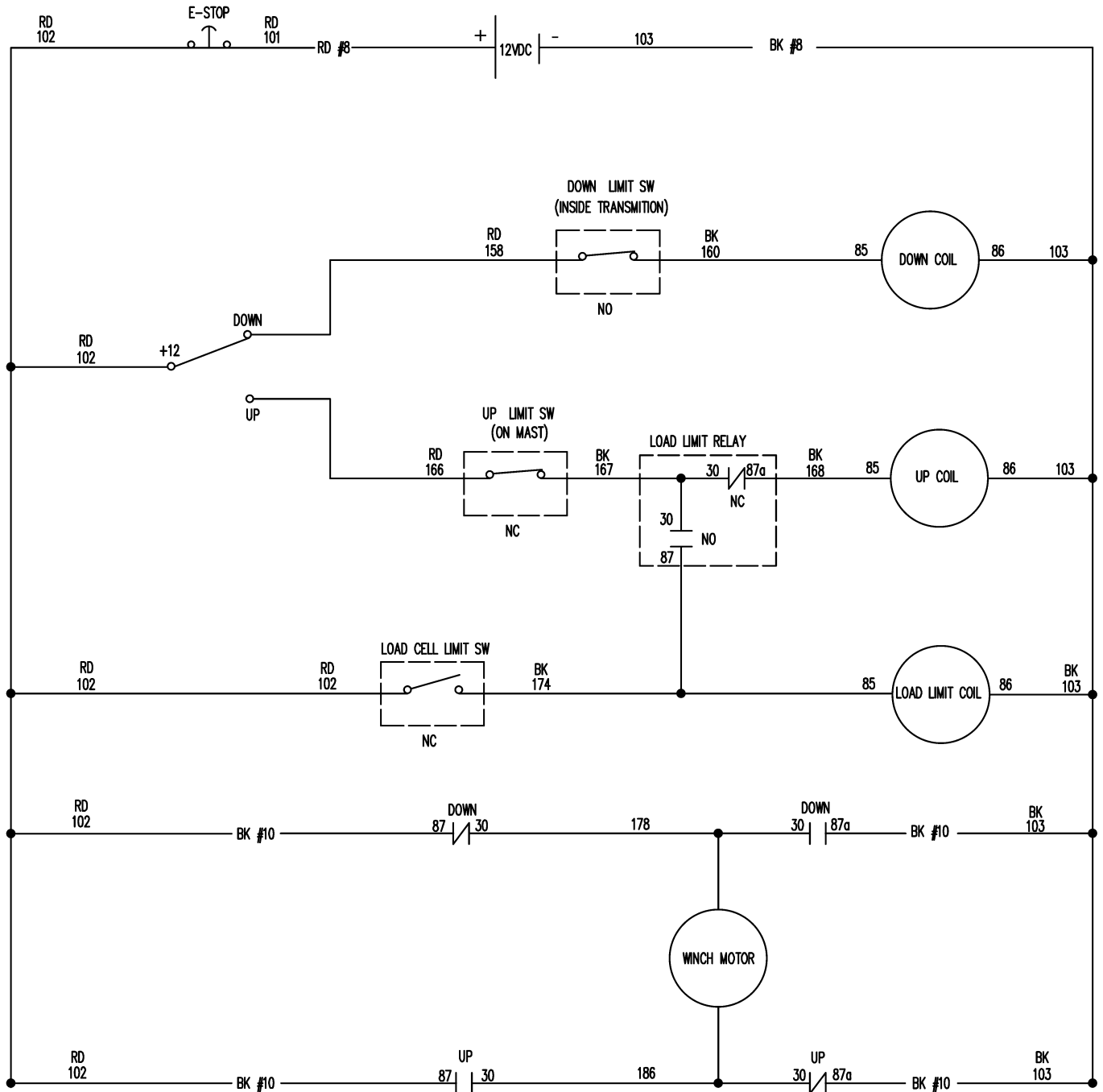
### USER MANUAL

#### Electrical Schematic (Motorized Tilt)





### Electrical Schematic (Mail Lift)





# AZTECH CONVERTING SYSTEMS

## EZ-TILT 600 USER MANUAL

---

### Section 5: Warranties and Service

#### 5-1: Warranties & Provisions

**WARRANTIES:** All equipment manufactured and sold by AZTECH Converting Systems (Seller) is warranted to be free of defective materials and workmanship under normal use and service for a period of one (1) year from the date of delivery to Buyer's premises. All commercial components not manufactured by Seller carry the original manufacturer's warranty. At Seller's discretion, Seller may provide on-site warranty service for a period of ninety (90) days from the aforementioned date.

**REMEDIES** If within the Warranty Period any such Equipment is proven to Seller's satisfaction to be defective in either material or workmanship, Seller, at its sole discretion, shall (a) repair or replace defective parts on the Equipment at Seller's cost, or (b) grant a reasonable allowance on account of such a breach. If within the Warranty Period the Seller receives notice from Buyer of defects in parts or materials. Seller will ship (ground, prepaid) replacement parts) and invoice Buyer for the full cost of the replacement parts). Buyer will receive a Return Authorization (RA) from seller, and return defective parts or materials to Seller, who at its sole discretion shall determine whether defective parts or materials are or are not subject to exclusion from this warranty as provided herein. Any defective parts or material not excluded from the Warranty Period will then be fully credited to Buyer.

#### **EXCLUSIONS**

##### **THE FOLLOWING ITEMS ARE EXCLUDED FROM THIS WARRANTY:**

- Defects or damage caused by careless or improper use.
- Parts that need periodic replacement from wear during normal operation.
- Routine maintenance and adjustment.
- Failure or damage caused by improper installation or inadequate maintenance by Buyer.
- Failure or damage caused by equipment modifications by Buyer.
- Equipment damage resulting from an accident, or abnormal conditions of operation.

#### **DISCLAIMER OR WARRANTY**

**NO OTHER WARRANTY IS EXPRESSED OR IMPLIED INCLUDING WARRANTIES OF MERCHANTABILITY AND FITNESS FOR ANY PARTICULAR PURPOSE. SELLER IS NOT LIABLE FOR INCIDENTAL OR CONSEQUENTIAL DAMAGE SUCH AS, BUT NOT LIMITED TO LOSS IN PROFITS, LOSS OF USE OF EQUIPMENT, OR INCREASED IN OPERATING COSTS OR EXPENSES.**

#### **5-2: Technical Service**

In the event that your machine is not functioning properly or if you have any technical questions, an AZTECH Technical Service representative is available to assist you. Contact information is as follows:

**Phone:** 1-480-951-8351  
1-800-829-8351  
**Fax:** 1-480-998-5409  
**E-Mail:** [techservice@aztechconverting.com](mailto:techservice@aztechconverting.com)